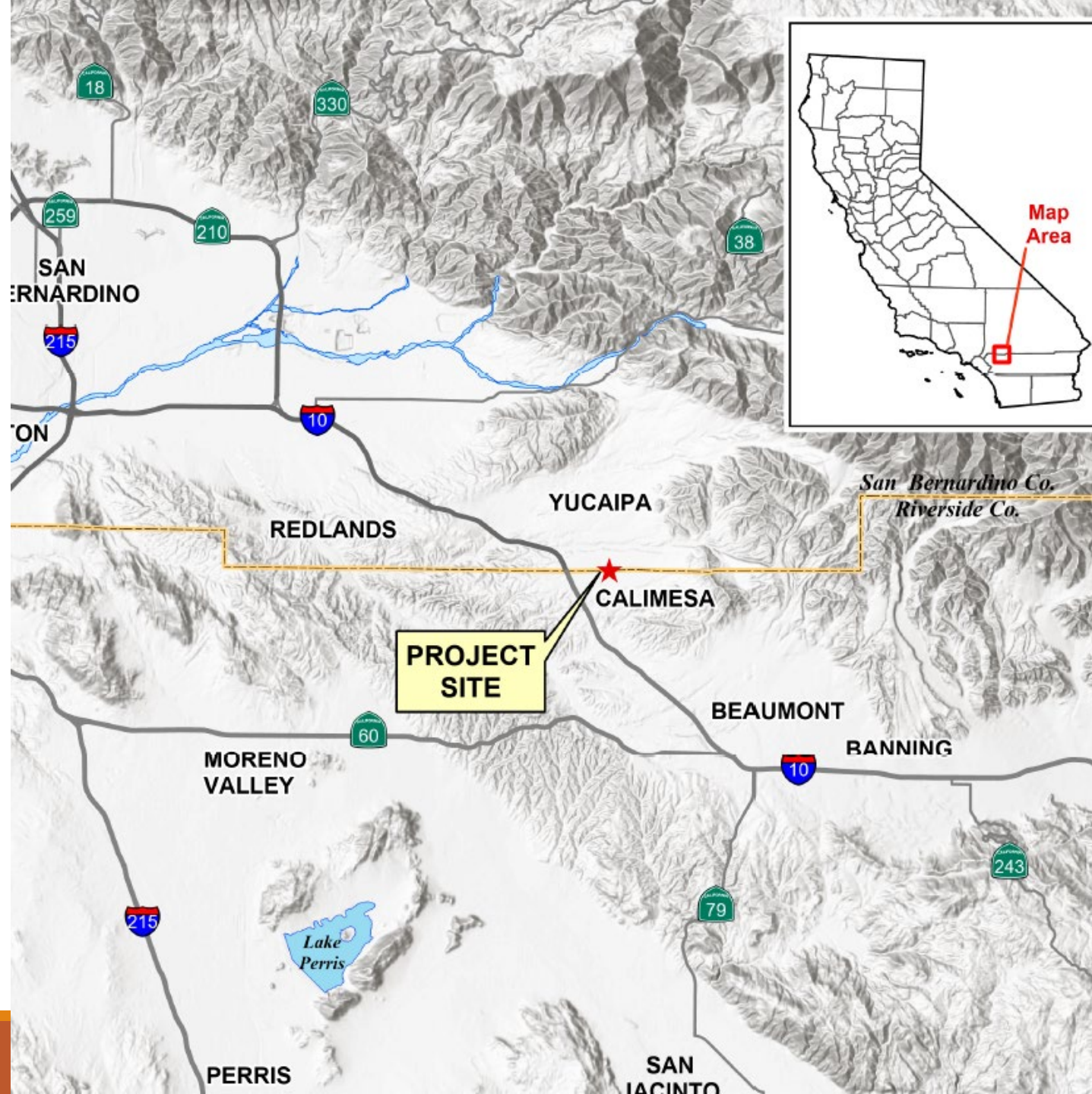
A construction site at sunset. In the background, an excavator is visible against the orange and yellow sky. In the foreground, a large white truck is parked on a dirt road. A worker in a yellow safety vest is standing near the truck. The scene is dimly lit, with the primary light source being the setting sun.

# County Line Rd Construction Update

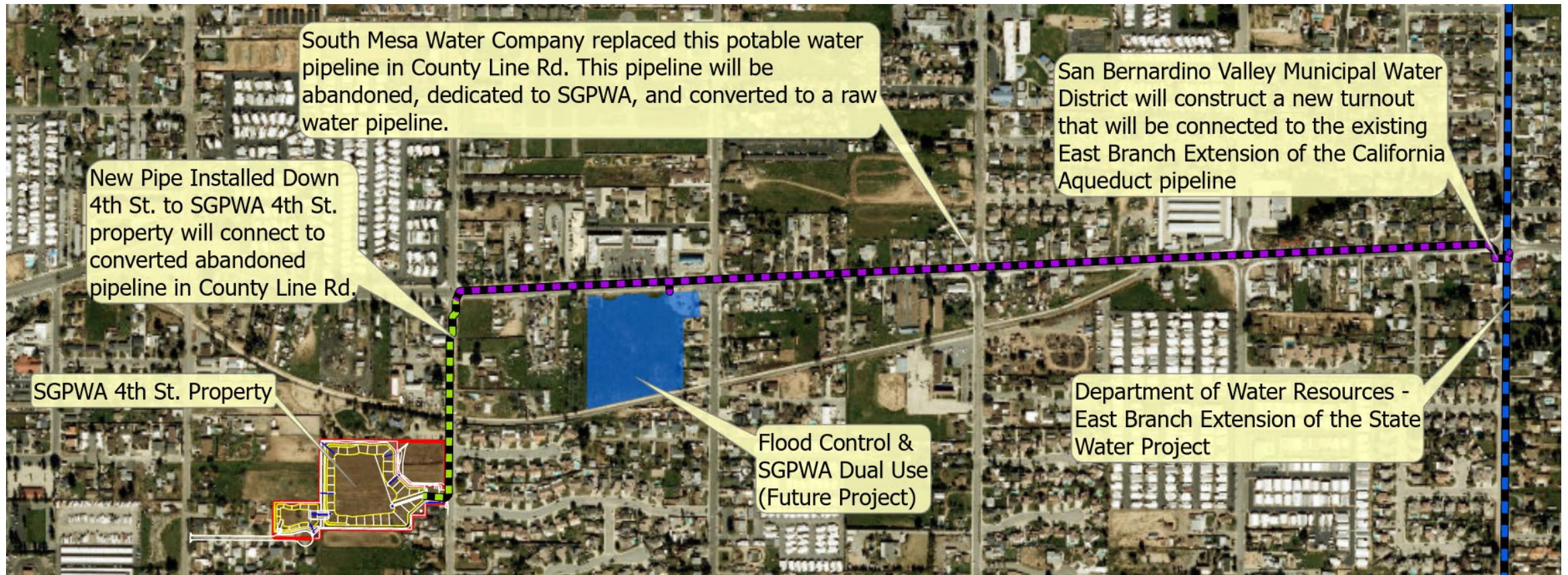
---

BOARD OF DIRECTORS

JANUARY 26, 2026







# County Line Rd Recharge Basin and Turnout Project

## Ongoing Activities

---

SMWC 8-inch pipe relocation – Ongoing

---

County Line Rd 14-inch pipeline inspection – Ongoing

---

County Line Rd 14-inch pipeline rehab - Ongoing

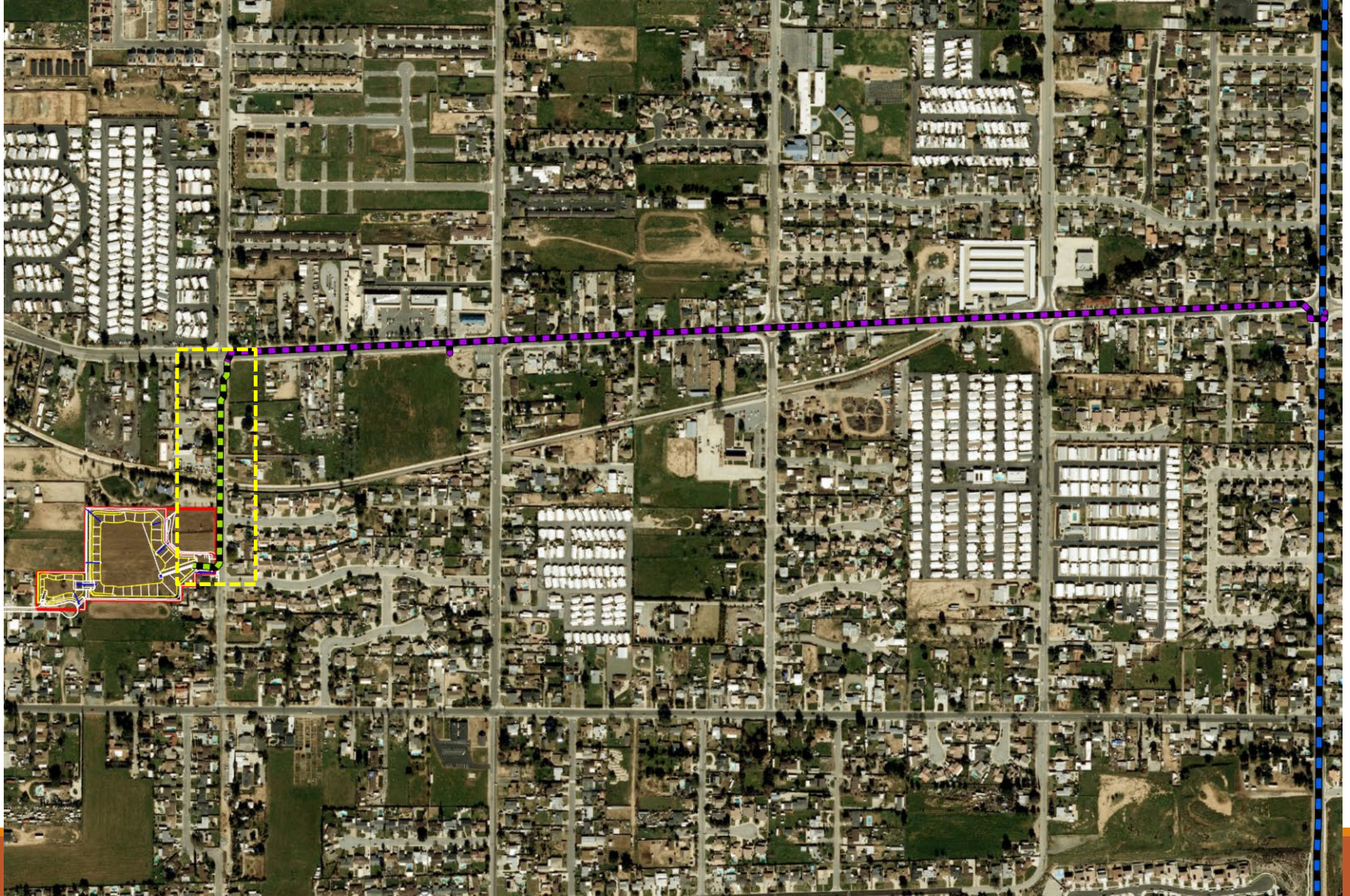
---

Basin excavation – Ongoing

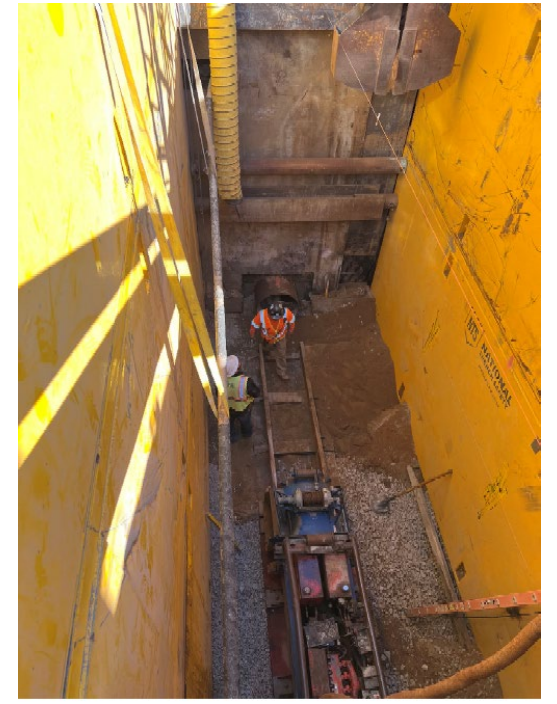
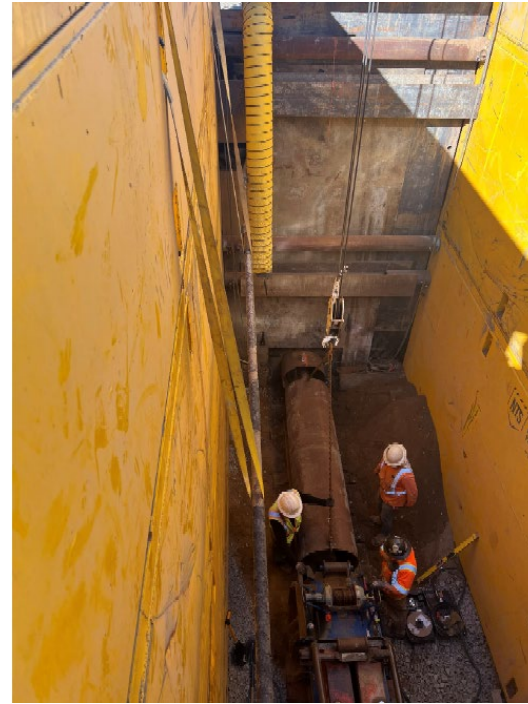
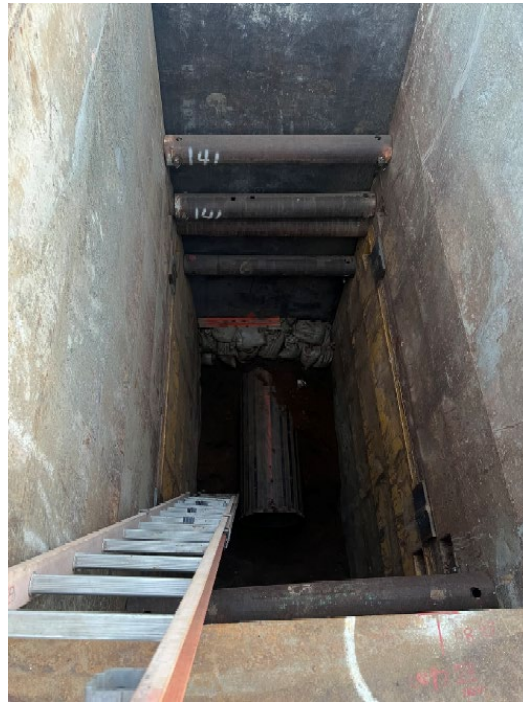
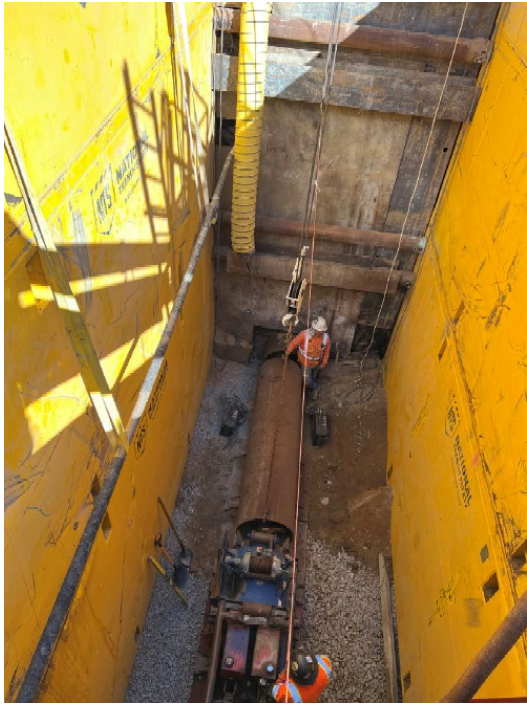
---

Archaeo/Paleo/Tribal monitoring - Ongoing





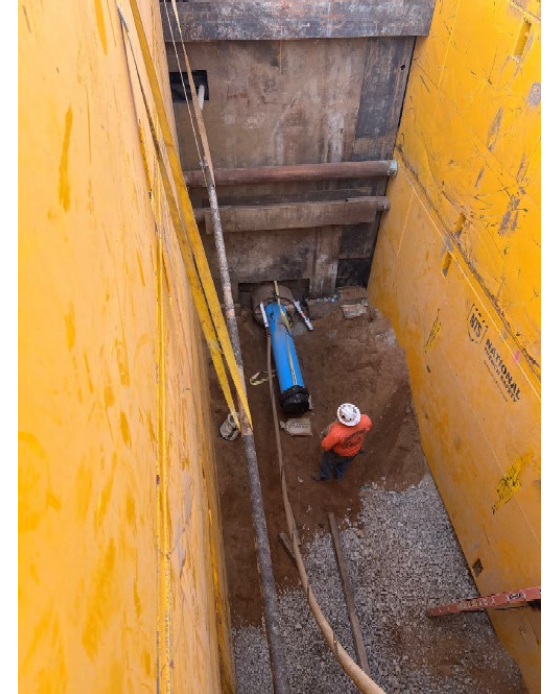
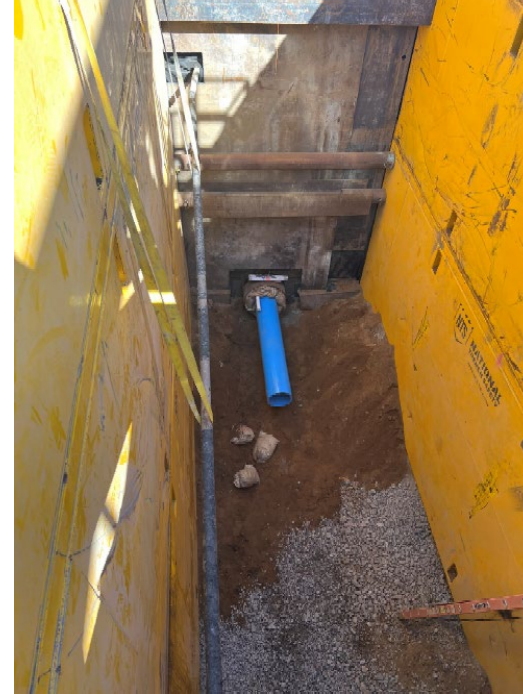




# Pipeline Installation

---





# Pipeline Installation

---

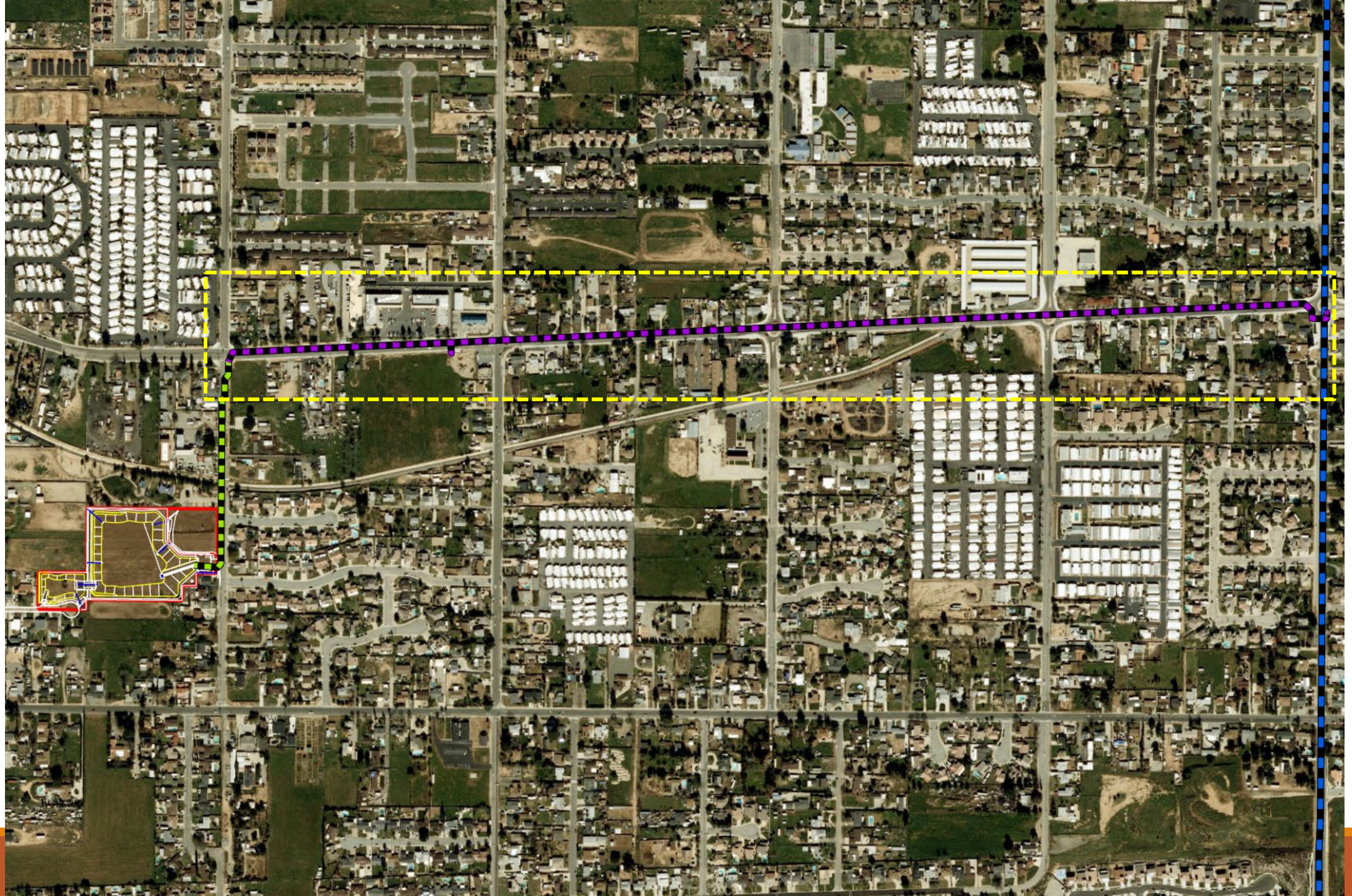




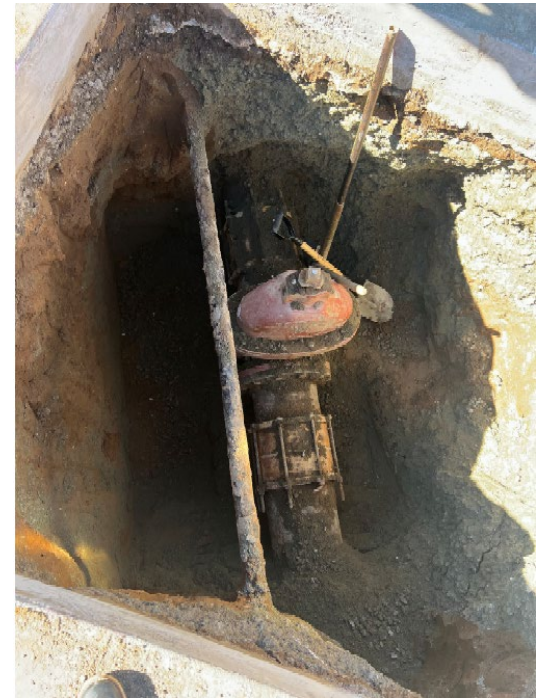
# Pipeline Installation

---





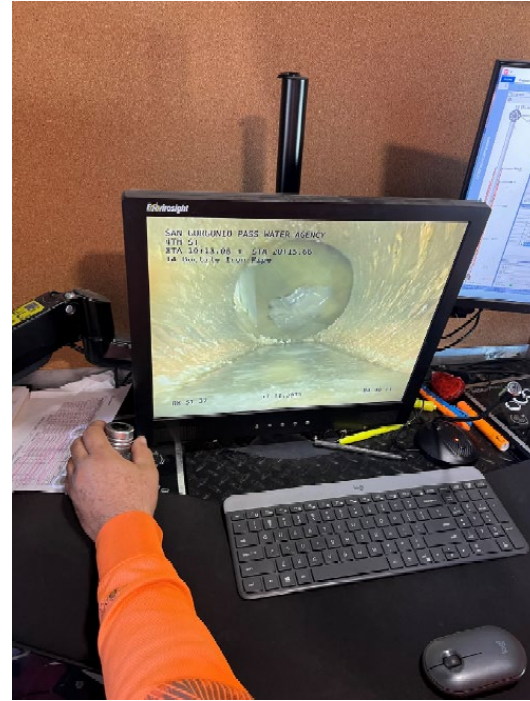
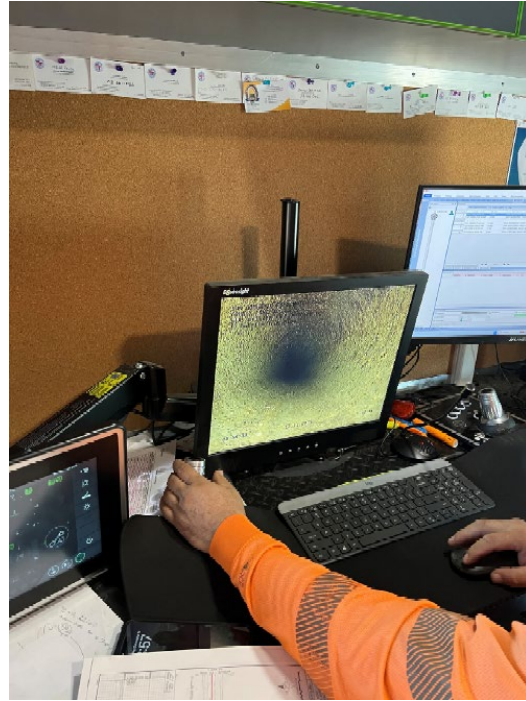




# Pipe Inspection

---

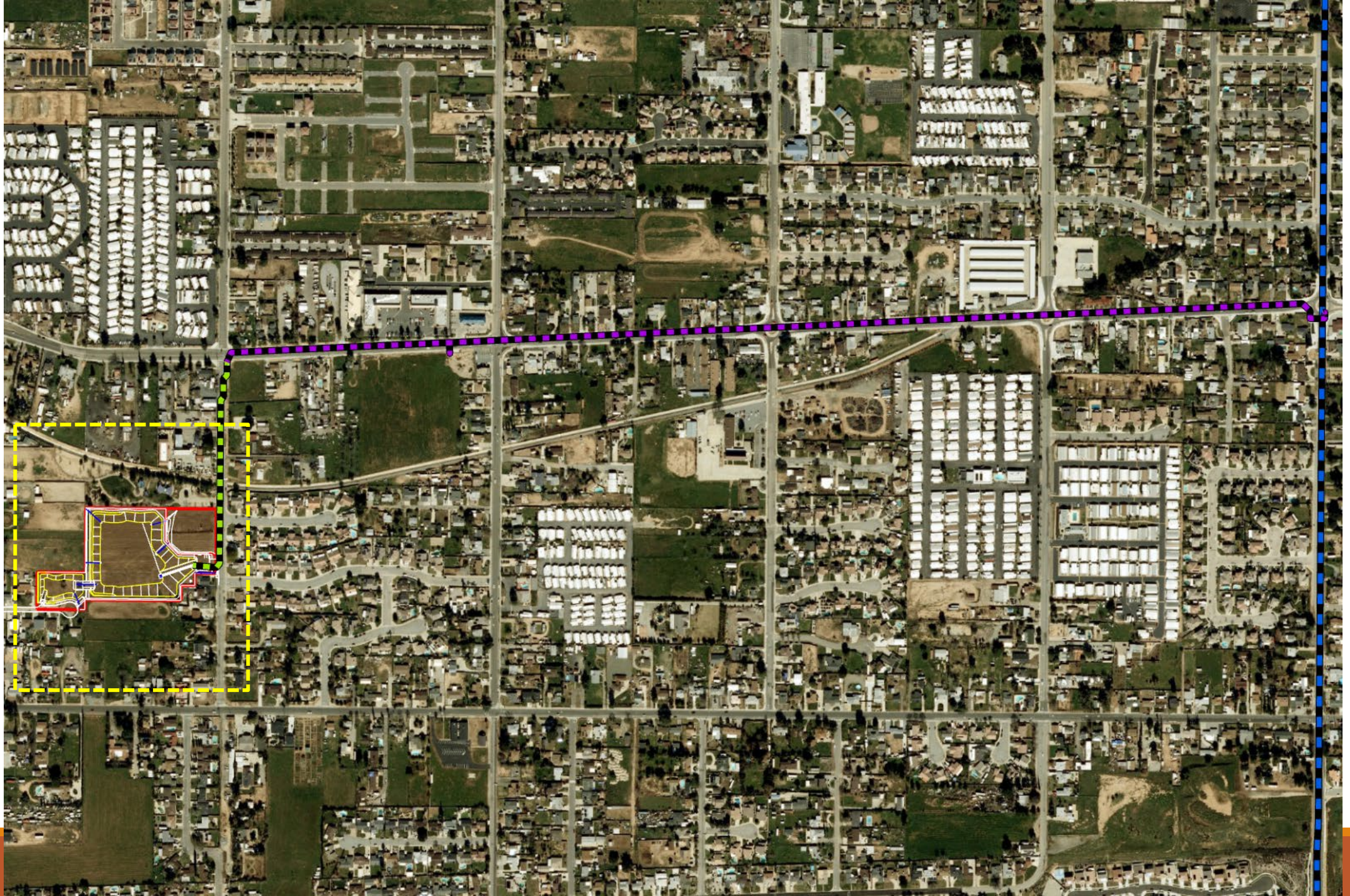




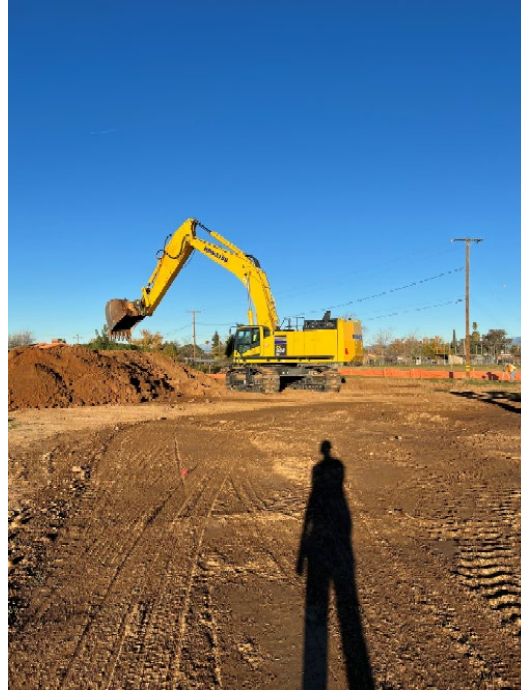
# Pipeline Inspection

---









# Basin Excavation

---



An aerial, high-angle view of a multi-lane highway with several vehicles traveling in both directions. The road is light gray with white lane markings. The background is a soft, hazy blue sky. The text "To be continued..." is centered over the lower half of the image.

To be continued...

---