



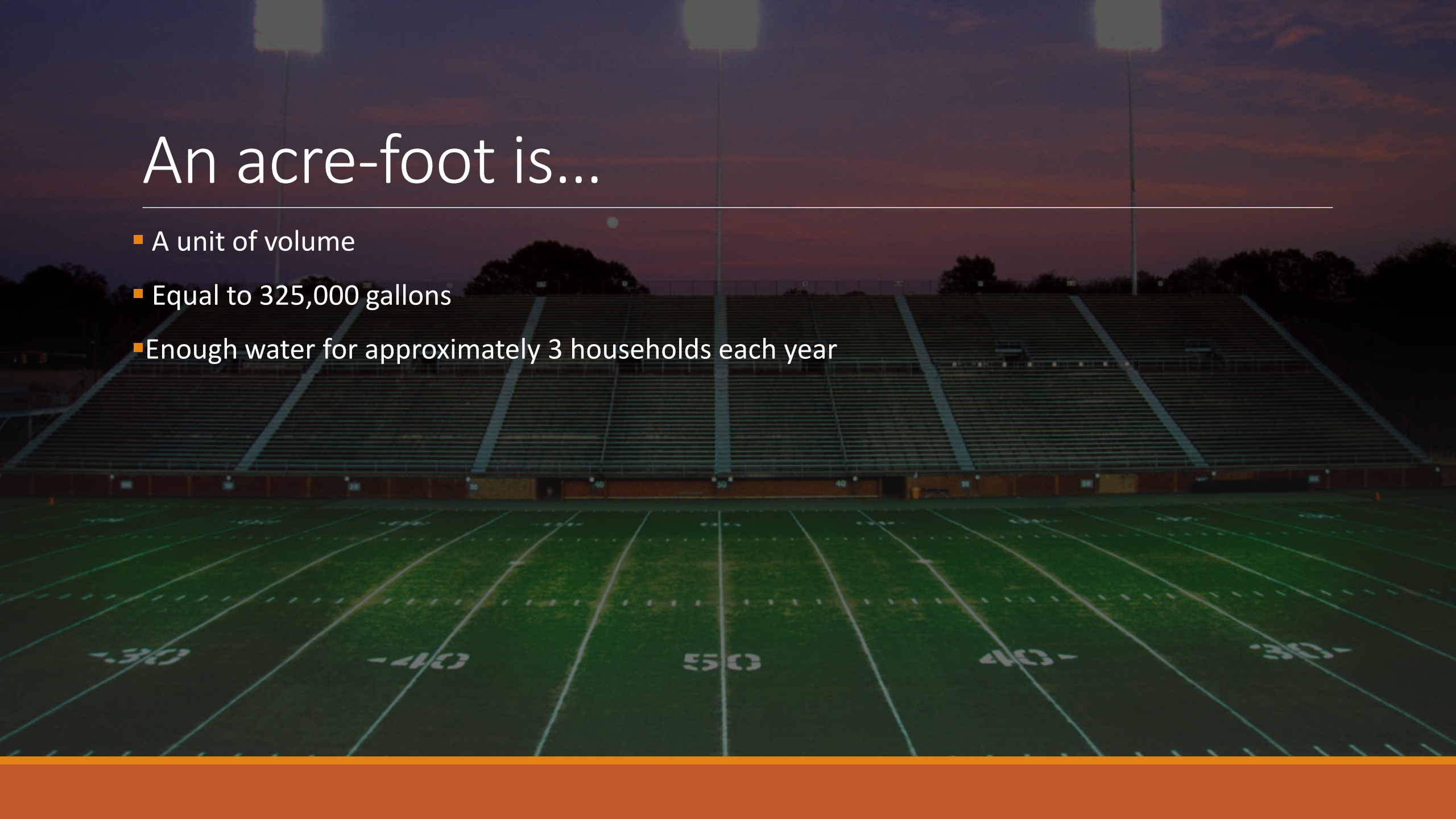
State Water Project Overview

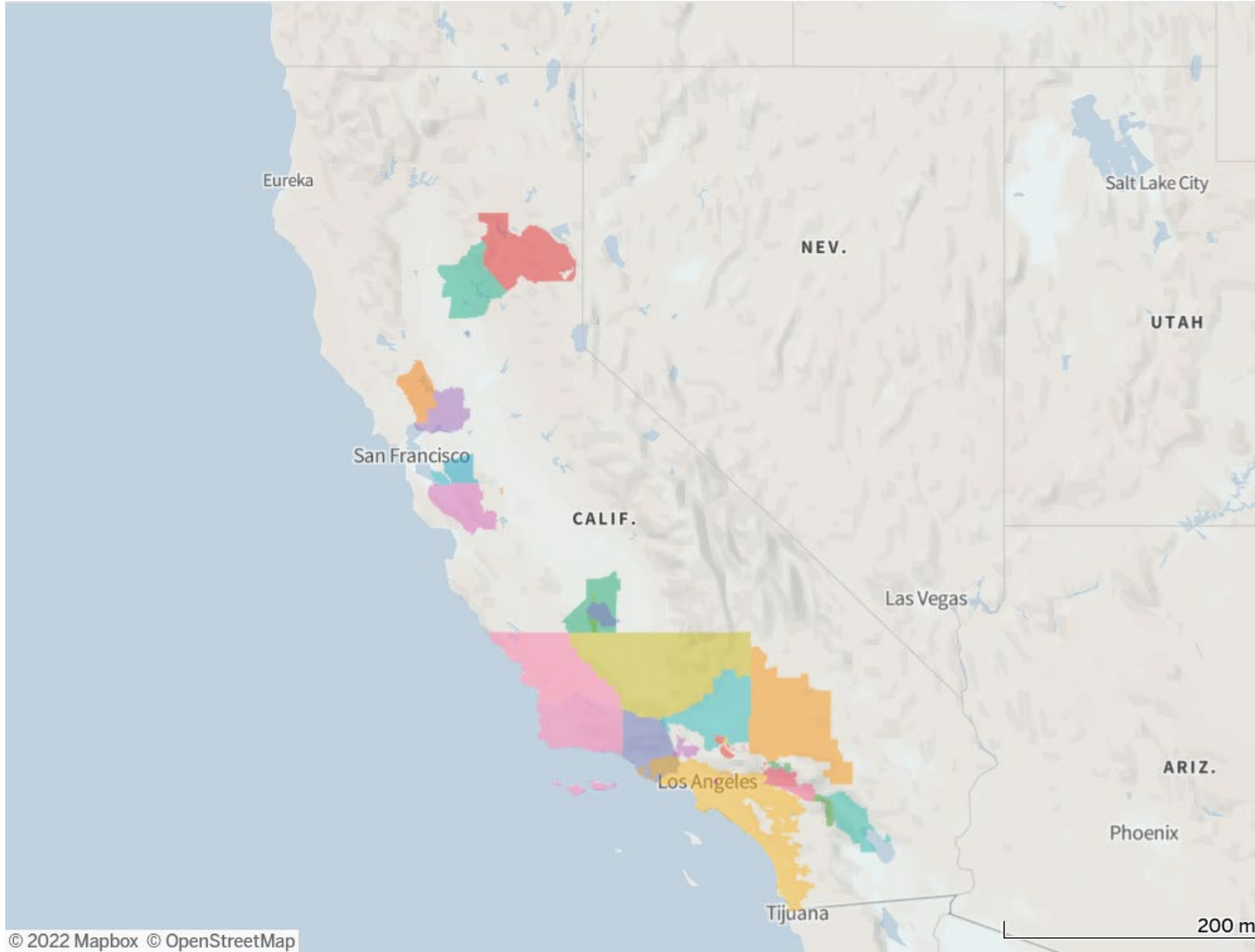
BOARD OF DIRECTORS

JANUARY 26, 2026

An acre-foot is...

- A unit of volume
- Equal to 325,000 gallons
- Enough water for approximately 3 households each year





The State Water Project moves water from Northern California to Southern California

- 29 State Water Contractors
- Capable of moving over 4 million acre-feet per year
- Uses the snowpack from the Sierra's as a "reservoir"
- Provides water for over 25 million people
- Sustains billions of dollars to California's economy

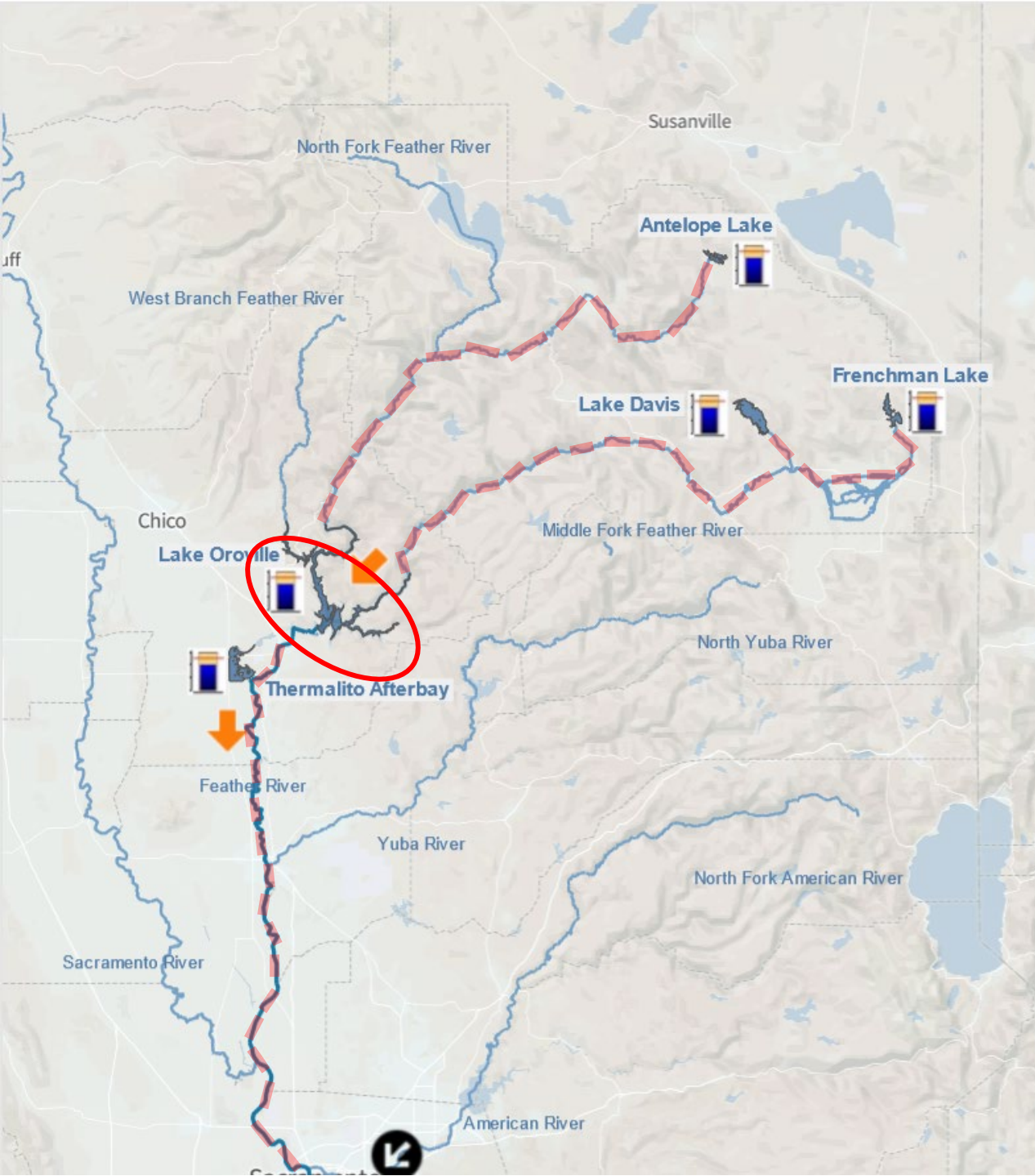
There are many assets on along the SWP but some of the major assets include...

- 30 dams
- 20 reservoirs
- 29 pumping and generating plants
- 700 miles of aqueducts, canals, and pipelines

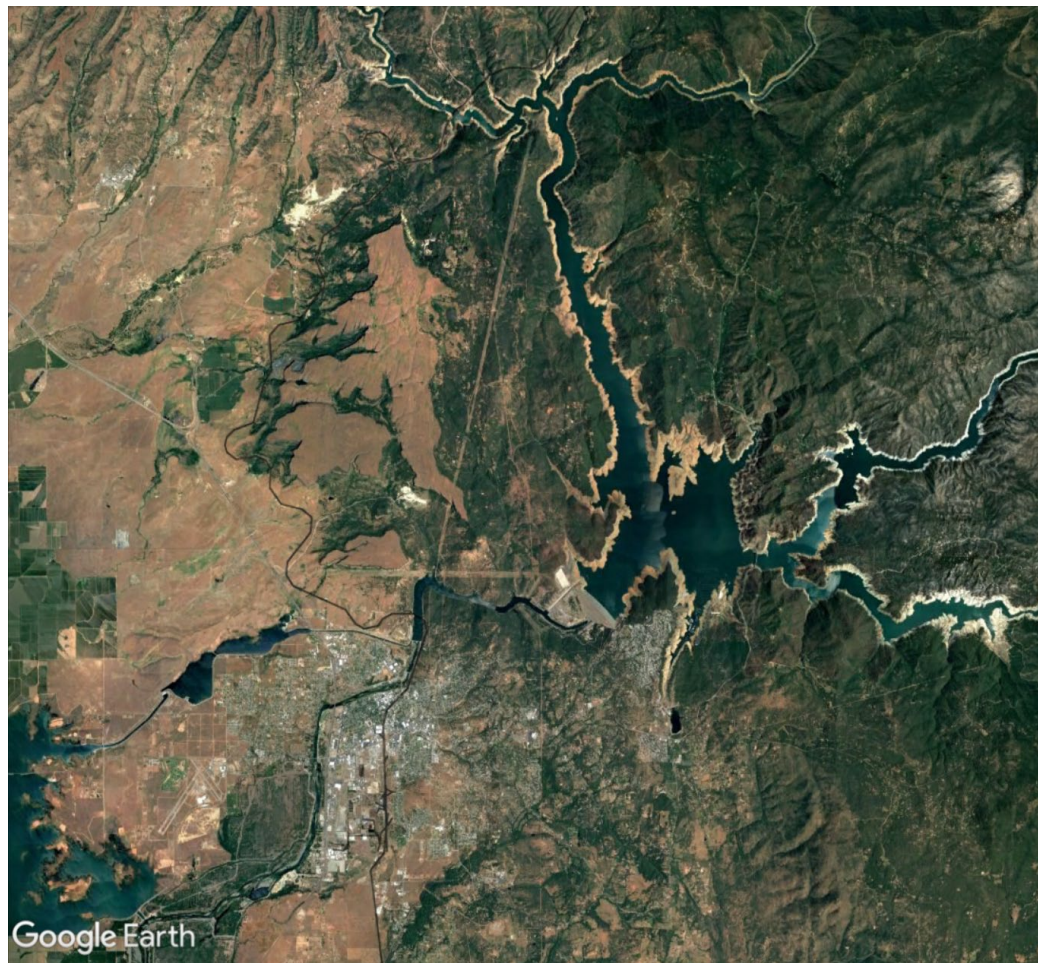




The SWP is broken up into 5 management zones (Field Divisions)



Oroville Field Division

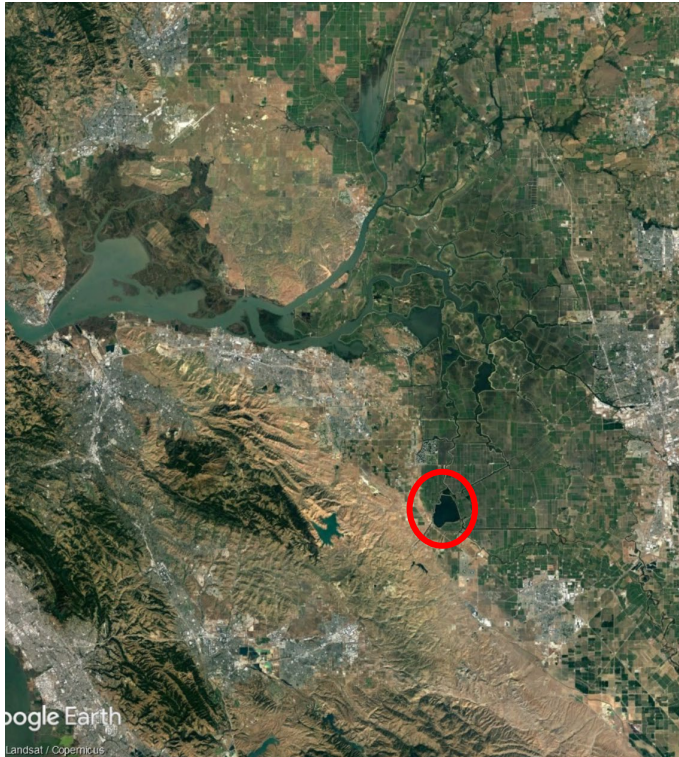


Lake Oroville

- WATER FLOWS FROM LAKE OROVILLE TO THE FEATHER RIVER WHICH SUBSEQUENTLY FLOWS INTO THE SACRAMENTO RIVER



Delta Field Division



Sacramento-San Joaquin Delta

WATER FLOWS FROM THE SACRAMENTO RIVER INTO THE DELTA



Clifton Court Forebay

- WATER FLOWS FROM THE DELTA INTO THE CLIFTON COURT FOREBAY
- WATER IS THEN PUMPED OUT OF CLIFTON COURT FOREBAY INTO THE CALIFORNIA AQUEDUCT

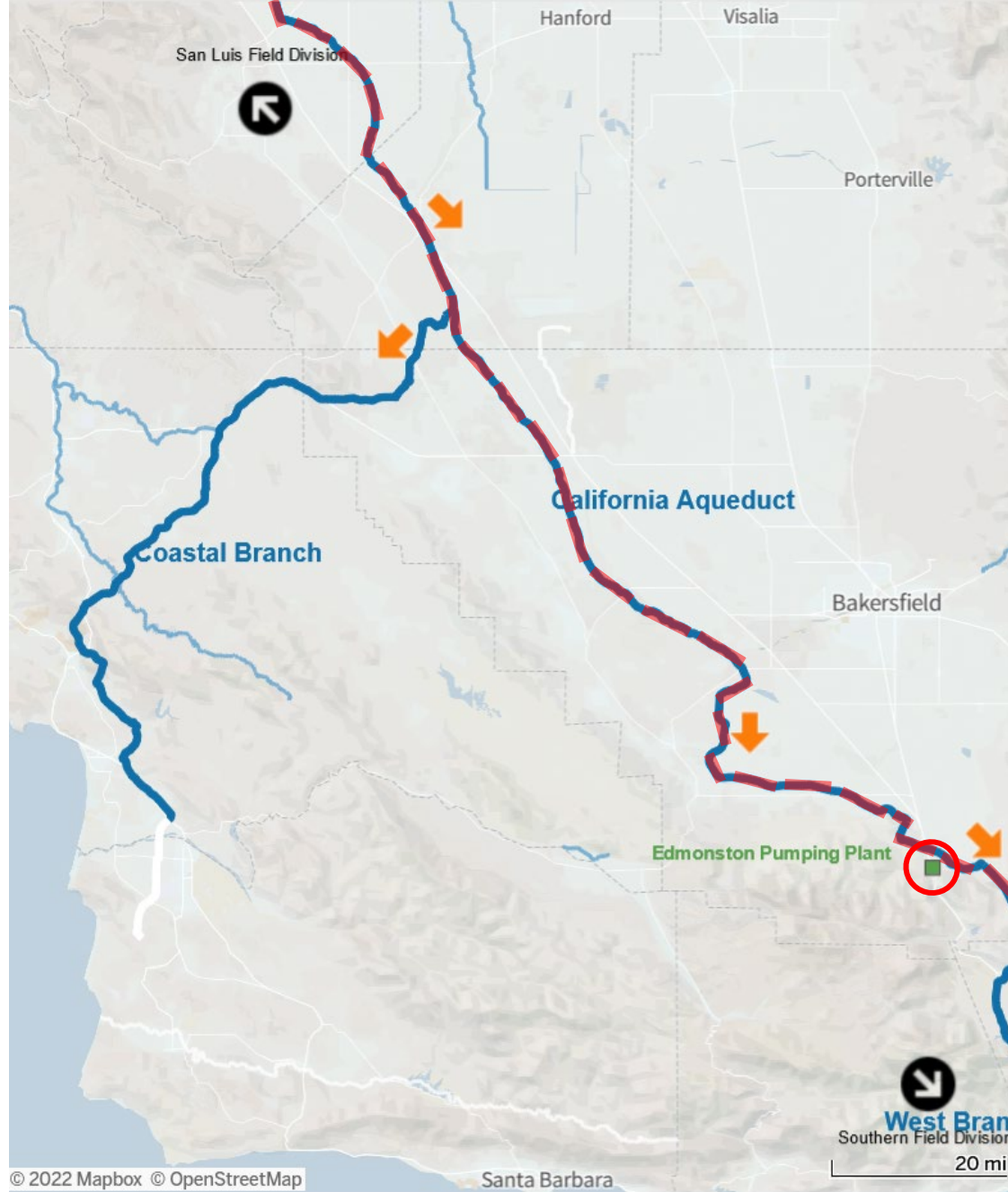


San Luis Field Division



San Luis Reservoir

- WATER FLOWS THROUGH THE CALIFORNIA AQUEDUCT AND CAN BE STORED IN SAN LUIS RESERVOIR
- SAN LUIS RESERVOIR CAN STORE APPROXIMATELY 2 MILLION ACRE-FEET

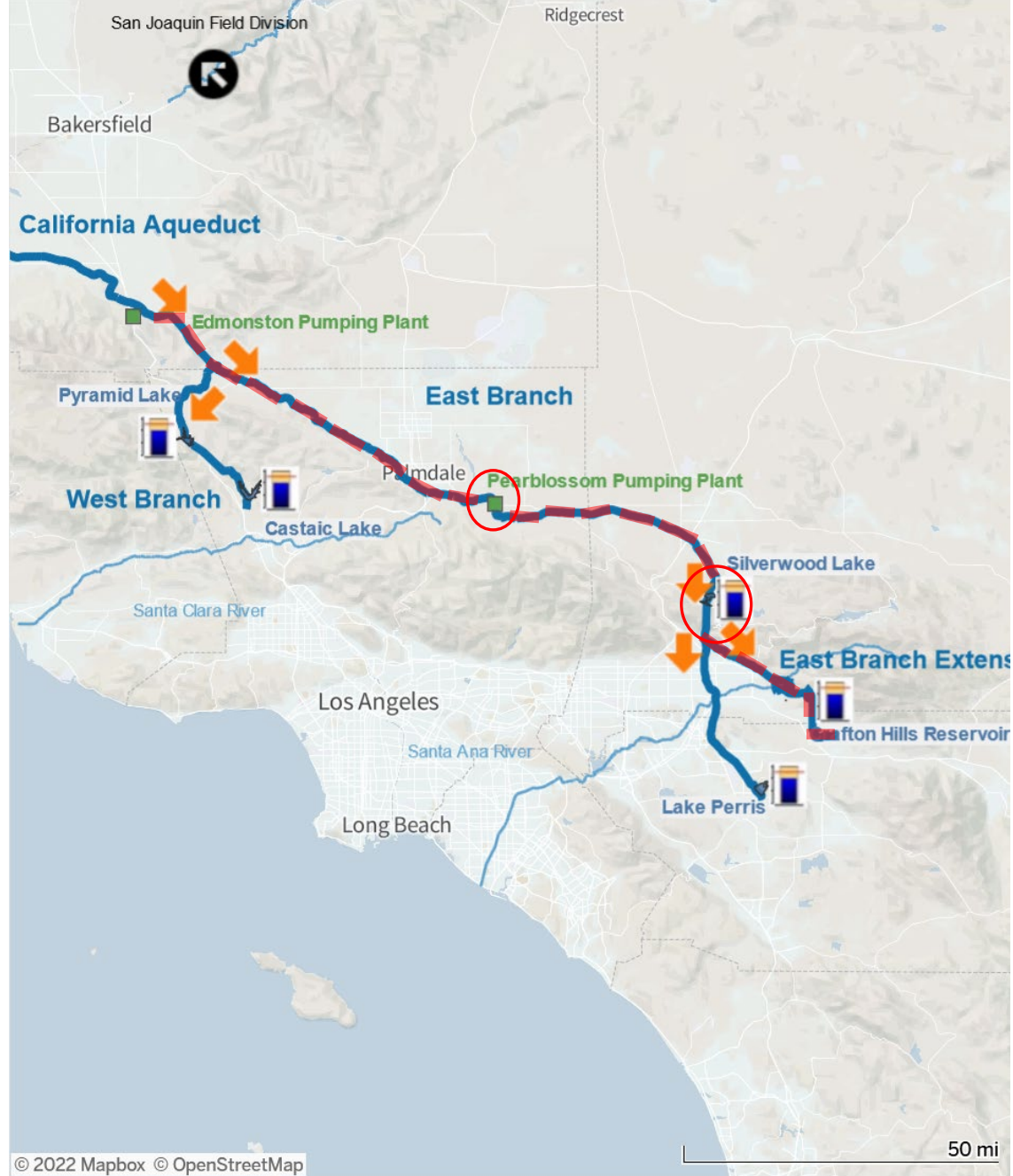


San Joaquin Field Division



Edmonston Pumping Plant

- PUMPS WATER FROM THE AQUEDUCT UP 2,000 FT IN ELEVATION TO CONTINUE IN THE AQUEDUCT
- LARGEST SINGLE LIFT PUMP STATION IN THE WORLD

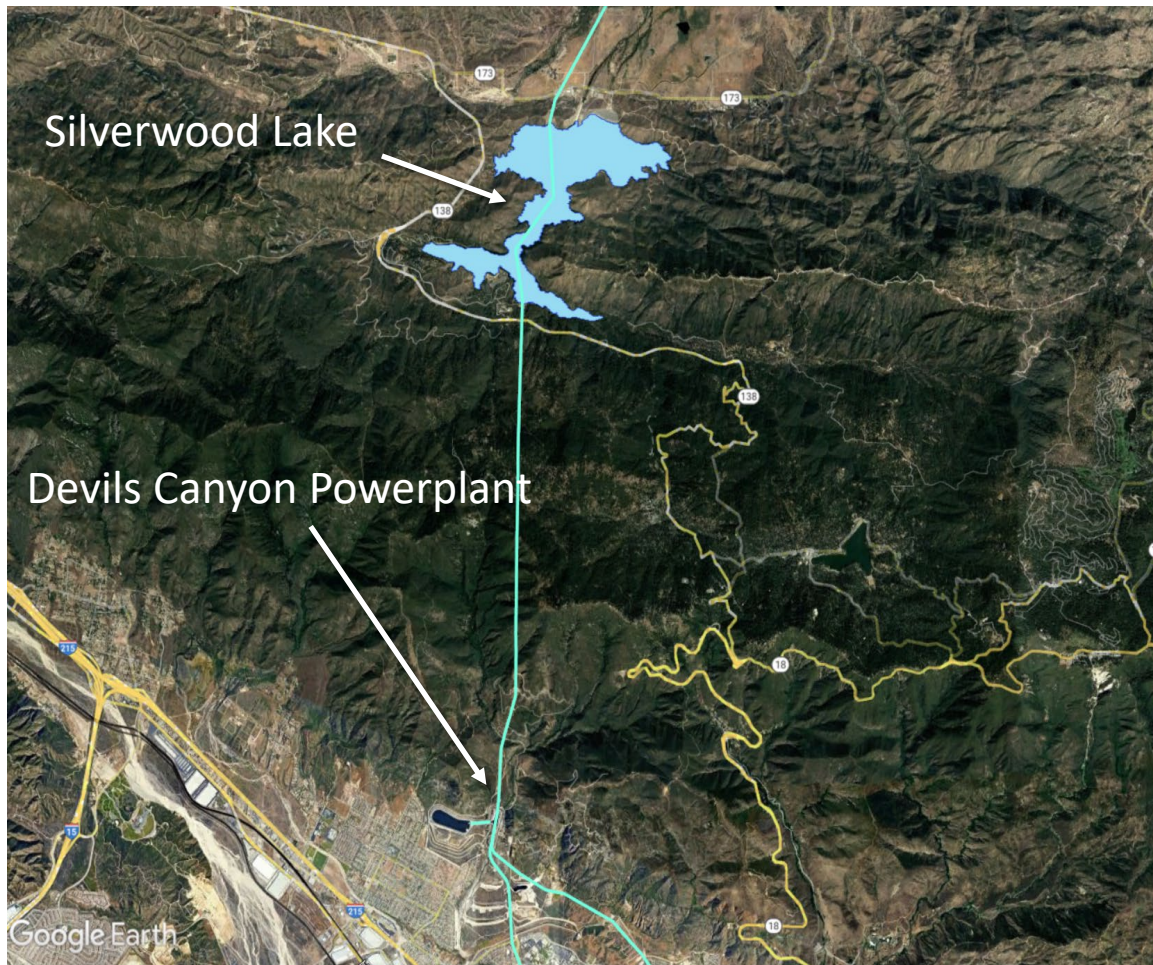


Southern Field Division



Pearblossom Pumping Plant

- PUMPS WATER FROM THE AQUEDUCT UP 500 FT IN ELEVATION OVER THE MOUNTAIN TO CONTINUE IN THE AQUEDUCT



Silverwood Lake and Devils Canyon Powerplant

- WATER MOVES FROM THE AQUEDUCT INTO SILVERWOOD LAKE
- WATER FLOWS FROM SILVERWOOD LAKE THROUGH DEVILS CANYON TO START THE EBX



East Branch Extension

- WATER FLOWS FROM DEVILS CANYON INTO THE EAST BRANCH EXTENSION
- SBVMWD AND SGPWA ARE THE ONLY TWO PARTICIPANTS FOR THIS PIPELINE
- END OF THE LINE FOR THE STATE WATER PROJECT



State Water Project Recap

- The State Water Project moves upwards of 4 million acre-feet from Northern CA to Southern CA
- Water moves from...
 - Lake Oroville to the Sacramento-San Joaquin Delta
 - Delta to San Luis Reservoir
 - San Luis Reservoir to Edmonston Pump Station
 - Edmonston Pump Station to Pearblossom Pump Station
 - Pearblossom to Lake Silverwood/Devils Canyon
 - Lake Silverwood/Devils Canyon to SGPWA
- Water travels over 500 miles before it gets to SGPWA

For more information please visit:

water.ca.gov

swc.org