

An aerial photograph of a water treatment facility. In the foreground, there are two large, dark, rectangular basins. A dirt road or path runs along the left side of these basins. In the background, there are more basins, some with water, and a residential area with houses and trees. The landscape is hilly and arid, with mountains visible in the distance under a clear sky.

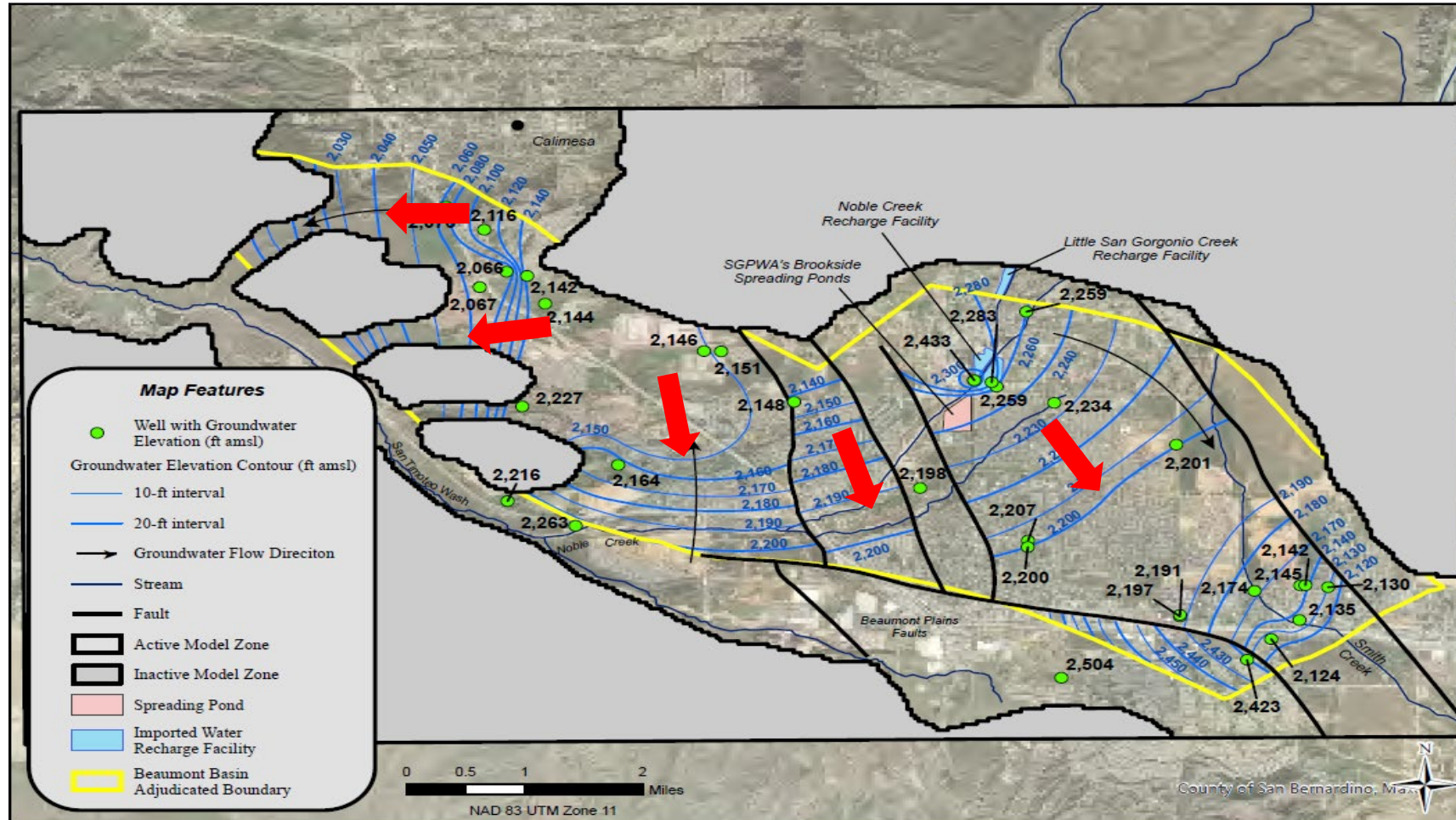
Overview of Groundwater Mounding/Monitoring Wells

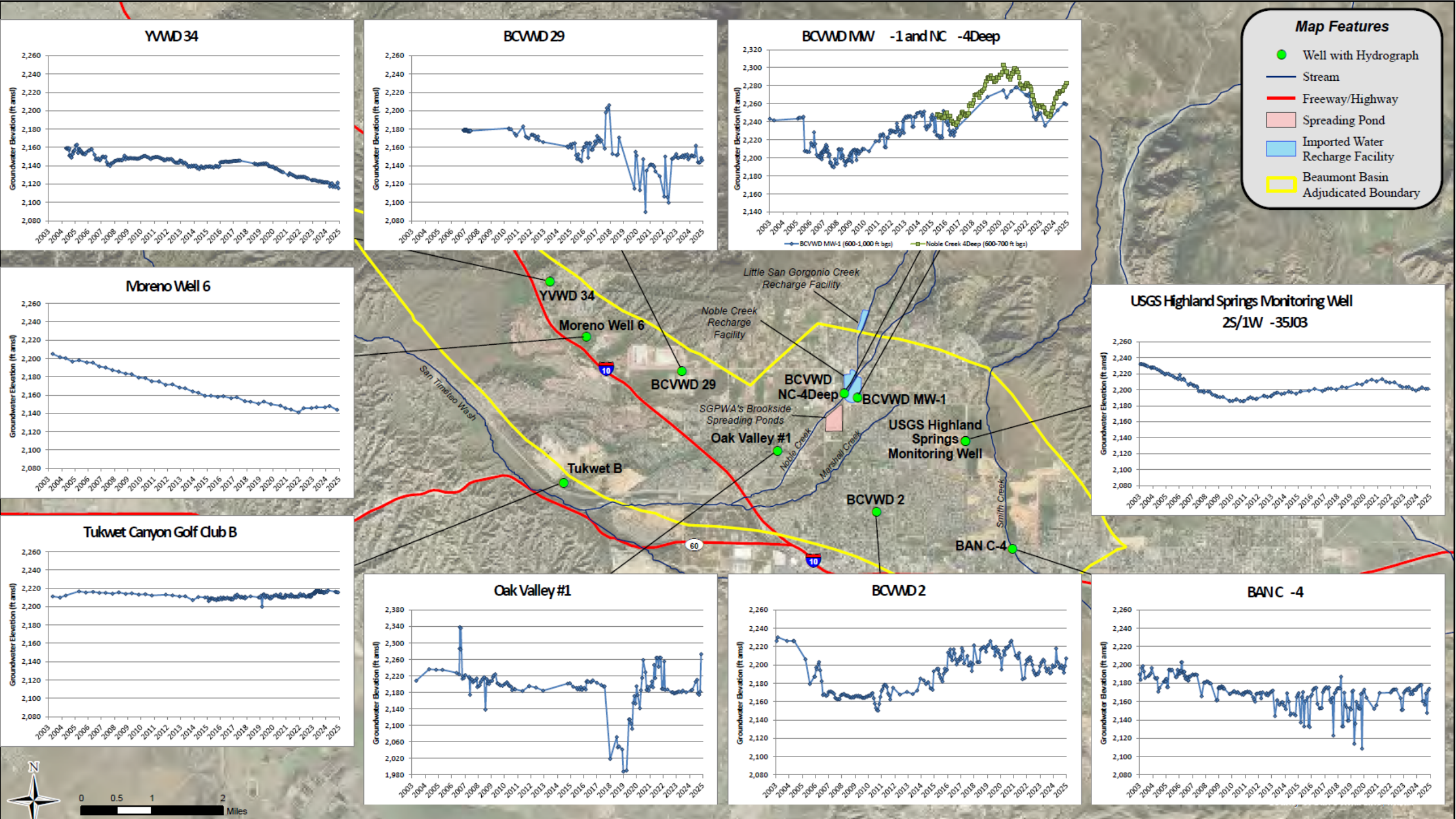
November 3, 2025

Monitoring Well Overview Map

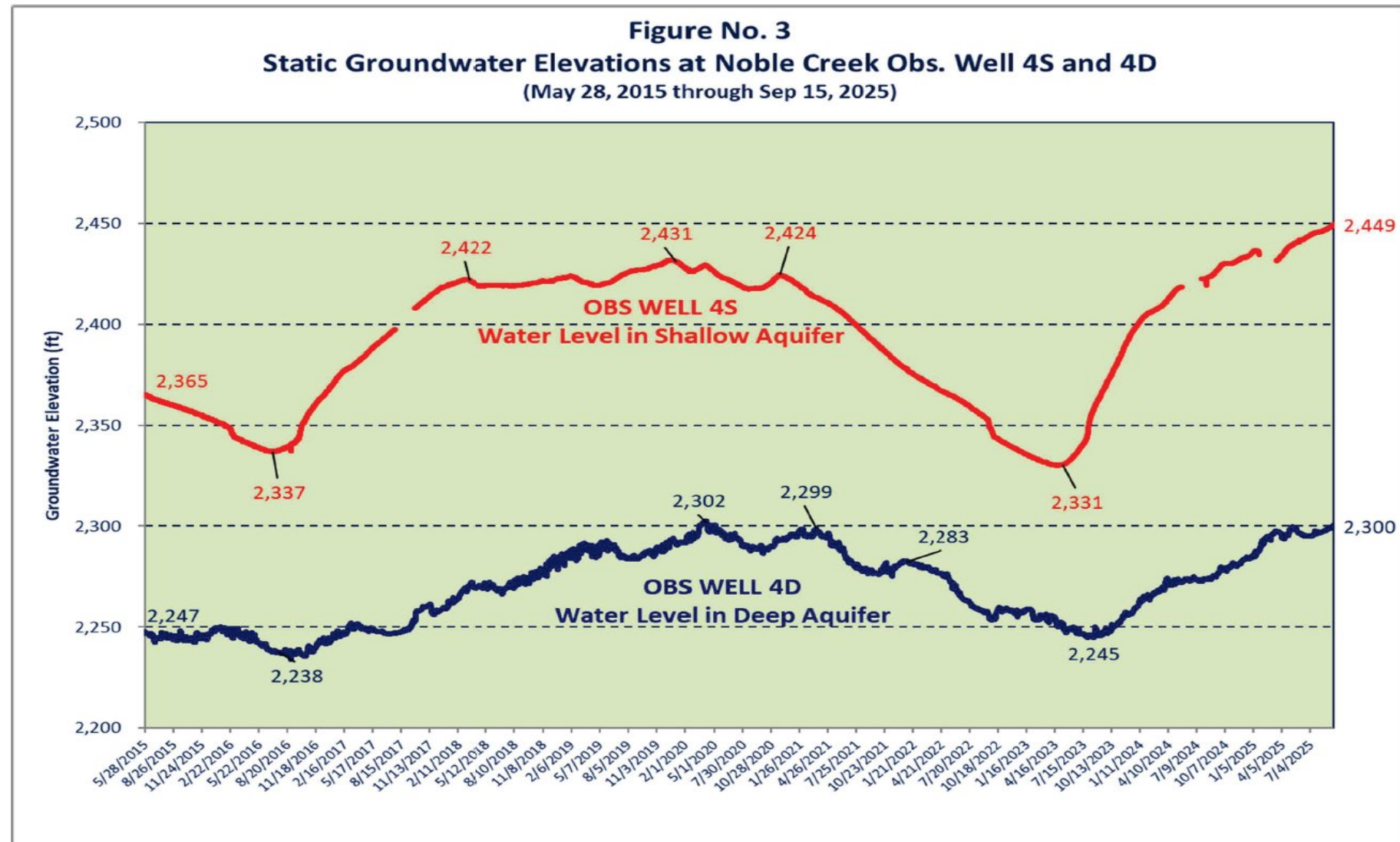


Gradient of Groundwater Flow

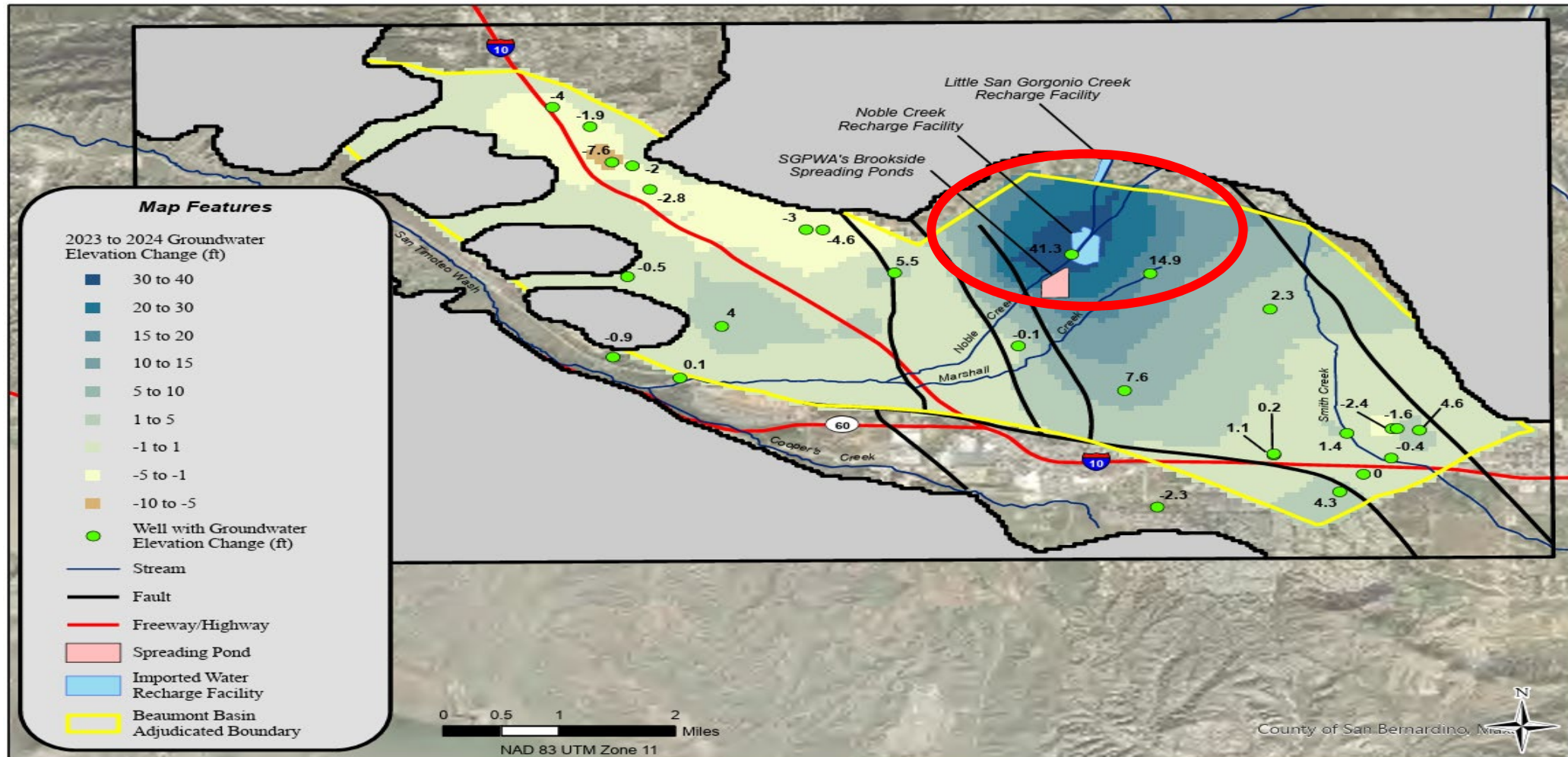




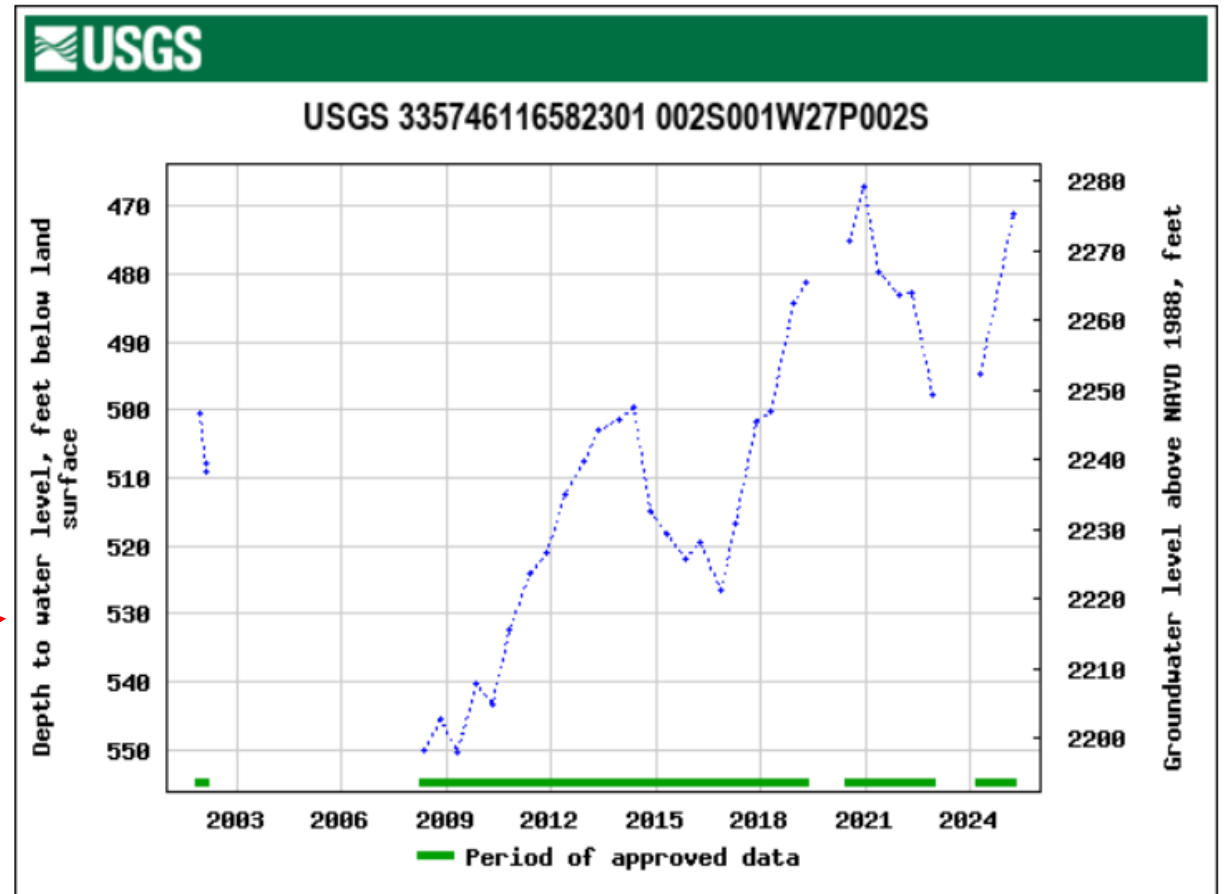
Groundwater Levels Near Recharge Facilities



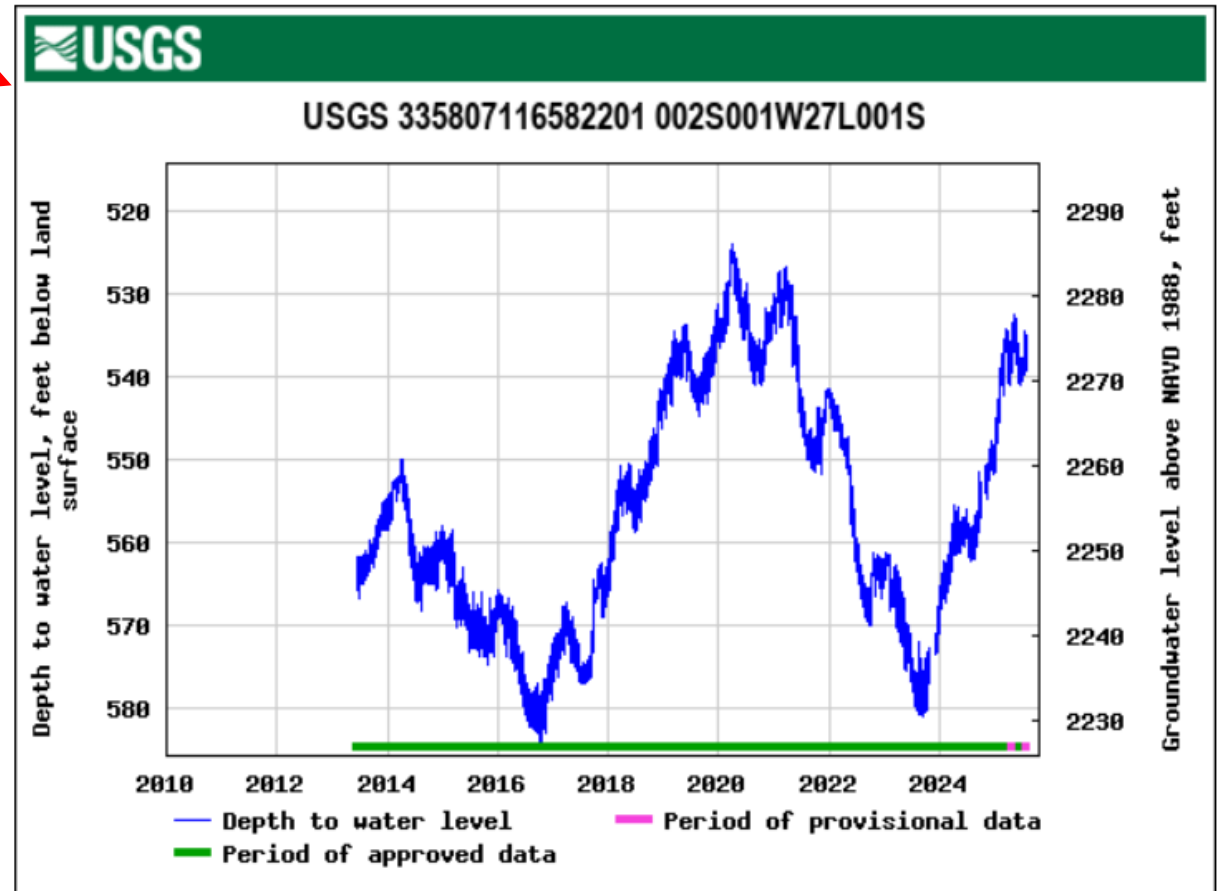
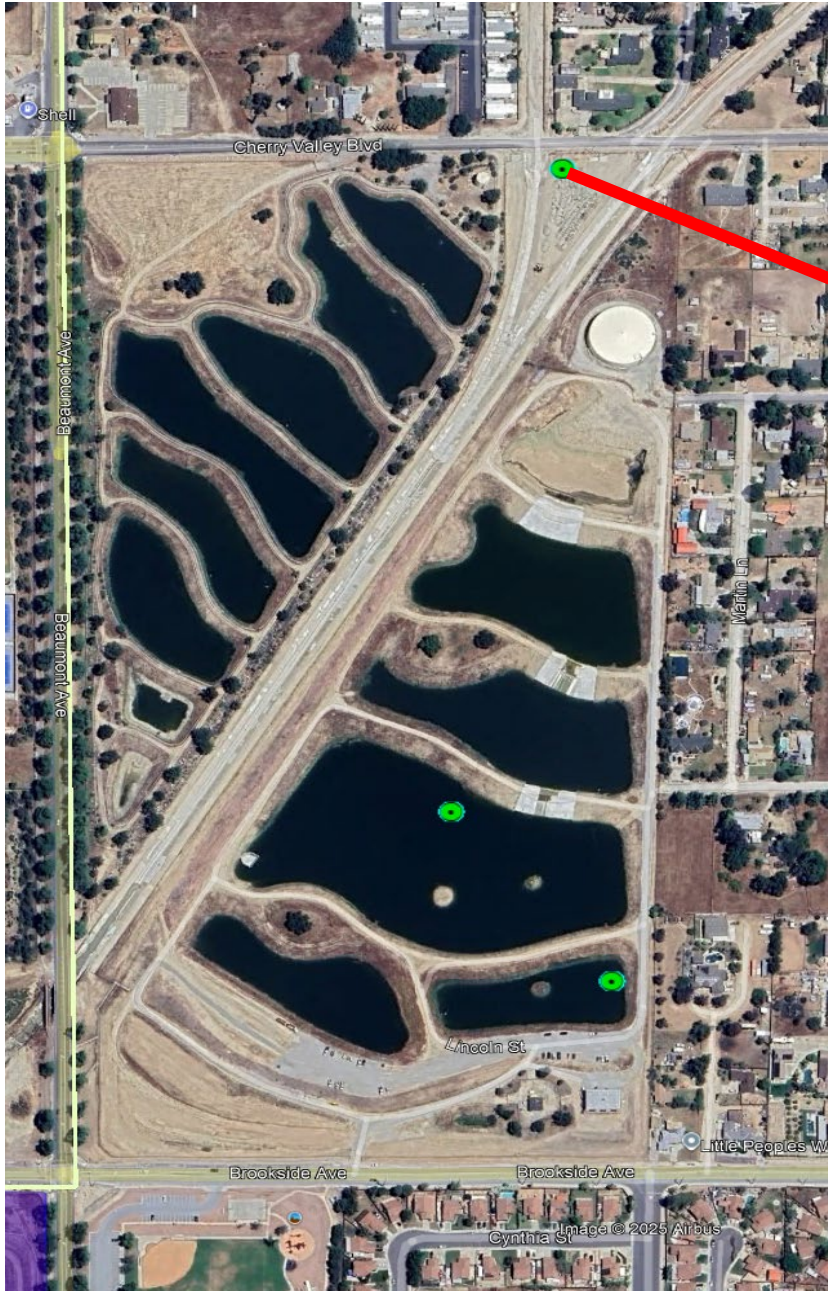
Change in Groundwater levels



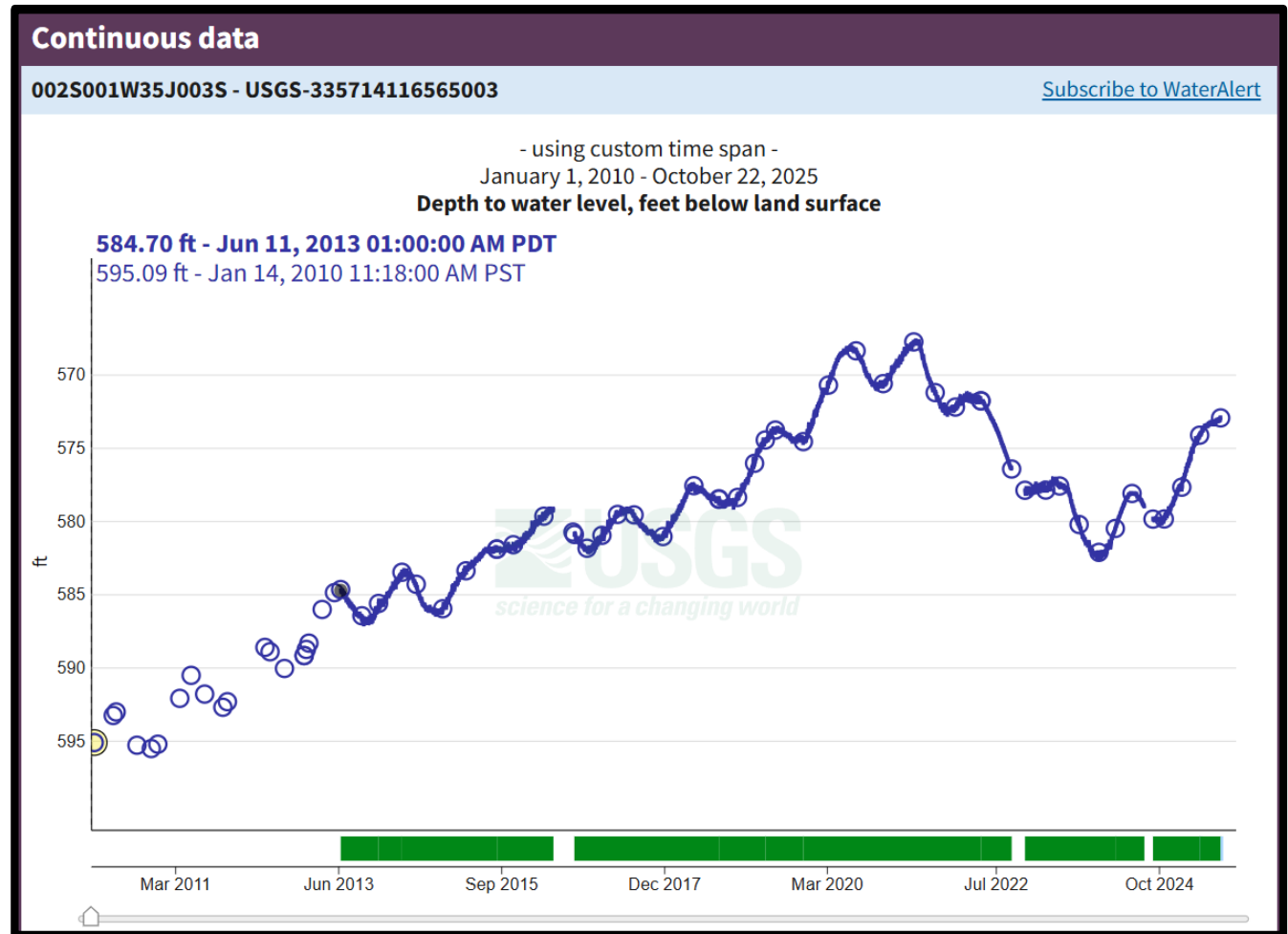
USGS Water Level Measurements



USGS Water Level Measurements



USGS Water Level Measurements



USGS Water Level Measurements

