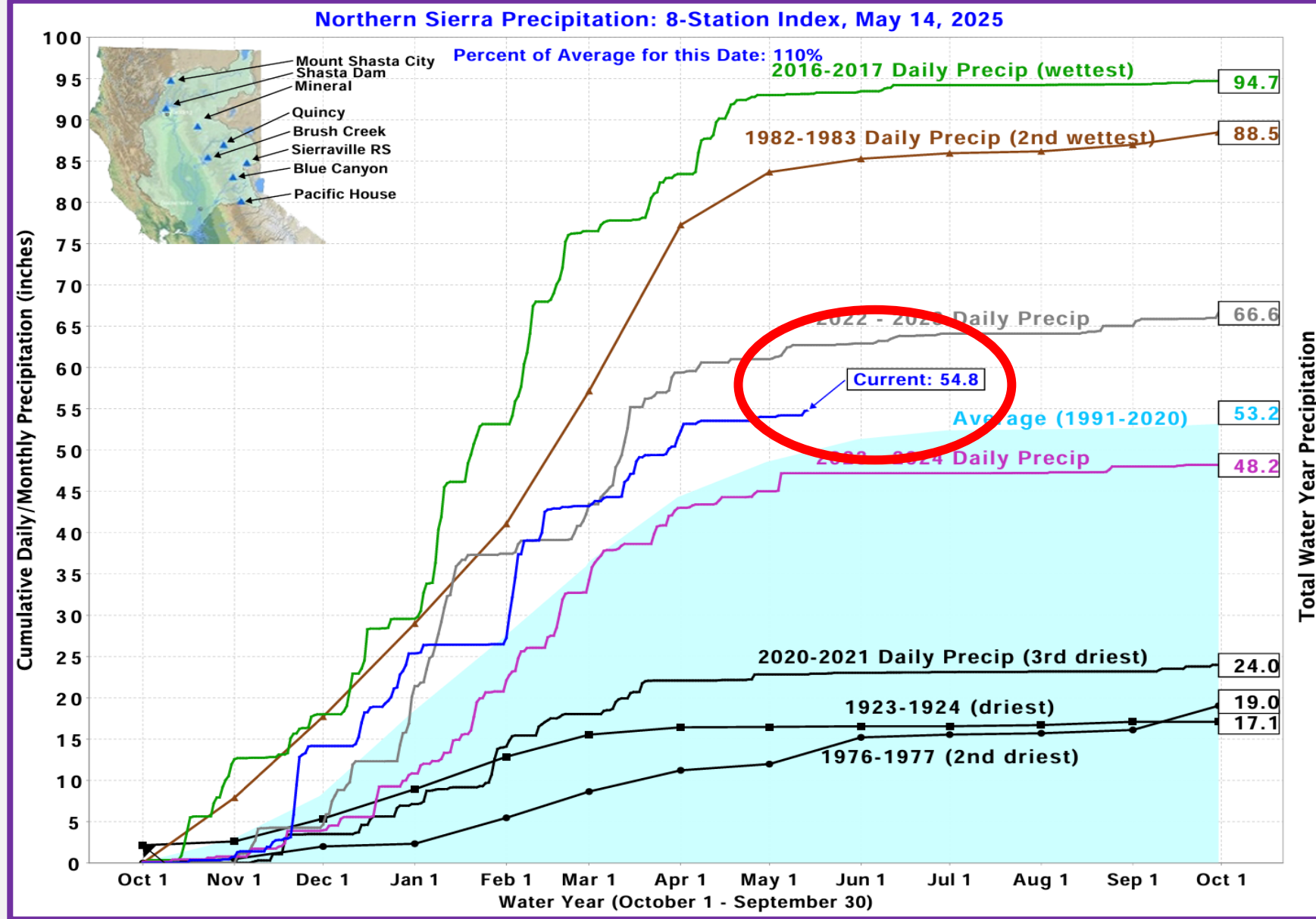


# Water Conditions Report

**Board of Directors Meeting  
May 19, 2025**





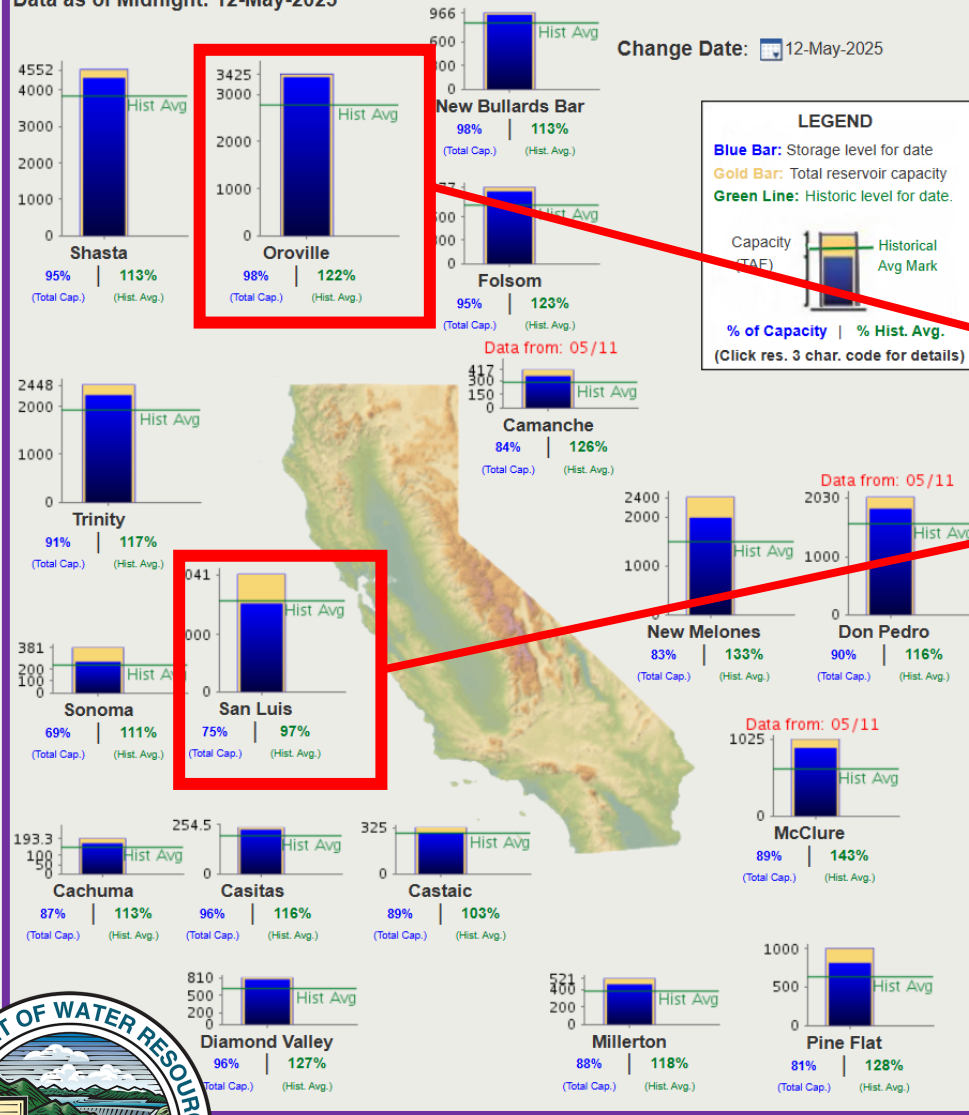


## Precipitation Stations – North Sierra

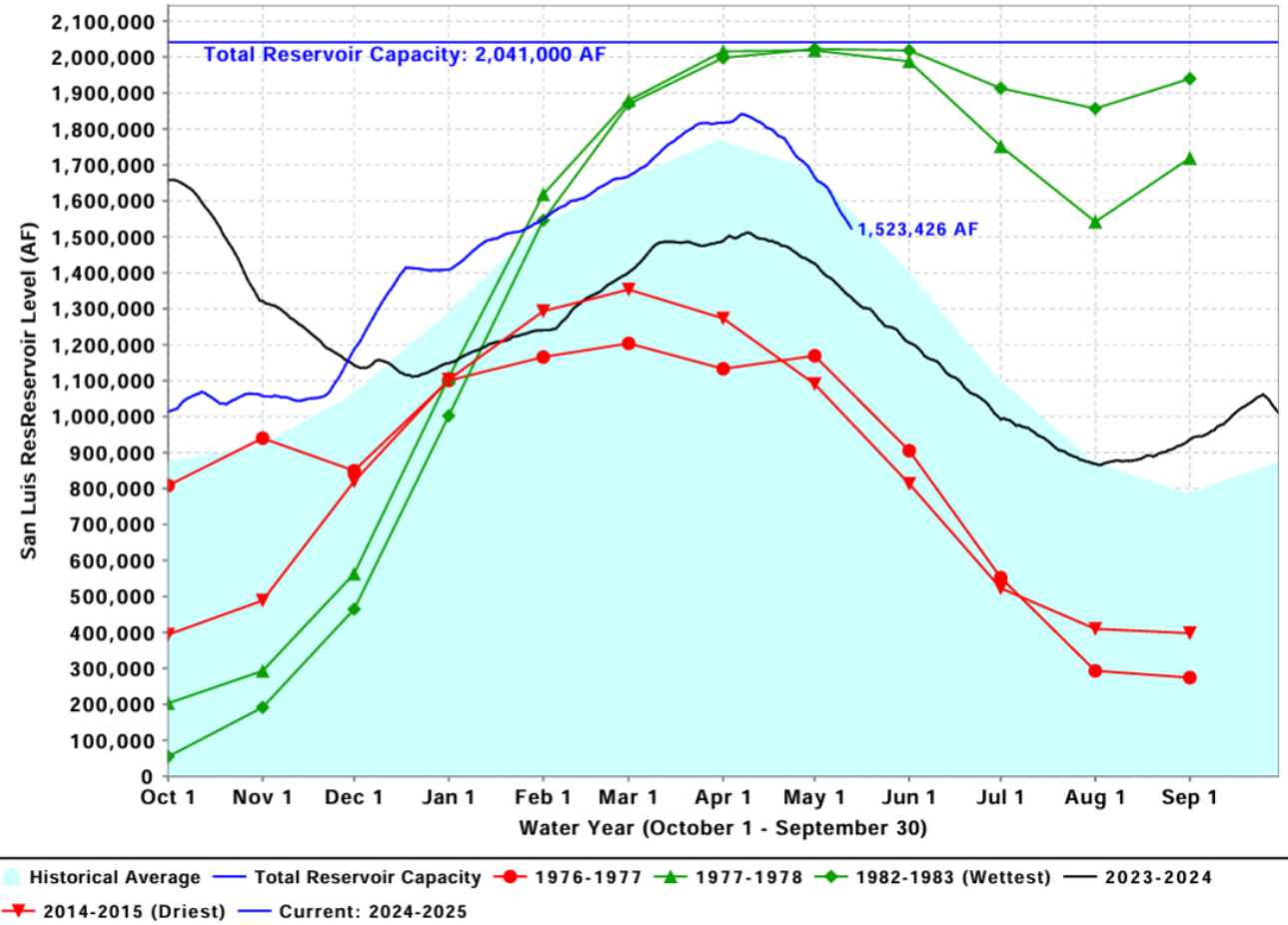


# CURRENT CONDITIONS: MAJOR WATER SUPPLY RESERVOIRS:12-MAY-2025

Data as of Midnight: 12-May-2025



## San Luis Res Levels: Various Past Water Years and Current Water Year, Ending At Midnight May 13, 2025



# Current Reservoir Conditions

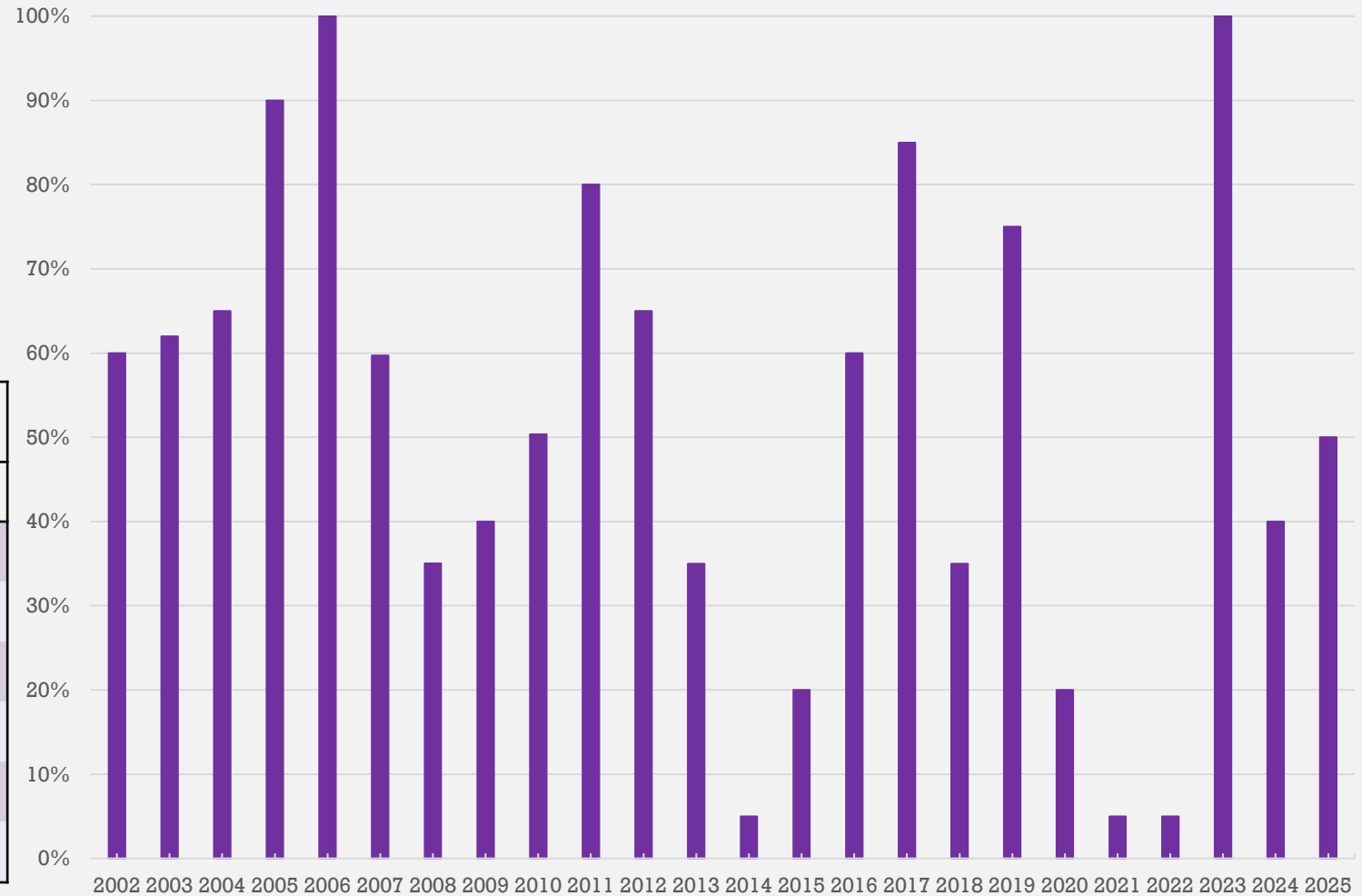
## SWP Allocation Timeline

December 2, 2024: 5% Allocation  
December 23, 2024: 15% Allocation  
January 28, 2025: 20% Allocation  
February 25, 2025: 35% Allocation  
March 25, 2025: 40% Allocation  
April 29, 2025: 50% Allocation

### SGPWA Portfolio @ 50%

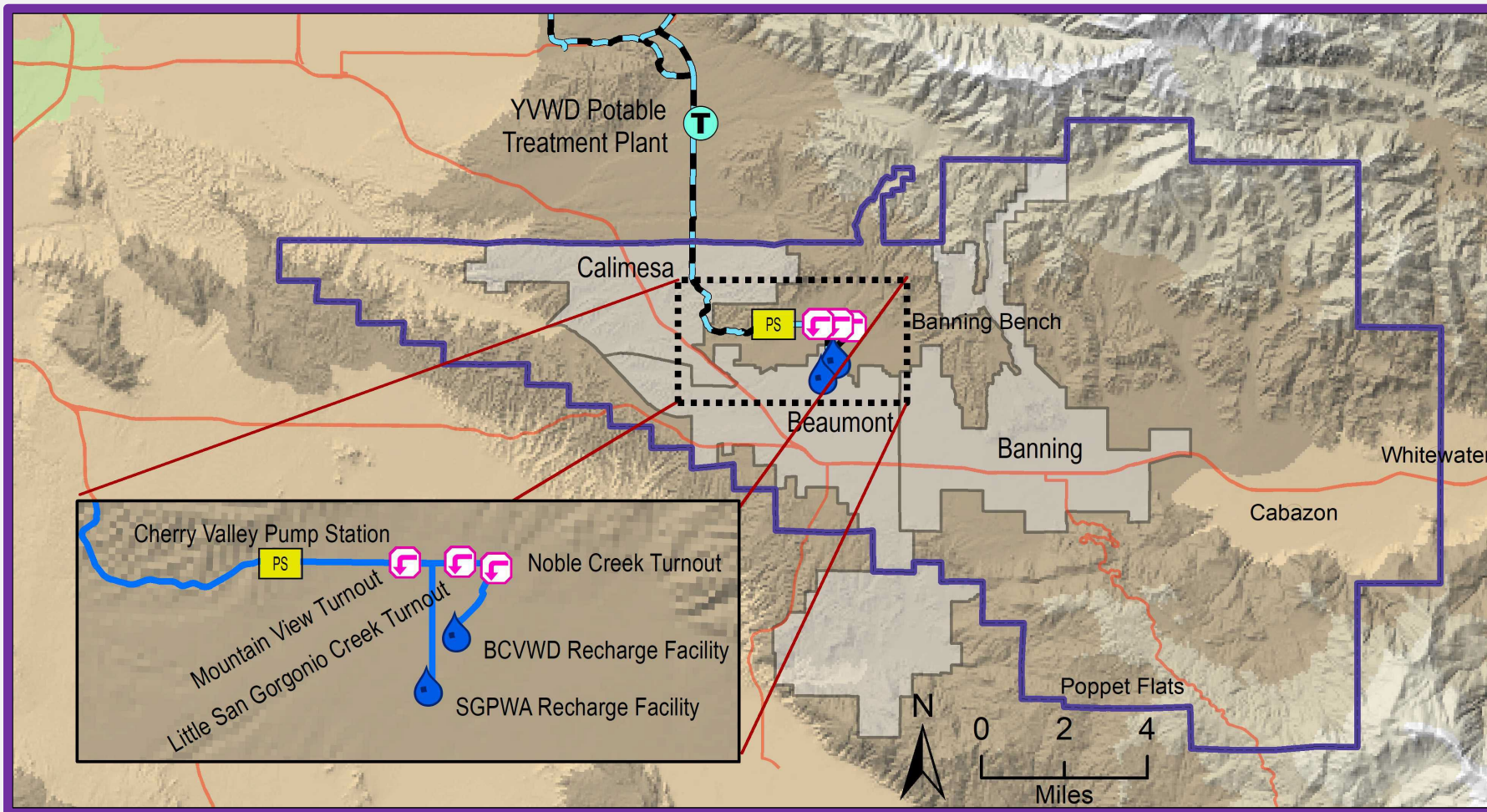
Source	Total (AF)	Delivered
SWP – Carryover	1,217	✓
SWP – Table A	8,650	
SWP – Ventura	5,000	
Non-SWP - Nickel Water	1,700	✓
City of Yuba City Purchase	3,000	✓
<b>Total Available Supply</b>	<b>19,567</b>	

Historic SWP Allocations



# 2025 SWP Allocation & Portfolio Update





	Jan	Feb	Mar	Apr	May	Jun	Jul	Aug	Sept	Oct	Nov	Dec	Total
Recharge	53	1,034	2,306	1,973	1,500								6,866
Direct	0	0	13	0	0								13

*\*Estimated*

*\*From Local Storage*





# Local Deliveries 2025 (acre-feet)

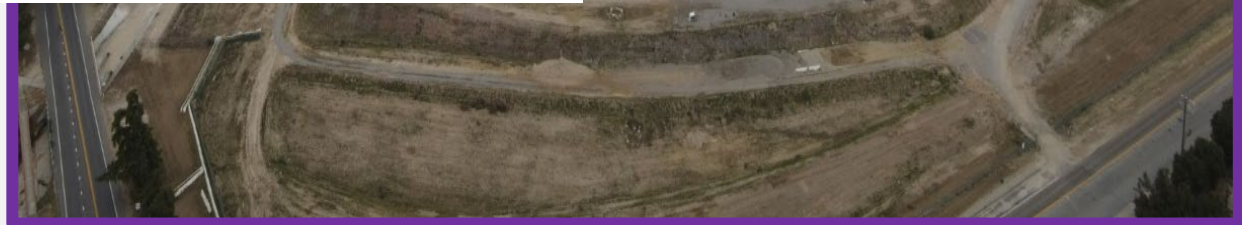
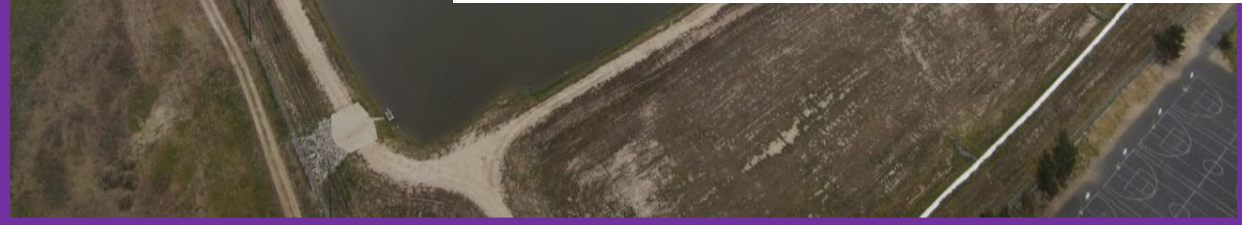
*Subject to Final Verification*







Recharge Facility photos to be  
updated prior to the Board of  
Directors meeting on May 19, 2025



Brookside East Recharge Facility

BCVWD Recharge Facilities



**May Recharge Photos**

