

SAN GORGONIO PASS WATER AGENCY

NOTICE OF INTENT TO ADOPT A MITIGATED NEGATIVE DECLARATION

NOTICE IS HEREBY GIVEN, in compliance with California Environmental Quality Act Guidelines §15072, to responsible agencies, trustee agencies, interest groups and the general public that the San Gorgonio Pass Water Agency (SGPWA) plans to adopt a Mitigated Negative Declaration for the County Line Road Recharge Basin and Turnout Facility Project (Project). Anyone desiring to comment on the IS/MND may do so in writing within the 30-day public review period, commencing on August 7, 2024, and ending September 5, 2024.

Project Title: County Line Road Recharge Basin and Turnout Facility Project

Project Location: The Project spans the jurisdictions of two agencies in California: SGPWA and the City of Calimesa. More specifically, the Project site is located along and south of County Line Road which separates Calimesa, Riverside County from Yucaipa, San Bernardino County. The Project pipelines are located mostly within City ROW And the recharge basin is located on APN 411-150-027, which will require land division for the purpose of the recharge basin site. The Project is depicted on the Yucaipa, California 7.5-minute U.S. Geological Survey quadrangle map within Sections 13 and 14 of Township 2 South, Range 2 West.

Project Description: SGPWA proposes to construct the County Line Road Recharge Basin and Turnout Project (Project). The Project is a collaborative effort between SGPWA as California Environmental Quality Act (CEQA) Lead Agency and San Bernardino Valley Municipal Water District as Responsible Agency, to provide imported water to communities located within the Cities of Calimesa and Yucaipa, and the communities served by South Mesa Water Company.

The Project involves construction, operation, and maintenance of a groundwater recharge basin located south of County Line Road and west of 4th Street plus approximately 956 linear feet of new pipeline along 4th Street to connect the recharge basin to the existing pipeline within County Line Road. The recharge basin will have a maximum excavation depth of 25-feet and 2.6-acres of infiltrating capacity on a 7-acre vacant site owned by SGPWA. A scientific groundwater monitoring well may be constructed adjacent to the recharge basin to a depth of up to 1,000 feet. The Project also includes an elevation control basin adjacent to the recharge basin in the event of the recharge basin overflowing. The elevation control basin has a surface area of 0.25-acre and storage capacity of 1.7 acre-feet. The Project will relocate an existing potable water pipeline from where it currently bisects the recharge basin property to the westerly property line. Buena Vista Court will also be repaved and improved with raised curbs and crown for a distance of approximately 600-feet. A Turnout Agreement between Valley District and California Department of Water Resources, and an Operations Agreement between SGPWA and Valley District are also part of the Project. Lastly, the Project also involves construction of a new turnout to connect the existing pipeline within County Line Road to the existing East Branch Extension pipeline within Bryant Street (approximately 160 linear feet). Refer to Figure 1 – Project Site.

Cortese List Notice: Pursuant to Public Resources Code § 21092.6(a), the Project site is not included on a list of hazardous materials sites compiled pursuant to Government Code § 65962.5 (California Department of Toxic Substances Control List of various hazardous sites).

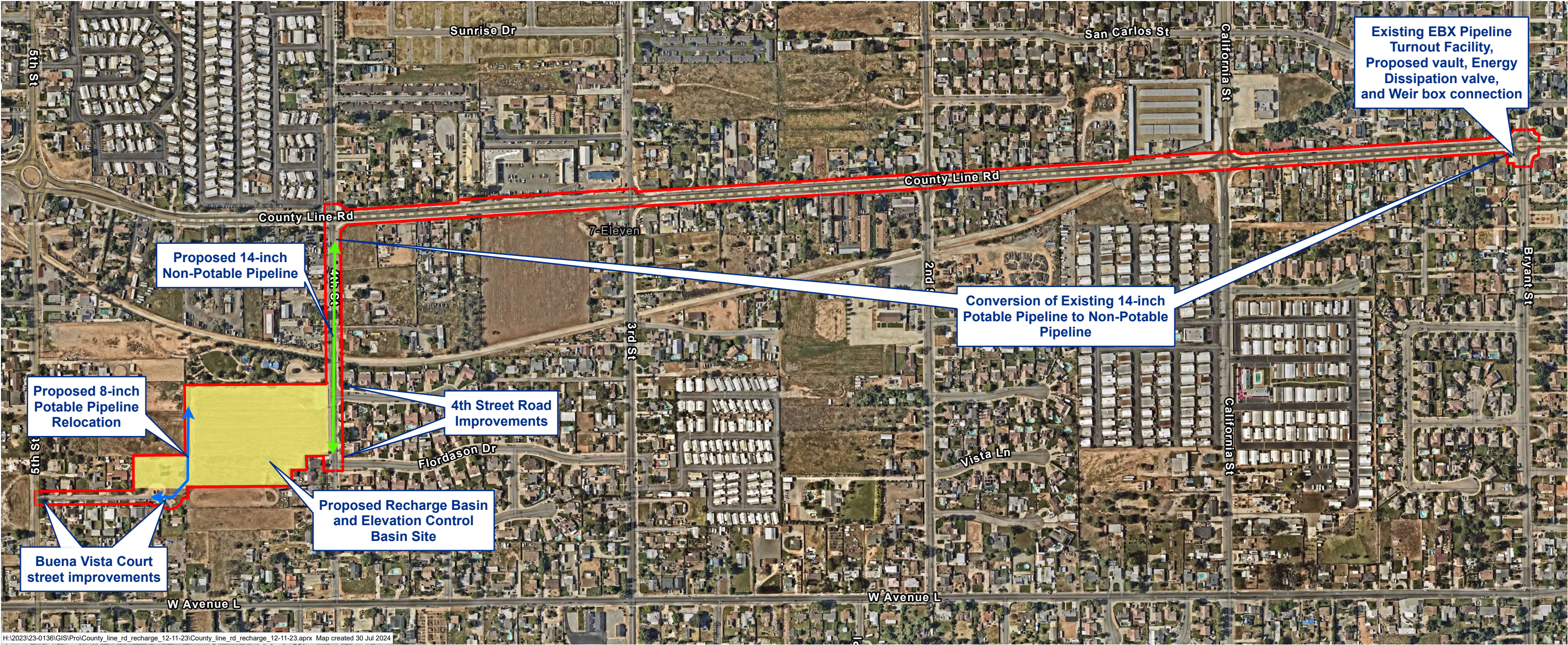
Public Meeting: SGPWA's Board of Directors will consider the proposed project at a publicly-noticed Board of Directors meeting scheduled for October 7, 2024, at 1:30 p.m. Meetings are typically held at SGPWA's Office located at 1210 Beaumont Avenue, Beaumont, California, 92223. The public may attend the meeting in person or virtually. Members of the public may provide public comments in-person at the meeting or via Zoom.

Document Availability: Copies of the Initial Study and the proposed Mitigated Negative Declaration are available for public review on the SGPWA website at www.sgpwa.com and can be inspected at the SGPWA office, located at 1210 Beaumont Avenue, Beaumont, CA 92223. Office hours are Monday through Thursday, 8:00 AM to 5:00 PM, and every other Friday, 8:00 AM to 4:30 PM. Additionally, all documents referenced in the Initial Study can be reviewed at these locations.

Contact person: Written comments may be submitted to: Emmett Campbell, Sr. Water Resources Planner, SGPWA, 1210 Beaumont Avenue, CA 92223 or emailed to: ecampbell@sgpwa.com.

Figure 1 - Project Site

County Line Road Recharge Basin
and Turnout Project



LEGEND

Project Site

0230460

Feet

Sources: Nearmap, 2024.