

Discussion Item 2.2 (pg. 5)

Lance Eckhart, PG, CHg - General Manager, San Geronio Pass Water Agency

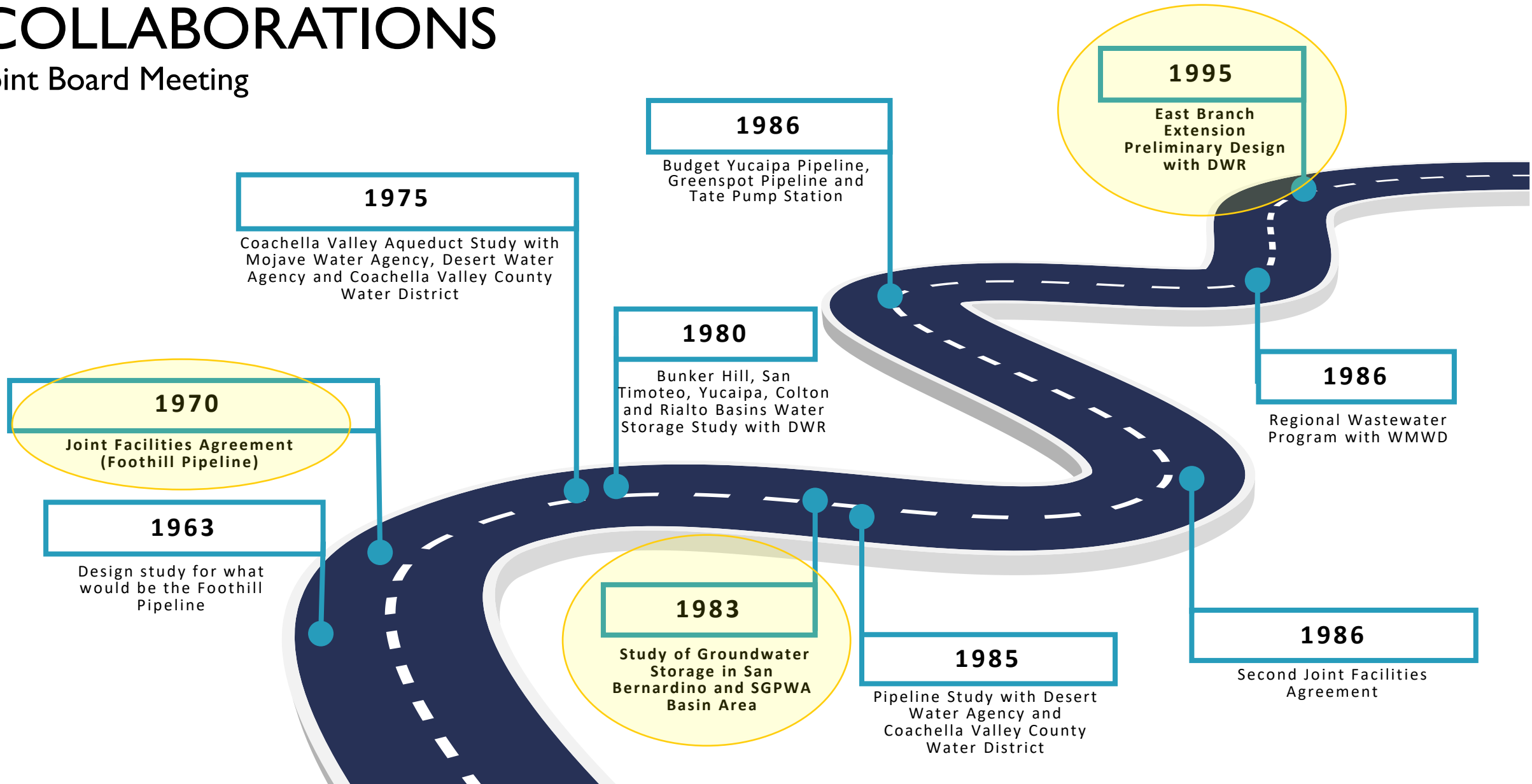
Heather Dyer, MS, MBA - CEO/ General Manager, San Bernardino Valley

Collaborations of San Geronio Pass Water Agency and San Bernardino Valley

SGPWA and San Bernardino Valley

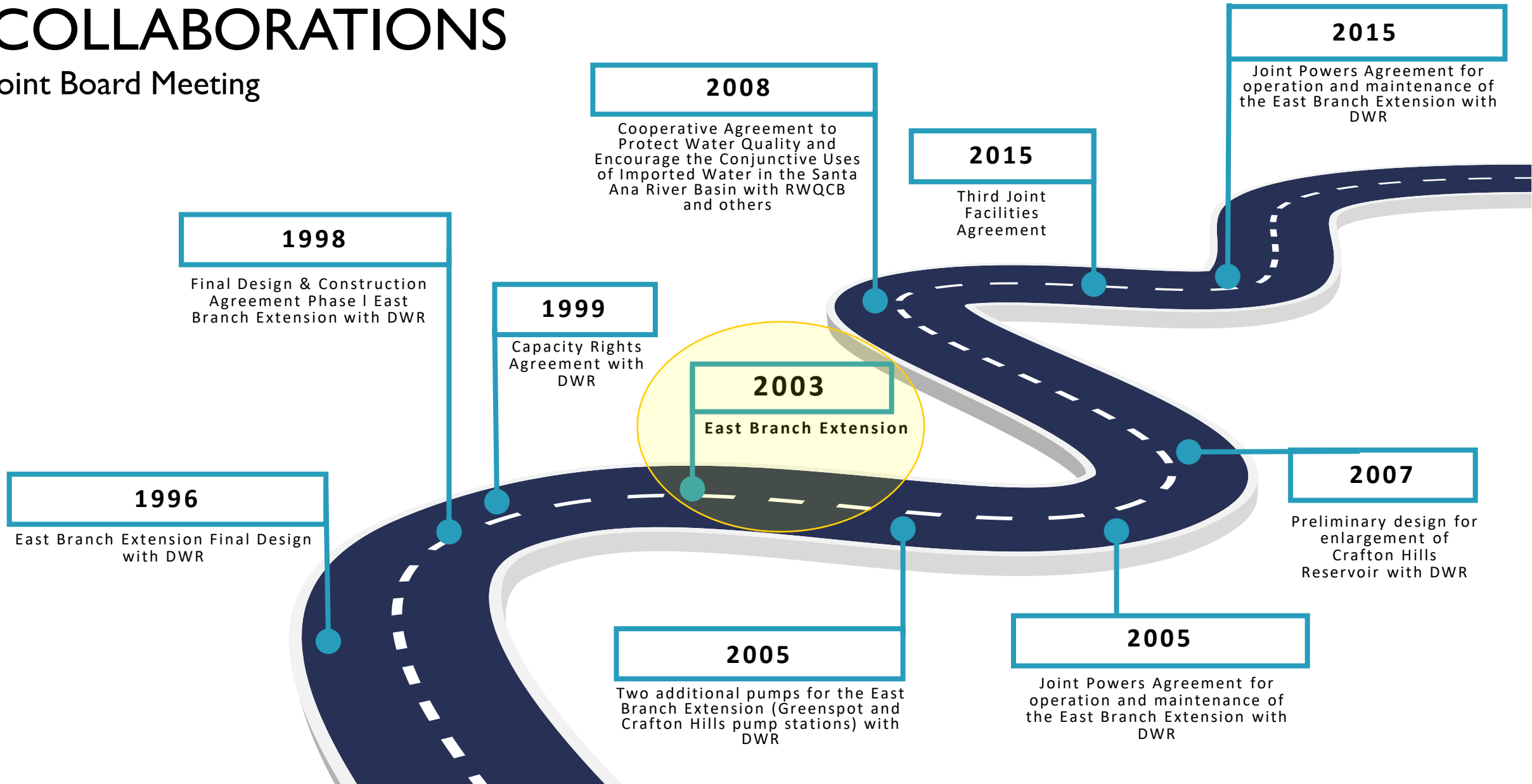
COLLABORATIONS

Joint Board Meeting



SGPWA and San Bernardino Valley COLLABORATIONS

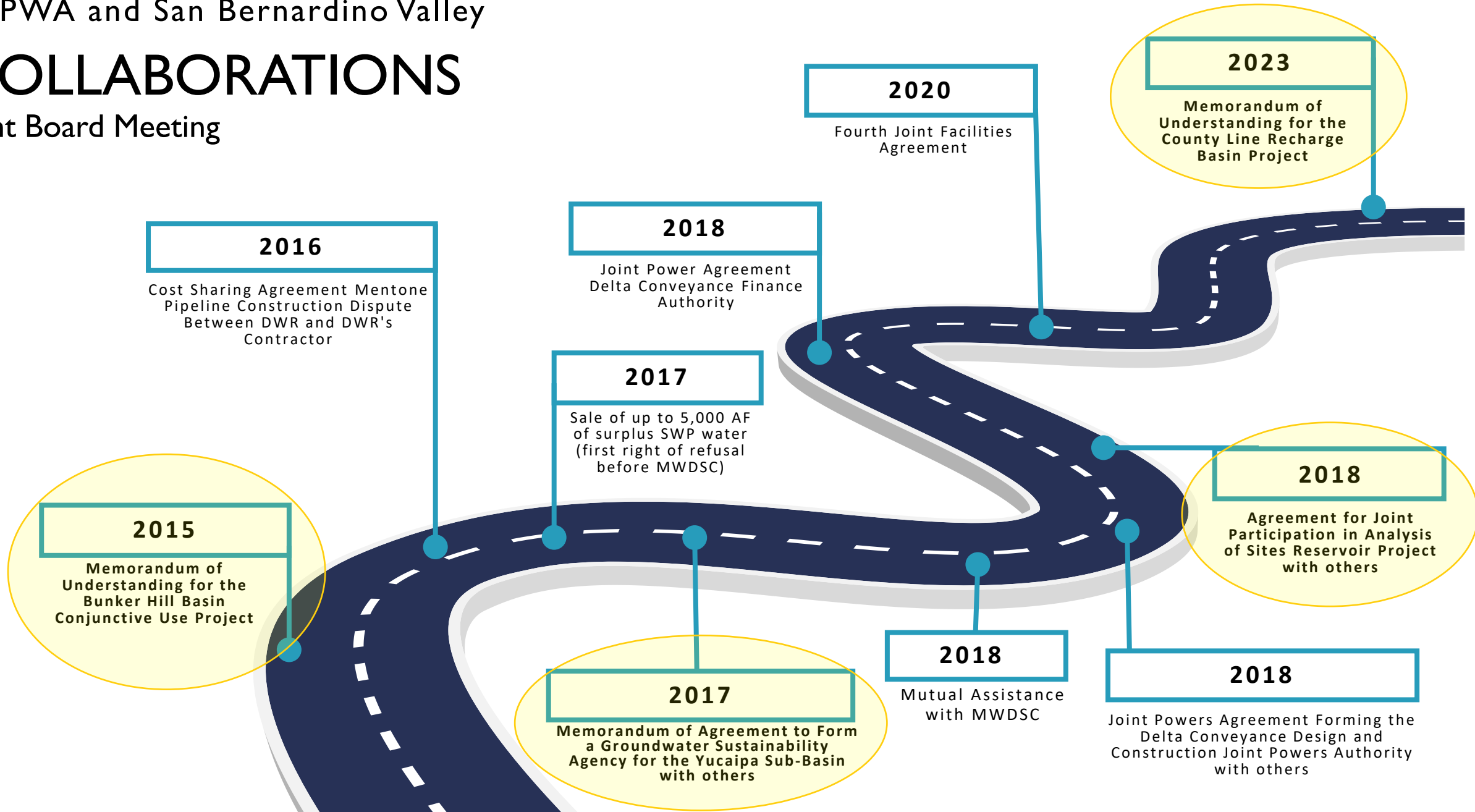
Joint Board Meeting



SGPWA and San Bernardino Valley

COLLABORATIONS

Joint Board Meeting



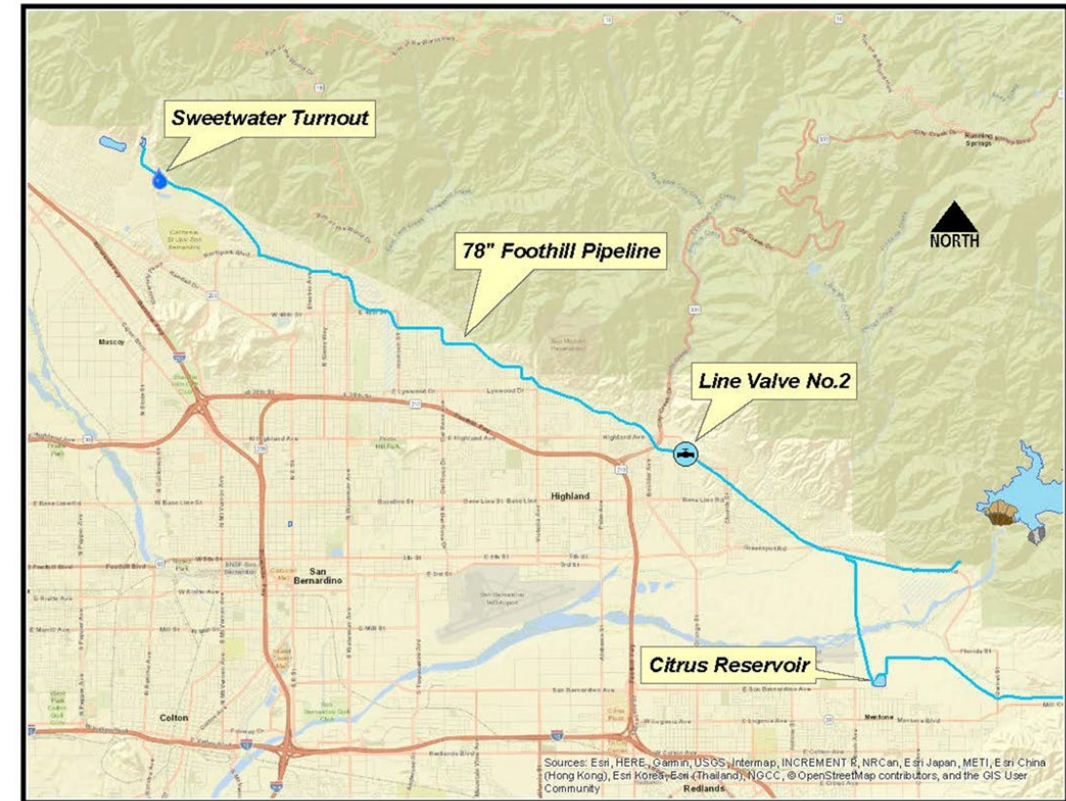
FOOTHILL PIPELINE EARTHTEC INJECTION SYSTEM

OVERVIEW

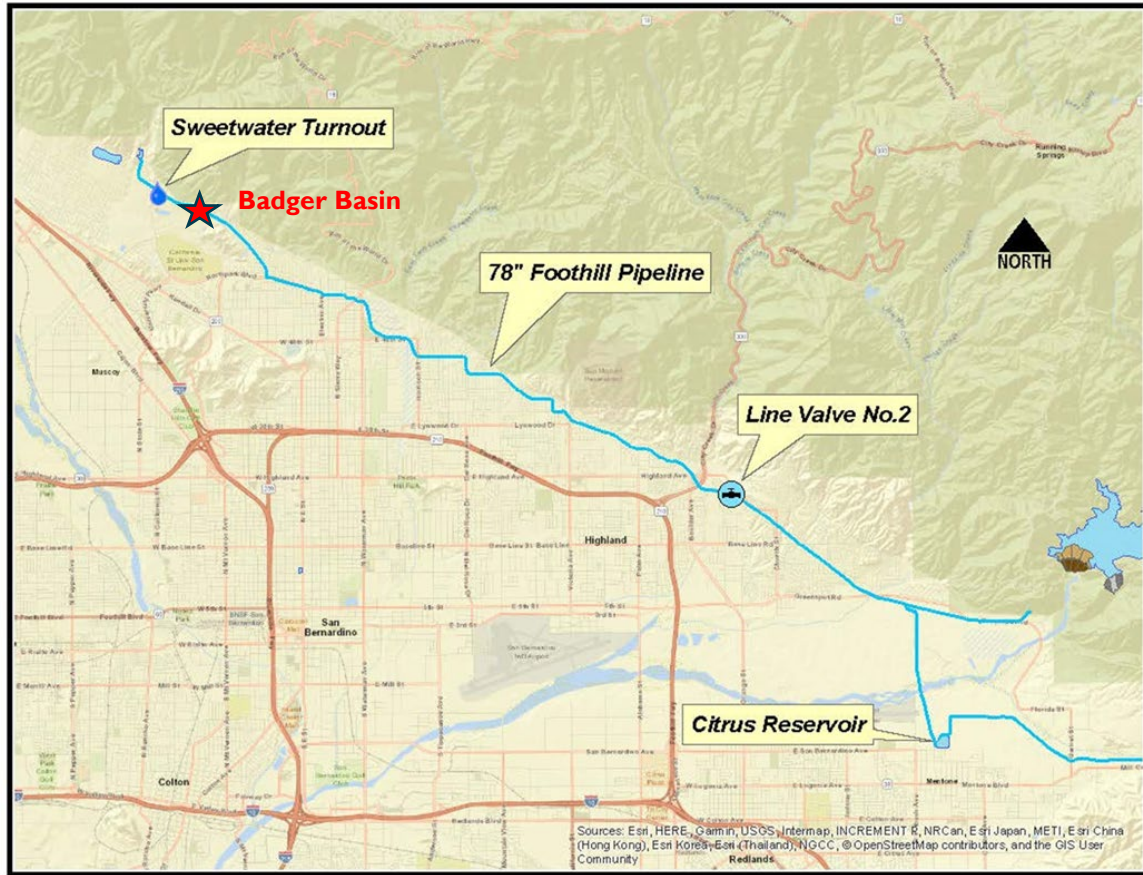
- ✓ Algae tends to reduce groundwater recharge rates and can result in the following:
 - ✓ Clogging
 - ✓ Increased pre-treatment costs in treatment plants
 - ✓ Taste and odor problems in drinking water
- ✓ Two injection systems installed on the Foothill Pipeline to help combat algae growth throughout the SWP delivery system

STATUS

- ✓ Successfully completed in 2019
- ✓ Injection stations have improved the SWP water quality throughout the system
- ✓ Effective tool for the benefit of both agencies



TREATMENT COMPARISON



Badger 10/4 9am



Badger 10/4 9am



Badger 10/5 @9am



Badger 10/5 @9am



Badger 10/9



Badger 10/9



COLLABORATION ON YUCAIPA BASIN

- SB Valley and Pass are the two regional agencies and State Water Contractors overlying the Yucaipa Basin
- Both agencies are active in the Yucaipa Sustainable Groundwater Management Agency, which they helped formed in 2017 with water providers in the Basin
- Groundwater Sustainability Plan for the Basin approved by DWR in January 2024; serves as a basin sustainability roadmap for the next 20 years

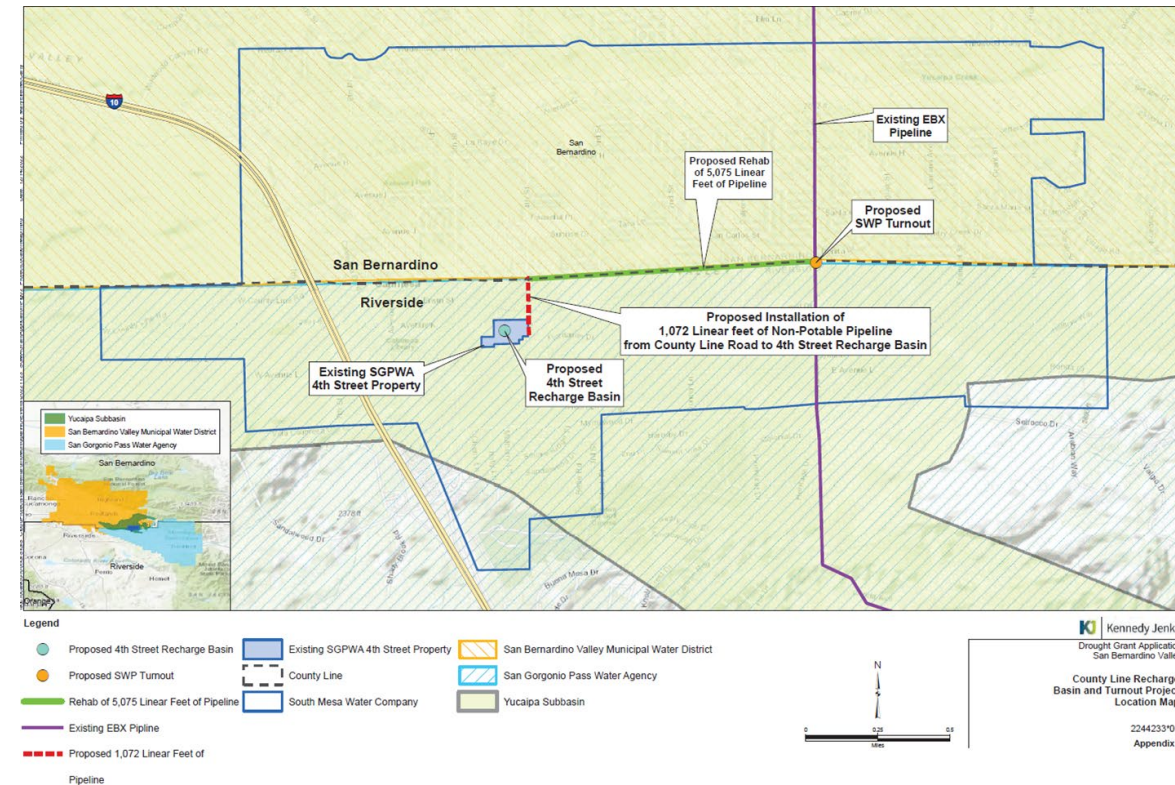
COUNTY LINE TURNOUT AND RECHARGE BASIN

OVERVIEW

- ✓ SB Valley and Pass both participate in Yucaipa GSA
- ✓ DWR has designated the Yucaipa Subbasin as a high-priority basin
- ✓ The Calimesa Management Area (CMA) is one of four management areas within the Yucaipa Subbasin
- ✓ Currently there are no managed aquifer recharge capabilities within CMA
- ✓ The CMA straddles SB Valley's and Pass service areas

PROGRESS UPDATE

- ✓ Both are working together collaboratively, along with South Mesa Water Company, to develop a SWP turnout, conveyance system, and recharge basin to ensure long term groundwater sustainability and reliability within the CMA.
- ✓ Estimated Project Completion: End of 2025



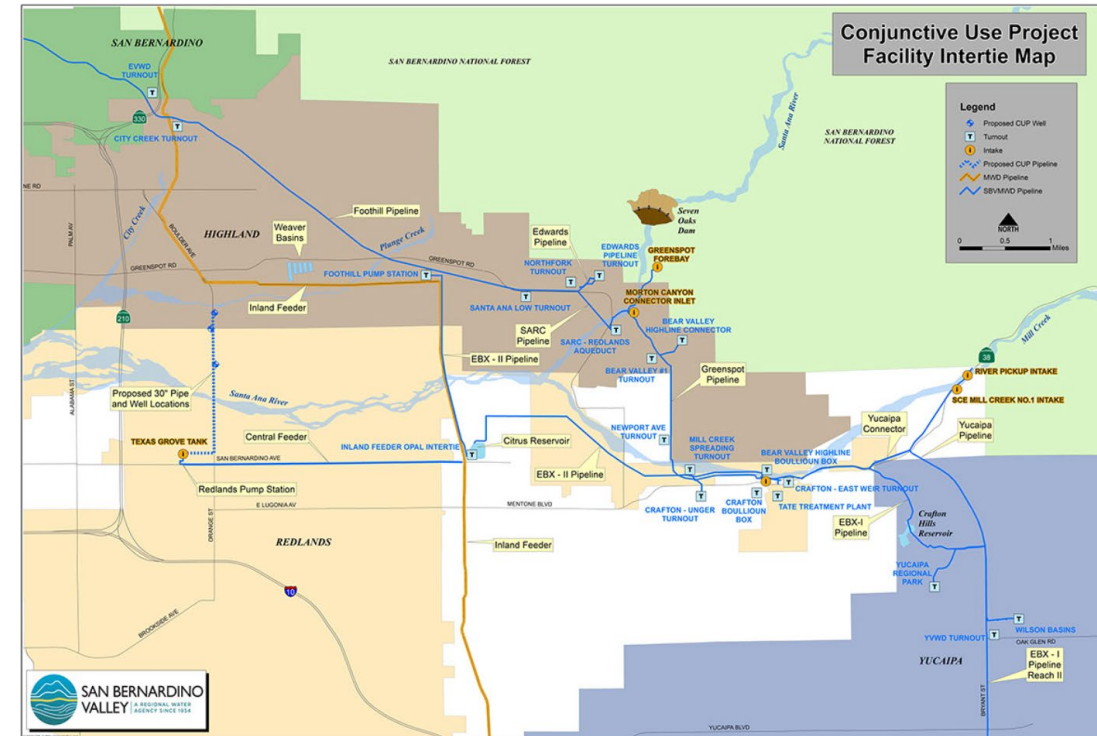
SANTA ANA RIVER AND BUNKER HILL CONJUNCTIVE USE PROGRAMS (SARCCUP & BHCUP)

Overview

- ✓ Operational flexibility for groundwater production
- ✓ Increased yield and water supply reliability
- ✓ Lower overall costs from regional project
- ✓ Mitigation for high groundwater

Goal

- ✓ Complete construction of up to three new wells by 2026 to fulfill grant obligations (*in the planning phase*)
- ✓ More efficient use of supplemental water when available



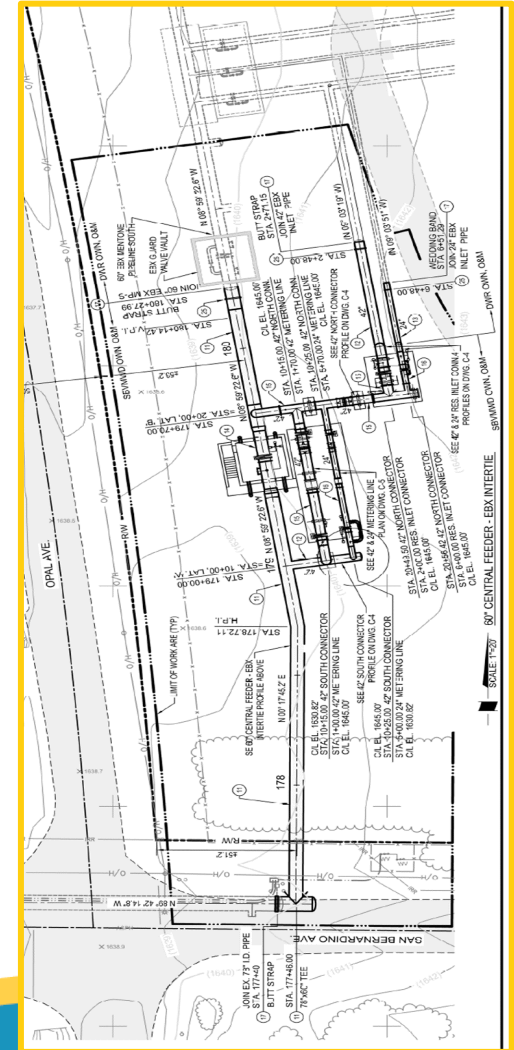
CENTRAL FEEDER – EAST BRANCH EXTENSION INTERTIE

OVERVIEW

- ✓ To connect Central Feeder pipeline to East Branch Extension to facilitate delivery of BHCUP water to YVWD and Pass
- ✓ The intertie would facilitate the bidirectional delivery of both State Water Project and Conjunctive Use water

PROGRESS UPDATE

- ✓ Design plans and specifications = 95% complete
- ✓ DWR Turn-in/Turnout Agreement = In-Progress
- ✓ Estimated completion date: Q1 2025



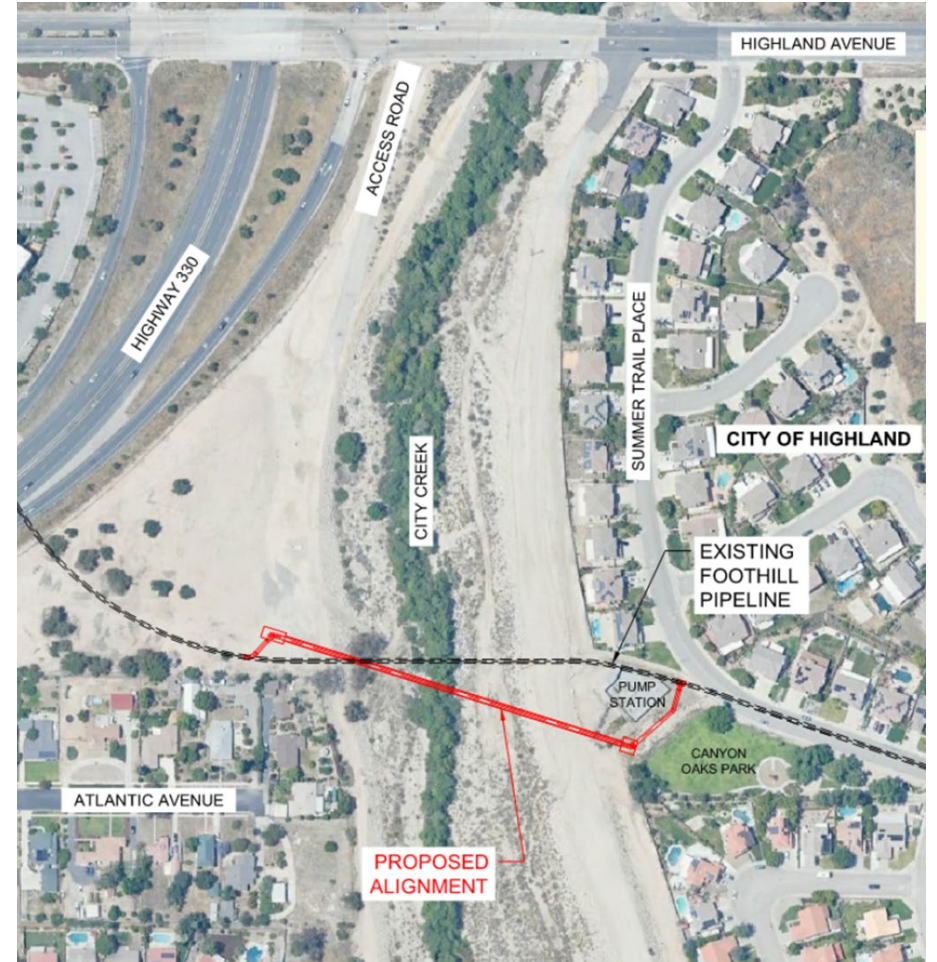
FOOTHILL PIPELINE CROSSING AT CITY CREEK

OVERVIEW

- ✓ 78-inch diameter Foothill Pipeline constructed in the 1970s
- ✓ Since 2006, actively working to protect the portion of the Foothill Pipeline that crosses City Creek from erosion and head-cutting
- ✓ Feasibility study completed in 2023. Recommendation is to tunnel under City Creek

PROGRESS UPDATE

- ✓ Bid plans and specifications are estimated to be complete by September 2024
- ✓ Construction is estimated to be complete by the end of 2025



A scenic landscape featuring a range of mountains under a warm, golden sunset sky. The foreground shows a forested hillside with some trees in autumn colors. The word "Adjourn" is written in a large, bold, blue font across the middle of the image. In the lower right, there are several decorative, wavy, grey lines.

Adjourn