

Water Conditions Update



Board of Directors Meeting
December 18, 2023



**Weather
&
Reservoir
Conditions**

**Forecasted
Hydrologic
Conditions**

**2023 SWP
Allocation &
Water
Portfolio**

**Local SWP
Deliveries &
Recharge**



Discussion

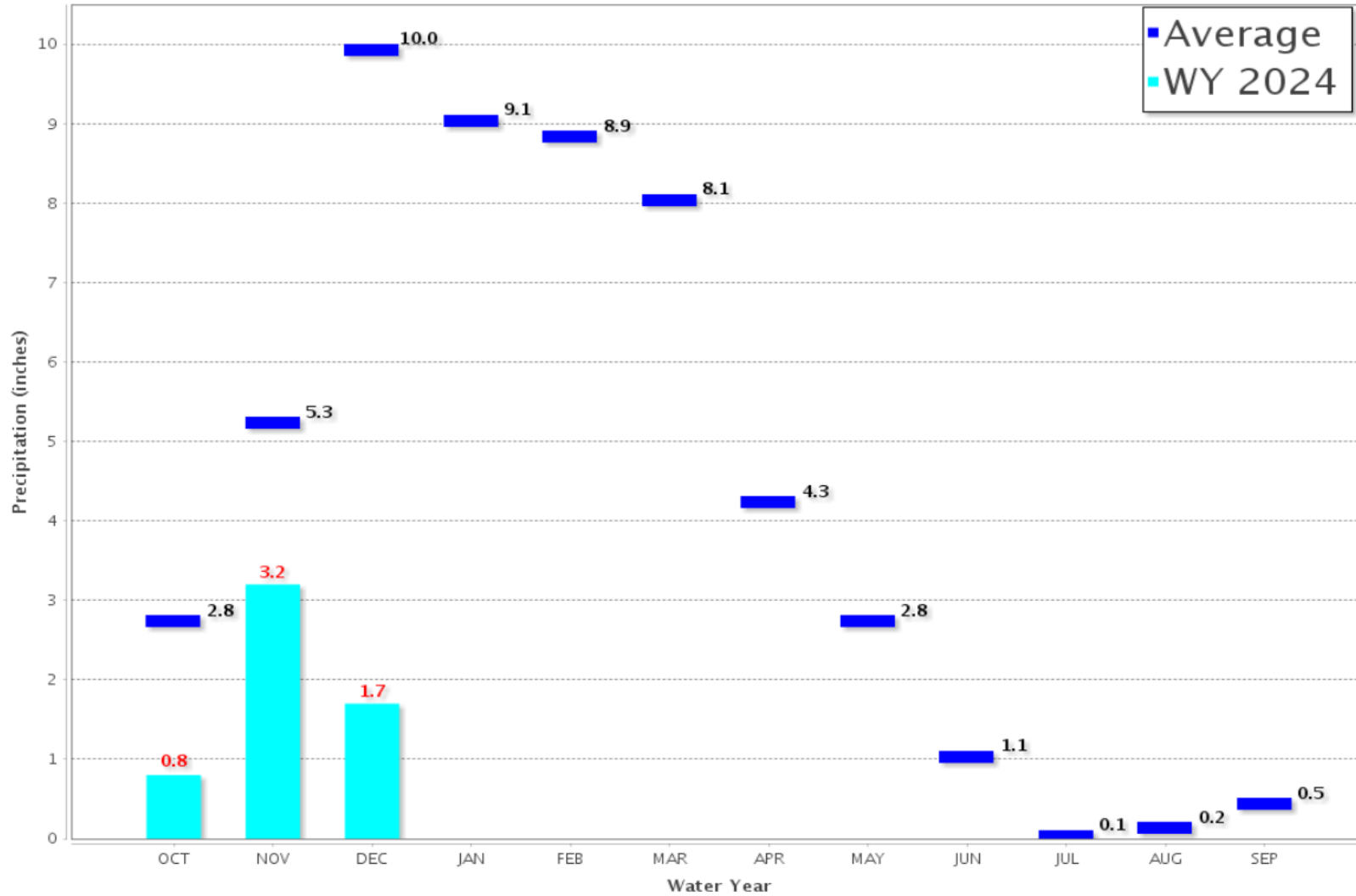




Northern Sierra 8-Station

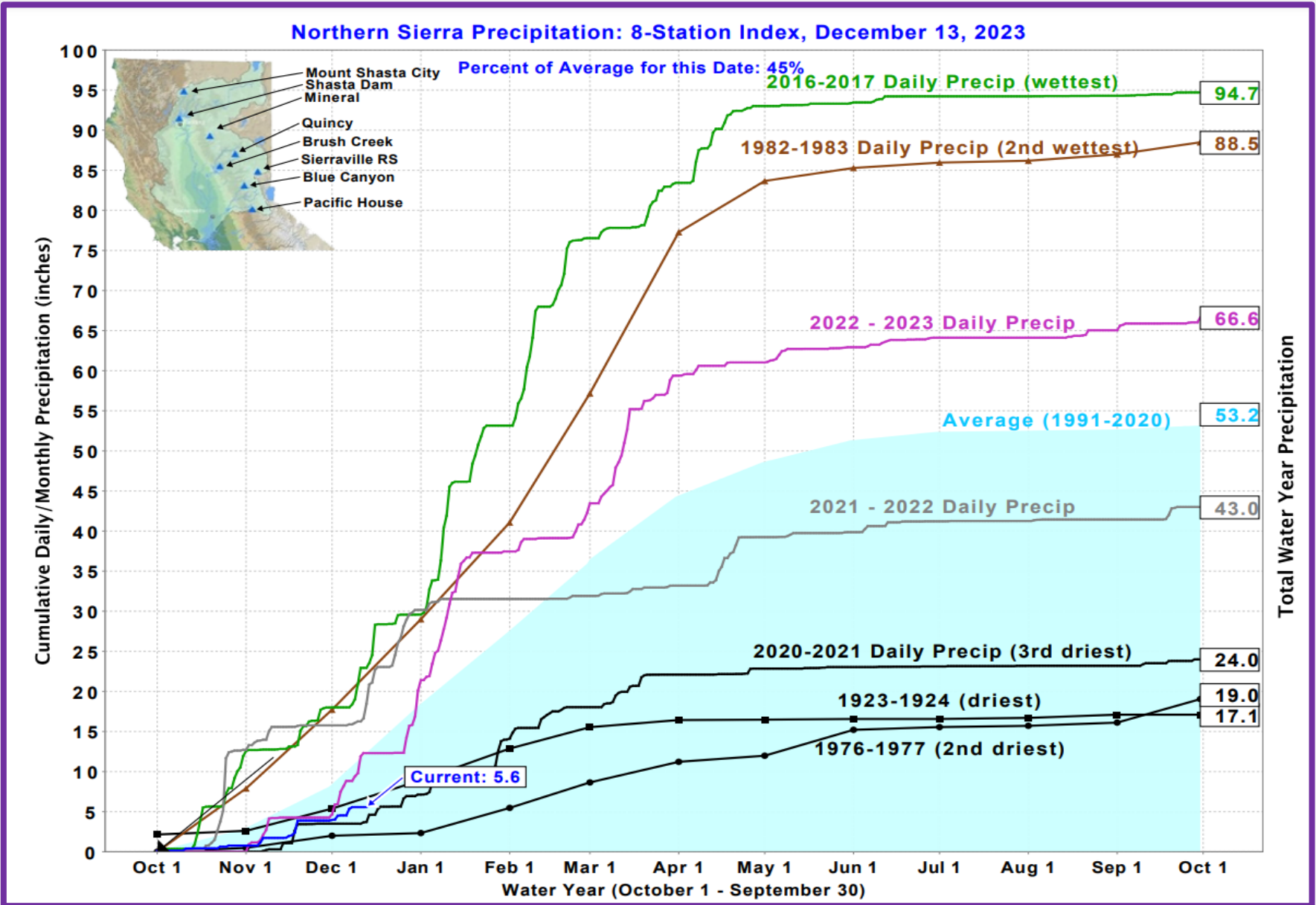
Precipitation Index for Water Year 2024 – Updated on December 13, 2023 10:36 AM

Note: Monthly totals may not add up to seasonal total because of rounding
Water Year Monthly totals are calculated based on Daily precipitation data from 12am to 12am PST



State Precipitation Stations – North Sierra





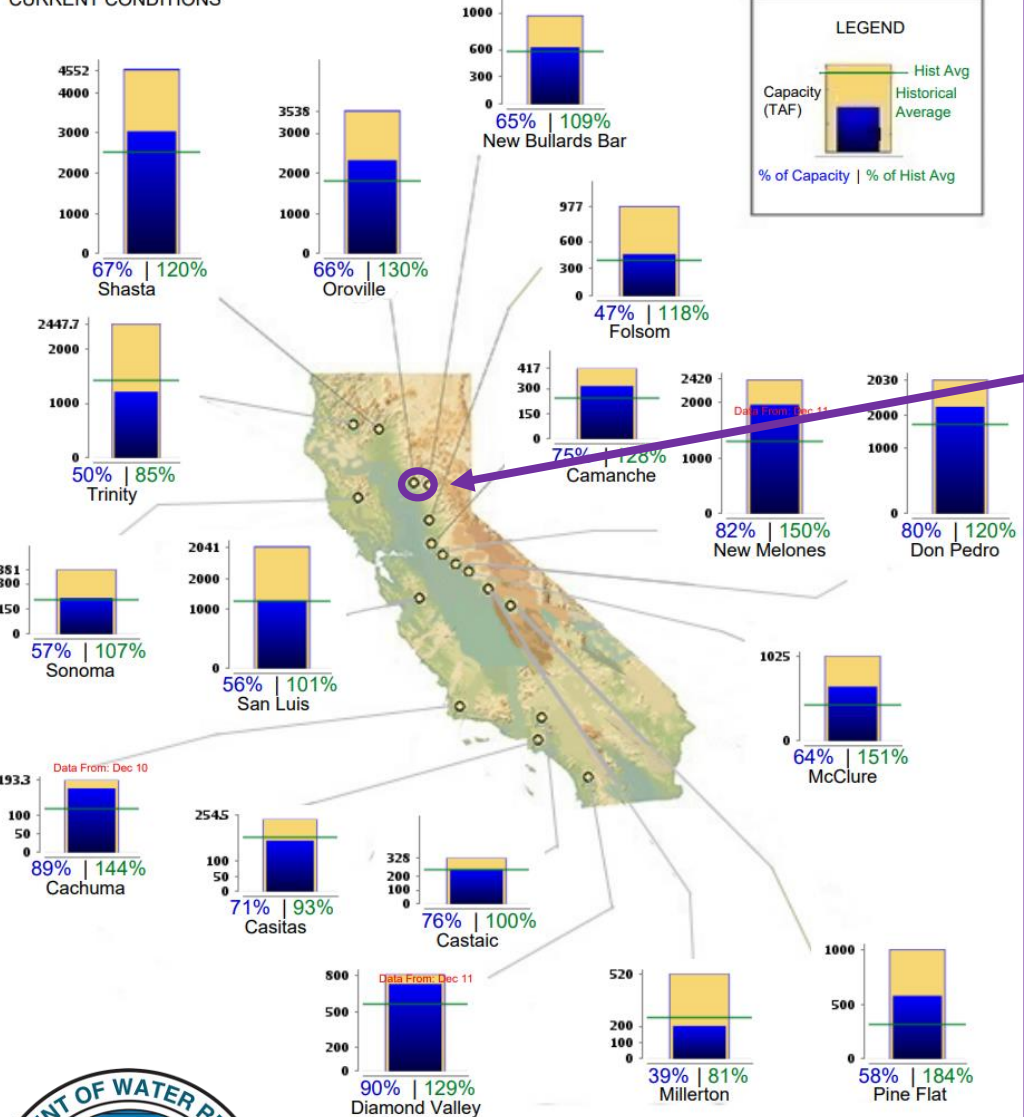
State Precipitation Stations – North Sierra



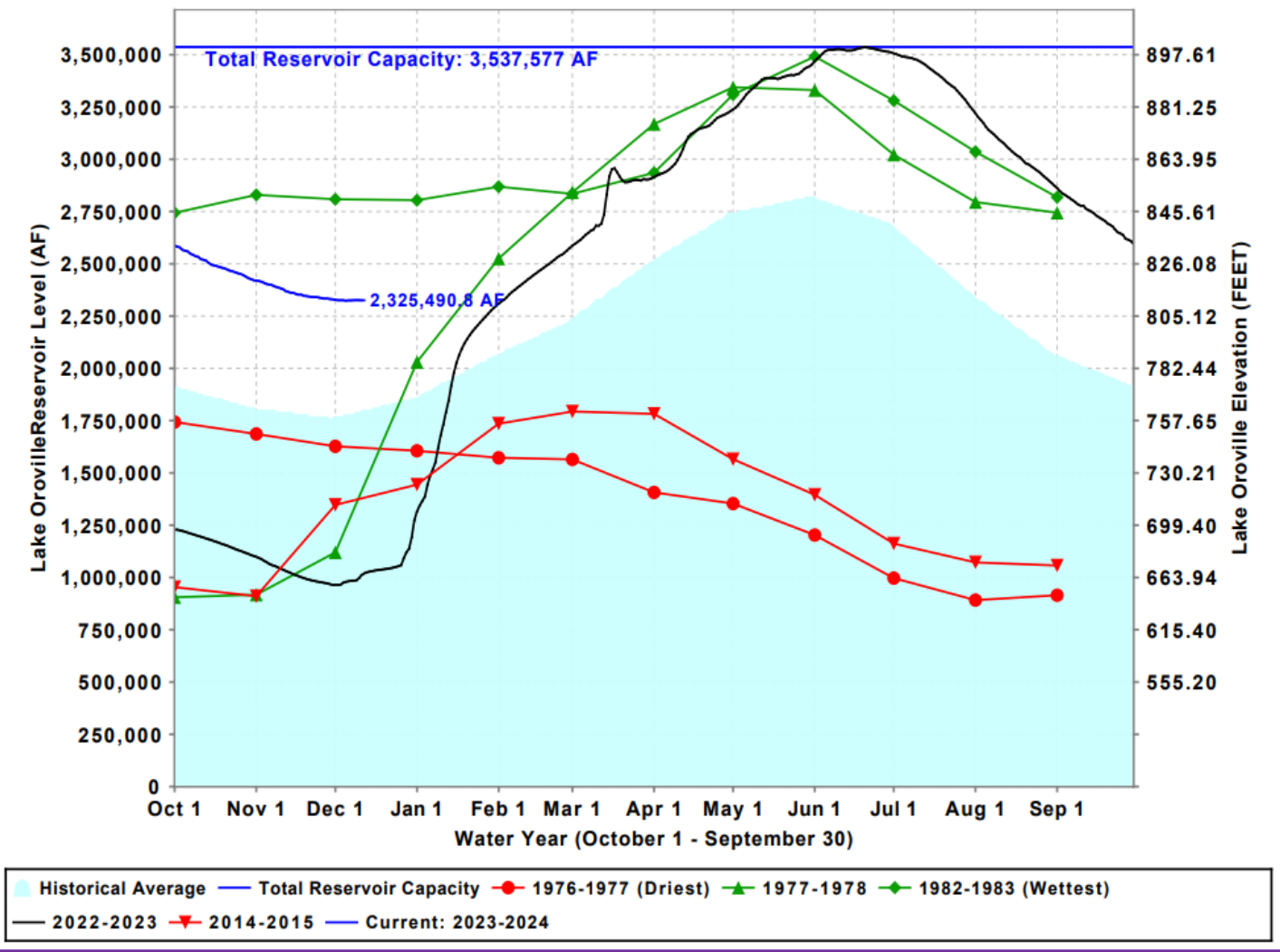
CALIFORNIA MAJOR WATER SUPPLY RESERVOIRS

CURRENT CONDITIONS

Midnight - December 12, 2023



Lake Oroville Levels: Various Past Water Years and Current Water Year, Ending At Midnight December 12, 2023



November - December Change in Storage: - 40,696 AF

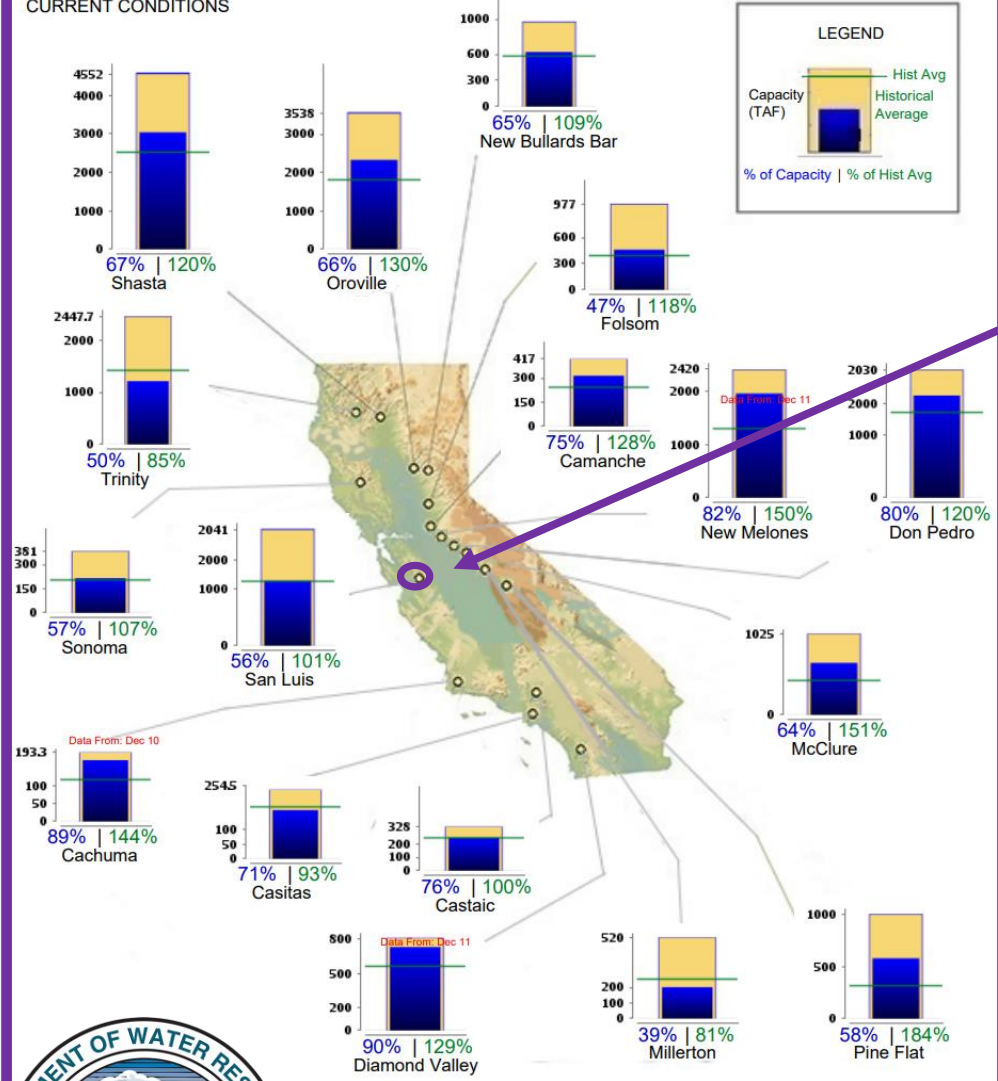
Lake Oroville Reservoir Levels



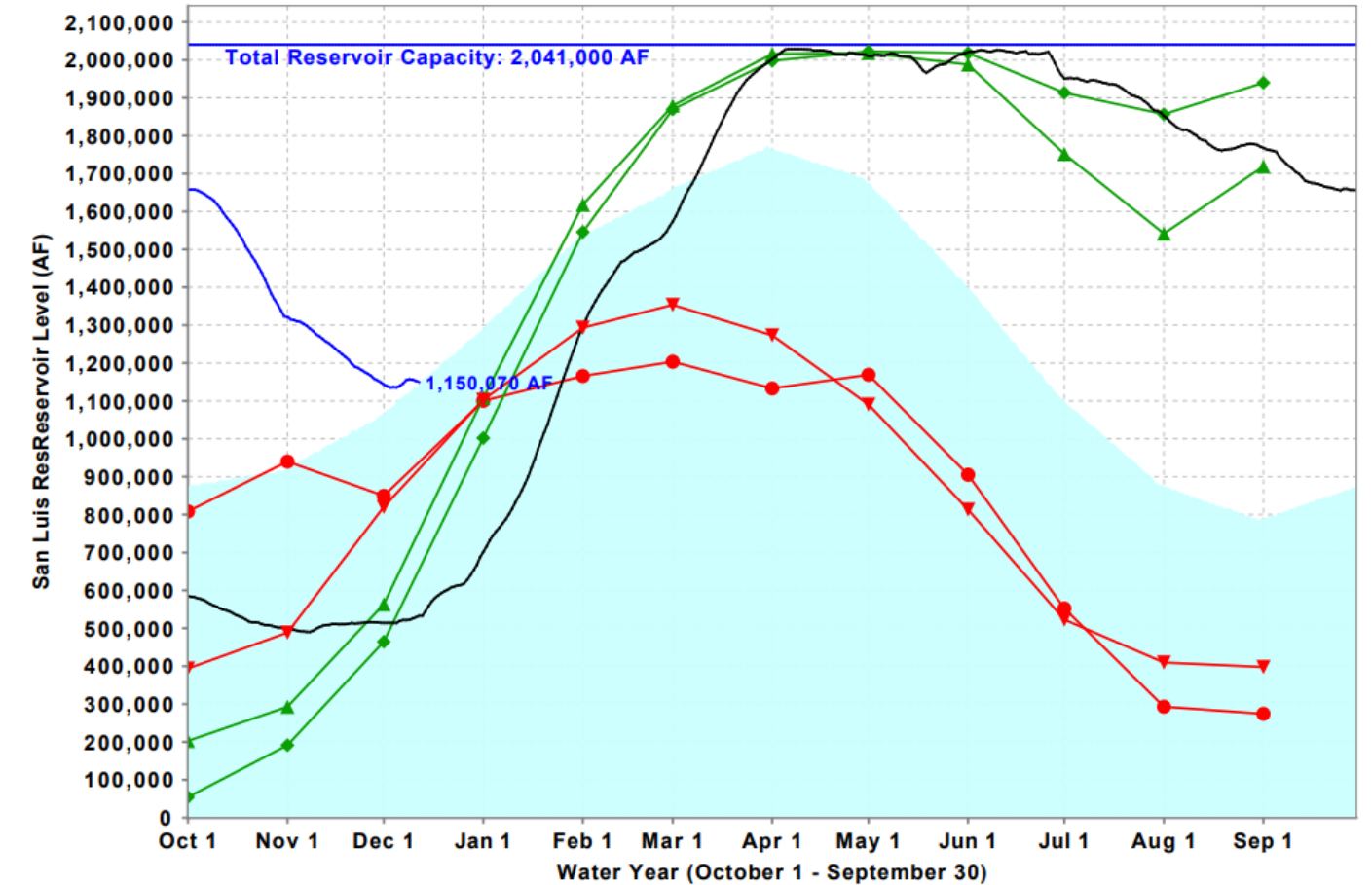
CALIFORNIA MAJOR WATER SUPPLY RESERVOIRS

CURRENT CONDITIONS

Midnight - December 12, 2023



San Luis Res Levels: Various Past Water Years and Current Water Year, Ending At Midnight December 12, 2023



■ Historical Average
 — Total Reservoir Capacity
 ● 1976-1977
 ▲ 1977-1978
 ◆ 1982-1983 (Wettest)
 — 2022-2023
 ▼ 2014-2015 (Driest)
 — Current: 2023-2024

November - December Change in Storage: - 106,653 AF

San Luis Reservoir Levels

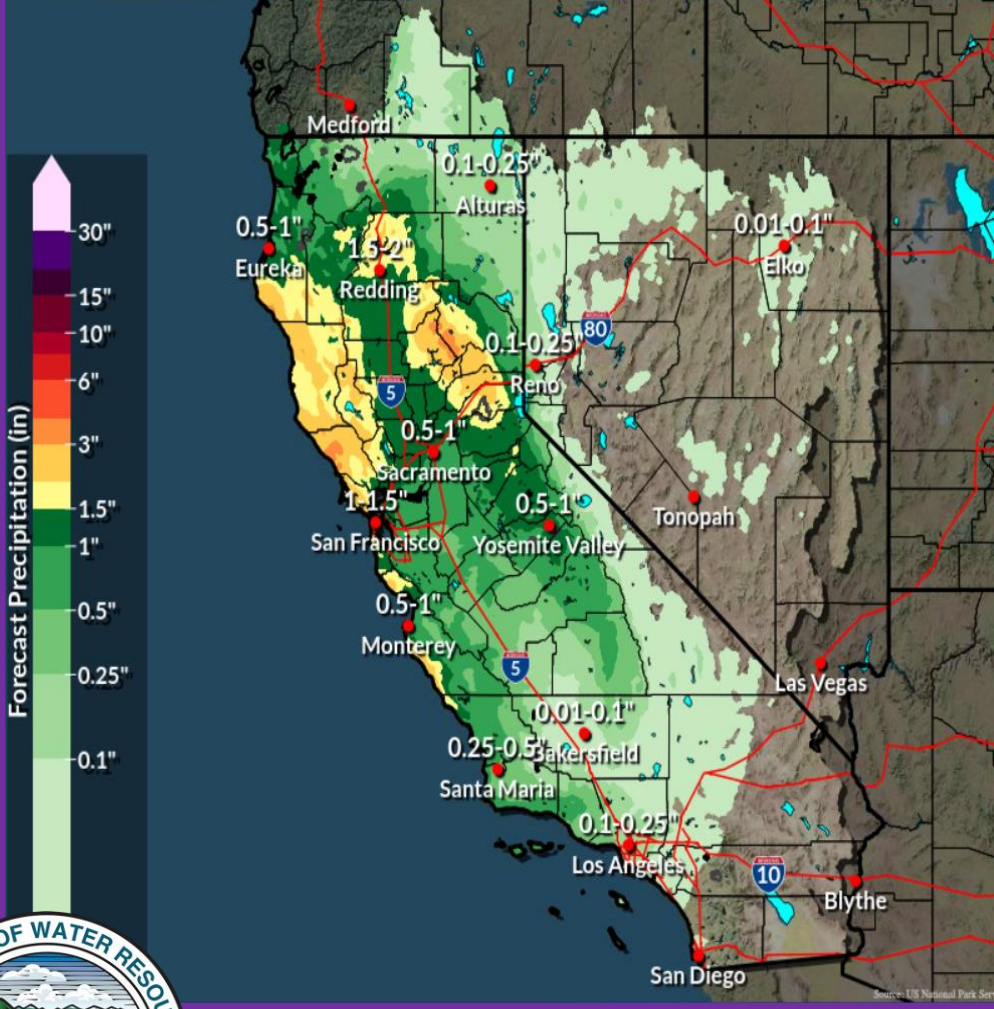


6-Day Forecast Precipitation

River Forecast Center
Sacramento, CA



Wed Dec 13, 2023 4 AM PST to Tue Dec 19, 2023 4 AM PST Issued Dec 13, 2023 7:05 AM PST

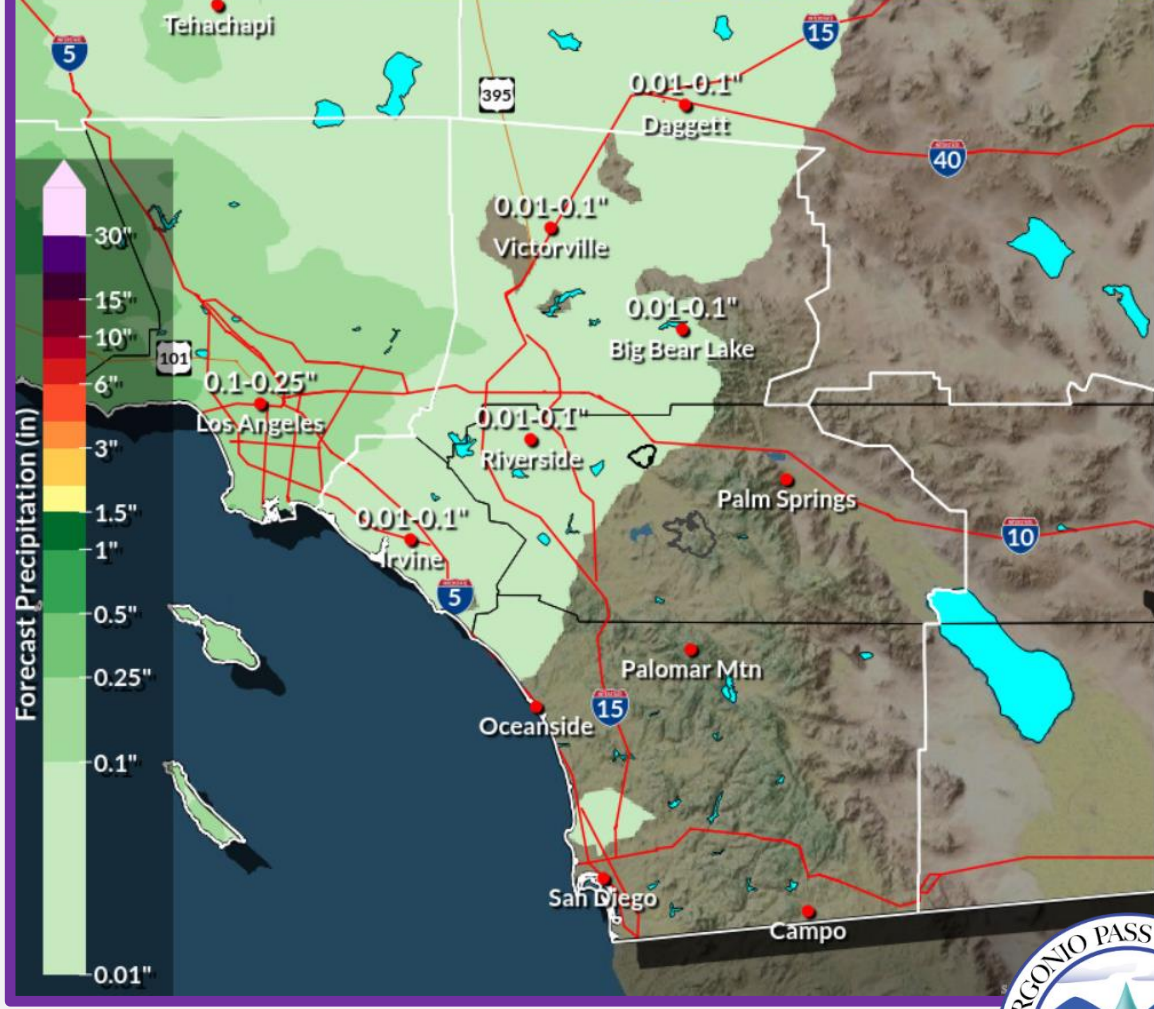


6-Day Forecast Precipitation

River Forecast Center
Sacramento, CA

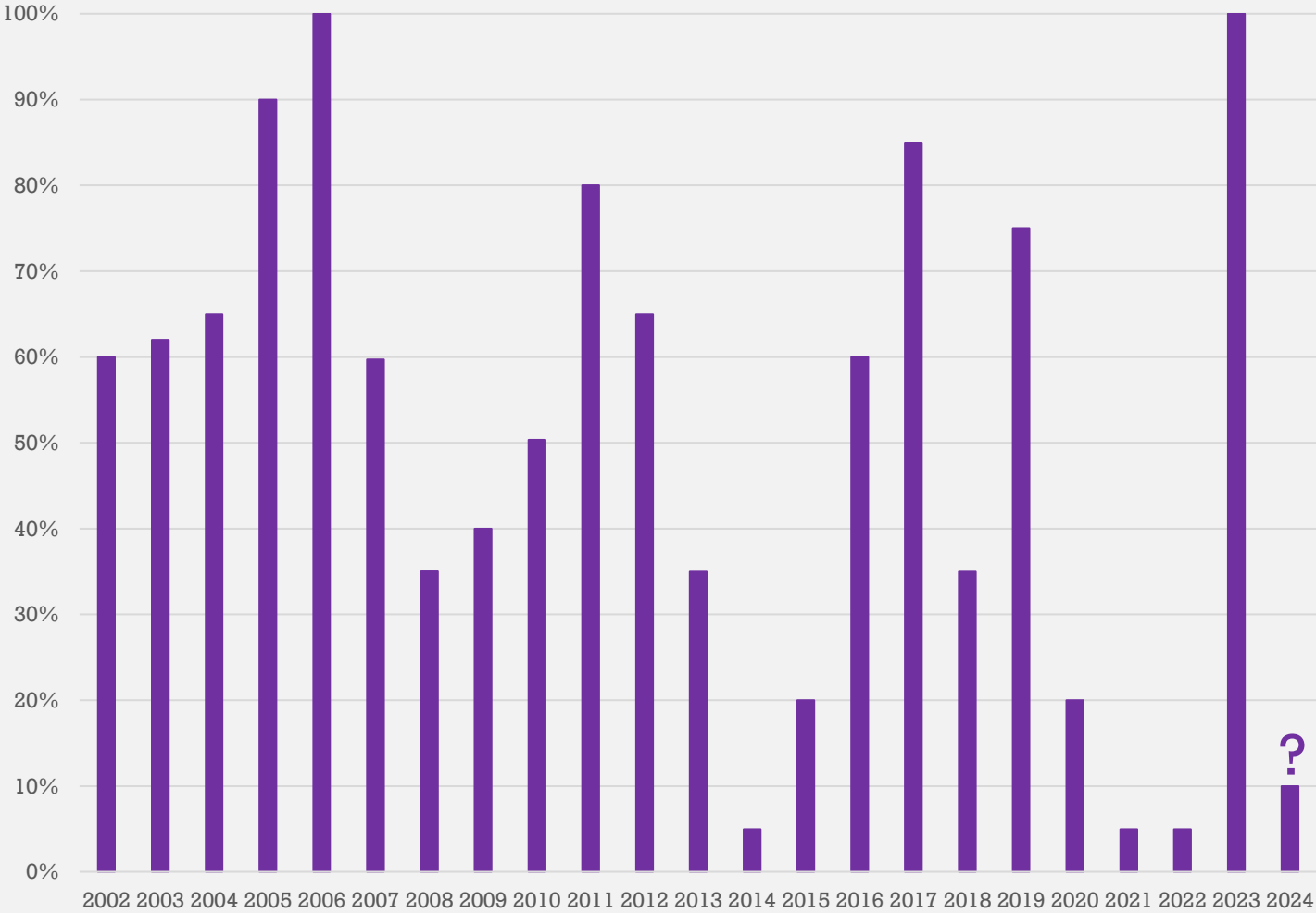


Wed Dec 13, 2023 4 AM PST to Tue Dec 19, 2023 4 AM PST Issued Dec 13, 2023 7:07 AM PST



Forecasted Hydrologic Conditions

Historic SWP Allocations

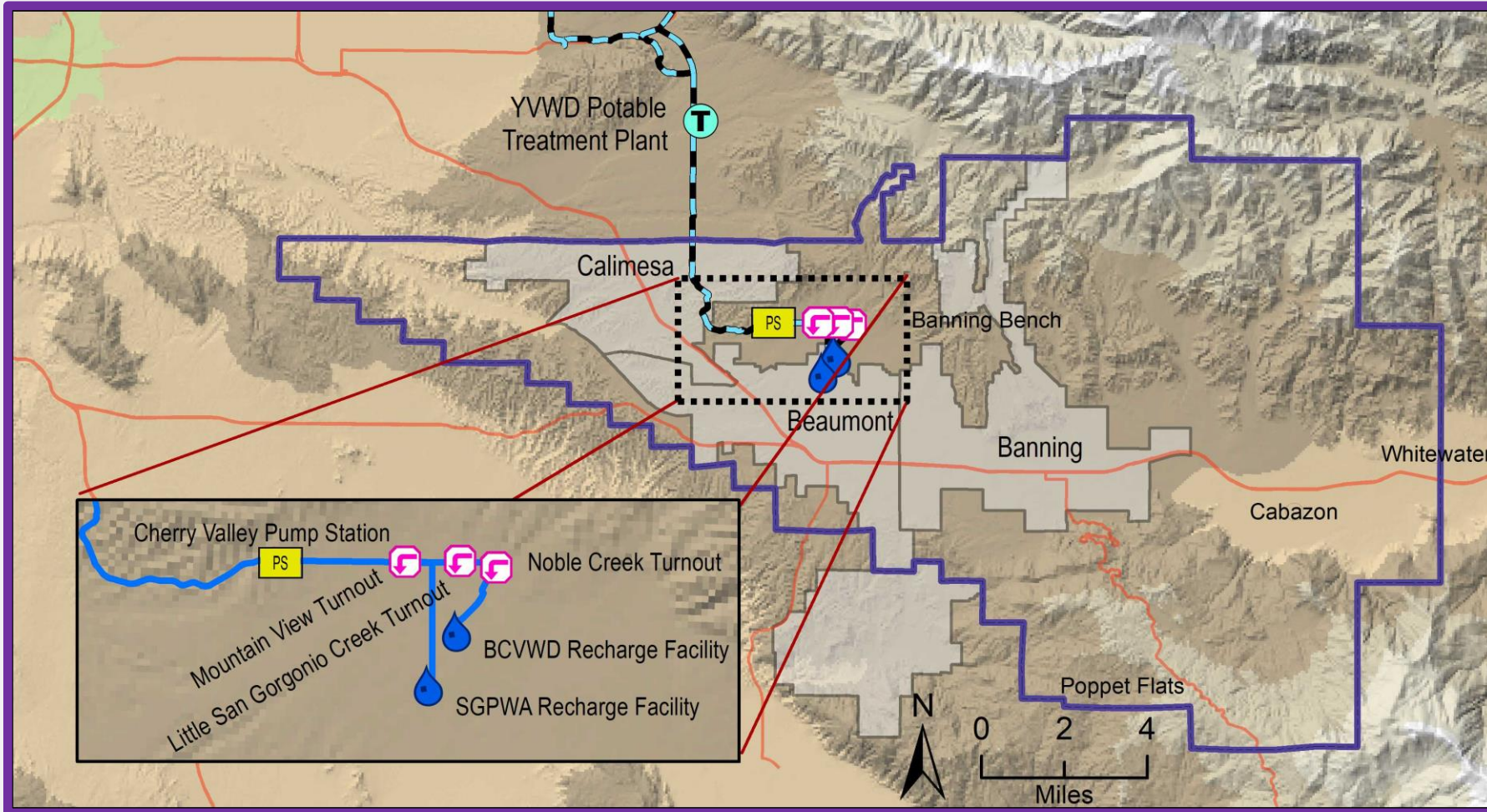


| SGPWA Portfolio @ 100% | | |
|-----------------------------|---------------|-----------|
| Source | TOTAL (AF) | Delivered |
| SWP - Carryover | 2,231 | ✓ |
| SWP – CCWA Return Water | 800 | ✓ |
| SWP – City of Yuba Transfer | 495 | ✓ |
| SWP – Article 21 | 5,075 | ✓ |
| SWP - Table A | 17,300 | ✓ |
| SWP - Ventura | 10,000 | ✓ |
| Subtotal SWP | 35,901 | |
| Non-SWP - Nickel Water | 1,700 | ✓ |
| Total | 37,601 | |

**Subject to Final Verification*



2023 SWP Allocation & Portfolio Update



| | Jan | Feb | Mar | Apr | May | Jun | Jul | Aug | Sept | Oct | Nov | Dec | Total |
|----------|-----|-------|-------|-------|-------|-------|-------|-------|-------|-------|-------|-------|--------|
| Recharge | 0 | 1,339 | 2,539 | 2,529 | 1,454 | 1,984 | 1,813 | 1,770 | 1,290 | 2,013 | 2,068 | 1,400 | 20,000 |
| Direct | 0 | 0 | 0 | 0 | 0 | 14 | 56 | 10 | 0 | 0 | 0 | 0 | 80 |

*Estimated
*From Local Storage



Local Deliveries 2023 (acre-feet)

Subject to Final Verification





Brookside East Recharge Facility



BCVWD Recharge Facilities



December Recharge Activities

