

Water Conditions Update



Board of Directors Meeting
November 20, 2023



**Weather
&
Reservoir
Conditions**

**Forecasted
Hydrologic
Conditions**

**2023 SWP
Allocation &
Water
Portfolio**

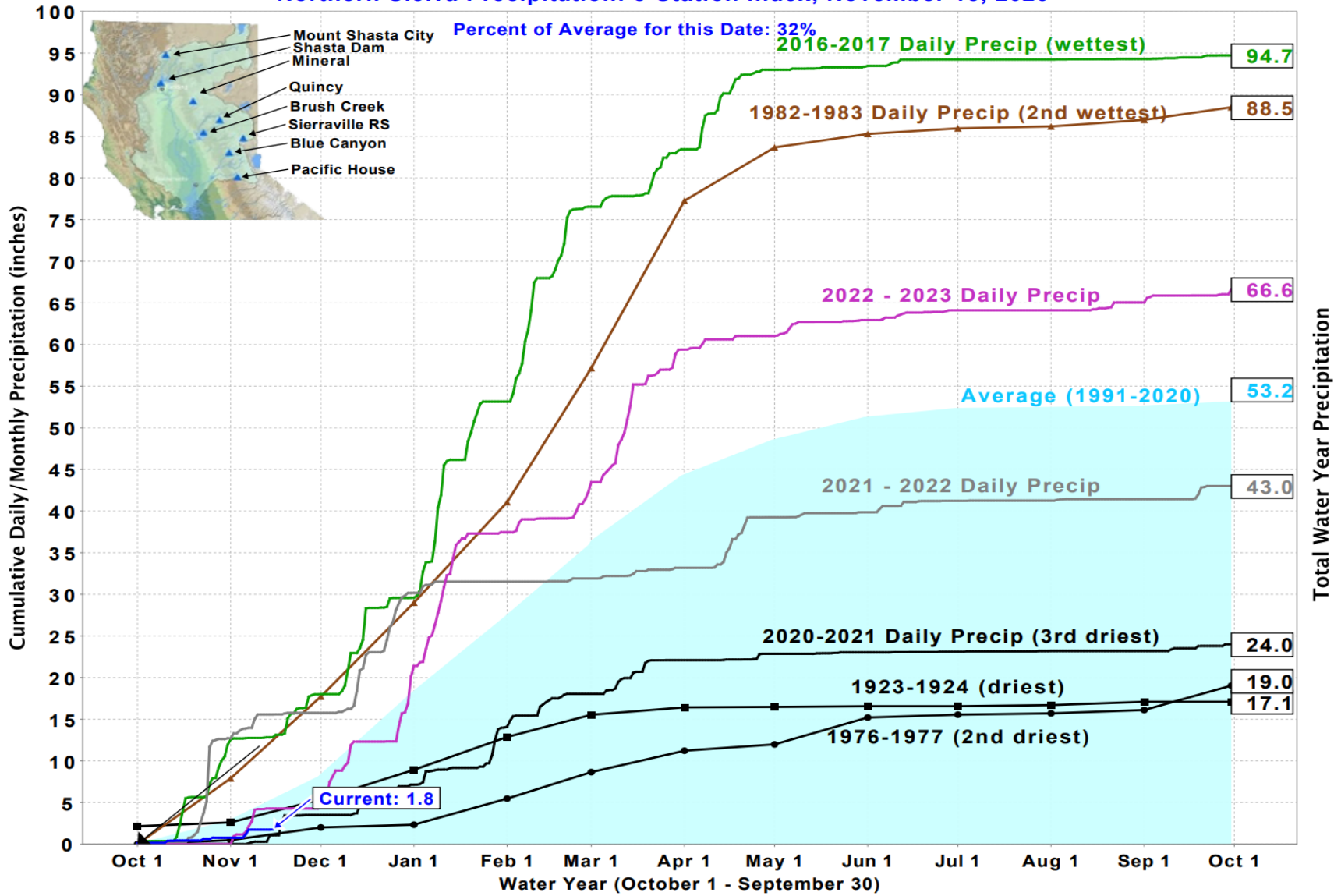
**SWP
Deliveries,
Recharge, &
Maintenance**



Discussion



Northern Sierra Precipitation: 8-Station Index, November 15, 2023

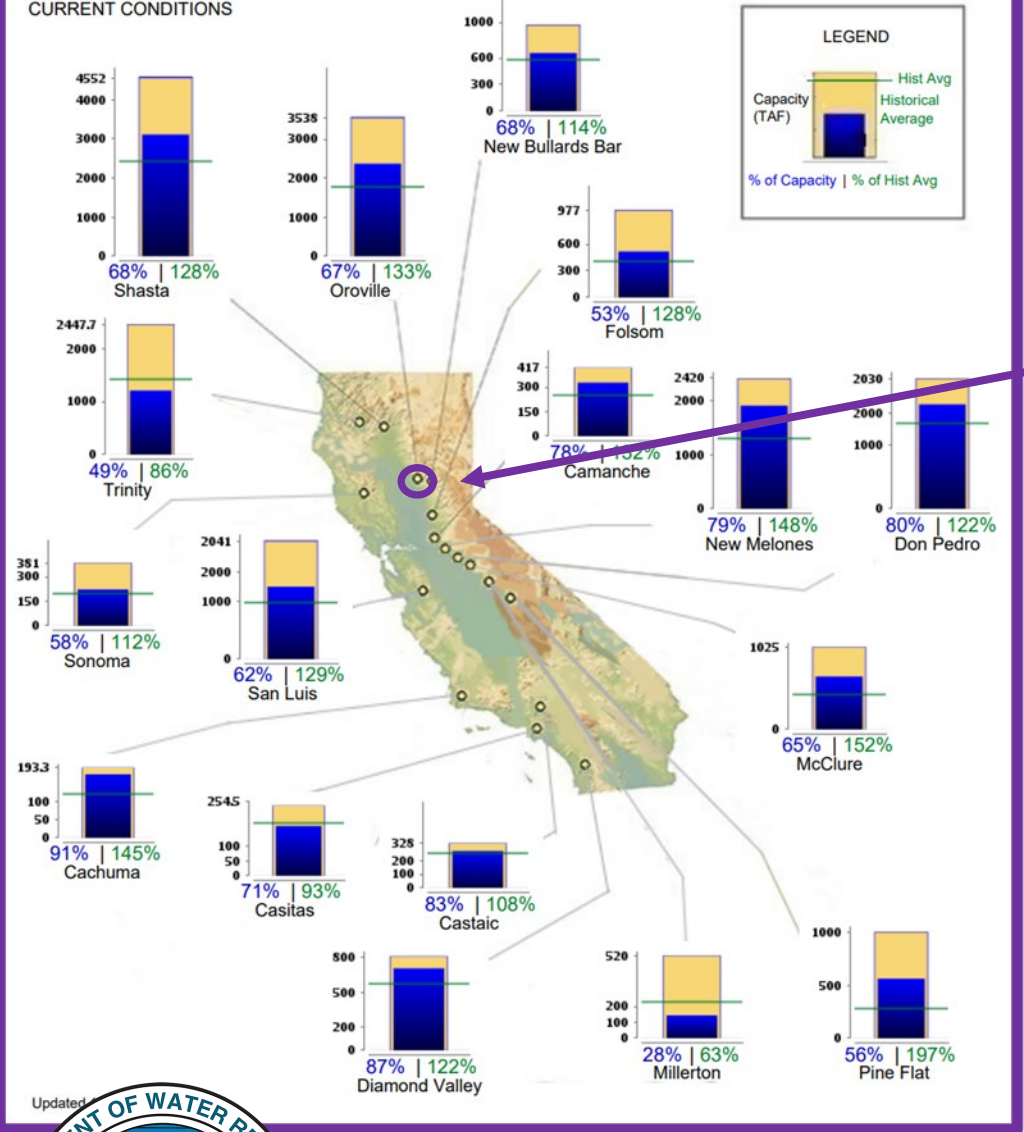


State Precipitation Stations – North Sierra

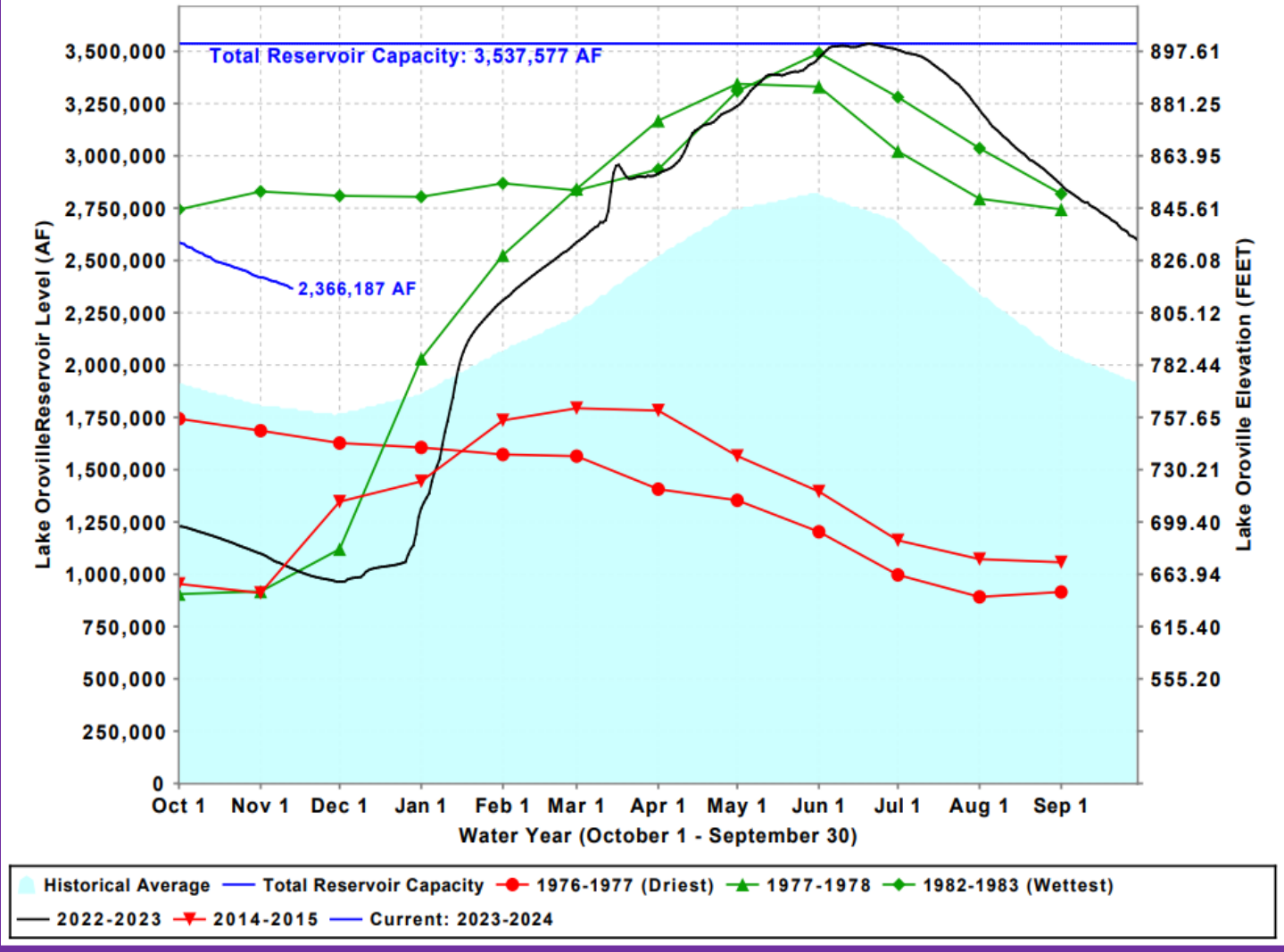
CALIFORNIA MAJOR WATER SUPPLY RESERVOIRS

CURRENT CONDITIONS

Midnight - November 13, 2023

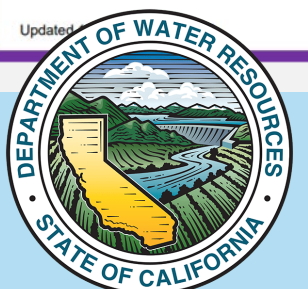


Lake Oroville Levels: Various Past Water Years and Current Water Year, Ending At Midnight November 13, 2023



October - November Change in Storage: - 170,138 AF

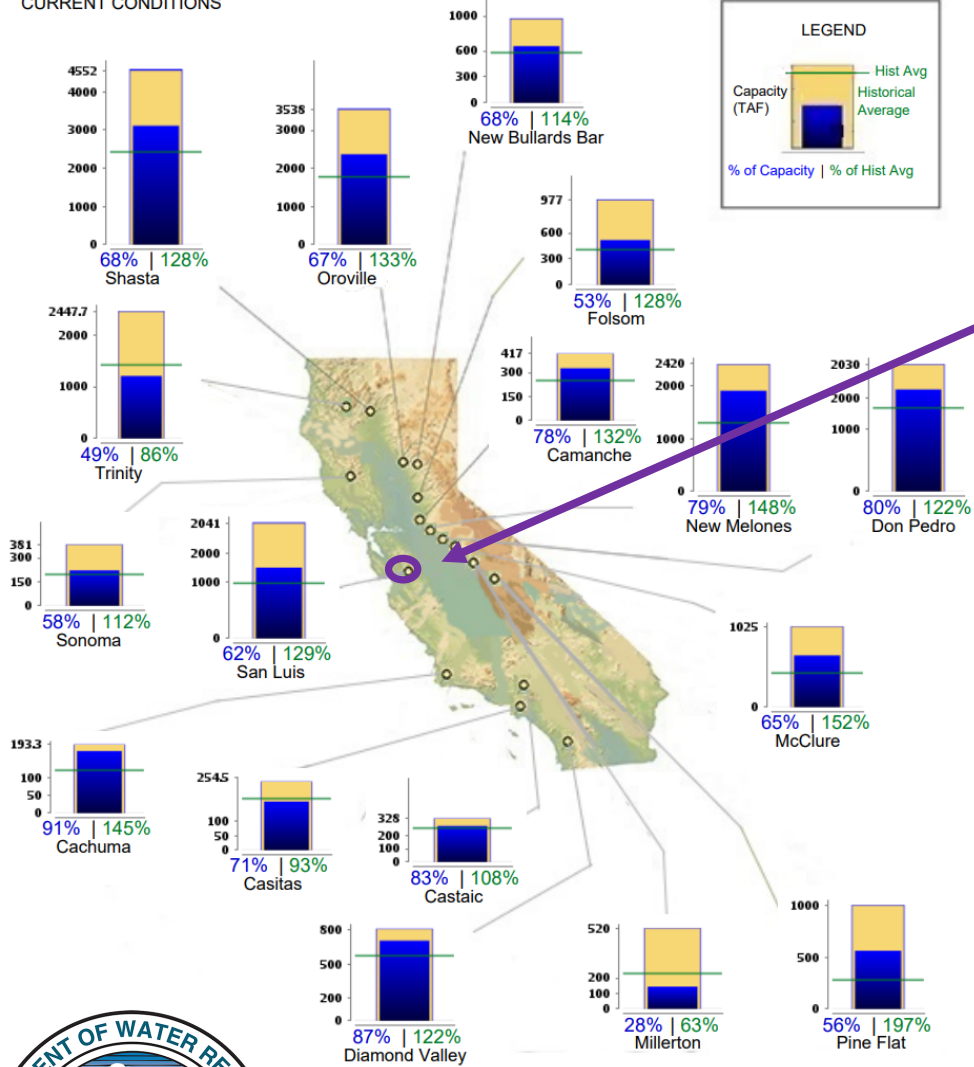
Lake Oroville Reservoir Levels



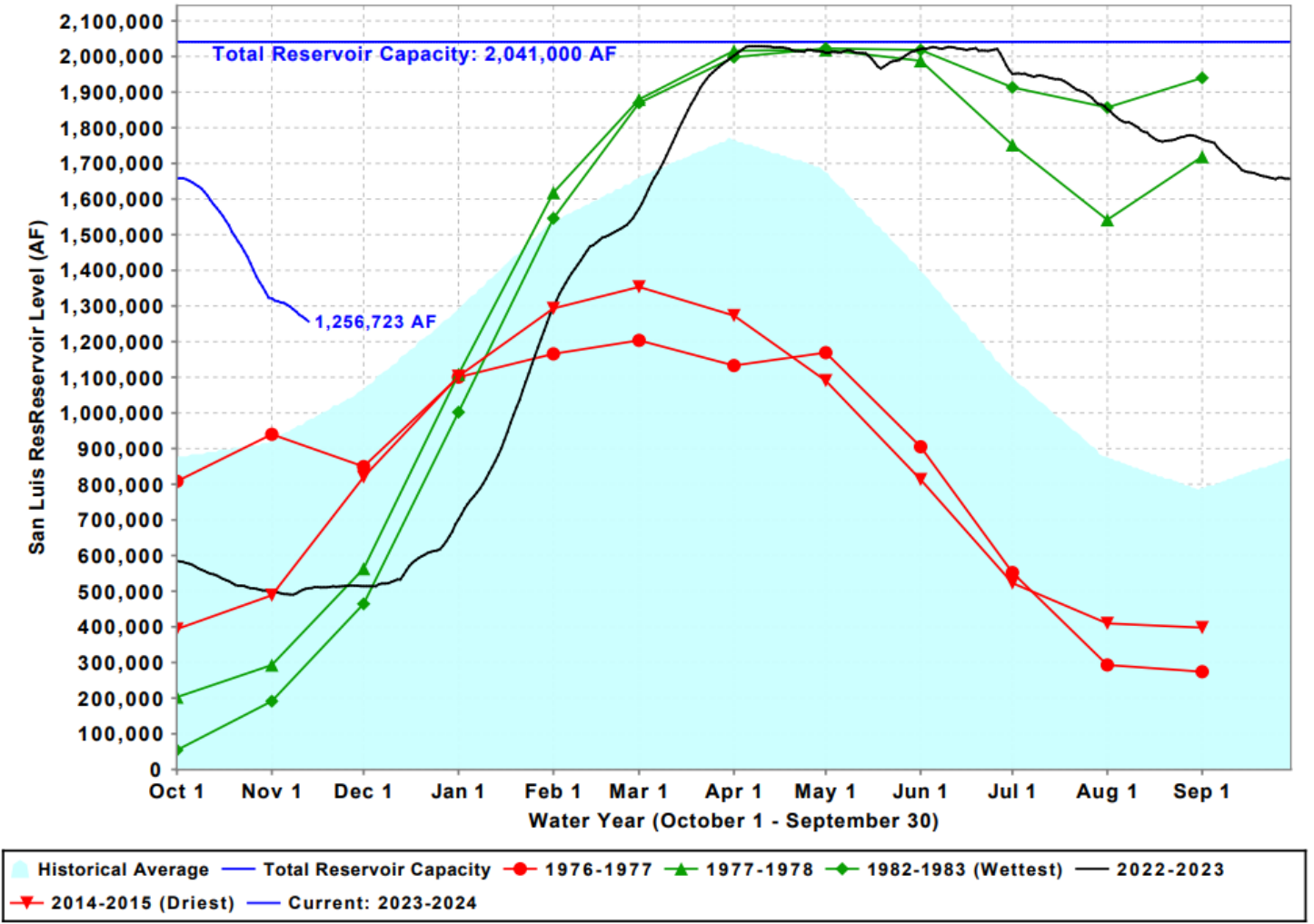
CALIFORNIA MAJOR WATER SUPPLY RESERVOIRS

CURRENT CONDITIONS

Midnight - November 13, 2023



San Luis Res Levels: Various Past Water Years and Current Water Year, Ending At Midnight November 13, 2023



October – November Change in Storage: - 372,692 AF

San Luis Reservoir Levels

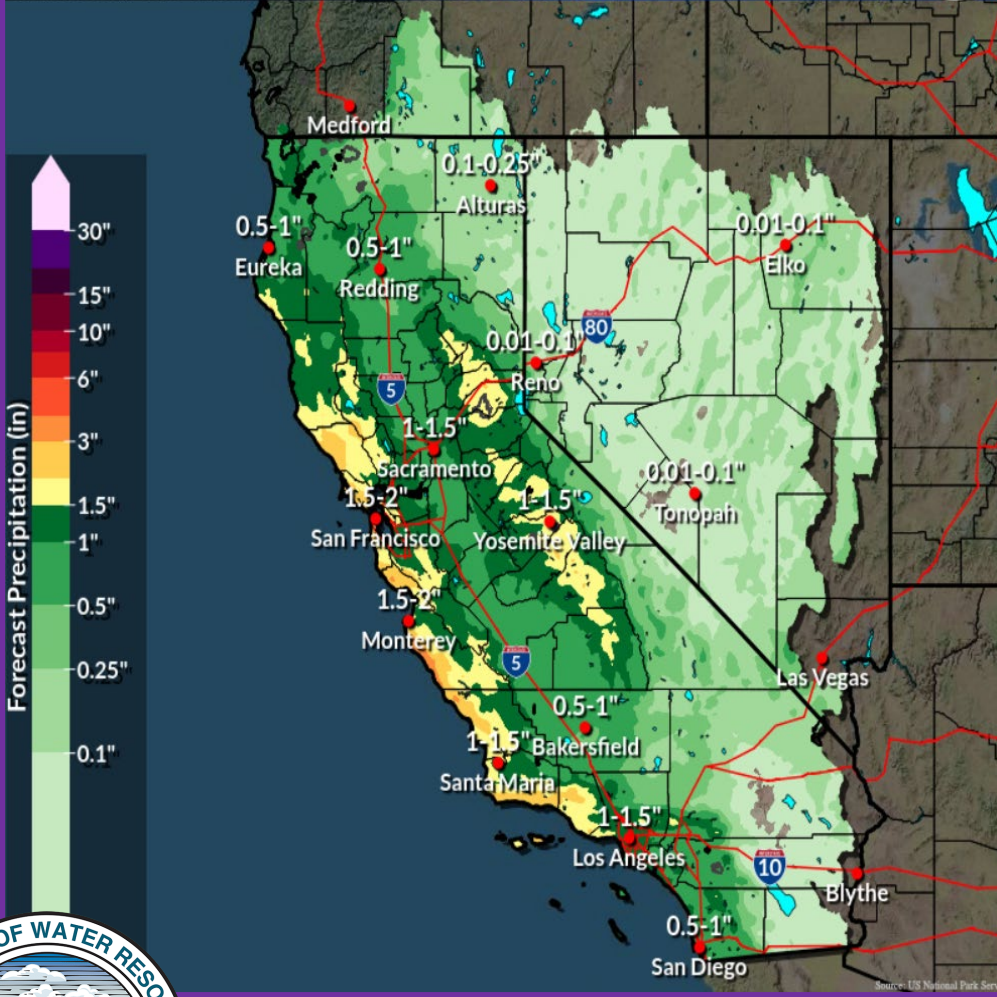


6-Day Forecast Precipitation

River Forecast Center
Sacramento, CA



Tue Nov 14, 2023 4 AM PST to Mon Nov 20, 2023 4 AM PST Issued Nov 14, 2023 1:18 PM PST

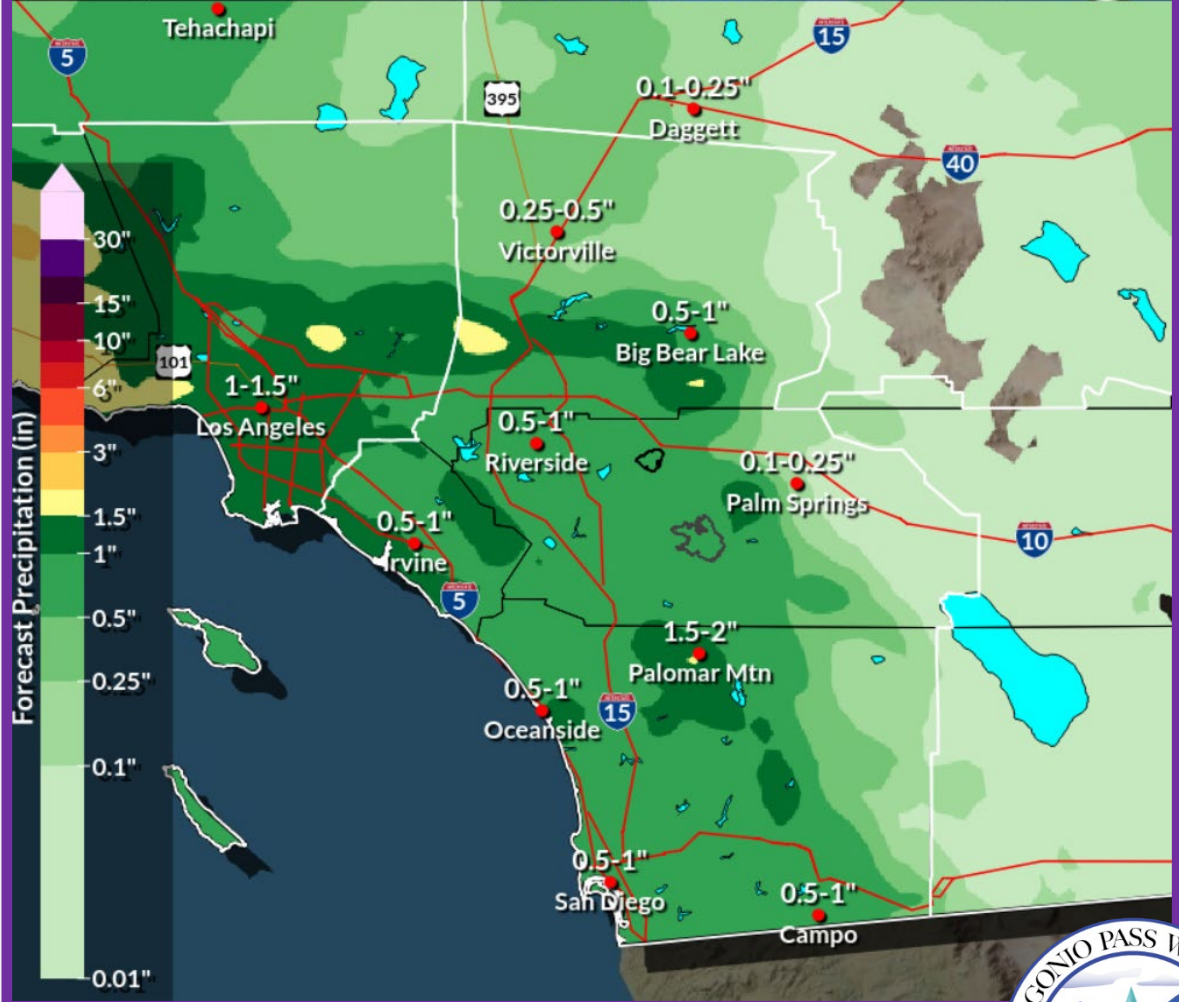


6-Day Forecast Precipitation

River Forecast Center
Sacramento, CA

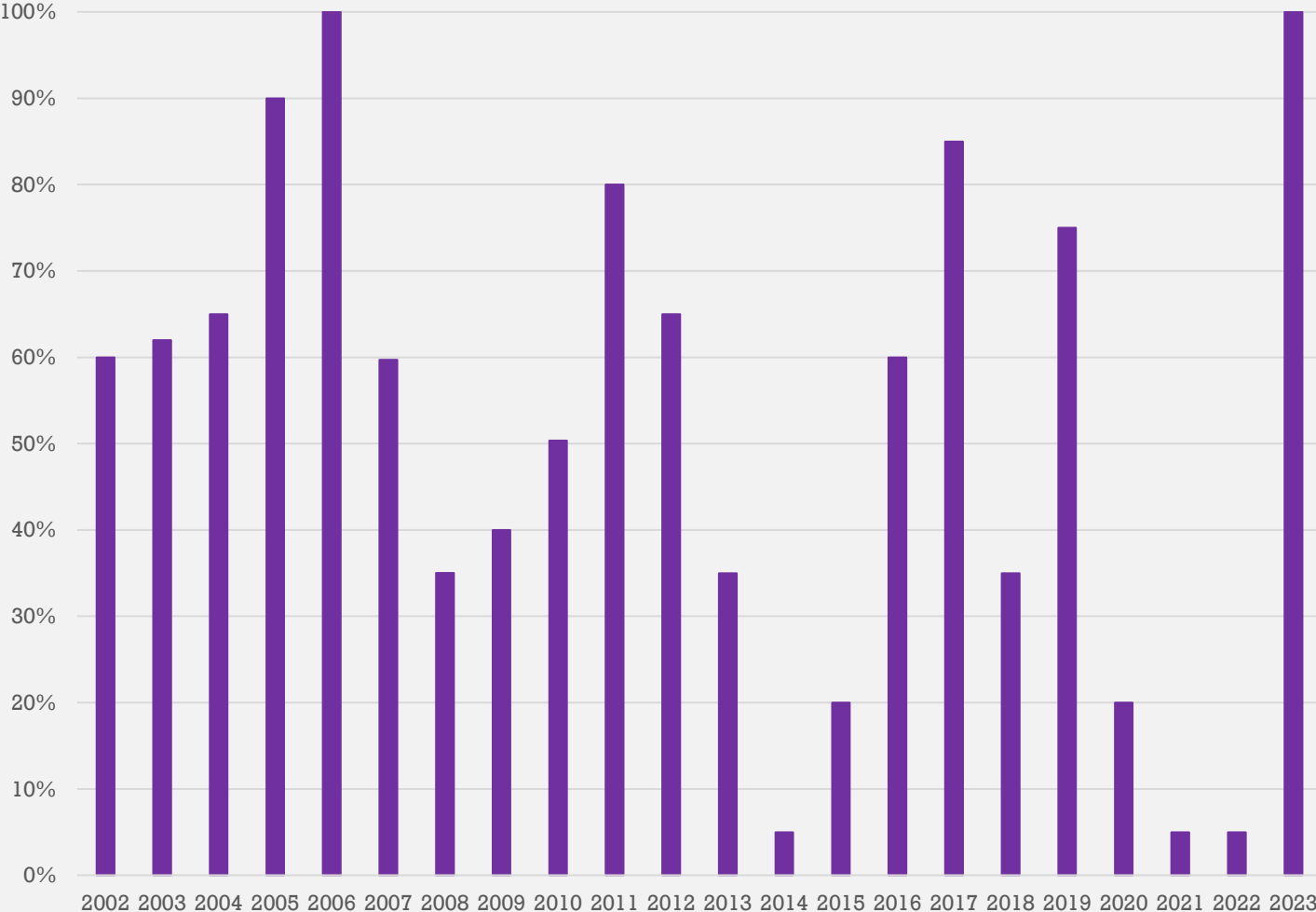


Tue Nov 14, 2023 4 AM PST to Mon Nov 20, 2023 4 AM PST Issued Nov 14, 2023 1:19 PM PST



Forecasted Hydrologic Conditions

Historic SWP Allocations



SGPWA Portfolio @ 100%		
Source	TOTAL (AF)	Delivered
SWP - Carryover	2,231	✓
SWP – CCWA Return Water	800	✓
SWP – City of Yuba Transfer	495	✓
SWP – Article 21	5,075	✓
SWP - Table A	17,300	✓
SWP - Ventura	10,000	✓
Subtotal SWP	35,901	
Non-SWP - Nickel Water	1,700	✓
Total	37,601	

**Subject to Final Verification*



2023 SWP Allocation & Portfolio Update

Water Orders 2023

Total Current Requests: 21,322 AF



BCVWD

- 18,000 AF
 - 11,000 AF (Demands) ✓
 - 7,000 AF (Banking) ✓



YVWD

- 1,822 AF (Direct Demand) ✓
- 500 AF (Recharge Demand) ✓



City of Banning

- 750 AF (Demands) ✓
- 250 AF (Banking) ✓



SGPWA

- TBD (Future Supply)



Water Orders 2024

Total Current Requests: 21,950 AF



BCVWD

- 18,200 AF
 - 11,200 AF (Demands)
 - 7,000 AF (Banking)



YVWD

- 1,500 AF (Direct Demand)
- 750 AF (Recharge Demand)



City of Banning

- 1,250 AF (Demands)
- 250 AF (Banking)

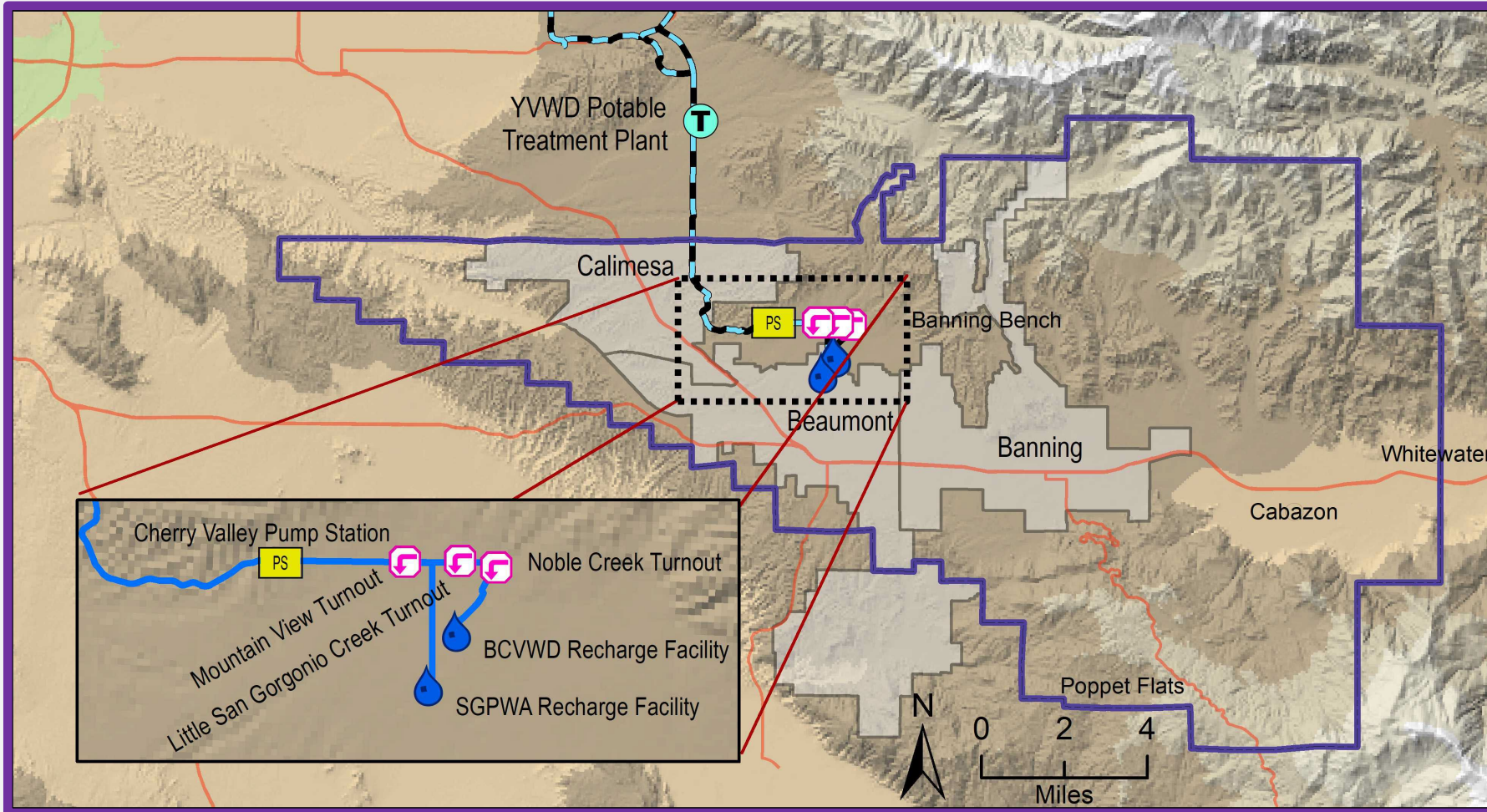


SGPWA

- TBD (Future Supply)



Water Orders 2023 & 2024



	Jan	Feb	Mar	Apr	May	Jun	Jul	Aug	Sept	Oct	Nov	Dec	Total
Recharge	0	1,339	2,539	2,529	1,454	1,984	1,813	1,770	1,290	2,013	2,100		18,831
Direct	0	0	0	0	0	14	56	10	0	0	0		80

**Estimated*
**From Local Storage*



Local Deliveries 2023 (acre-feet)

Subject to Final Verification





Brookside East Recharge Facility



BCVWD Recharge Facilities



November Recharge Activities

