



2023 Water Portfolio Update

BOARD OF DIRECTORS

10/16/2023

Discussion Topics



SWP RECAP



2023 WATER
PORTFOLIO UPDATE



CARRYOVER
MITIGATION

Discussion Topics



SWP RECAP



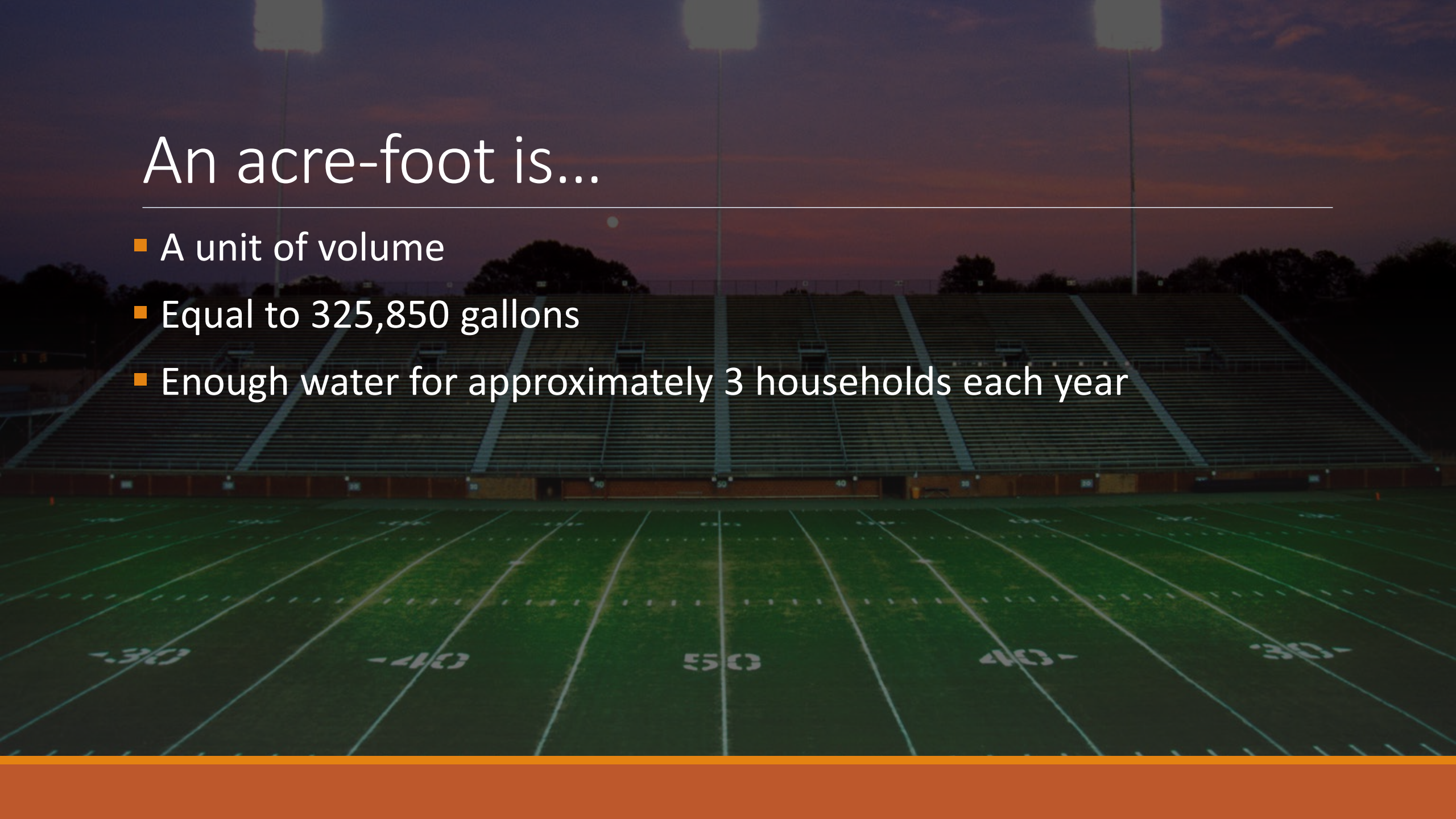
2023 WATER
PORTFOLIO UPDATE



CARRYOVER
MITIGATION

An acre-foot is...

- A unit of volume
- Equal to 325,850 gallons
- Enough water for approximately 3 households each year



State Water Project Recap



- The State Water Project moves upwards of 4 million acre-feet annually
- For SWP to arrive at SGPWA, water moves from...
 - Lake Oroville to the Sacramento-San Joaquin Delta
 - Delta to San Luis Reservoir
 - San Luis Reservoir to Edmonston Pump Station
 - Edmonston Pump Station to Pearblossom Pump Station
 - Pearblossom to Lake Silverwood/Devi's Canyon
 - Lake Silverwood/Devi's Canyon to SGPWA
- Water travels over 500 miles before it gets to SGPWA

Water Supply Contract Recap

- The Water Supply Contract grants Contractors access to SWP
- **Table A** is the annual entitlement water in which a Contractor participates
- **Carryover water** is unused water from previous years Table A
- **Interruptible water (Article 21)** is excess water available to Contractors in very wet years
- **Non-SWP water** is water that originates outside the SWP family

Discussion Topics



SWP RECAP



2023 WATER
PORTFOLIO UPDATE



CARRYOVER
MITIGATION

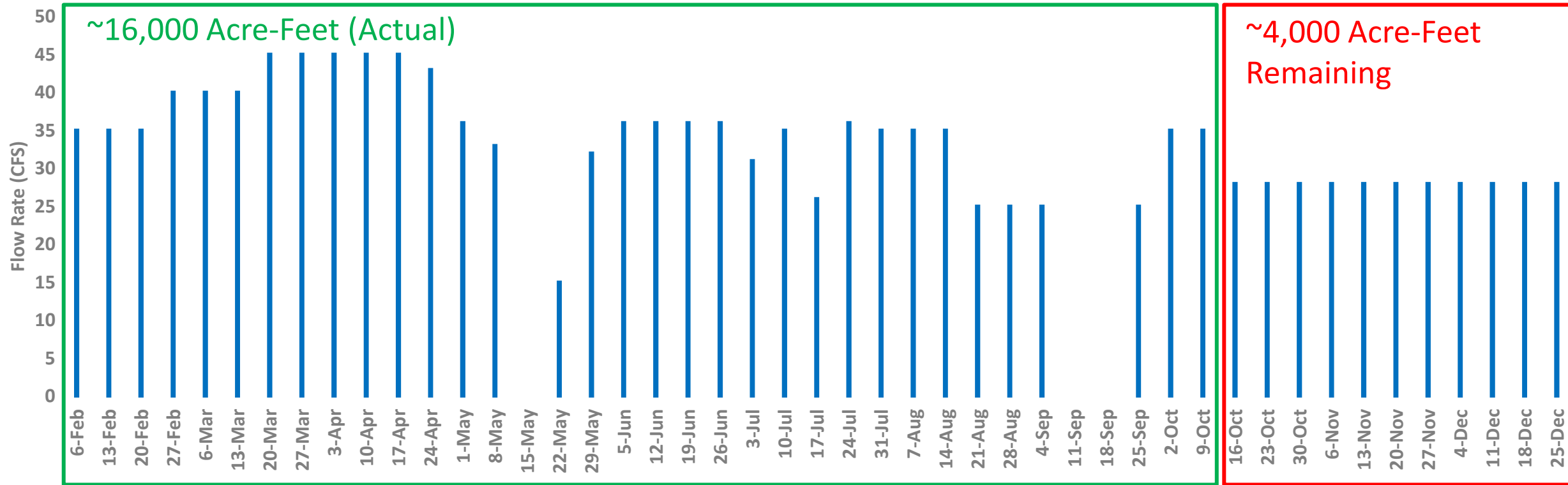
The allocation is at 100% for 2023

2023 Water Portfolio	
(All Values in Acre-Feet)	
Type of Water	Amount at 100% Allocation
SGPWA Table A	17,300
Ventura Table A	10,000
Beginning Year Carryover	2,231
Transfers/Exchanges	1,295
Article 21	5,075
Nickel Water	1,700
Total	37,500

Flow Rate per Week

20k AF Delivered by End of Year

(Deliveries do not include direct deliveries to YVWD)



Despite capacity restrictions, we are anticipating delivering 20,000 acre-feet this year

Operational realities will result in over 13k acre-feet of carryover going into 2024

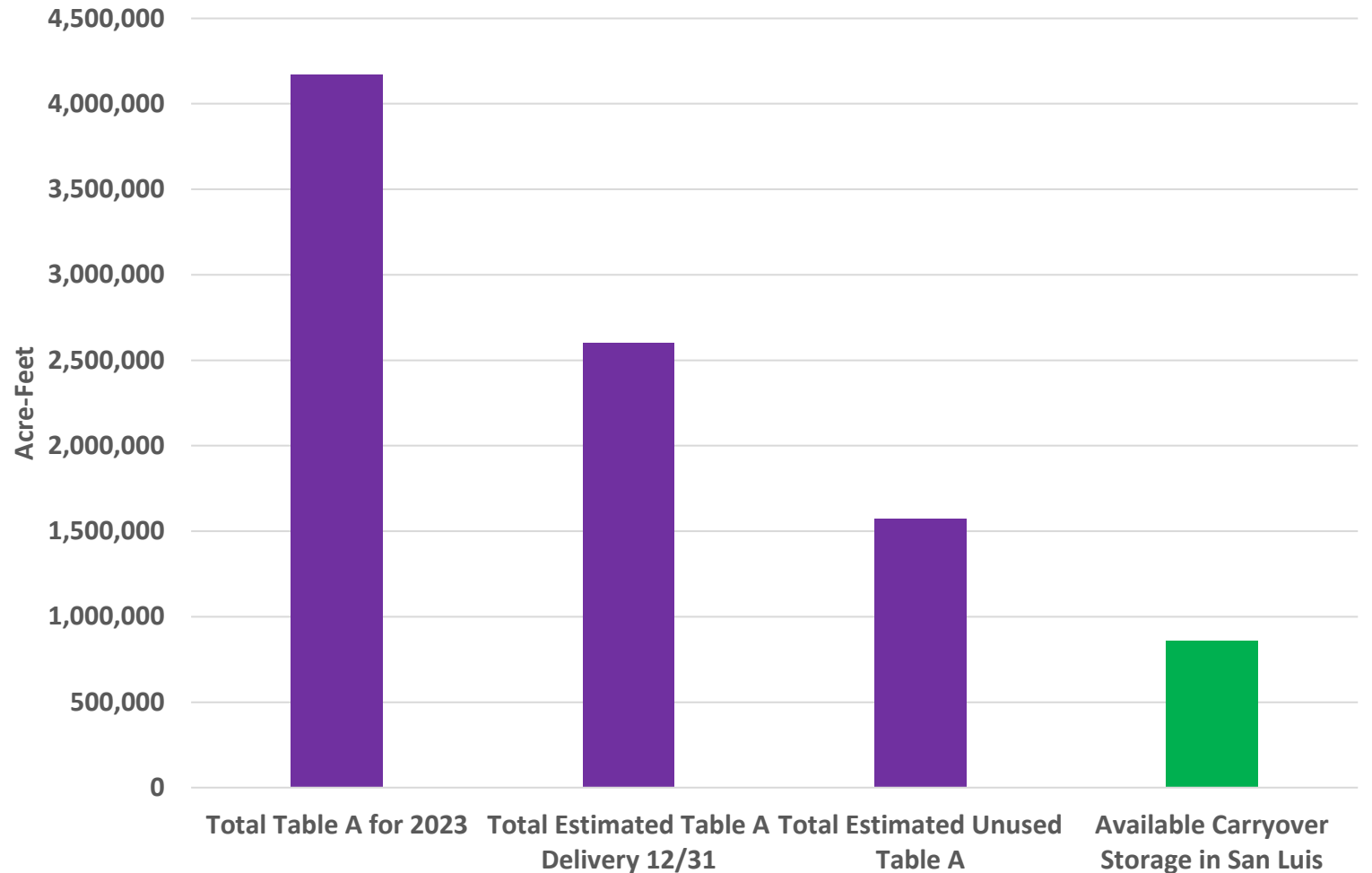
2023 Water Deliveries and Carryover

(All Values in Acre-Feet)

Type of Water	Amount at 100% Allocation
Total Portfolio	37,500
Anticipated Replenishment Deliveries	20,000
Anticipated Direct Deliveries to YVWD	500
Anticipated Water Transfer/Exchanges	4,000
Anticipated Carryover into 2024	13,000*

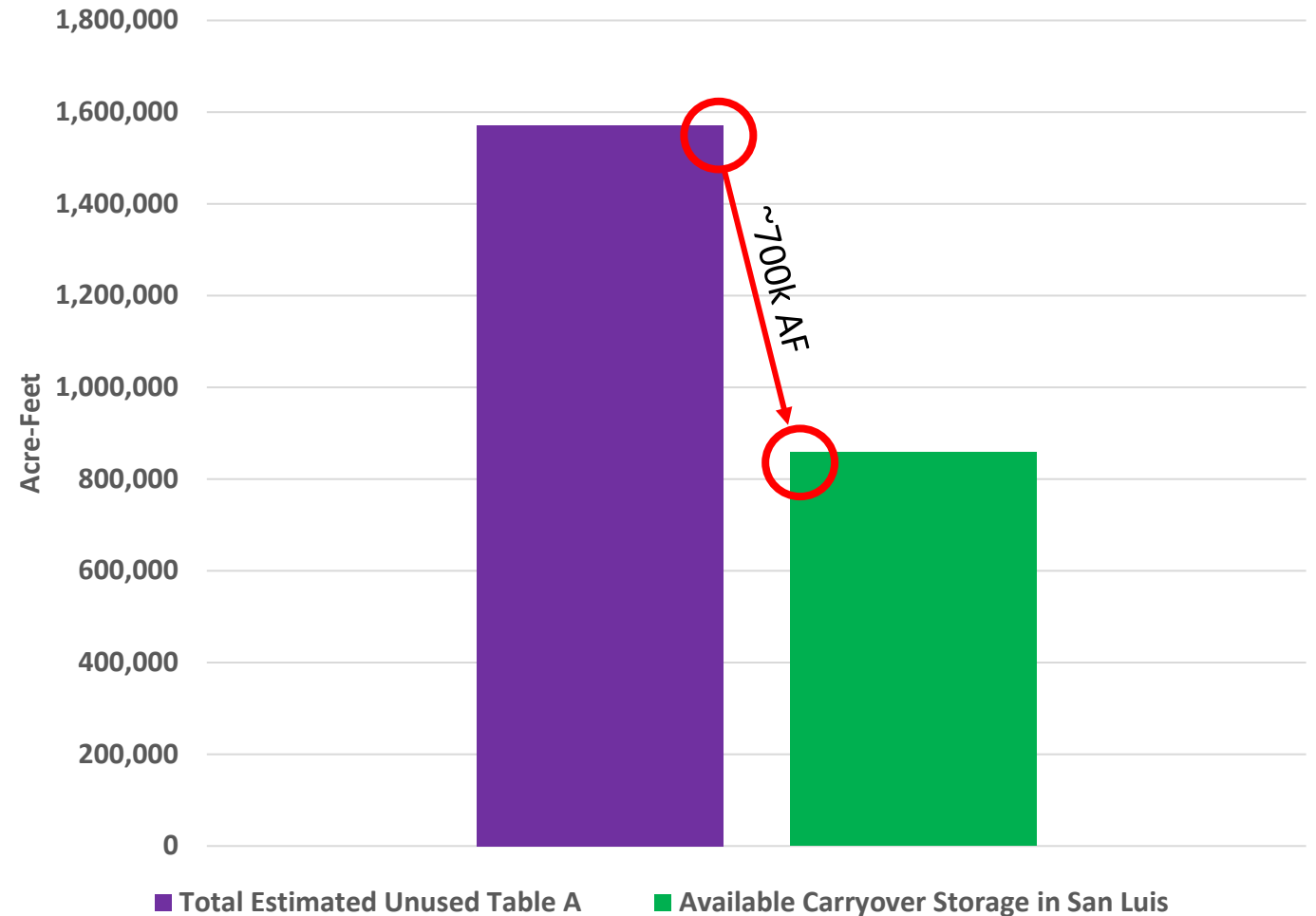
Statewide, only 60% of the allocated Table A for 2023 is expected to be delivered. This would classify 40% of the allocation as “Unused Table A”

2023 Allocated Table A and Estimated Deliveries



~1.5M acre-feet of Table A is estimated to be unused by the end of 2023. The available carryover storage in San Luis Reservoir is ~850k acre-feet

2023 Unused Table vs. San Luis Reservoir Max Storage



One caveat to carryover is that in a 100% allocation year, only 50% of the contracted Table A can be carried over into the next year

Carryover at 50% of Table A		
(All Values in Acre-Feet)		
Type of Water	Max Carryover amount at 100% Allocation	Certainty Going into 2024*
SGPWA Table A	8,650	Higher certainty
Ventura Table A	5,000	Lower certainty
Total	13,650	8,650 to 13,650

* If Article 21 (large storm events) is available on January 1, 2024, then the carryover amount will likely be "0," BUT SGPWA would be delivering Article 21.

2024 is likely to be another wet year

Possible 2024 Water Portfolio with Carryover

(All Values in Acre-Feet)

Type of Water	Amount at 50% Allocation
SGPWA Table A	8,650
Ventura Table A	5,000
Beginning Year Carryover	8,650
Transfers/Exchanges	0
Article 21	0
Nickel Water	1,700
Total	24,000

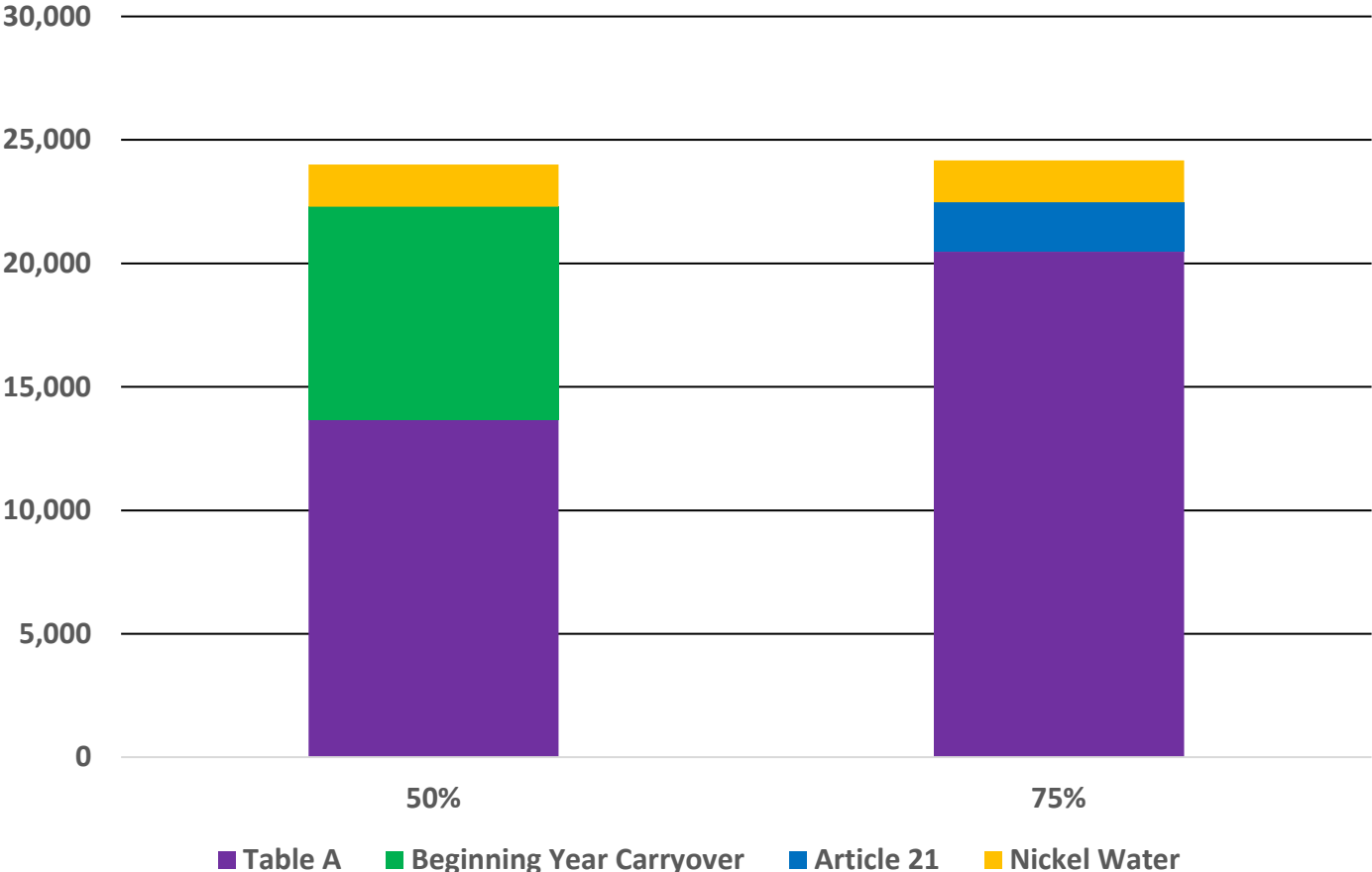
Possible 2024 Water Portfolio without Carryover

(All Values in Acre-Feet)

Type of Water	Amount at 75% Allocation
SGPWA Table A	12,975
Ventura Table A	7,500
Beginning Year Carryover	0
Transfers/Exchanges	0
Article 21	0
Nickel Water	1,700
Total	22,200 + Article 21

San Luis Reservoir storage is used for carryover and next year's Table A

Comparison of Lower Allocation with Carryover vs. Higher Allocation without Carryover



Discussion Topics



SWP RECAP



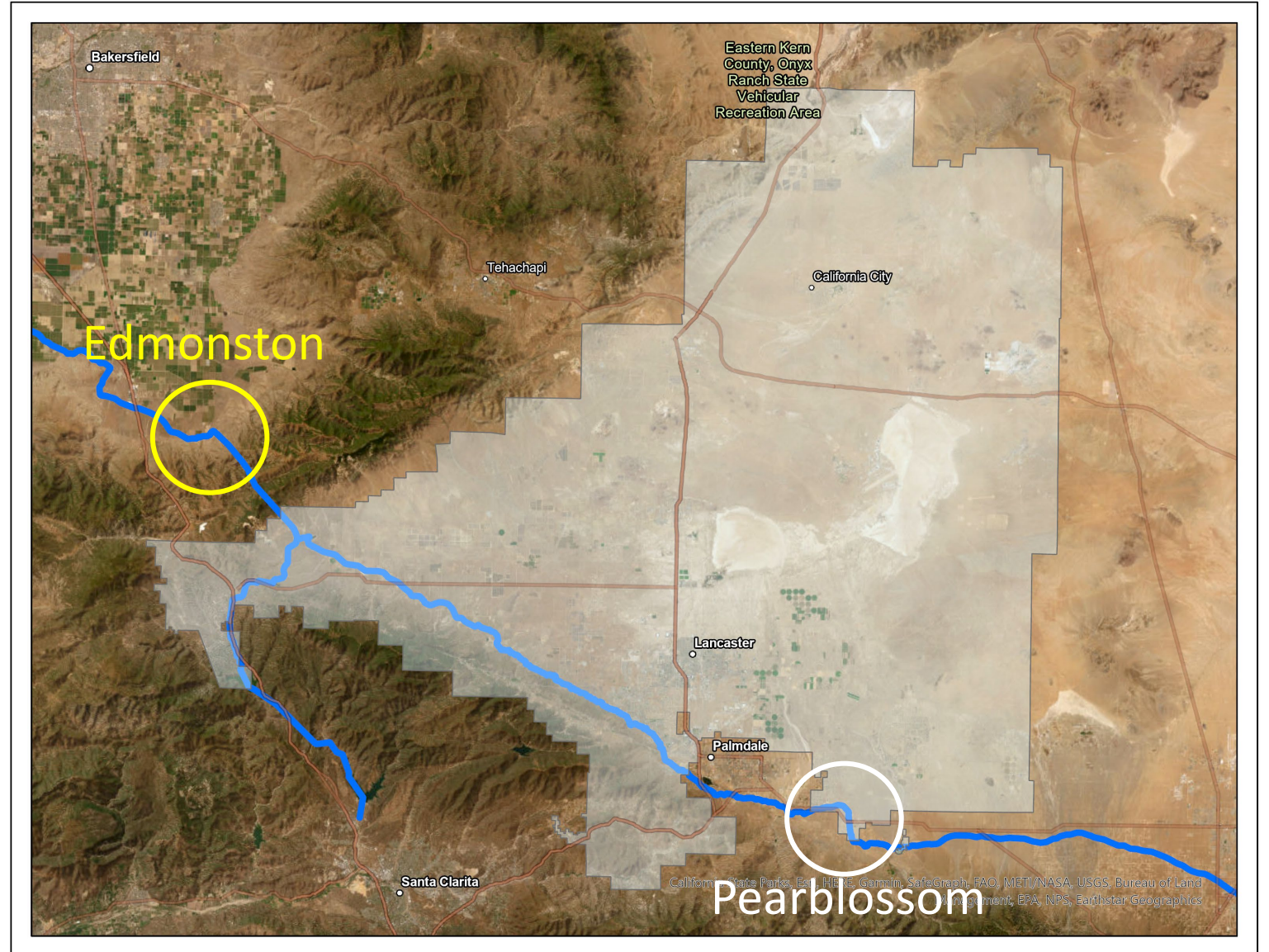
2023 WATER
PORTFOLIO UPDATE



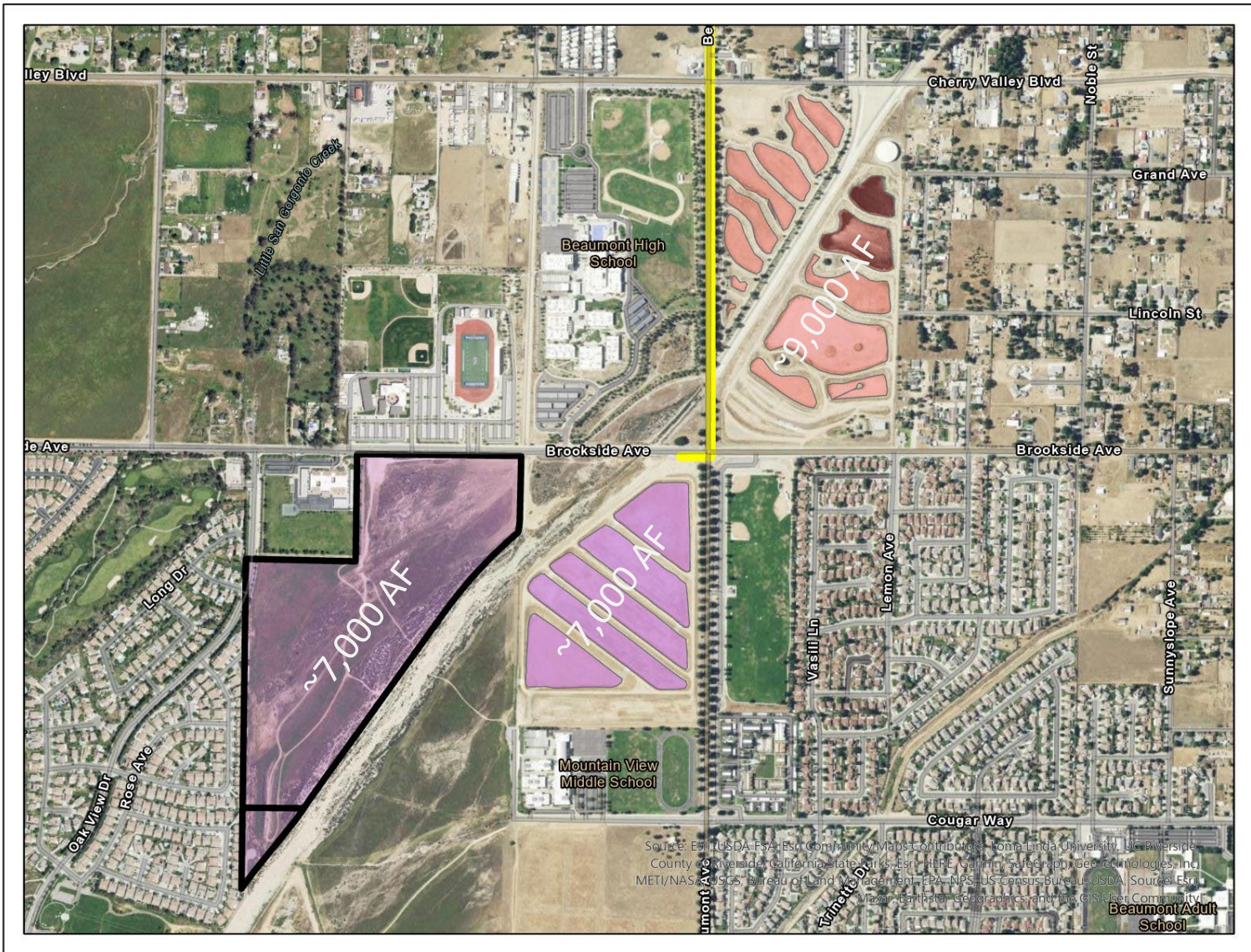
CARRYOVER
MITIGATION

SGPWA did an exchange with AVEK

- AVEK is starting to take delivery of SGPWA water and will take between 2,500 acre-feet and 4,000 acre-feet this year



And Lastly...



What if
Brookside
West were
operational
this year?

Questions?
