

# Water Conditions Update



Board of Directors Meeting  
September 18, 2023



**Weather  
&  
Reservoir  
Conditions**

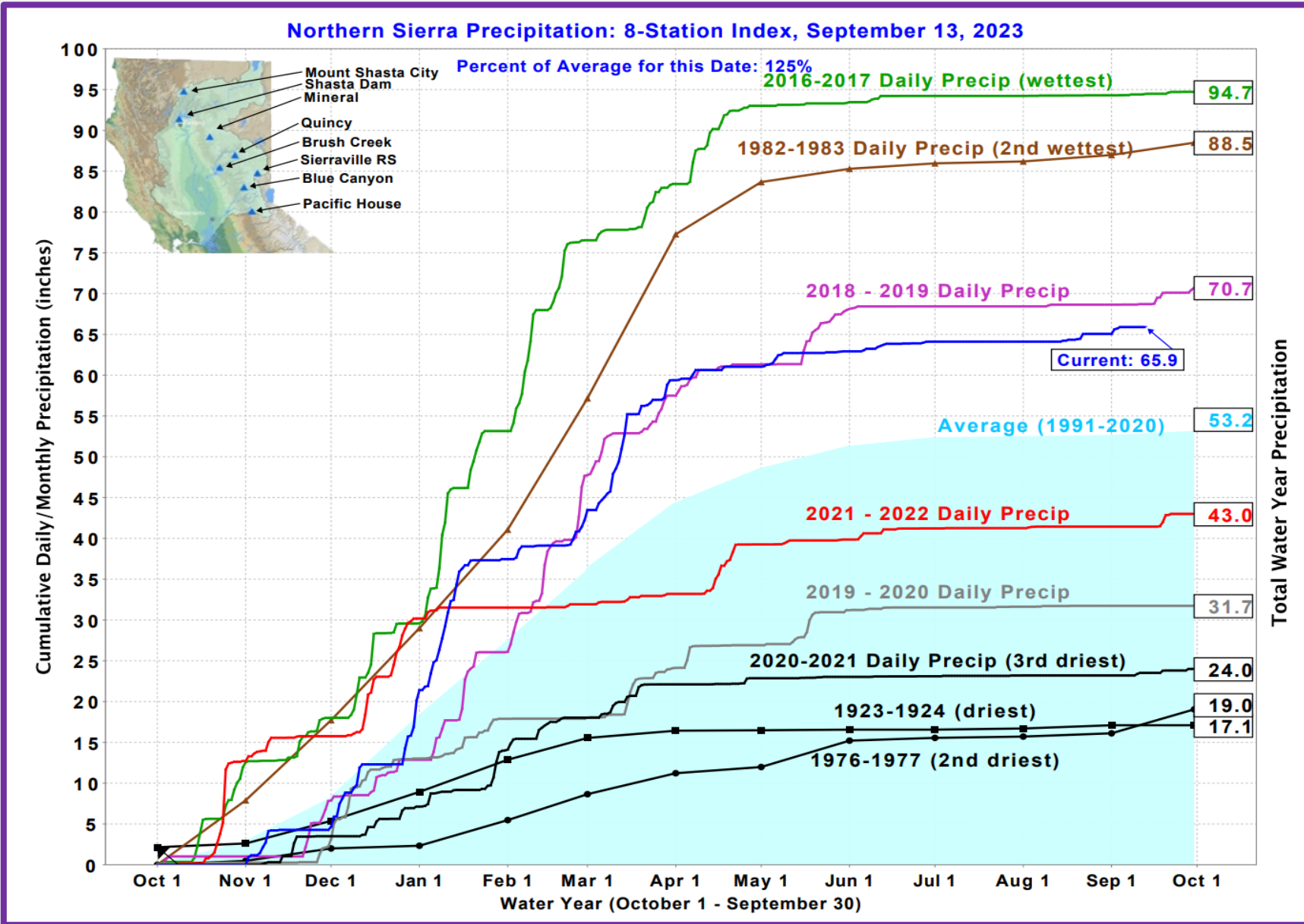
**SWP  
Allocation &  
Water  
Portfolio**

**SWP  
Deliveries &  
Recharge**



## **Discussion**





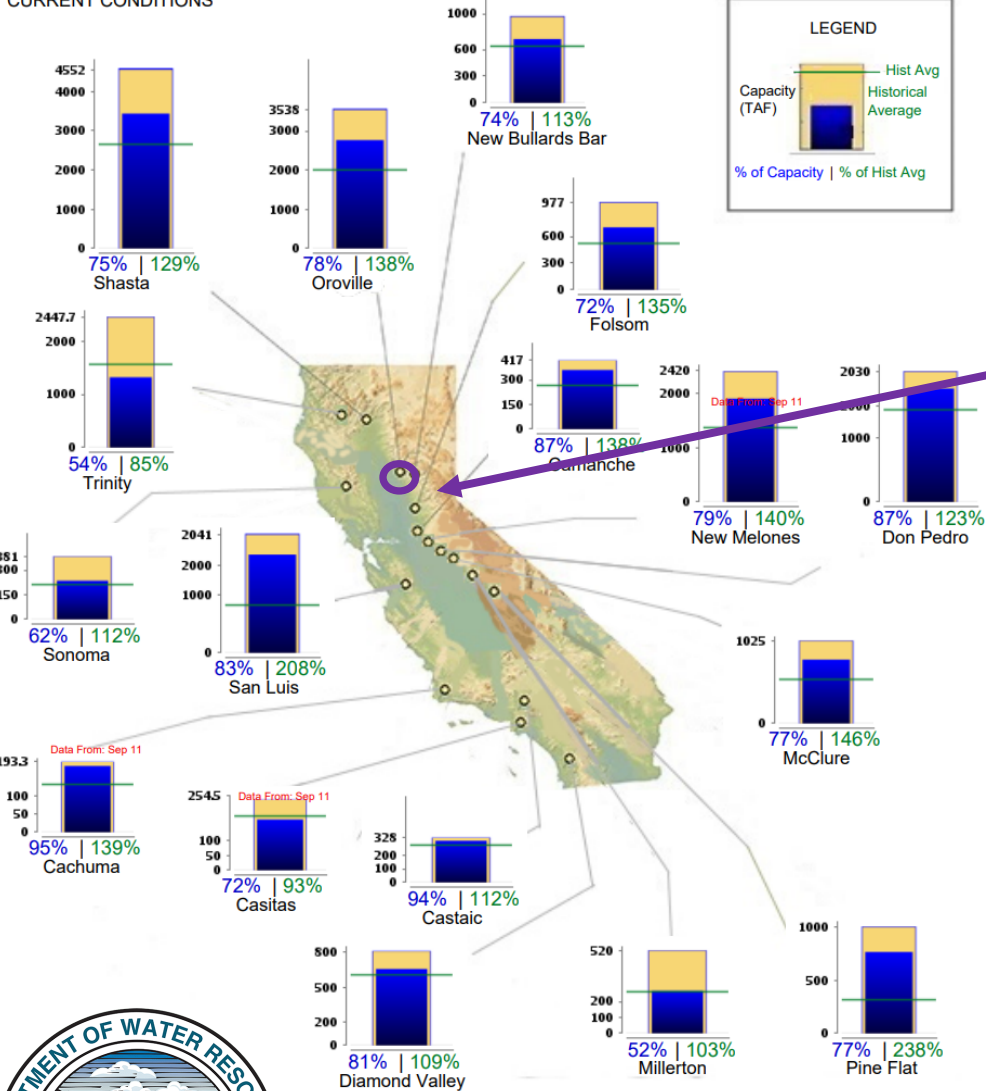
# State Precipitation Stations – North Sierra



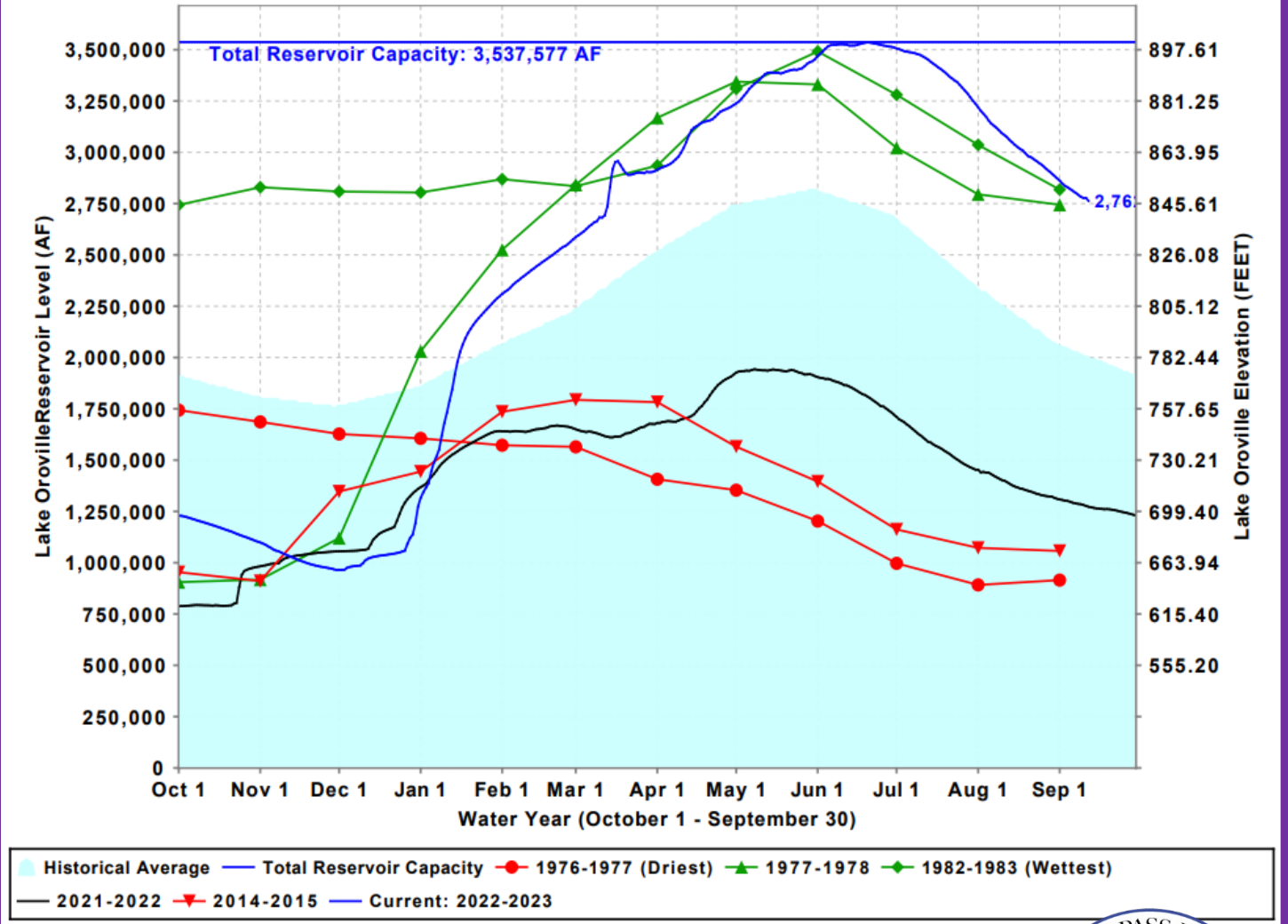
# CALIFORNIA MAJOR WATER SUPPLY RESERVOIRS

CURRENT CONDITIONS

Midnight - September 12, 2023



# Lake Oroville Levels: Various Past Water Years and Current Water Year, Ending At Midnight September 12, 2023



August - September Change in Storage: - 272,998 AF

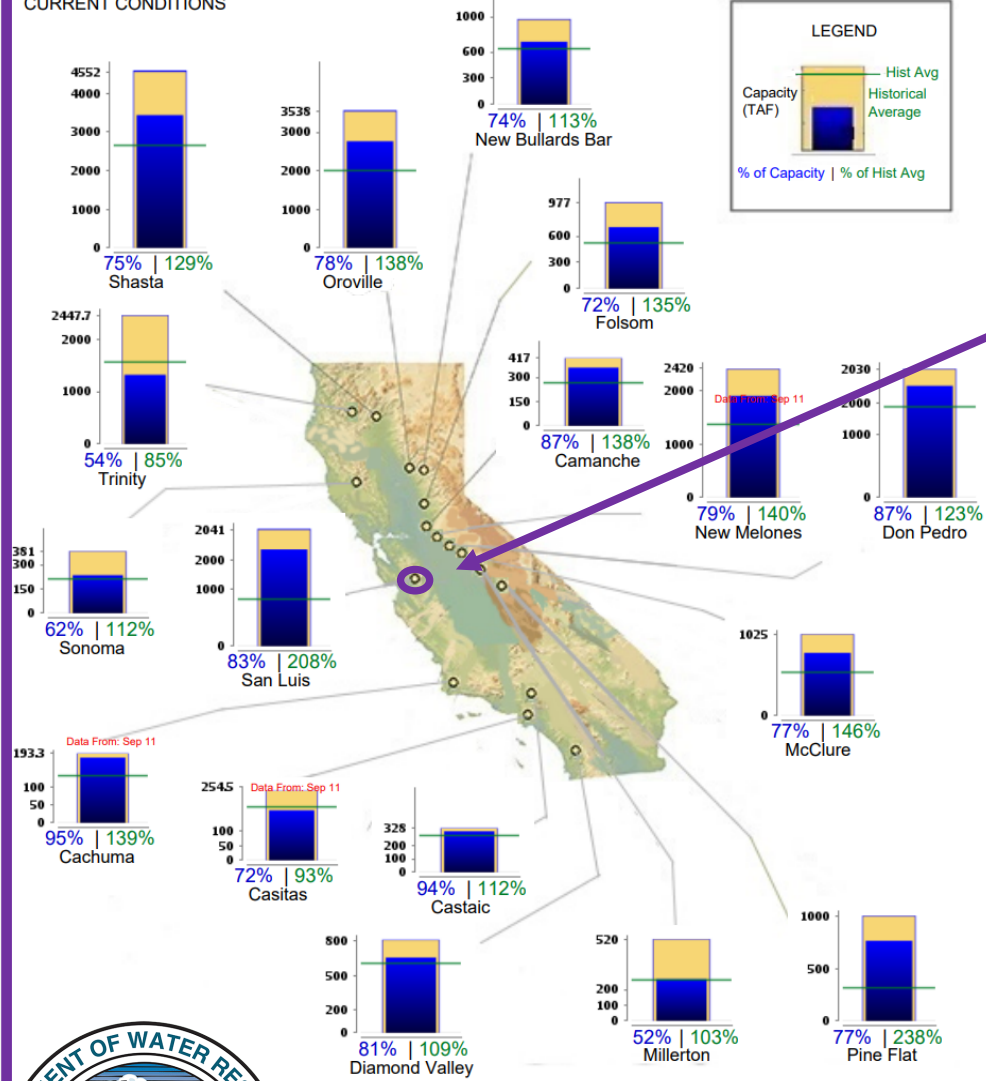
# Lake Oroville Reservoir Levels



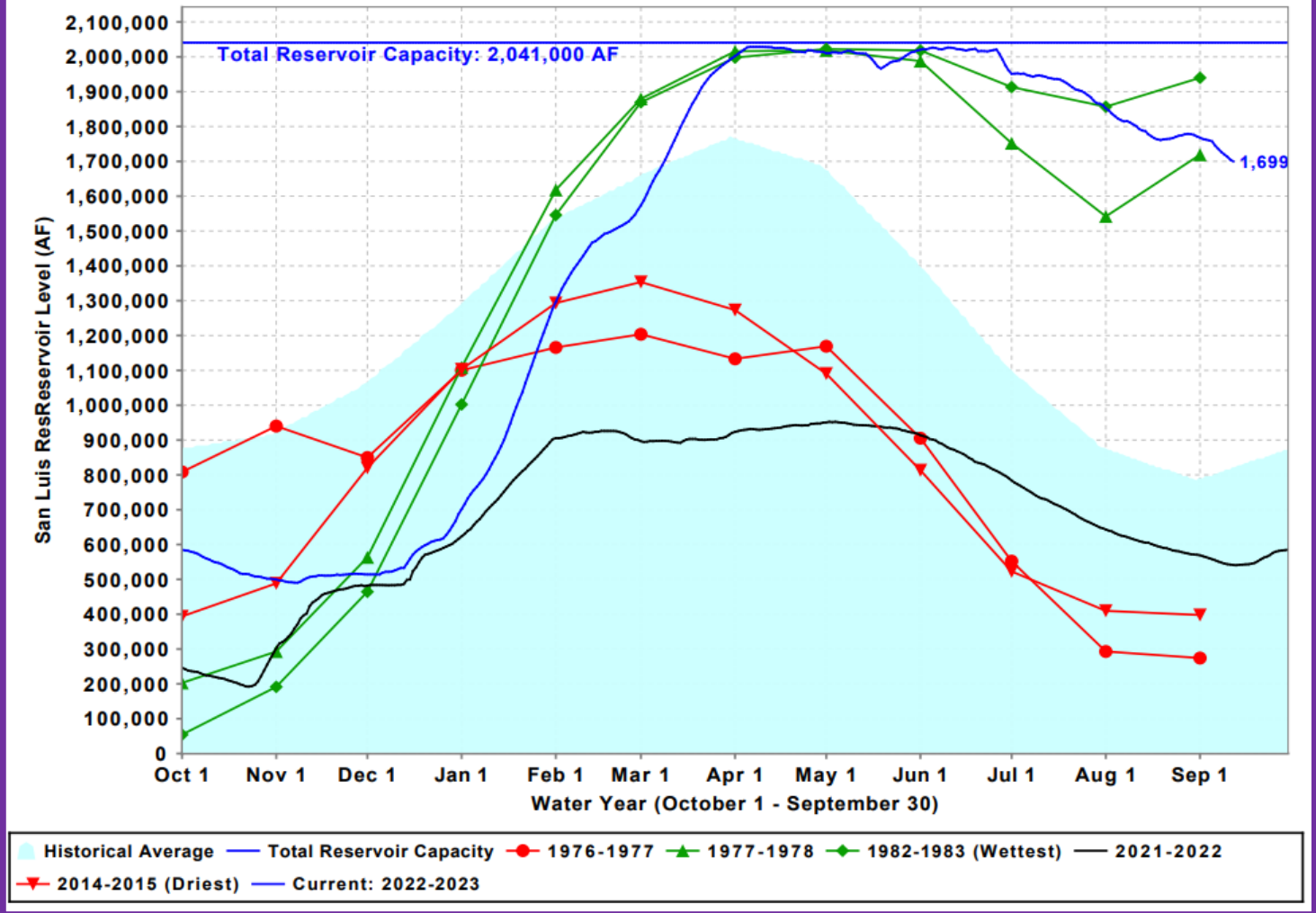
# CALIFORNIA MAJOR WATER SUPPLY RESERVOIRS

CURRENT CONDITIONS

Midnight - September 12, 2023



# San Luis Res Levels: Various Past Water Years and Current Water Year, Ending At Midnight September 12, 2023

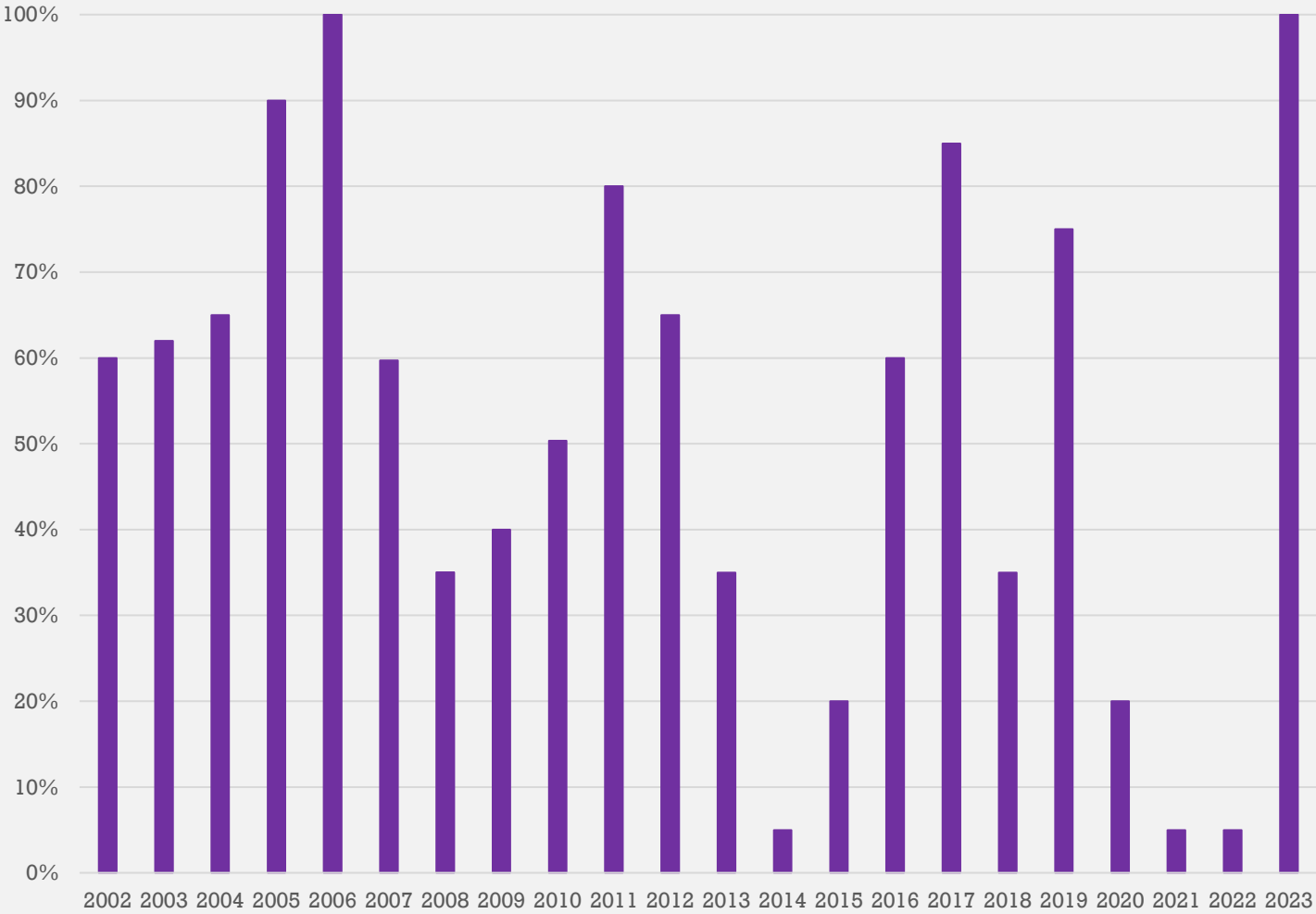


August – September Change in Storage: - 77,698 AF

# San Luis Reservoir Levels



Historic SWP Allocations



SGPWA Portfolio @ 100%		
Source	TOTAL (AF)	Delivered
SWP - Carryover	2,231	✓
SWP – CCWA Return Water	800	✓
SWP – City of Yuba Transfer	495	✓
SWP – Article 21	5,075	✓
SWP - Table A	17,300	✓
SWP - Ventura	10,000	
<b>Subtotal SWP</b>	<b>35,901</b>	
Non-SWP - Nickel Water	1,700	
<b>Total</b>	<b>37,601</b>	

*\*Subject to Final Verification*



# 2023 SWP Allocation & Portfolio Update

# Water Orders 2023

Total Current Requests: 21,322 AF



## BCVWD

- 18,000 AF
  - 11,000 AF (Demands) ✓
  - 7,000 AF (Banking) ✓



## YVWD

- 1,822 AF (Direct Demand) ✓
- 500 AF (Recharge Demand) ✓



## City of Banning

- 750 AF (Demands) ✓
- 250 AF (Banking) ✓



## SGPWA

- TBD (Future Supply)



# Water Orders 2024

Total Current Requests: 21,950 AF



## BCVWD

- 18,200 AF
  - 11,200 AF (Demands)
  - 7,000 AF (Banking)



## YVWD

- 1,500 AF (Direct Demand)
- 750 AF (Recharge Demand)



## City of Banning

- 1,250 AF (Demands)
- 250 AF (Banking)

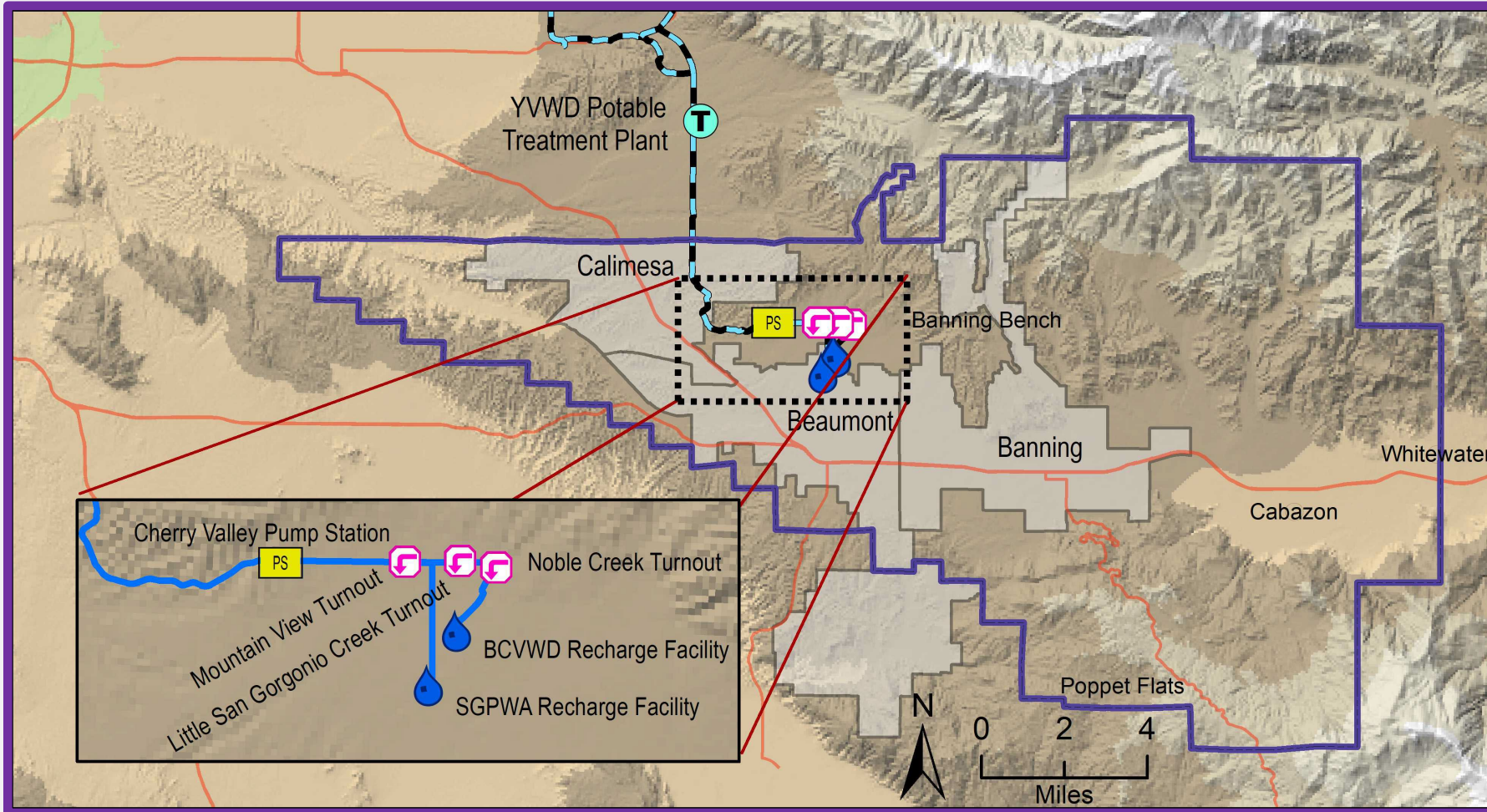


## SGPWA

- TBD (Future Supply)



# Water Orders 2023 & 2024



	Jan	Feb	Mar	Apr	May	Jun	Jul	Aug	Sept	Oct	Nov	Dec	Total
Recharge	0	1,339	2,539	2,529	1,454	1,984	1,813	1,770	1,200				14,628
Direct	0	0	0	0	0	14	56	10					80

\*Estimated  
\*From Local Storage



# Local Deliveries 2023 (acre-feet)

Subject to Final Verification





Brookside East Recharge Facility



BCVWD Recharge Facilities



# September Recharge Activities