

Operations and Maintenance Update

FINANCE AND ENGINEERING COMMITTEE

JUNE 19, 2023



Brookside East Recharge Facility Maintenance

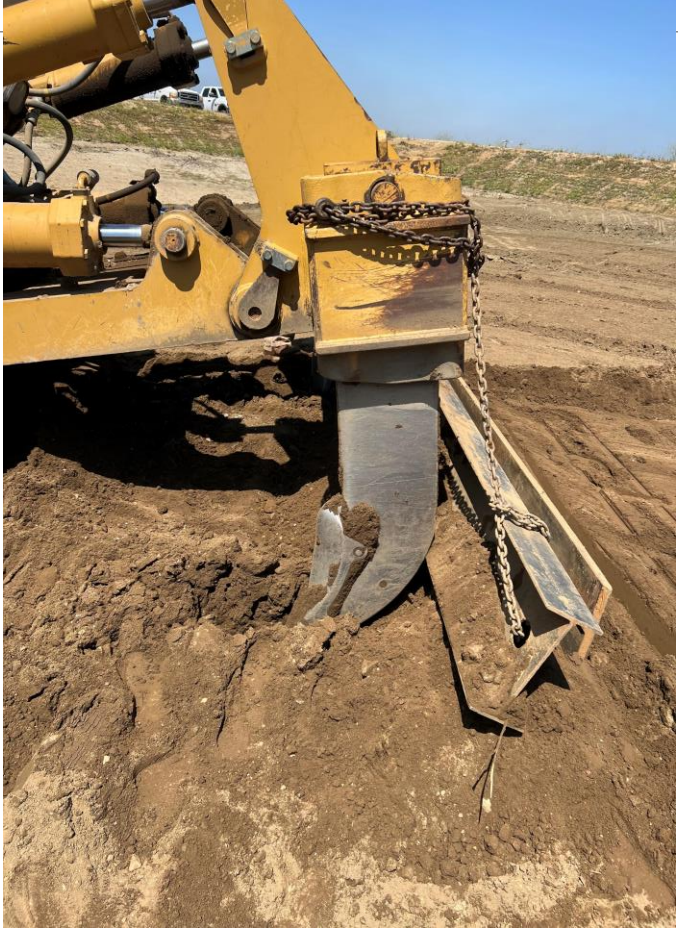
- SWP EBX shut down from May 16 – 22 for maintenance on Foothill Pipeline
- This shutdown allowed SGPWA staff to drain the ponds and perform maintenance before placing them back in service
- Staff observed a noticeable decrease in percolation rates at the ponds and had to decrease flow multiple times to avoid spilling



Brookside East Recharge Facility Maintenance



Brookside East Recharge Facility Maintenance



Ripping and Recharge of Brookside East



Meter Calibration

- Mountain View and Noble Creek Turnout meters calibrated on June 6, 2023
- Provides certification that our meters are accurate and provide reliable data
- Annual calibration of our meters ensures:
 - Accuracy
 - Compliance and Regulations
 - Equipment Maintenance
 - Performance Monitoring



Underground Service Alert (USA) Markings

- Performing ongoing Underground Service Alert (USA) markings
- 77 USA tickets received and responded to in May
- Revising the current coverage area for SGPWA facilities from Thomas Bros Guide format to GIS Shapefile format



Questions?

