



# 2023 Water Portfolio Update

---

WORKSHOP

5/15/2023

# Discussion Topics

---



SWP RECAP



2023 WATER  
PORTFOLIO

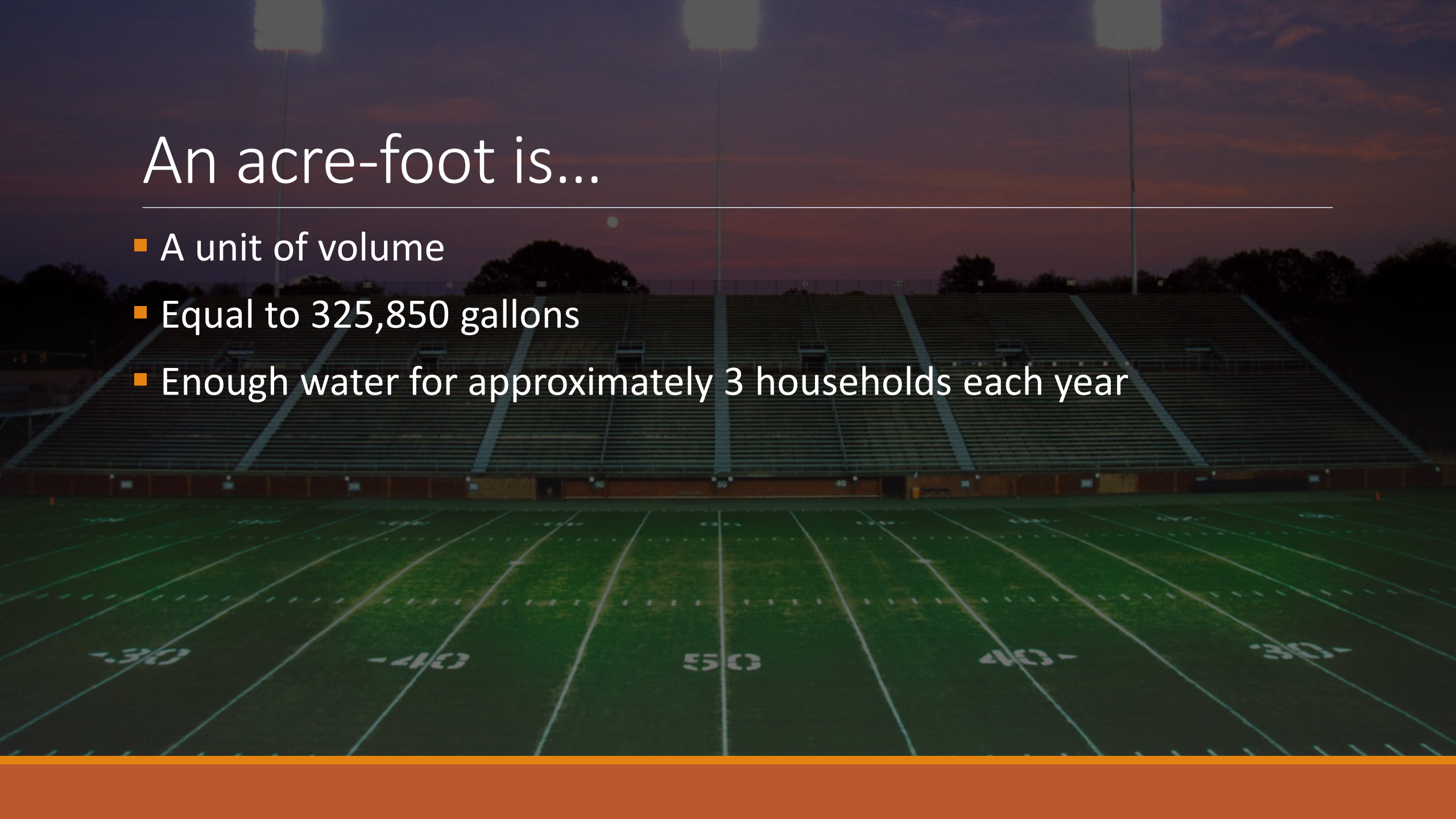


CARRYOVER  
MITIGATION

# An acre-foot is...

---

- A unit of volume
- Equal to 325,850 gallons
- Enough water for approximately 3 households each year



# State Water Project Recap



- The State Water Project moves upwards of 4 million acre-feet annually
- For SWP to arrive at SGPWA, water moves from...
  - Lake Oroville to the Sacramento-San Joaquin Delta
  - Delta to San Luis Reservoir
  - San Luis Reservoir to Edmonston Pump Station
  - Edmonston Pump Station to Pearblossom Pump Station
  - Pearblossom to Lake Silverwood/Devi's Canyon
  - Lake Silverwood/Devi's Canyon to SGPWA
- Water travels over 500 miles before it gets to SGPWA

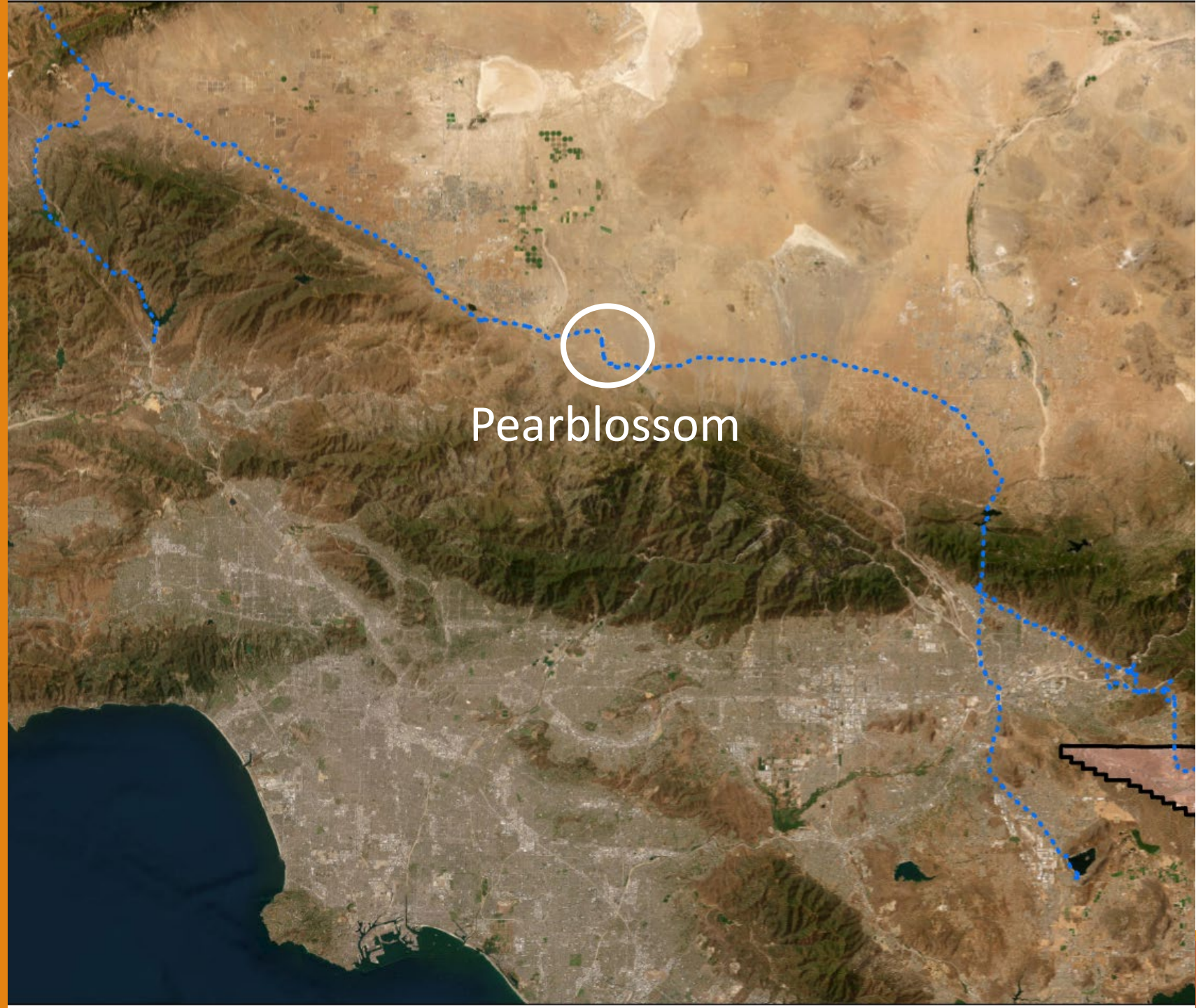
# Water Supply Contract Recap

---

- The Water Supply Contract grants Contractors access to SWP
- **Table A** is the annual entitlement water in which a Contractor participates
- **Carryover water** is unused from previous years Table A
- **Interruptible water (Article 21)** is excess water available to Contractors in very wet years
- **Non-SWP water** is water that originates outside the SWP family

# SGPWA's Main Restriction is in the East Branch

- During wet years, a restriction occurs at Pearblossom Pumping Plant
- This reduces SGPWA to 42 acre-feet per day
- This last occurred in 2019



Capacity constraints along the aqueduct can reduce the amount of water to our service area

---

This means we would leave more water in San Luis Reservoir as carryover

---

This last happened in 2019

---

2019 was a 75% allocation year

---

SGPWA spilled 3,702 Acre-feet in 2019

# Discussion Topics

---



SWP RECAP



2023 WATER  
PORTFOLIO



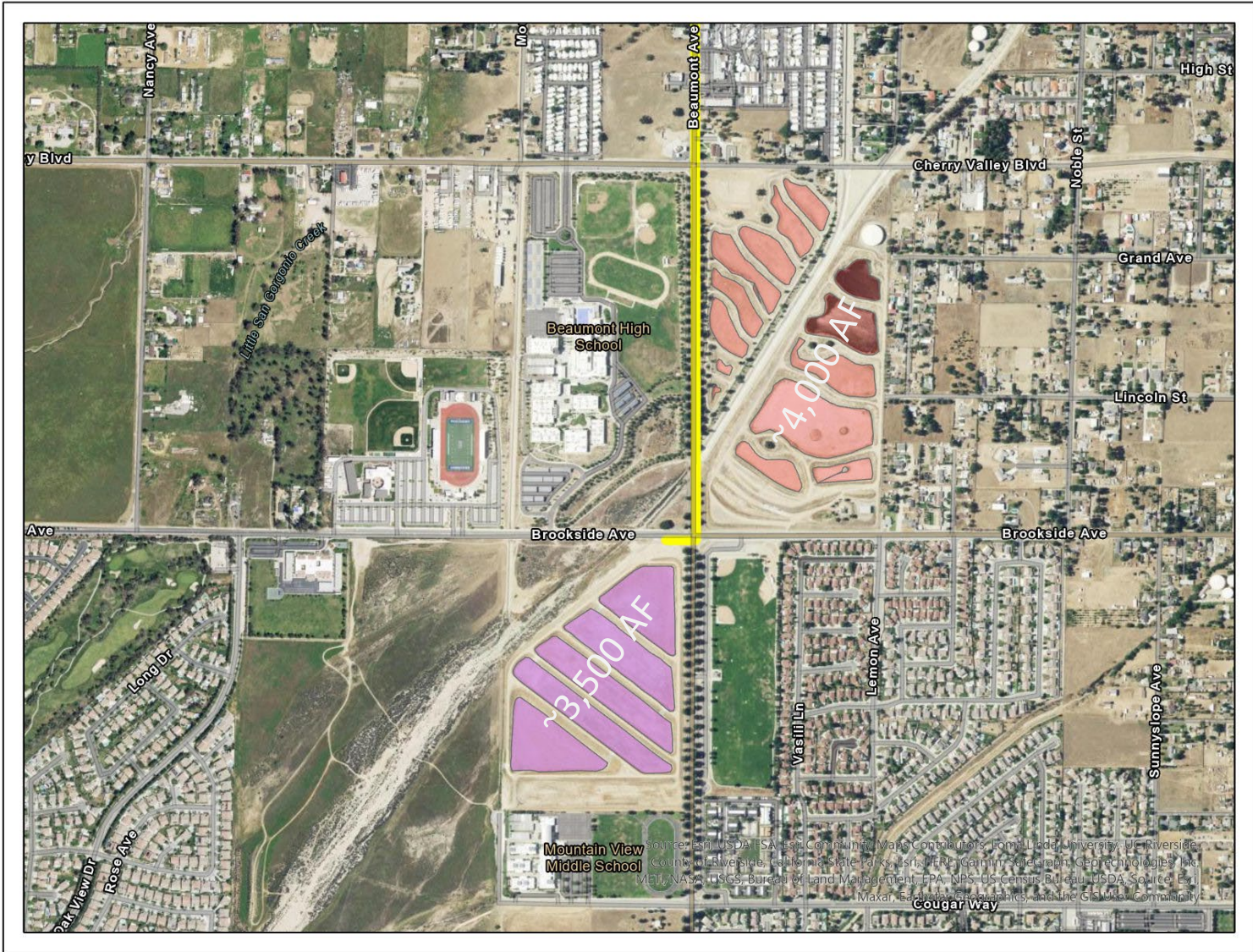
CARRYOVER  
MITIGATION



# SGPWA's current water portfolio exceeds 35k acre-feet for 2023

---

| 2023 Water Portfolio      |                           |
|---------------------------|---------------------------|
| (All Values in Acre-Feet) |                           |
| Type of Water             | Amount at 100% Allocation |
| SGPWA Table A             | 17,300                    |
| Ventura Table A           | 10,000                    |
| Beginning Year Carryover  | 2,231                     |
| Transfers/Exchanges       | 1,295                     |
| Article 21                | 3,000                     |
| Nickel Water              | 1,700                     |
| Total                     | 35,526                    |



~7,500 acre-feet has been recharged to date



# Operational realities will result in over 13k acre-feet of carryover going into 2024

---

## 2023 Water Deliveries and Carryover

(All Values in Acre-Feet)

| Type of Water                         | Amount at 100% Allocation |
|---------------------------------------|---------------------------|
| Total Portfolio                       | 35,526                    |
| Anticipated Replenishment Deliveries  | 20,000                    |
| Anticipated Direct Deliveries to YVWD | 1,822                     |
| Anticipated Carryover into 2024       | 13,704                    |

# 2024 is likely to be another wet year

---

## Possible 2024 Water Portfolio No Spill

(All Values in Acre-Feet)

| Type of Water            | Amount at 75% Allocation |
|--------------------------|--------------------------|
| SGPWA Table A            | 12,975                   |
| Ventura Table A          | 7,500                    |
| Beginning Year Carryover | 13,000                   |
| Transfers/Exchanges      | 0                        |
| Article 21               | 0                        |
| Nickel Water             | 1,700                    |
| Total                    | 35,175                   |

## Possible 2024 Water Portfolio w/ Spill

(All Values in Acre-Feet)

| Type of Water            | Amount at 75% Allocation |
|--------------------------|--------------------------|
| SGPWA Table A            | 12,975                   |
| Ventura Table A          | 7,500                    |
| Beginning Year Carryover | 0                        |
| Transfers/Exchanges      | 0                        |
| Article 21               | 0                        |
| Nickel Water             | 1,700                    |
| Total                    | 22,175                   |

# Discussion Topics

---



SWP RECAP



2023 WATER  
PORTFOLIO



CARRYOVER  
MITIGATION

There's a lot of water in the system, and Article 21 water is still present and may be present for a good chunk of the year



This means that our water portfolio continues to grow each week



Our anticipated end of year carryover will continue to grow and presents a spill risk



Transferring excess Table A or banking water may be an option BUT every contractor is swimming in water this year and banking capacity is low



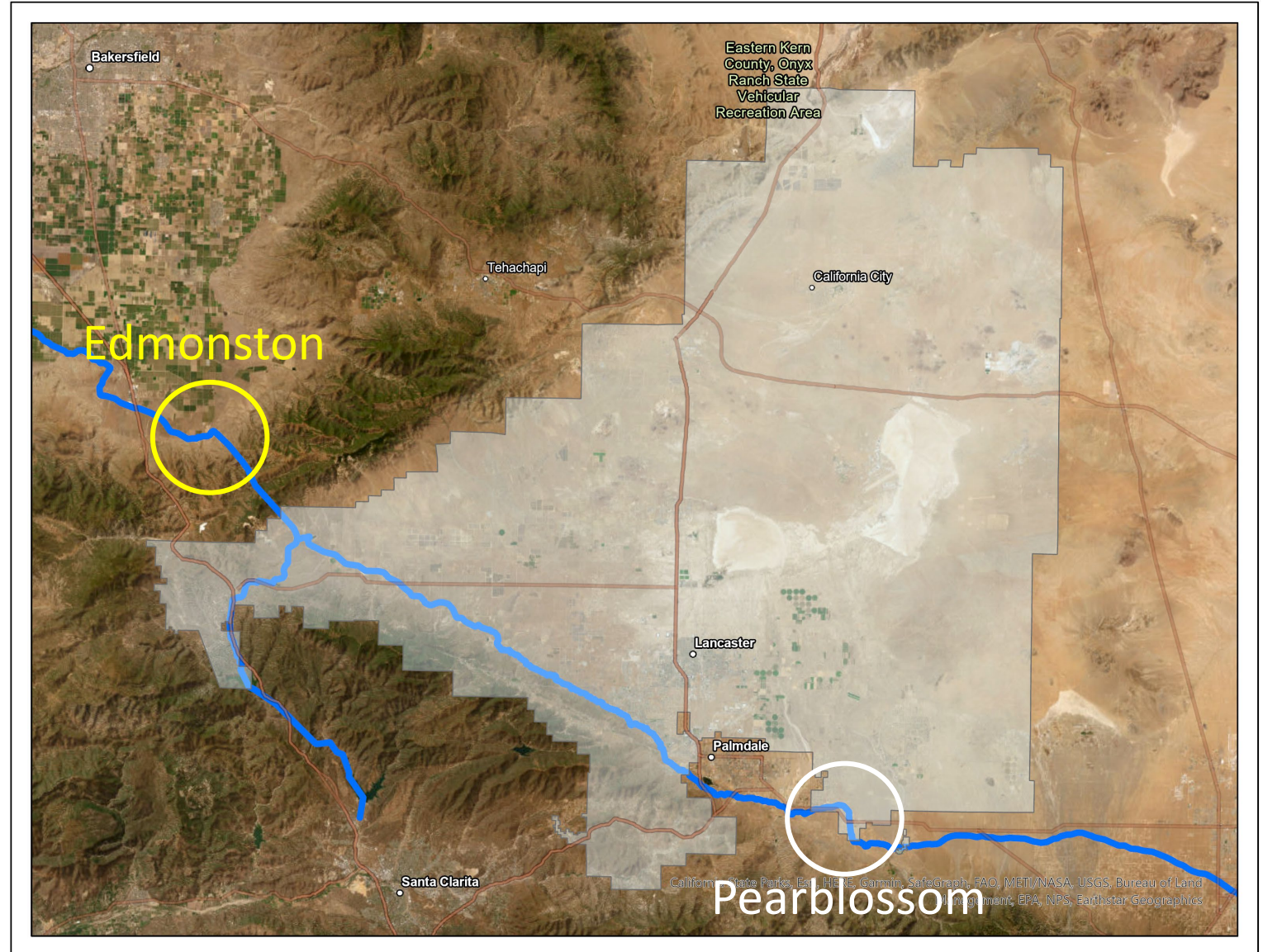
Paying back water debt from prior year transfers



Foregoing Nickel Water deliveries for the year may also be an option

Nickel Water is outlined in an agreement between AVEK and SGPWA

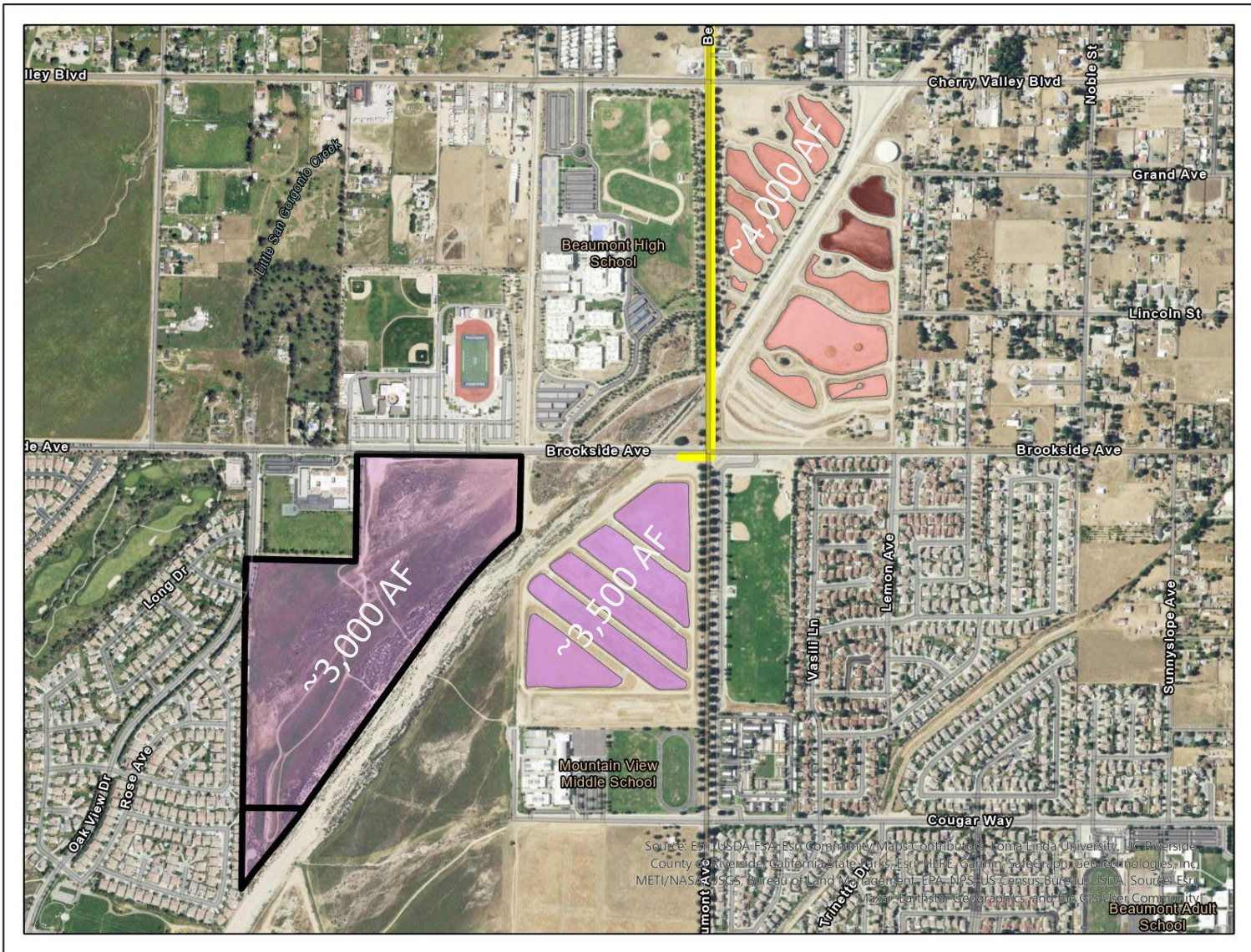
- It's possible that SGPWA may forego taking delivery of Nickel water this year or discuss a banking arrangement with AVEK in regard to storing Nickel Water





And Lastly...

---



What if Brookside West were operational this year?

# Questions?

---