

# County Line Rd Recharge Update



# Discussion Topics



PROJECT OVERVIEW



MEMORANDUM OF  
UNDERSTANDING



FUTURE ACTIONS

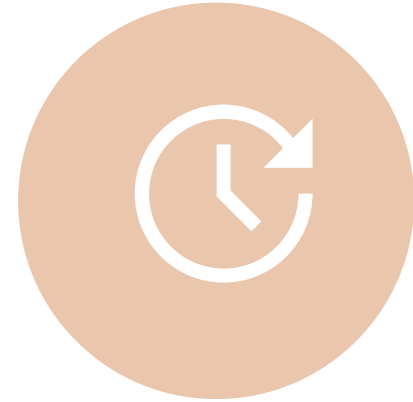
# Discussion Topics



PROJECT OVERVIEW



MEMORANDUM OF  
UNDERSTANDING

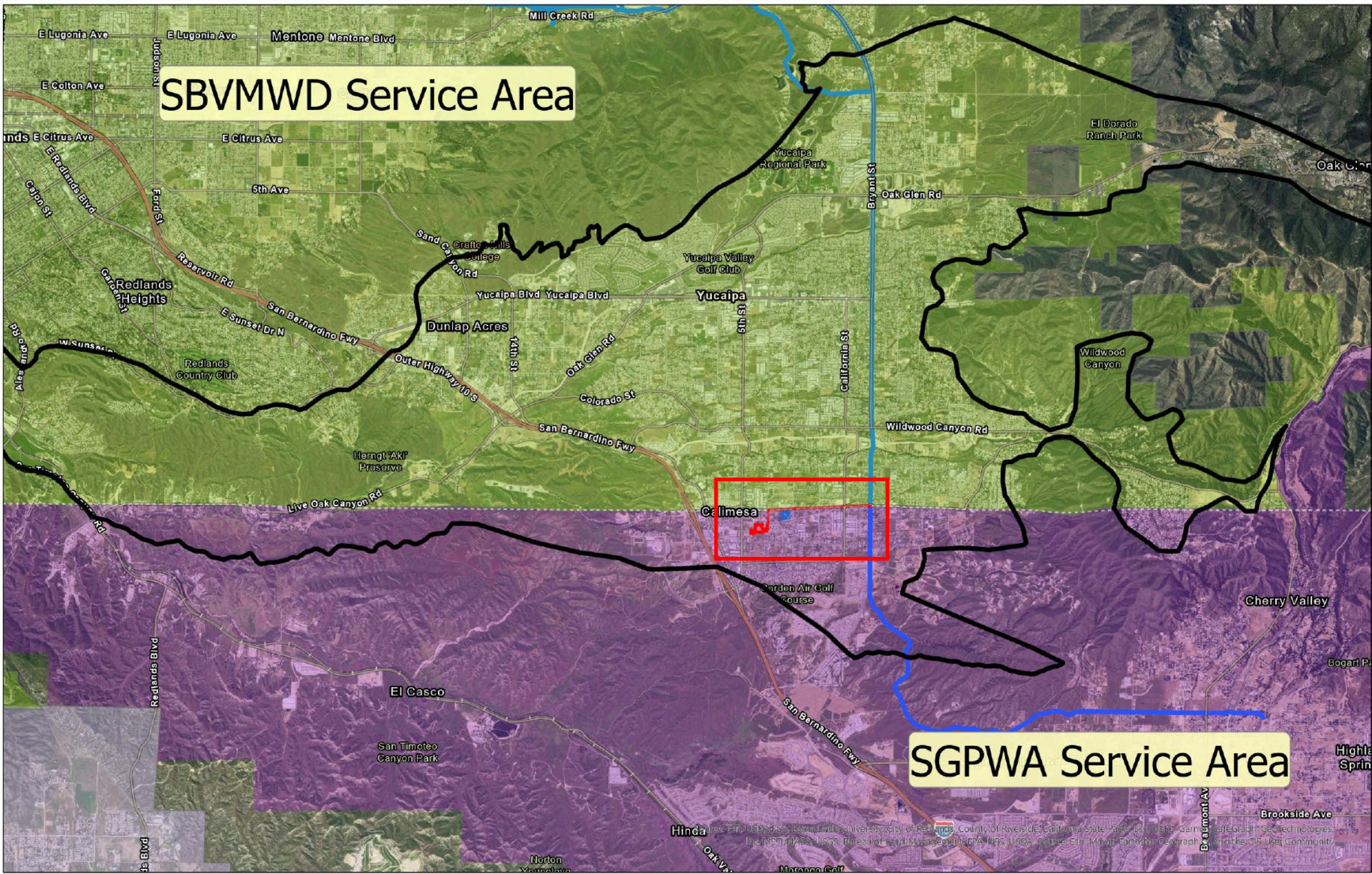


FUTURE ACTIONS



# SBVMWD Service Area

# SGPWA Service Area



Calimesa

Map Data: Esri, USGS, NOAA, TerraMetrics, City of Redlands, County of Riverside, California State Parks, Esri, HERE, Garmin, Swatch, Sourcegraph, GeoTechnology, and the GIS User Community







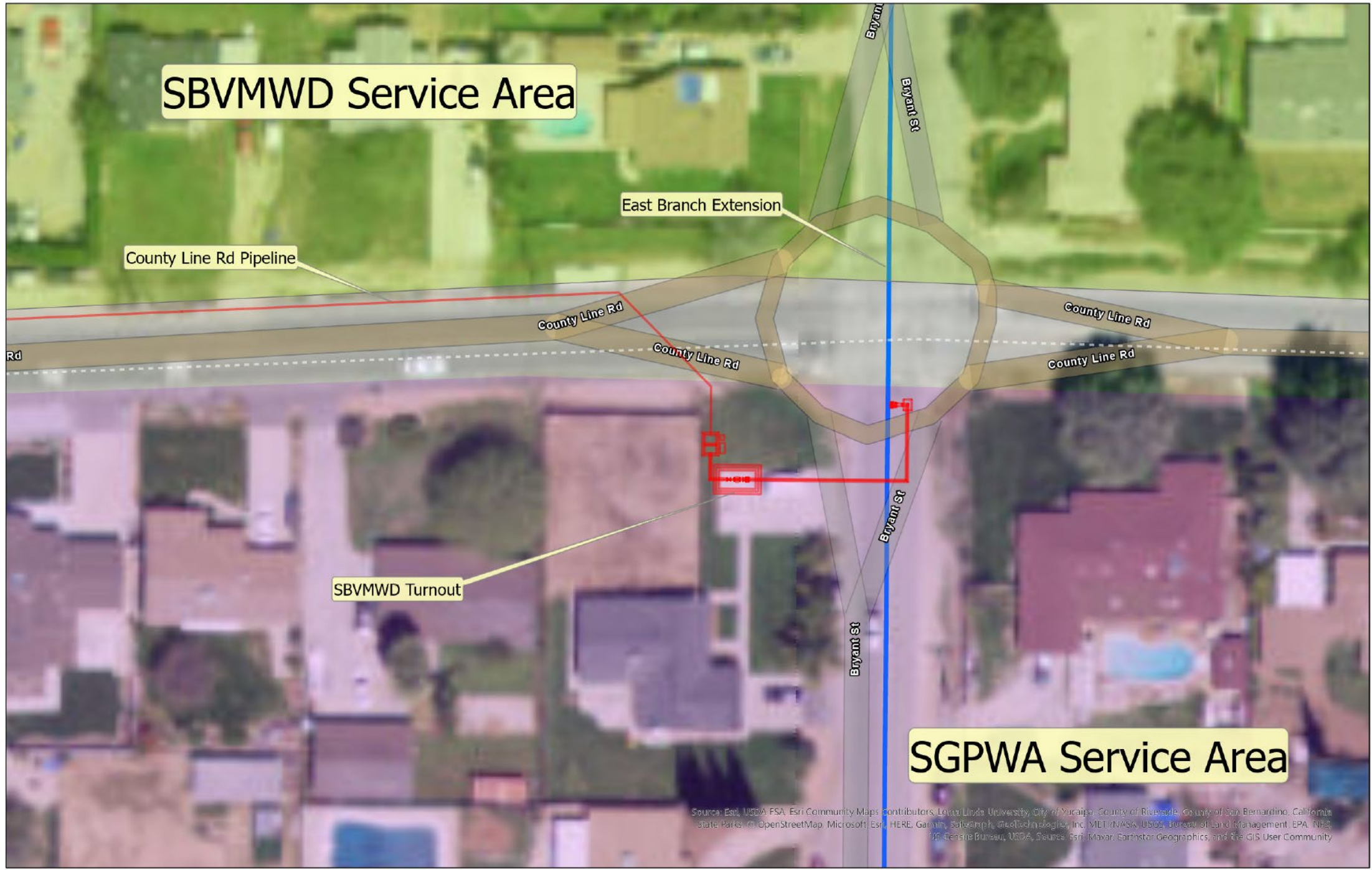
# SBVMWD Service Area

# SGPWA Service Area

County Line Rd Pipeline

East Branch Extension

SBVMWD Turnout



Source: Esri, USDA FSA, Esri Community Maps contributors, Iowa Linda University, City of Yucaipa, County of Riverside, County of San Bernardino, California State Parks, © OpenStreetMap, Microsoft, Esri, HERE, Garmin, Swisstopo, @401technologies, Inc, METI/NASA, USGS, Bureau of Land Management, EPA, NPS, US Census Bureau, USDA, Source: Esri, Maxar, Earthstar Geographics, and the GIS User Community



# SBVMWD Service Area

County Line Rd  
5th St

4th St

Turner Ln

3rd St

County Line Rd Pipeline

County Line Rd

7th St

Potential Flood Control Property

Rogers Ct

SGPWA 4th St. Property

Buena Vista Ct

4th St

# SGPWA Service Area

Source: Esri, USDA, Esri Community Maps Contributors, Landsat, University, City of Berkeley, City of Modesto, County of Riverside, County of San Bernardino, California State Parks, OpenStreetMap, Microsoft, Esri, HERE, Garmin, SafeGraph, GeoTechnologies, Inc., Mapbox, USGS, Bureau of Land Management, EPA, NPS, US Census Bureau, USDA, Sources: Esri, Maxar, Earthstar Geographics, and the GIS User Community



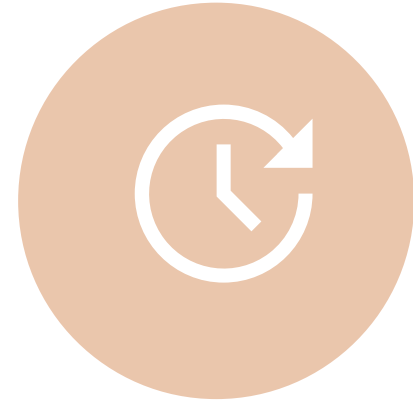
# Discussion Topics



PROJECT OVERVIEW



MEMORANDUM OF  
UNDERSTANDING



FUTURE ACTIONS





**SAN BERNARDINO**  
**VALLEY** | A REGIONAL WATER  
AGENCY SINCE 1954

## Turnout

- Design (Heading towards final design)
- Construction
  - (work within ROW may be in conjunction with SMWC's pipeline construction)
- Coordination with DWR
- Easement acquisition with assistance by SGPWA and SMWC (Acquired)
- Operation and Maintenance: Valley District will operate and maintain the turnout in coordination with Pass Agency and South Mesa Water Company

## Grant Application

- Identifying and pursuing possible grant opportunities on behalf of the project partners (Grant Submitted in 2022)
- Grant administration if successful





### Pipeline

- Replace ~6,000 linear feet of 14-in steel pipeline as conveyance of the recharge water (Project going out to bid this month)
- Work with SGPWA to repurpose pipeline for raw water





### **Environmental Documentation (CEQA)**

- Cover the entire project, including the Turnout, repurposed and new pipelines, basins, and associated appurtenances (Anticipated on starting within a month)

### **Pipeline**

- Work with SMWC to repurpose pipeline for raw water conveyance

### **Pipeline extension**

- Design and construct pipeline extension on Fourth Street (Heading towards 90% design)

### **Recharge Basin**

- Land acquisition (Acquired)
- Design and construction of the recharge basin (Heading towards 90% design)
- Operation and maintenance: Pass Agency will operate and maintain the basin in coordination with Valley District and South Mesa Water Company



# Discussion Topics



PROJECT OVERVIEW



MEMORANDUM OF  
UNDERSTANDING



FUTURE ACTIONS

# Future Actions

- Respective members to work on their parts.
- Coordinate funding.
- The member Boards will need to coordinate various agreements, policies, and partnership elements as the project progresses.
- The project has an aggressive schedule to align with County Line Rd. improvements, other awarded grants, and upcoming grant opportunities.