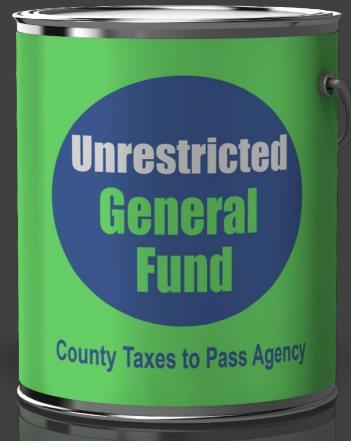




State Water Project Energy Cost Discussion

Background



It takes a lot of energy to move water over 500 miles from Sacramento to the Pass Region

The energy costs are known as “variable costs”

The variable cost changes each year based on how much water is being moved statewide

Energy Costs are made up of fixed and variable costs

The energy cost primarily comes from pump stations. This includes:

- Banks Pumping Plant
- Wind Gap Pumping Plant
- Edmonston Pumping Plant
- Peablossom Pumping Plant
- Cherry Valley Pumping Plant

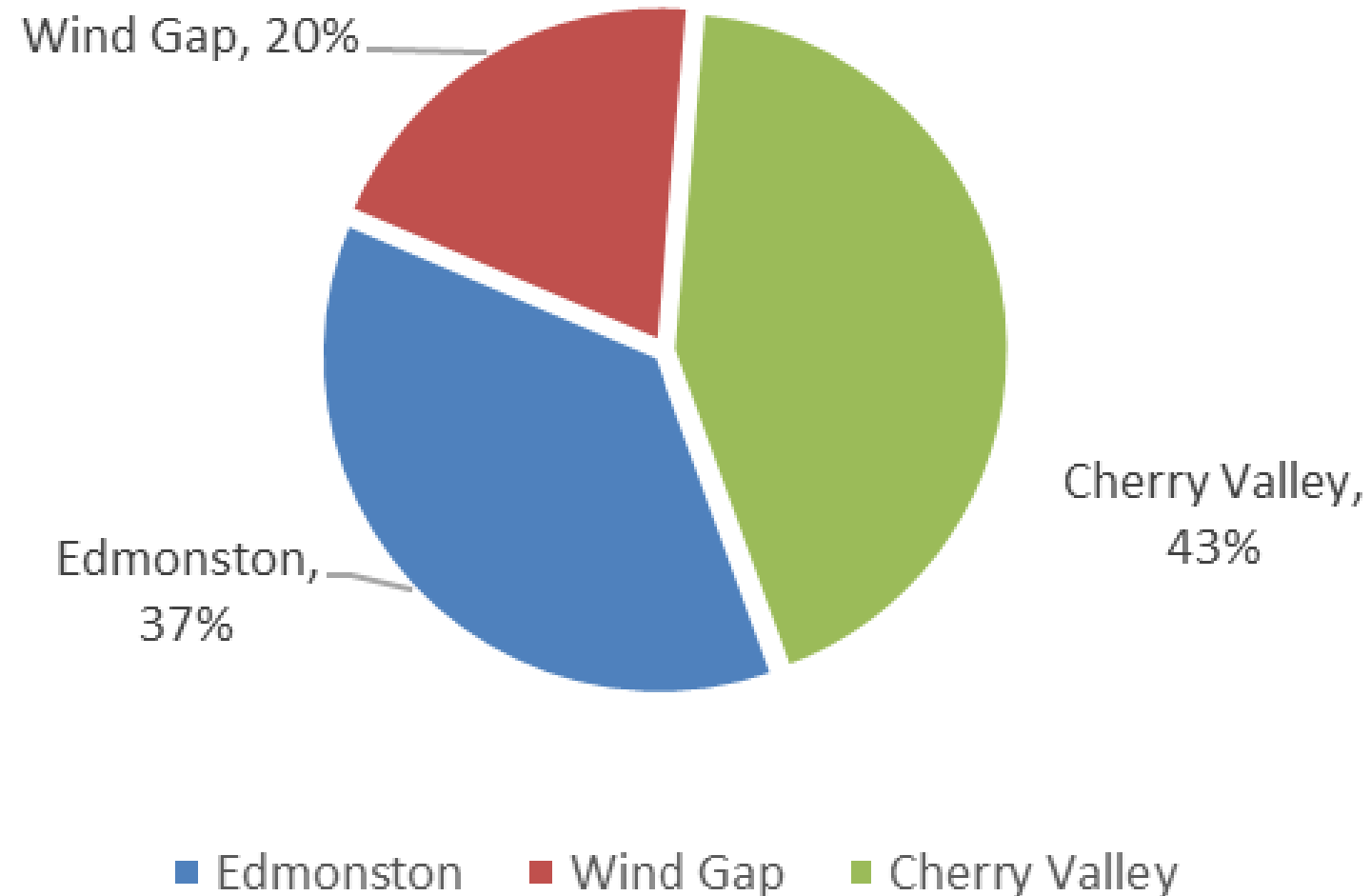


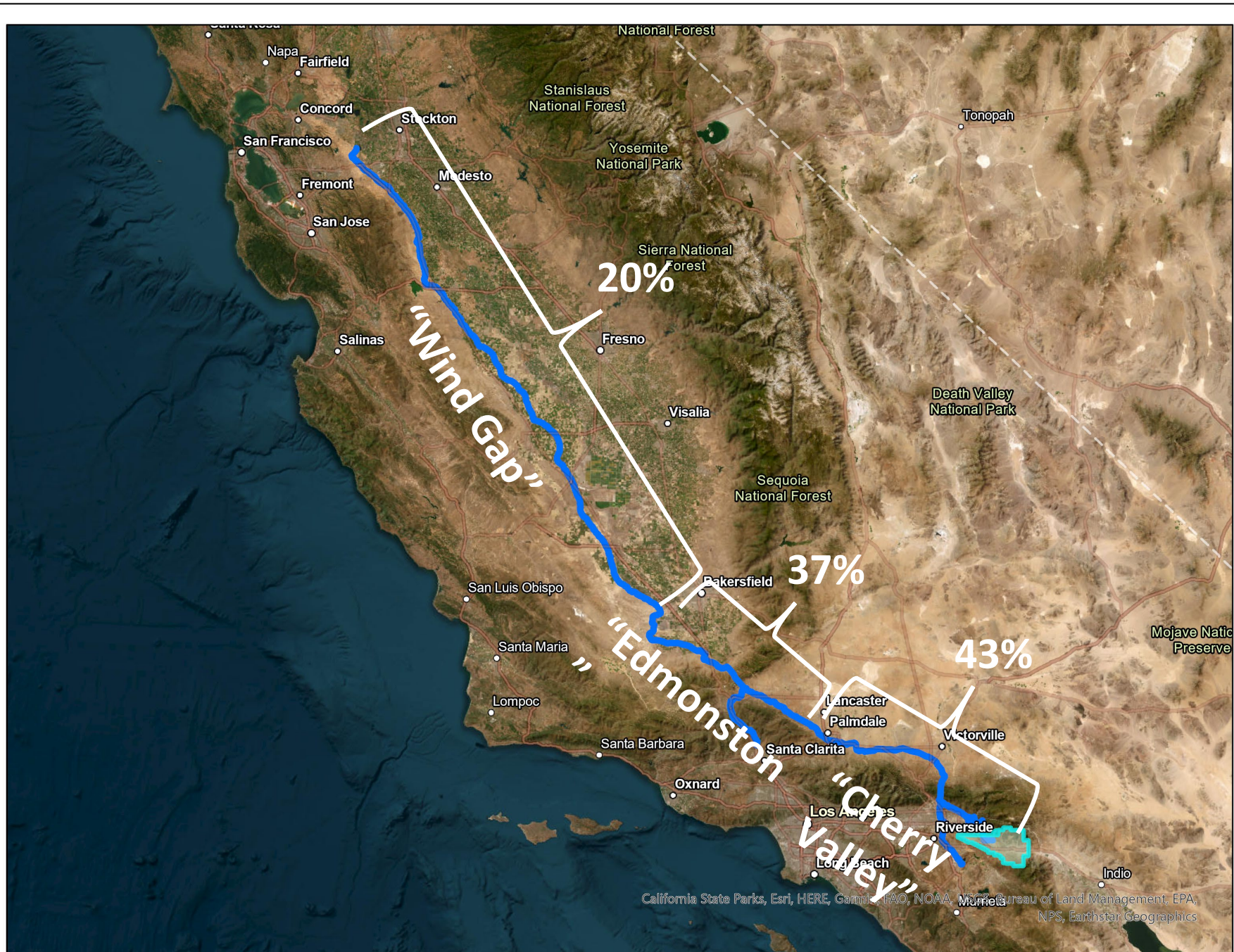


Energy can be recovered at power plants such as at:

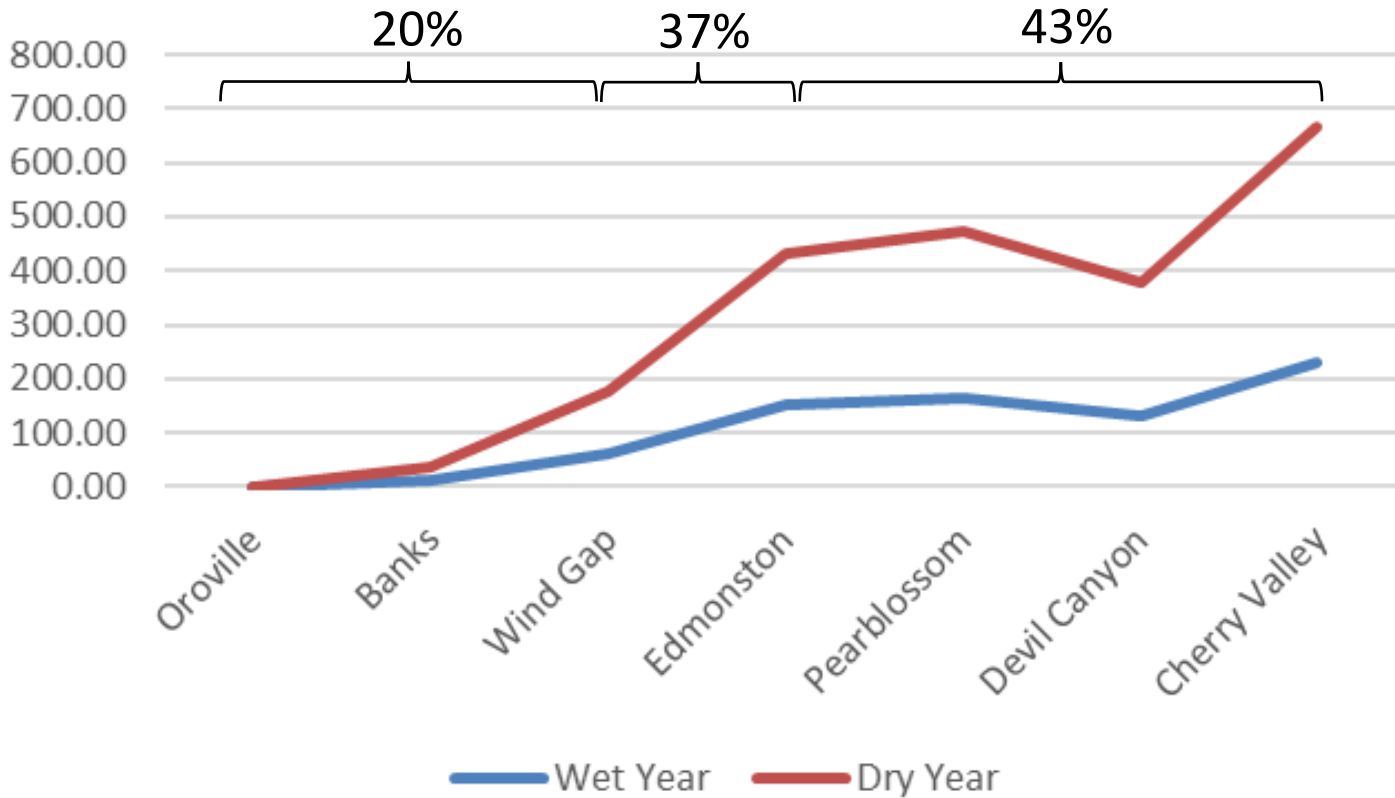
- Devils Canyon Power Plant

Percentage of Variable Costs by Location





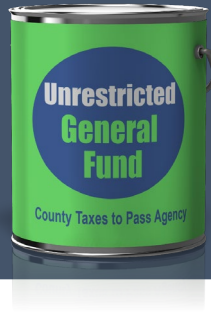
Dry Year vs. Wet Year Cost Comparison



Wet year energy costs are substantially less than dry years

- Dry Year = \$667/AF (2022 – 5%)
- Wet Year = \$231/AF (2017 – 85%)
- Difference = \$436/AF (3x)

Takeaways



Energy costs are synonymous with “Variable Cost”



Edmonston Pumping Plant makes up about 37% of our total energy cost



Energy costs are lower during wet years because of increased hydroelectric energy generation



Dry year energy costs are higher than wet year energy costs