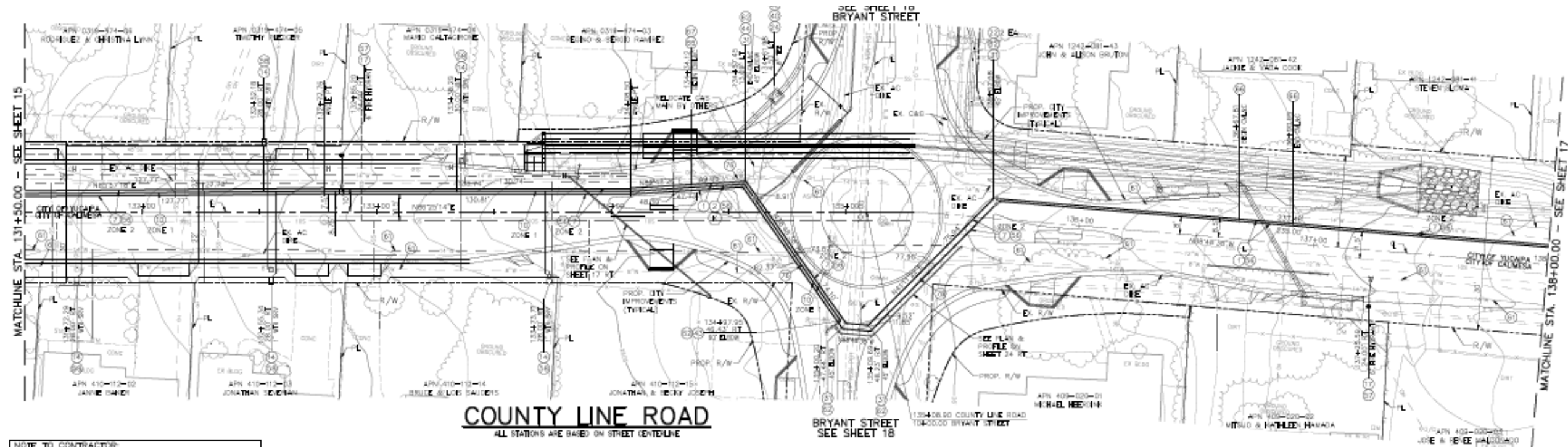


County Line Recharge Basin

Conceptual Roles & Responsibilities



NOTE TO CONTRACTOR:
 ALL EXISTING PAVEMENT MARKINGS, STRIPING & SIGNS AFFECTED AS A RESULT OF WORK PERFORMED FOR THIS PROJECT, SHALL BE REPLACED IN THE LINE KIND TO THE SATISFACTION OF THE CITY OF YUCAIPA OR CAJUMA INSPECTOR.

CONSTRUCTION NOTES:

- 1) INSTALL 16" DULAC CLASS 200 PIPE PER JOINT TRENCH DETAIL ON SHEET 28.
- 2) INSTALL 8" CALMAC CLASS 200 PIPE PER JOINT TRENCH DETAIL ON SHEET 28.
- 3) INSTALL 16" PVC D-300 DR-14 PIPE PER JOINT TRENCH DETAIL ON SHEET 28.
- 4) INSTALL 8" PVC C-300 DR-14 PIPE PER JOINT TRENCH DETAIL ON SHEET 28.
- 5) RELocate SERVICE LINE & CONNECT TO RELOCATED METER PER SMWC STD. W-4B.
- 6) INSTALL 8" DRY BARREL FIRE HYDRANT ASSEMBLY PER SMWC STD. W-6.
- 7) INSTALL 16" BUTTERFLY VALVE PER SMWC STD. W-10 & W-11.
- 8) INSTALL 8" GATE VALVE PER SMWC STD. W-9 & W-11.
- 9) INSTALL 16" 45" ELBOW.
- 10) INSTALL 8" TEE.
- 11) INSTALL 8" 90° ELBOW.
- 12) INSTALL 8" 45° ELBOW.
- 13) REPAIR JOINT TRENCH PER TRENCH REPAIR DETAIL AND JOINT TRENCH DIMENSION DETAIL ON SHEET 28.
- 14) REPAIR TRENCH FOR WATER MAINS AND APPURTENANCES PER TRENCH REPAIR DETAIL ON SHEET 28.
- 15) REPAIR TRENCH FOR WATER SERVICES AND AIR VACS PER TRENCH REPAIR DETAIL ON SHEET 28.
- 16) ABANDON EXISTING PIPELINE IN PLACE PER SMWC & GREENBOOK STD'S.
- 17) INSTALL THRUST BLOCKS PER SMWC STD. W-12.
- 18) CONSTRUCT SLURRY PROTECTION AT CROSSINGS PER DETAILS SHEET 27.
- 19) INSTALL 16" FUG X MJ ADAPTER.
- 20) INSTALL 8" FUG X MJ ADAPTER.
- 21) RELocate EXISTING A.C. ONE TO MATCH EXISTING.

LINE TABLE		
LINE	LENGTH	BEARING
L30	7.25	N81°12'22"E

Underground Service Alert
 of Southern California
 CALL BEFORE YOU DIG
 CALL-TOLL-FREE
 1-800-227-2500
 The Working Day Before The Dig

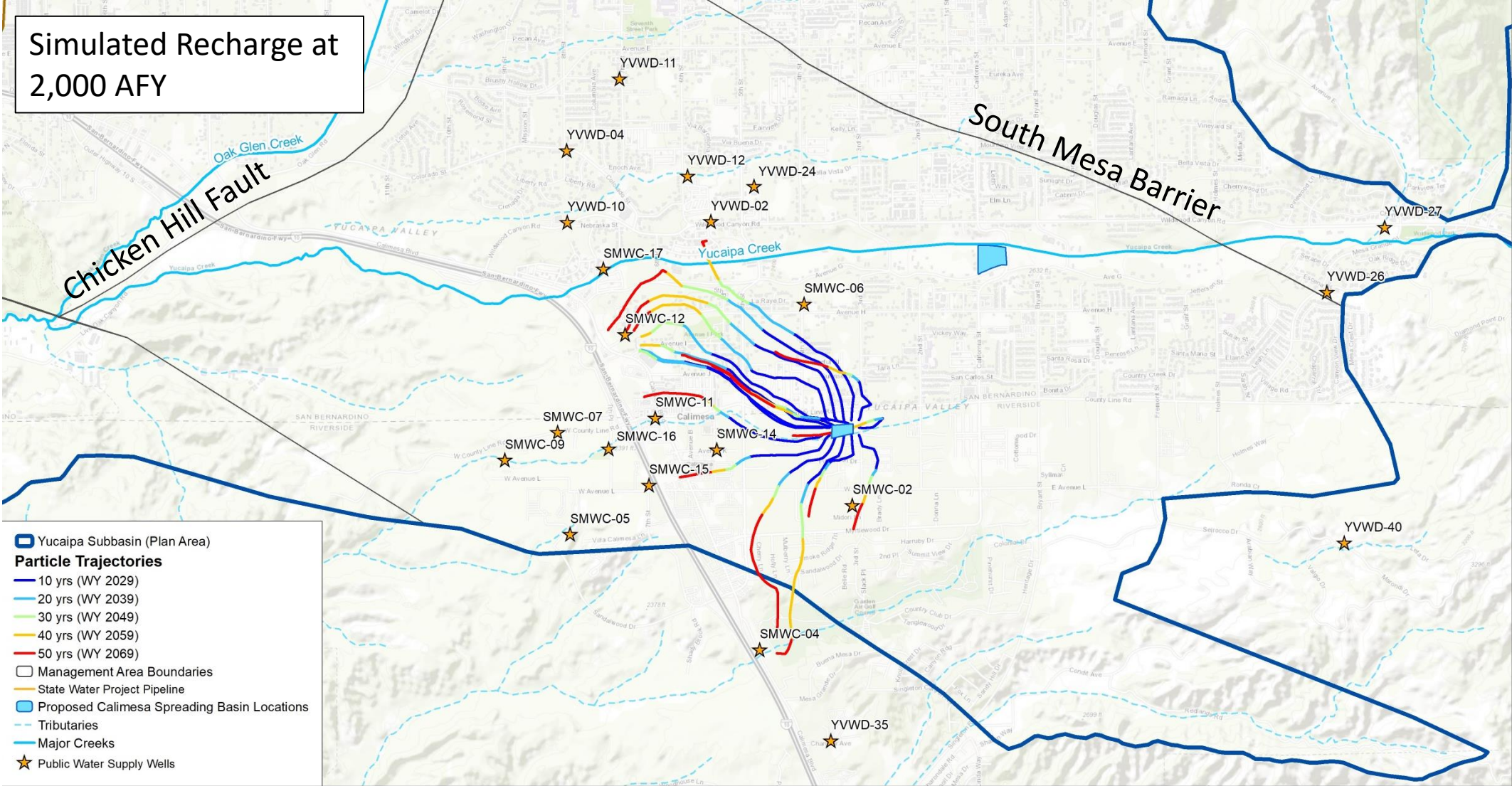


SCALE: 1"=20'



PRESSURE ZONE

Simulated Groundwater Flow from Potential County Line Basin

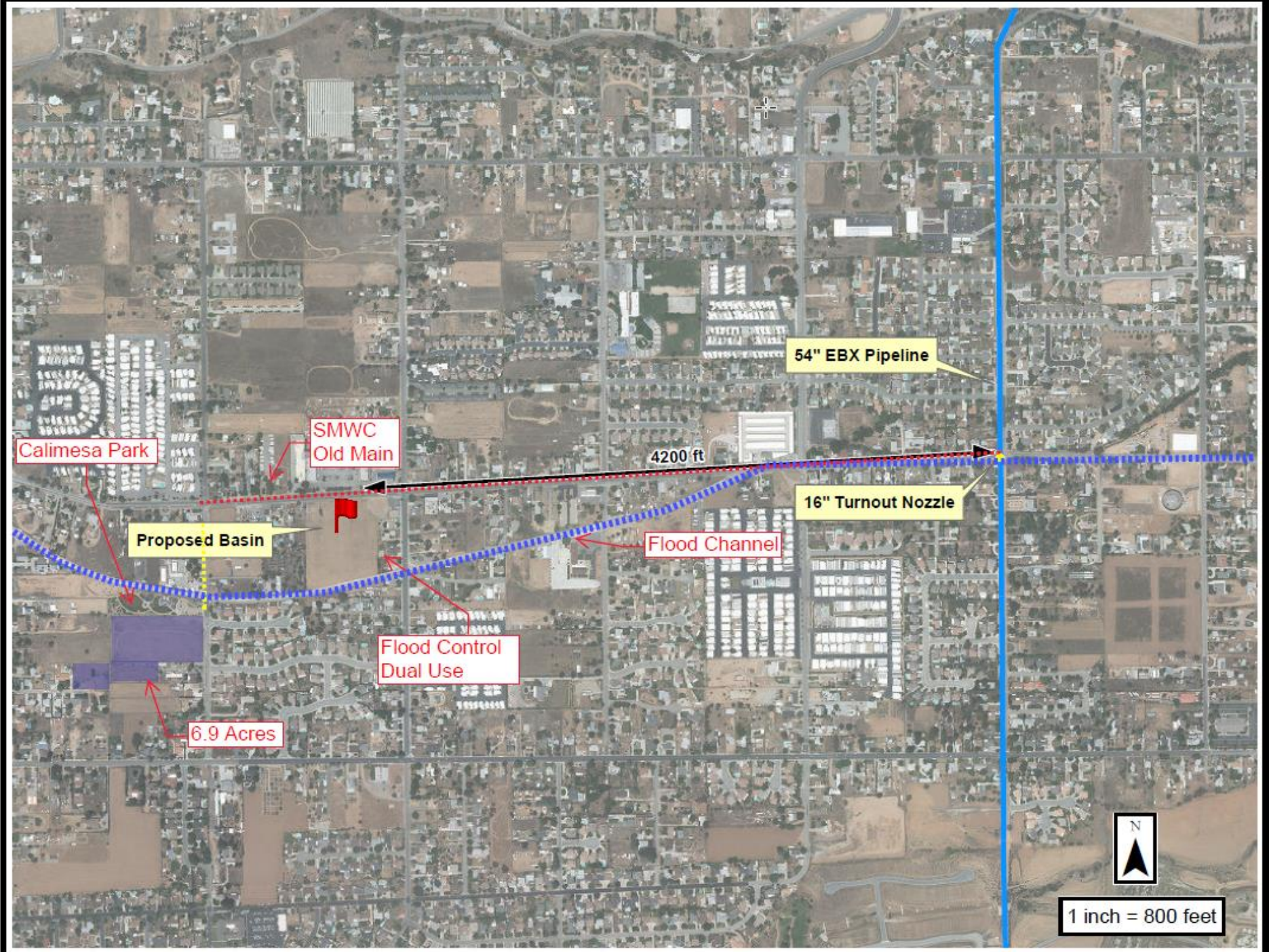


SOURCE: DWR



DRAFT

POTENTIAL FUTURE SPREADING SCENARIOS
 Particle Trajectories: 2,000 AFY at Potential County Line Basin



Calimesa Park

SMWC
Old Main

54" EBX Pipeline

4200 ft

Proposed Basin

16" Turnout Nozzle

Flood Channel

Flood Control
Dual Use

6.9 Acres



1 inch = 800 feet



Turnout

- Design
- Construction
 - (work within ROW may be in conjunction with SMWC's pipeline construction)
- Coordination with DWR
- Easement acquisition with assistance by SGPWA and SMWC
- Operation and Maintenance: Valley District will operate and maintain the turnout in coordination with Pass Agency and South Mesa

Grant Application

- Identifying and pursuing possible grant opportunities on behalf of the project partners
- Grant administration if successful



Pipeline

- Repurposing ~6,000 linear feet of 14-in steel pipeline as conveyance of the recharge water
- Operation and Maintenance: TBD

Recharge Basin

- Maintenance: SMWC will maintain recharge basins: TBD



Environmental Documentation (CEQA)

- Cover the entire project, including the Turnout, repurposed and new pipelines, basins, and associated appurtenances

Pipeline extension

- Design and construct pipeline extension on Fourth Street
- Operation and Maintenance: TBD

Recharge Basin

- Land acquisition (Done)
- Design and construction of the recharge basin
- Operation: Pass Agency will operate the basin in coordination with Valley District and South Mesa: TBD

Future Actions

- Respective members to work on their parts.
- Coordinate funding.
 - *Local match, grant proceeds, and proportional shares will need to be established.*
- The member Boards will need to coordinate various agreements, policies, and partnership elements as the project progresses.
- The project has an aggressive schedule to align with County Line Rd. improvements, other awarded grants, and upcoming grant opportunities.