

# Water Conditions Update



SGPWA Workshop  
August 15, 2022

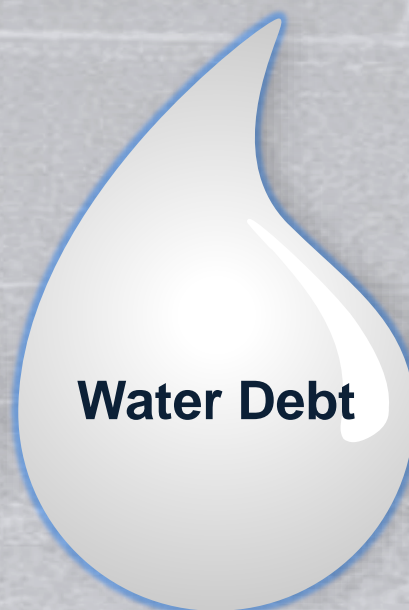
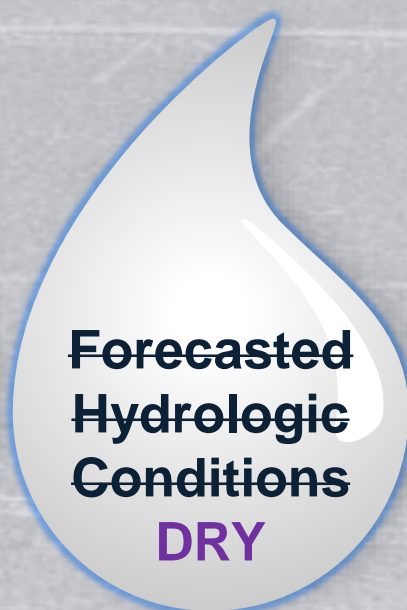


# Water Conditions Update



SGPWA Workshop  
August 15, 2022





## Discussion



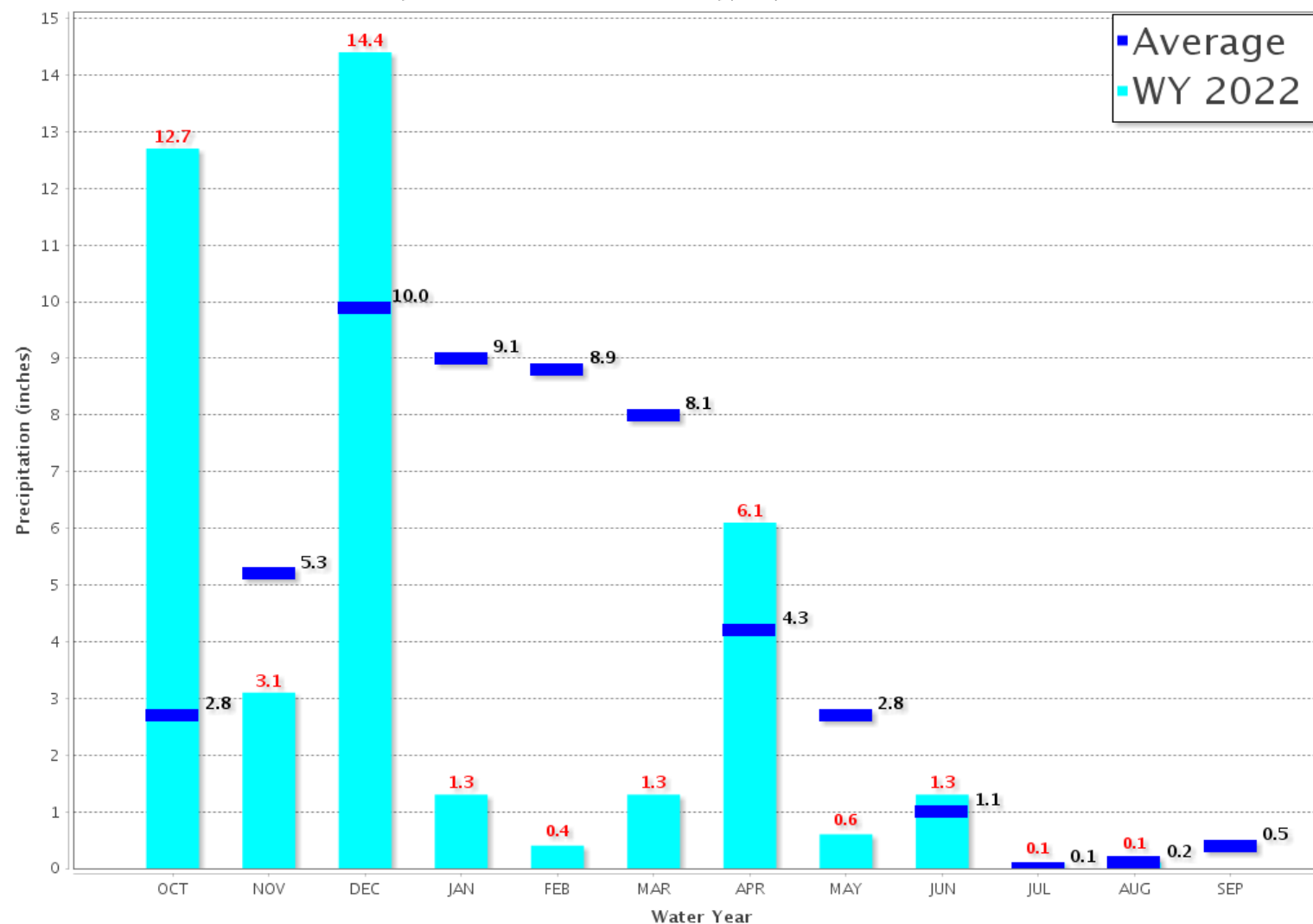


## Northern Sierra 8-Station

Precipitation Index for Water Year 2022 – Updated on August 10, 2022 12:48 PM

Note: Monthly totals may not add up to seasonal total because of rounding

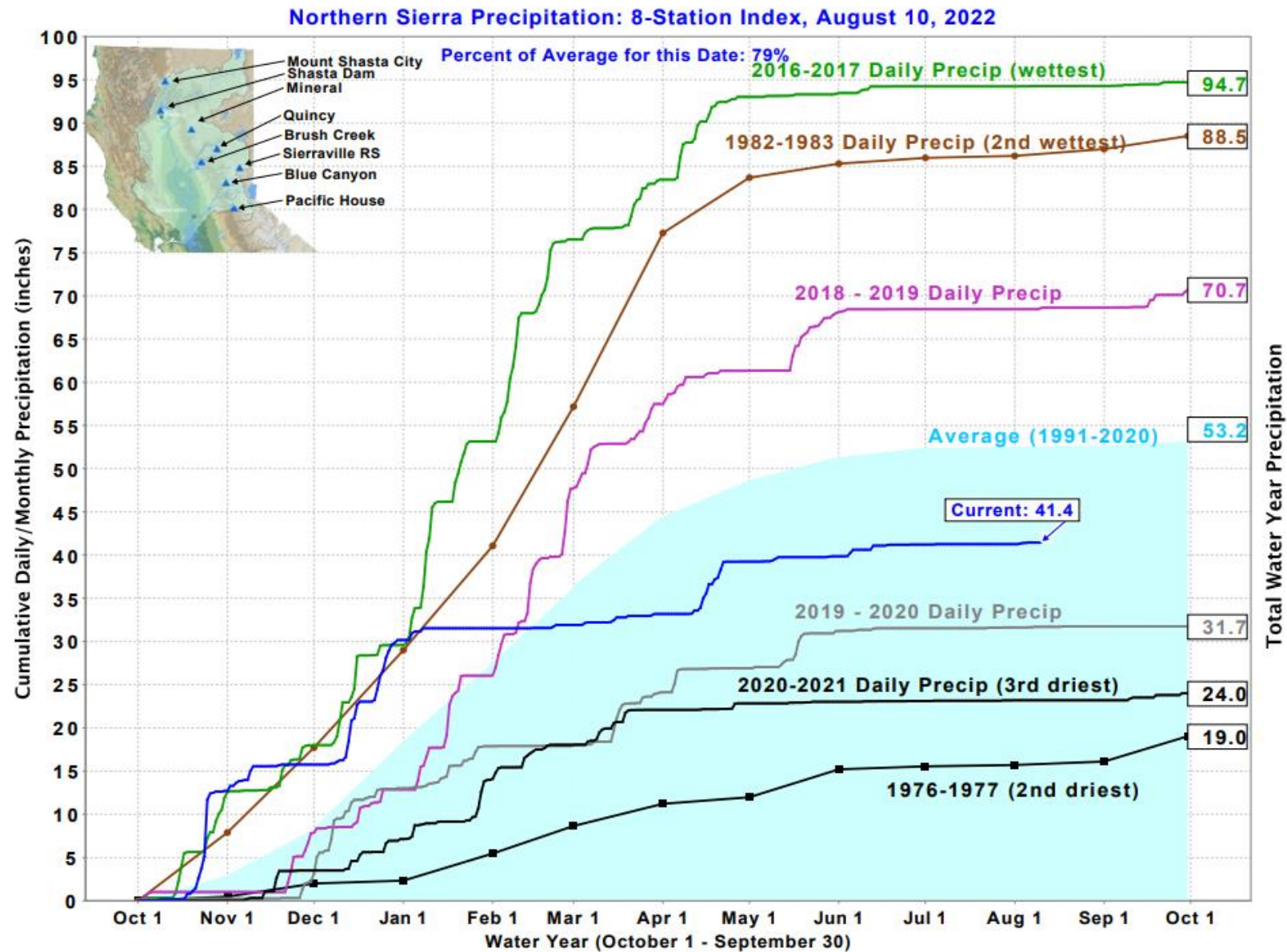
Water Year Monthly totals are calculated based on Daily precipitation data from 12am to 12am PST



# State Precipitation Stations







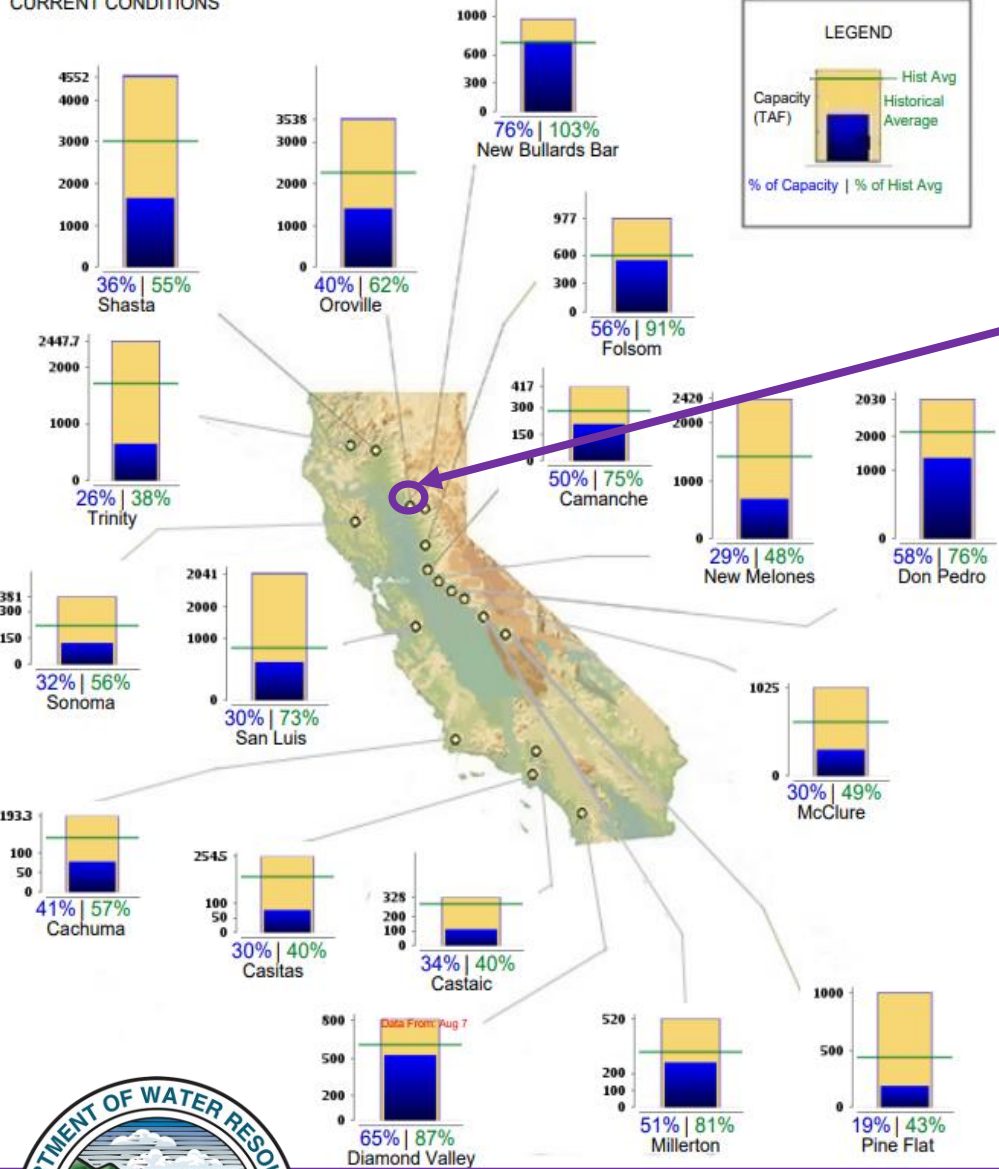
# State Precipitation Stations



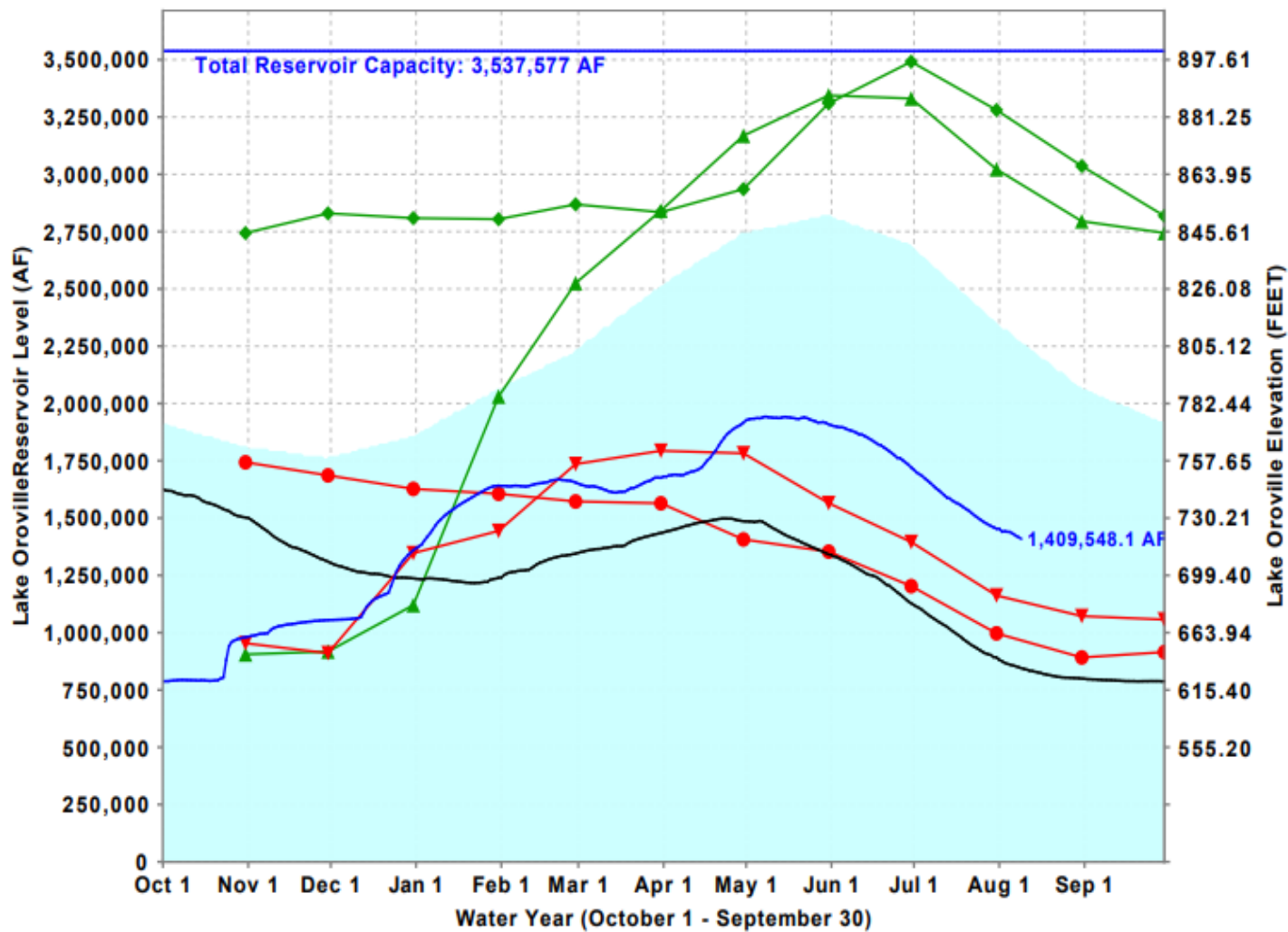
# CALIFORNIA MAJOR WATER SUPPLY RESERVOIRS

CURRENT CONDITIONS

Midnight - August 9, 2022



## Lake Oroville Levels: Various Past Water Years and Current Water Year, Ending At Midnight August 9, 2022



## Reservoir Levels

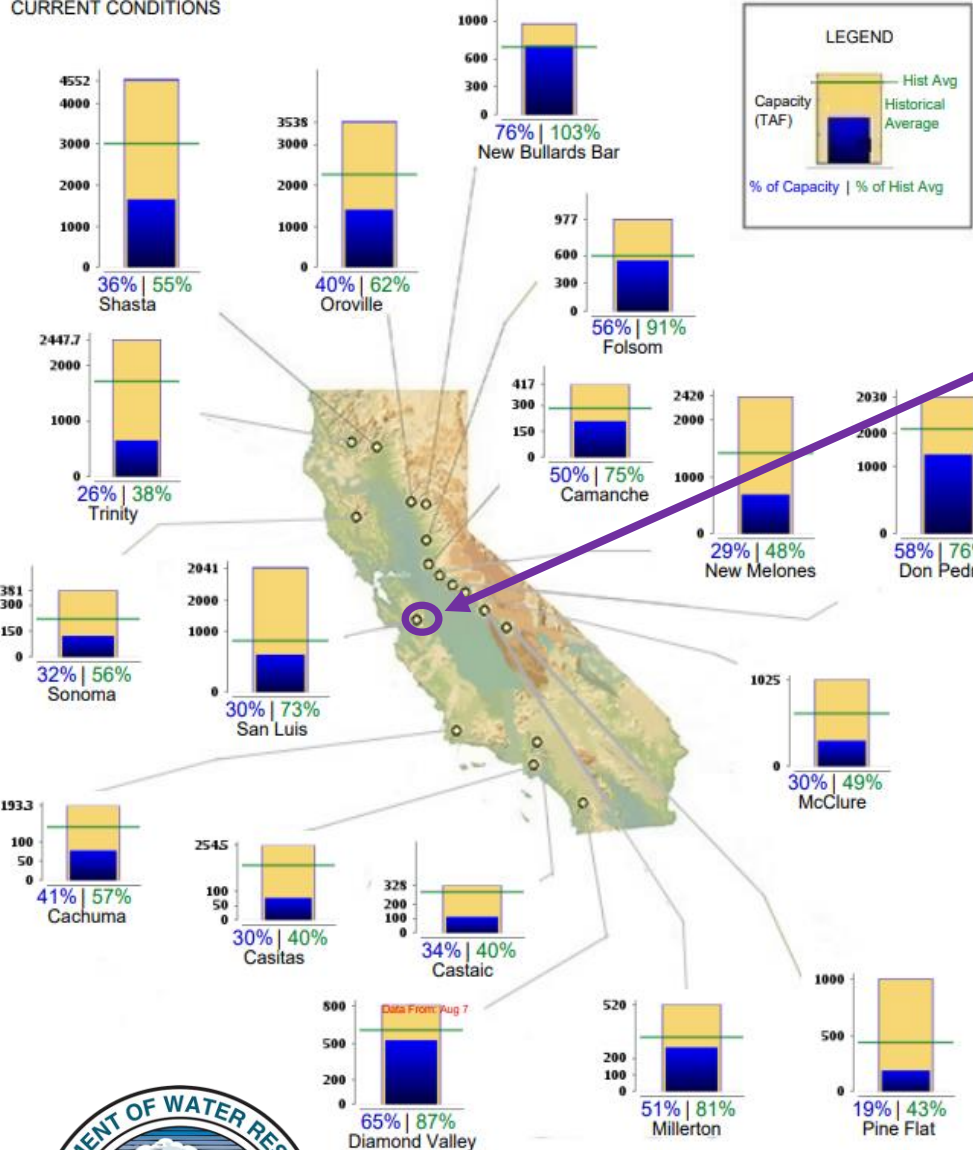




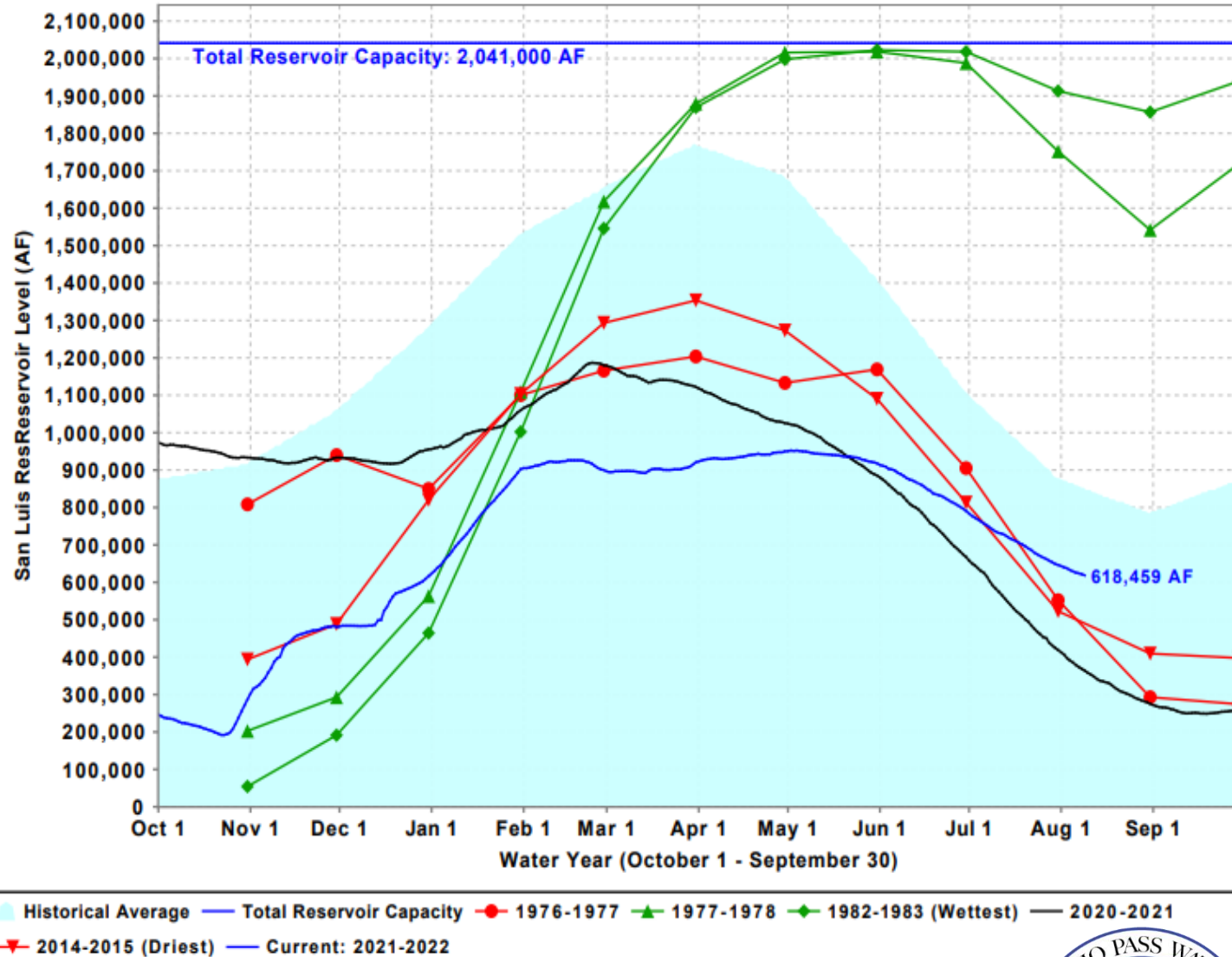
# CALIFORNIA MAJOR WATER SUPPLY RESERVOIRS

## CURRENT CONDITIONS

Midnight - August 9, 2022



# San Luis Res Levels: Various Past Water Years and Current Water Year, Ending At Midnight August 9, 2022



## Reservoir Levels



Outstanding Water Owed	Volume
CLAWA	2,900
Ventura	2,575
Casitas	1,275
<b><i>TOTAL</i></b>	<b><i>4,175*</i></b>

\*Does not include 2,575 AF for Ventura, Outstanding Exchange Water is expected to be part of a 20-year agreement.



## Water Debt (acre-feet)



Agency	Year	Allocation	Received	Debt	Returned	Balance	Due By
<b>CLAWA</b>	2010	50%	1,000	1,000	1,000	0	2020
CLAWA	2013	35%	2,000	1,300	0	1,300	2023
<b>CLAWA</b>	2016	60%	1,200	600	0	600	2026
<b>CLAWA</b>	2017	85%	2,000	1,000	0	1,000	2027
Ventura	2018	35%	3,500	1,400	0	1,400	2028
<b>Casitas</b>	2018	35%	1,750	700	0	700	2028
Ventura	2019	75%	1,350	675	0	675	2029
<b>Casitas</b>	2019	75%	650	325	0	325	2029
Ventura	2020	20%	2,000	500	0	500	2030
<b>Casitas</b>	2020	20%	1,000	250	0	250	2030
<b>Ventura</b>	2021	5%	500	0	NA	NA	NA

CLAWA ~~is~~ **was** requesting some water this year



## Water Debt (acre-feet)

## Total Current Requests: 18,000 AF



### BCVWD

- 16,900 AF
  - 10,900 AF (*Demands*)
  - 6,000 AF (*Banking*)



### YVWD

- 900 AF



### City of Banning

- 200 AF



### SGPWA

- TBD (Future Supply)



### Portfolio

Nickel Water

Pass Table A

Carry-Over

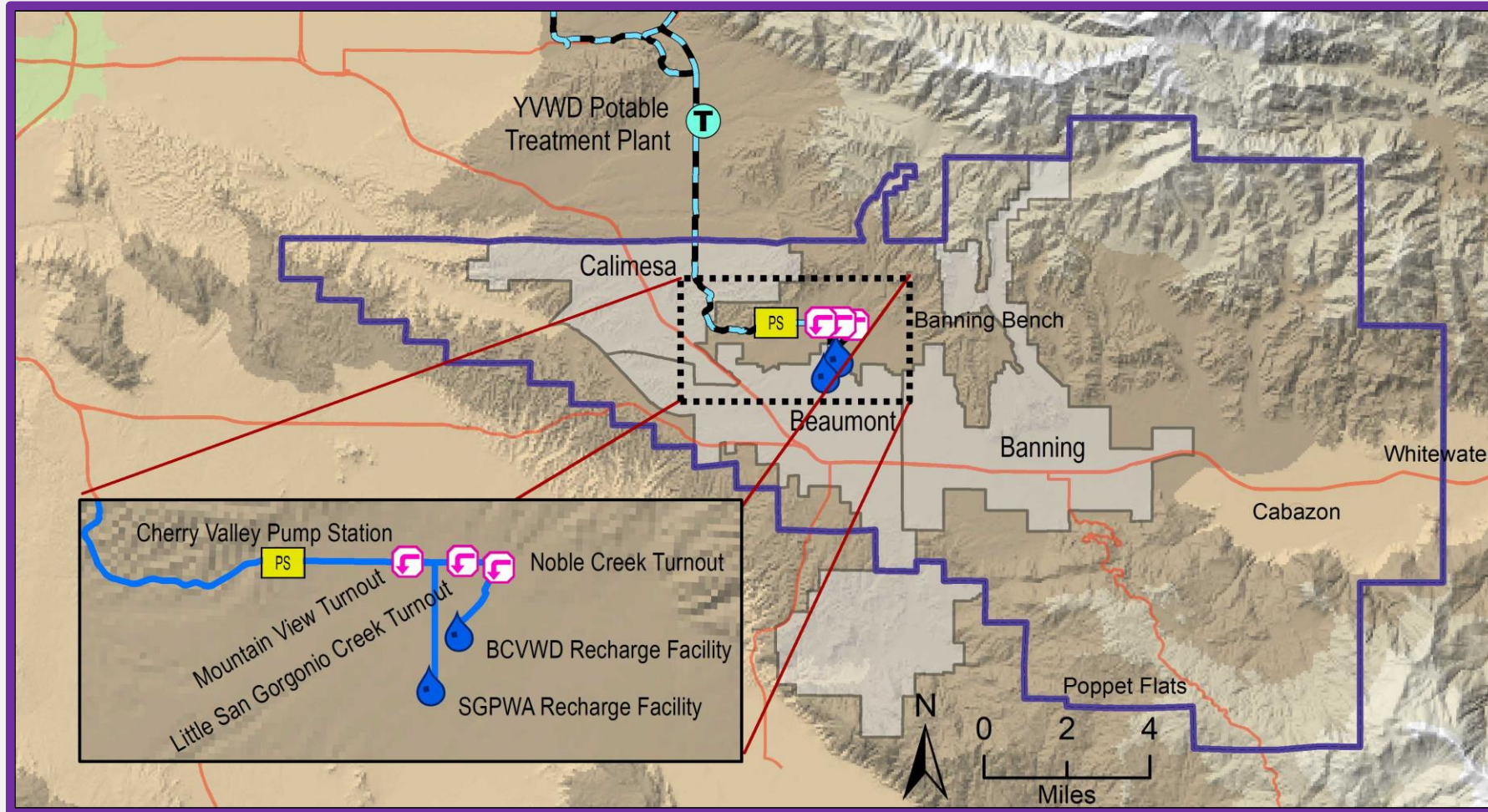
Other Table A?

Yuba Water

Beaumont Storage

# Water Order 2022





	Jan	Feb	Mar	Apr	May	Jun	Jul	Aug	Sept	Oct	Nov	Dec	Total
Recharge	0	0	382	0	0	0							382
Direct	6	0	0	0	40	0							46

\*Estimated  
\*From Local Storage



# Local Deliveries 2022 (acre-feet)

Subject to Final Verification