

SAN GORGONIO FLUME UPDATE

4.25.22



SOUTH FORK DIVERSION



RECAP

- San Geronio Flume (“Flume”) has delivered water since 1913.
- Diverts water from the East Fork and South Fork of the Whitewater River
 - Adjudicated water right of 13.26 cfs
- Primary source of water for Banning Heights Mutual Water Company (“BHMWC”)
- Unused water recharges Banning Water Canyon for City of Banning’s (“City”) use
 - Banning Water Canyon provides 30% of City’s supply
- Hydroelectric power added in 1923. Flume maintained by SCE and it’s predecessors ever since and overseen by FERC.
- SCE is attempting to surrender their FERC License and is obligated to restore the Flume prior to handing it back over to BHMWC and Banning.

EAST FORK DIVERSION



RECAP

- Negotiations over the Flume have continued for over the course of 20 + years.
- Much progress over the course of the past 3 years:
 - Improvement in communications with key players from all parties.
 - SCE commencement of design of Upper and Lower flowlines.
- And then.....

APPLE FIRE (July 31, 2020)



APPLE FIRE



APPLE FIRE



APPLE FIRE



APPLE FIRE



- Water has not been diverted to BHMWC and COB since 2020
- Consensus over urgency to restore water

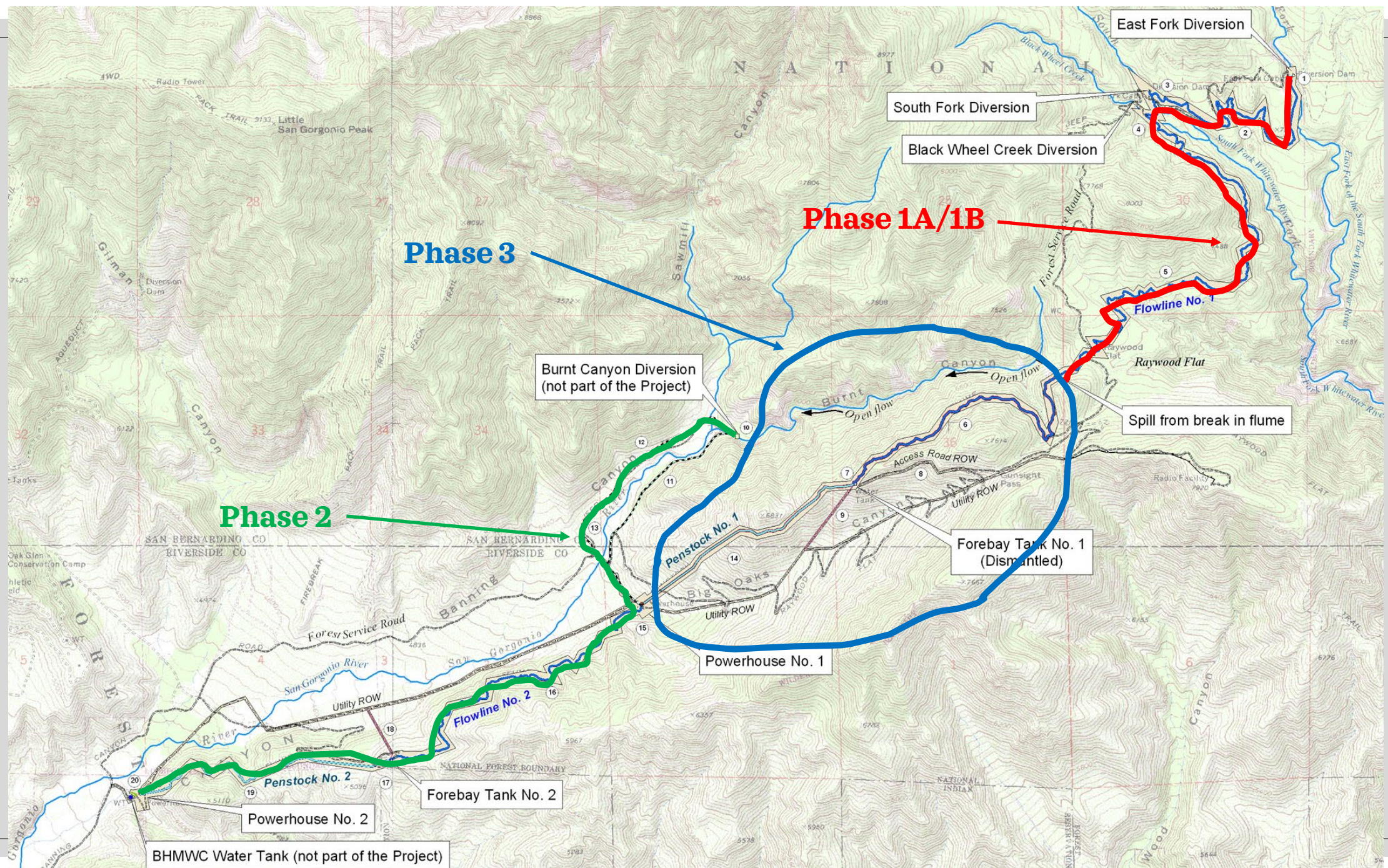
Activities Since Fire

Water Delivery Challenges

- City of Banning has been providing water from Banning Water Canyon Wells to BHMWC since the fire
- Only a few of the City's canyon wells are capable of providing water to BHMWC
- BHMWC community has stepped up and drastically reduced water demands to stretch out water supplies

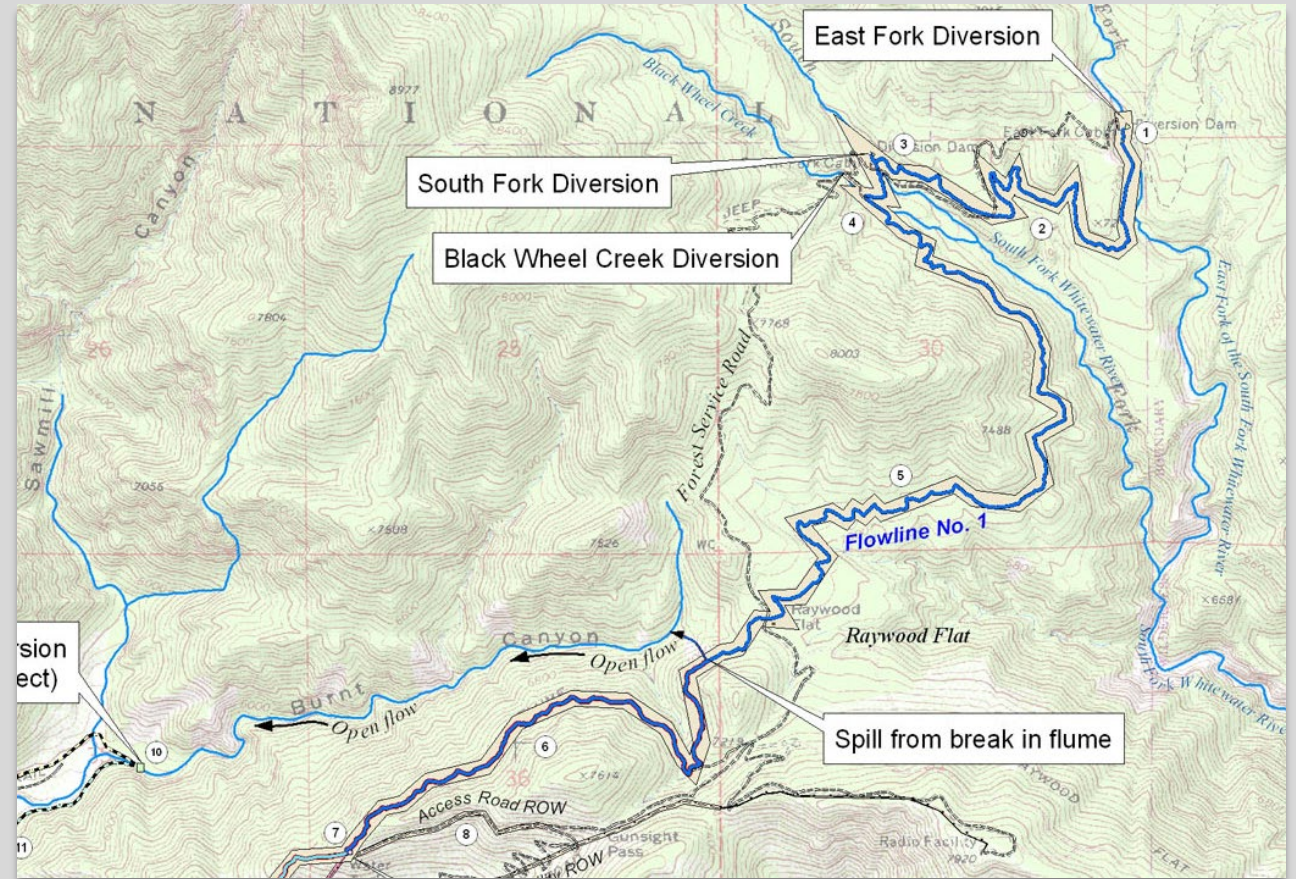
Progress on Restoring Water

- BHMWC, COB, SCE and USFS continued working on finalizing design for the upper flow line.
- Design for bottom flowline is well underway
- Options for middle portion (i.e. Burnt Canyon) have been discussed.



Current Activities

- SCE has hired a contractor to begin construction of Flow Line 1 (Phase 1A)
 - Under current FERC License
 - Gets water back into the Banning Water Canyon
 - Annual construction window:
 - April - December (weather permitting)



A scenic landscape featuring a calm body of water in the foreground, reflecting the sky and surrounding greenery. Two men stand on a concrete pier or dam structure in the middle ground. In the background, a dirt road winds through a rocky, hilly area with sparse vegetation, and a white car is visible on the road. The entire scene is framed by a thin white border.

THANK YOU!