

San Geronio Pass Water Agency

DATE: February 14, 2022

TO: Board of Directors

FROM: Lance Eckhart, General Manager

BY: Stephanie Smith (BB&K)

SUBJECT: Redistricting of Director Division Boundaries

RECOMMENDATION

The Board receive a presentation regarding potential redistricting of director divisions, review draft maps, and provide direct to the Agency's demographic consultant regarding proposed division boundary changes.

PREVIOUS CONSIDERATION

- October 25, 2021: Redistricting Kick-Off – The Board was informed of the process of redistricting. The Election Code requires: 1) population balance, and 2) compliance with the U.S. Constitution and the California Election Code. Agencies holding an election on Nov. 8, 2022 must adopt their maps no later than April 17, 2022.
- January 24, 2022: The Board heard a presentation on this matter at their January 24, 2022 meeting. Following the meeting, the Agency's redistricting consultant, Best Best & Krieger, prepared two draft maps for the Board's consideration. The maps are summarized below, with images and demographic analysis attached to this report. Further, an online tool may be accessed at the following link, with full search, zoom, and other geolocation services enabled.

BACKGROUND

Every ten years, agencies with by-district election systems must use new census data to review and, if needed, redraw electoral division lines to reflect how local populations have changed. This process, called redistricting, ensures all divisions comply with both the California and federal Voting Rights Acts. Requirements for redistricting are as follows:

- Revised electoral districts must be "substantially equal in population as required by U.S. Constitution."
 - Balance must comply with U.S. and California constitutions and the federal Voting Rights Act per United States Code Section 10301 of Title 52, as amended.
 - Population equality is based on total population of district residents, not customers, per the U.S. Census.
 - Incarcerated persons are only counted if the last known residence may be assigned to a city census block.
 - In adjusting the boundaries of the divisions, the Board may give consideration to the following factors:
 - Topography.
 - Geography.
 - Cohesiveness, contiguity, integrity and compactness of territory.
 - Community of interests of the division.

- This section does not apply to divisions in which only landowners vote for directors or whose directors are all elected at large or appointed.
- Boundaries shall not be drawn to favor or discriminate against a political party.
- Change in boundaries shall not affect the unexpired term of office of any elected board member.

Analysis of the Agency's current division boundaries, adjusted for the 2020 Census data, shows the divisions are no longer population-balanced.

Determining population balance is done by measuring the spread, or deviation, between the least populated division and the greatest populated division. Deviations of 10% or less are generally considered acceptable under U.S. Supreme Court rulings on the equal population standard under the U.S. Constitution.

The Agency's current division boundaries have been analyzed with the 2020 census data, and indicate the divisions are no longer population balanced. The Agency's population is 107,120. The ideal division population is one-fifth of that number, or 21,424. Division 2 is overpopulated by 2,911 persons (13.59%) while Division 4 is significantly underpopulated by 3,786 (-17.67%). Combined, these Divisions create a total deviation of 31.26%. As such, division boundaries must be adjusted to achieve population balance with a deviation less than 10%.

Another consideration is the distribution of minority voters throughout the Agency, and whether there is a possibility of creating a majority/minority voting district as addressed in the federal Voting Rights Act. This analysis involves reviewing the ethnicity demographics from the census data, specifically citizens of voting age populations (CVAP). Upon review of the Agency's CVAP data, creation of a majority/minority voting district (a division in which an identified minority comprises the majority of voting age population) is possible. Current Divisions 1 and 2 are drawn as majority/minority Hispanic voting divisions. Any revised map options should endeavor to preserve these majority/minority divisions.

The Board heard a presentation on this matter at their January 24, 2022 meeting. Following the meeting, the Agency's redistricting consultant, Best Best & Krieger, prepared two draft maps for the Board's consideration. The maps are summarized below, with images and demographic analysis attached to this report. Further, an online tool may be accessed at the following link, with full search, zoom, and other geolocation services enabled. This online link provides the best viewing of the proposed maps.

https://www.google.com/maps/d/u/0/viewer?mid=1NP7J2cmrU-k02vc_fw8218nKLGddFtA&ll=33.92949246287724%2C-116.99826054846797&z=12

Map Option 1

Option 1 is population balanced, with a deviation of 4.11%. This is accomplished by moving the population from the currently overpopulated Division 5 into the underpopulated Division 4, and from the overpopulated Division 2 into Division 1. Division 3 remains largely intact. All divisions retain the core of their existing boundaries, and the shifts are fairly minimal along the borders. While most of the population moves either have no impact or accelerate the

voting cycle for the residents, there is a small population of voters moving from Division 4 to 5 whose voting cycle will be deferred two years to 2024. The proposed map preserves Divisions 1 and 2 as majority/minority Hispanic voting divisions. A detailed demographic analysis is attached to this report.

Map Option 2

Option 2 is also population balanced, with a total deviation of 1.09%. This is accomplished by moving more significant populations throughout the Agency. The largest movement is from Division 4 to Division 5, resulting in a two-year deferment on the voting cycle for those residents. The proposed map preserves Division 1 as a majority/minority Hispanic voting district in terms of Voting Age Population (VAP) and CVAP. Division 2, however, represents a majority/minority Hispanic voting division in terms of VAP but not CVAP. While a majority/minority voting district is defined as a majority of the voting age population representing a specific minority, using the granular CVAP as a benchmark further enhances the Districts' compliance with the federal Voting Rights Act. A detailed demographic analysis is attached to this report.

At today's public hearing, the Board may hear written and oral testimony from community members regarding the proposed revisions to the division boundaries. Following the hearing, the Board may narrow its focus and select a preferred map for adoption at the second public hearing, scheduled for February 28, 2022. Alternatively, the Board may request revisions to the proposed maps for consideration at the second public hearing.

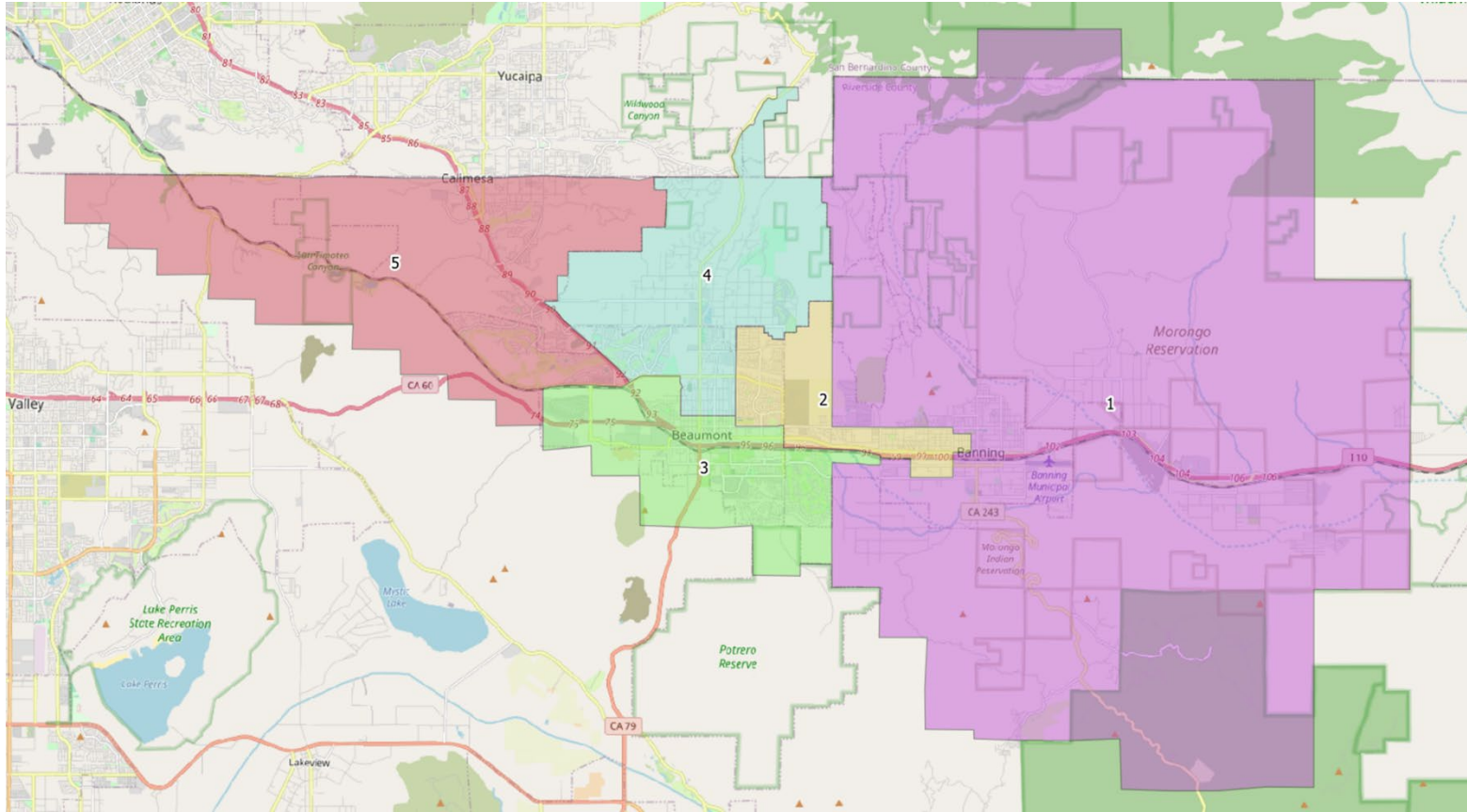
The deadline for the San Geronio Pass Water Agency to adopt revised division boundaries is April 17, 2022.

ACTION

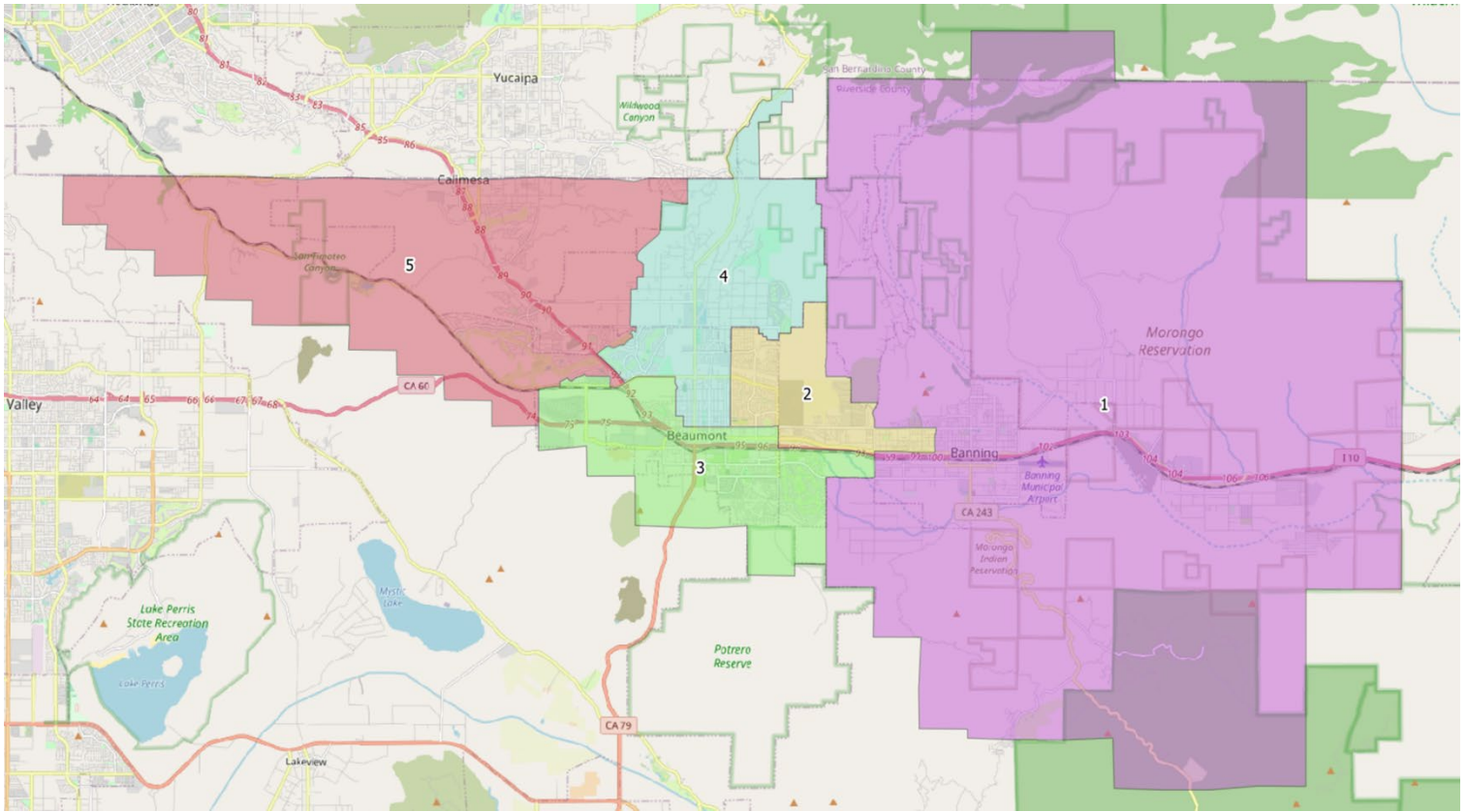
Following today's hearing, the Board may narrow its focus and select a preferred map for adoption at the second public hearing, scheduled for February 28, 2022. Alternatively, the Board may request revisions to the proposed maps for consideration at the second public hearing.

Attachment:
Map Options and Demographic Analysis

Map Option 1 with Demographic Analysis

[illegible]

Map Option 2 with Demographic Analysis



Division	Total Population	Raw Population	% Population	Latino	CVAP19 Total	CVAP19 NL White	CVAP19 NL Black	CVAP Hispanic	CVAP19 Not Hispanic	CVAP19 NL AIAN	CVAP19 NL ASIAN	CVAP19 NL Hawaiian	CVAP19 NL Other
1	21,436	12	0.05%	11,396	14,248	5,018	1,411	5,907	8,328	1,207	506	11	40
2	21,377	-47	-0.22%	9,385	12,614	4,881	1,376	4,836	7,715	141	971	24	12
3	21,389	-35	-0.17%	7,406	14,390	8,196	1,053	3,968	10,442	8	915	20	29
4	21,343	-81	-0.38%	8,557	15,156	8,199	951	5,390	9,805	76	525	-	5
5	21,577	153	0.71%	6,952	13,402	7,832	460	3,884	9,518	187	812	-	36
Total	107,122												
Ideal	21,424	Deviation	1.09%										
					Total VAP	Latino VAP	NL White Alone VAP	NL Black Alone VAP	NL AIAN Alone VAP	NL Asian Alone VAP	NL Hawaiian Alone VAP	NL Other Race Alone VAP	NL 2+ Races VAP
*CVAP =	Citizen Voting Age Population				15,994	7,942	4,565	1,409	655	812	15	79	518
**NL =	Non Latino				15,681	6,305	5,661	1,353	144	1,627	21	75	495
***AIAN =	American Indian Alaskan Native				17,289	5,113	9,074	1,238	112	1,235	29	95	393
					16,500	5,912	8,564	596	103	641	26	58	600
					16,312	4,656	8,806	853	89	1,167	31	83	628