

Sites Reservoir Update



SGPWA Workshop – July 19, 2021

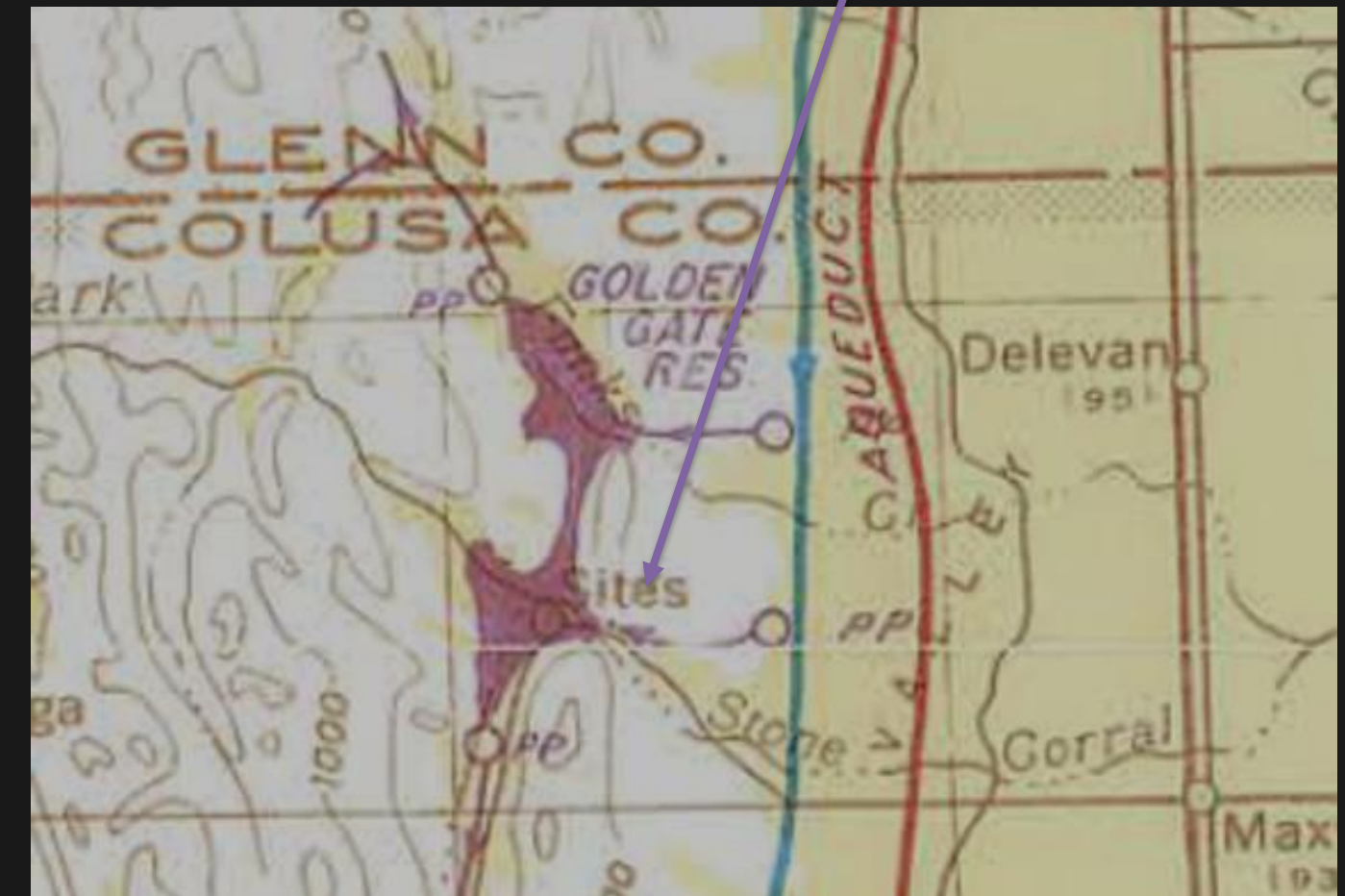
Bulletin No. 3

The

CALIFORNIA WATER PLAN



The Golden Gate Reservoir (aka Sites) was originally considered a “local project” as part of the aspirational California Water Plan 1957.



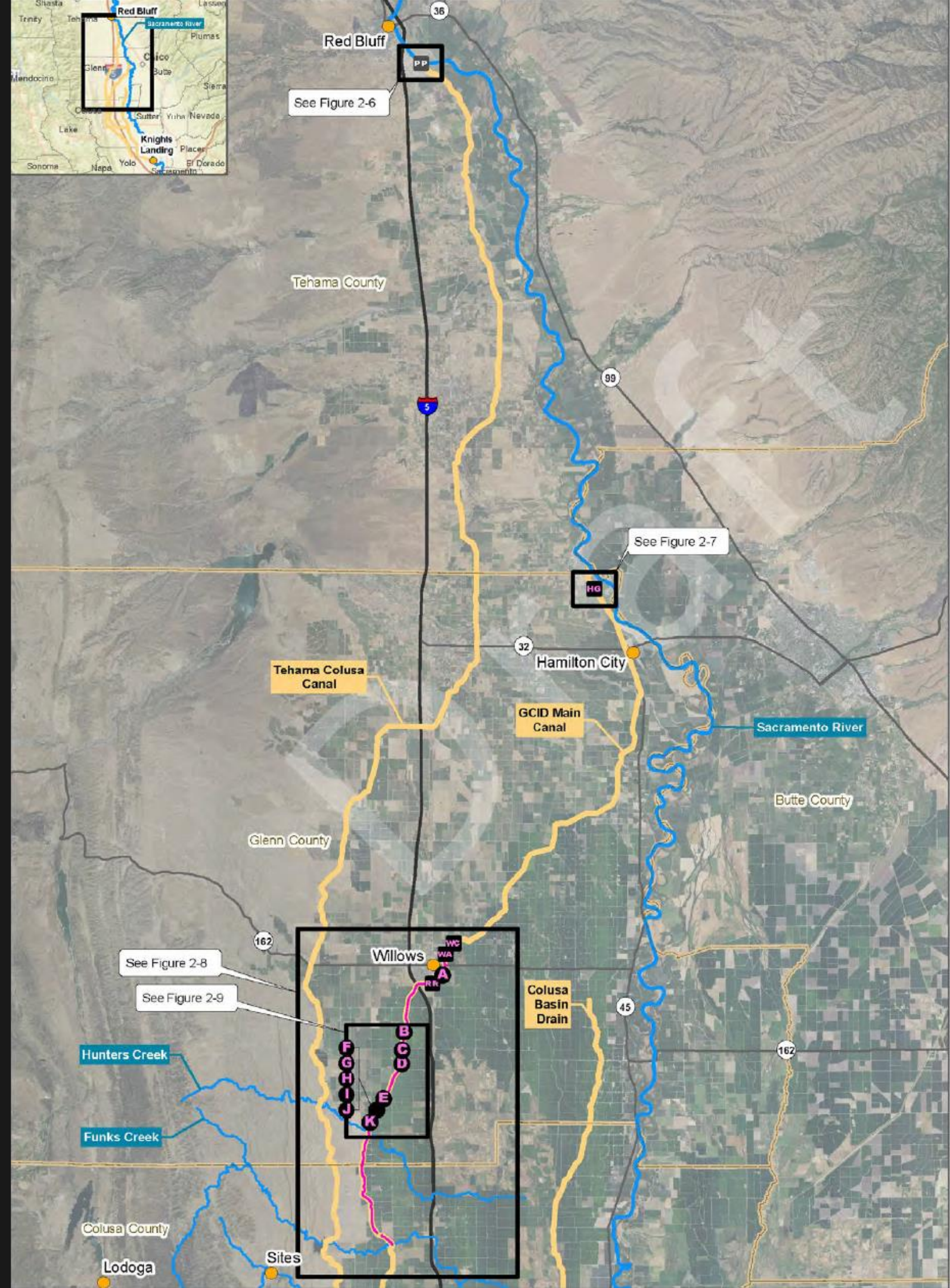
Renewed discussions in the 1980's, the Sites Reservoir Project began to gain attention in the 2000's.

Prop. 1 (2014) funding helped the project along with \$840M but local "investors" needed to cover the remainder.

In 2020 the project was "right sized" to a 1.5 MAF reservoir and reduced the cost by ~\$1.5B

Investors continued to fund and develop with "cash calls" to further develop project soft cost elements.





30 participants span California

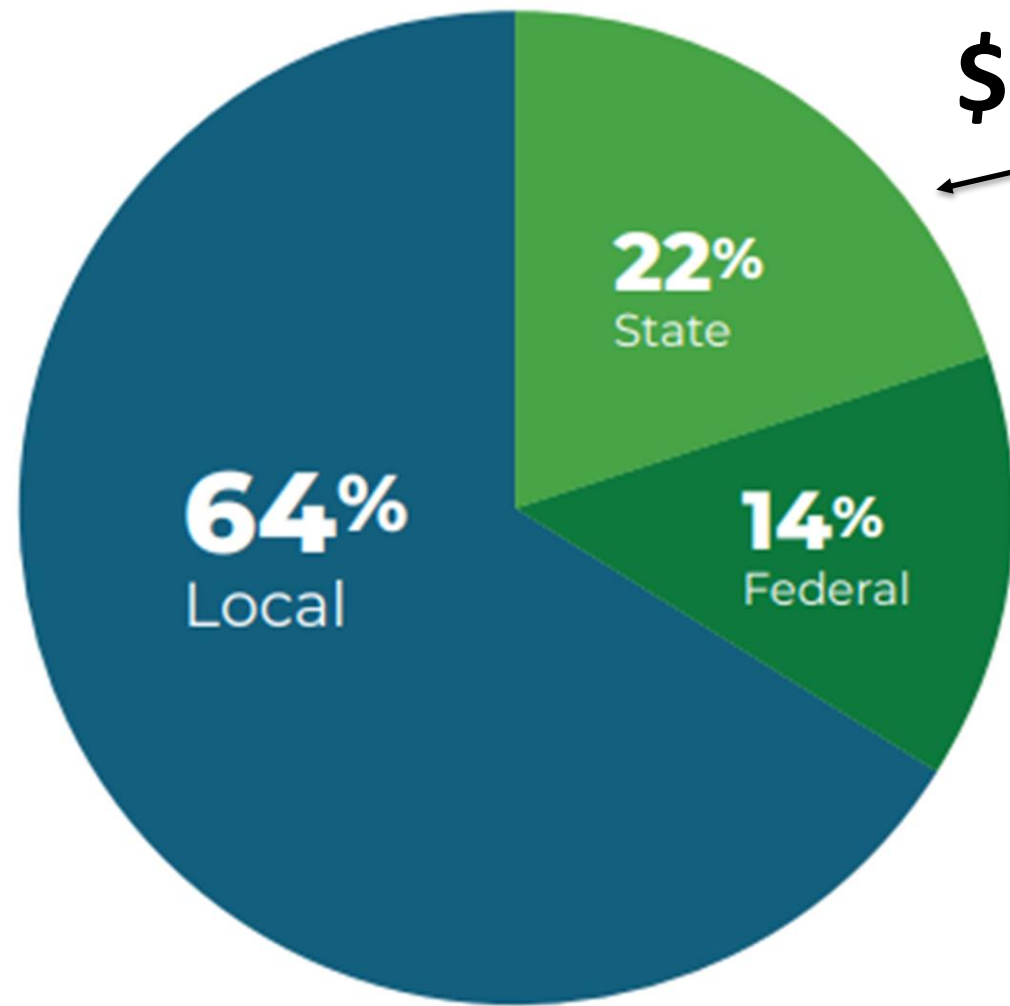
Antelope Valley – East Kern Water Agency
Bureau of Reclamation
California Department of Water Resources
Carter Mutual Water Company
City of American Canyon
City of Roseville
City of Sacramento
Coachella Valley Water District
Colusa County
Colusa County Water District
Cortina Water District
David Water District
Desert Water
Dunnigan Water District
Glenn County

Glenn-Colusa Irrigation District
Irvine Ranch Water District
La Grande Water District
Metropolitan Water District of Southern California
Reclamation District 108
Rosedale-Rio Bravo Water Storage District
Sacramento County
San Bernardino Valley Municipal Water District
San Geronio Pass Water Agency
SCV Water
Tehama Colusa Canal Authority
Western Canal Water District
Westside Water District
Wheeler Ridge-Maricopa Water Storage District
Zone 7 Water Agency



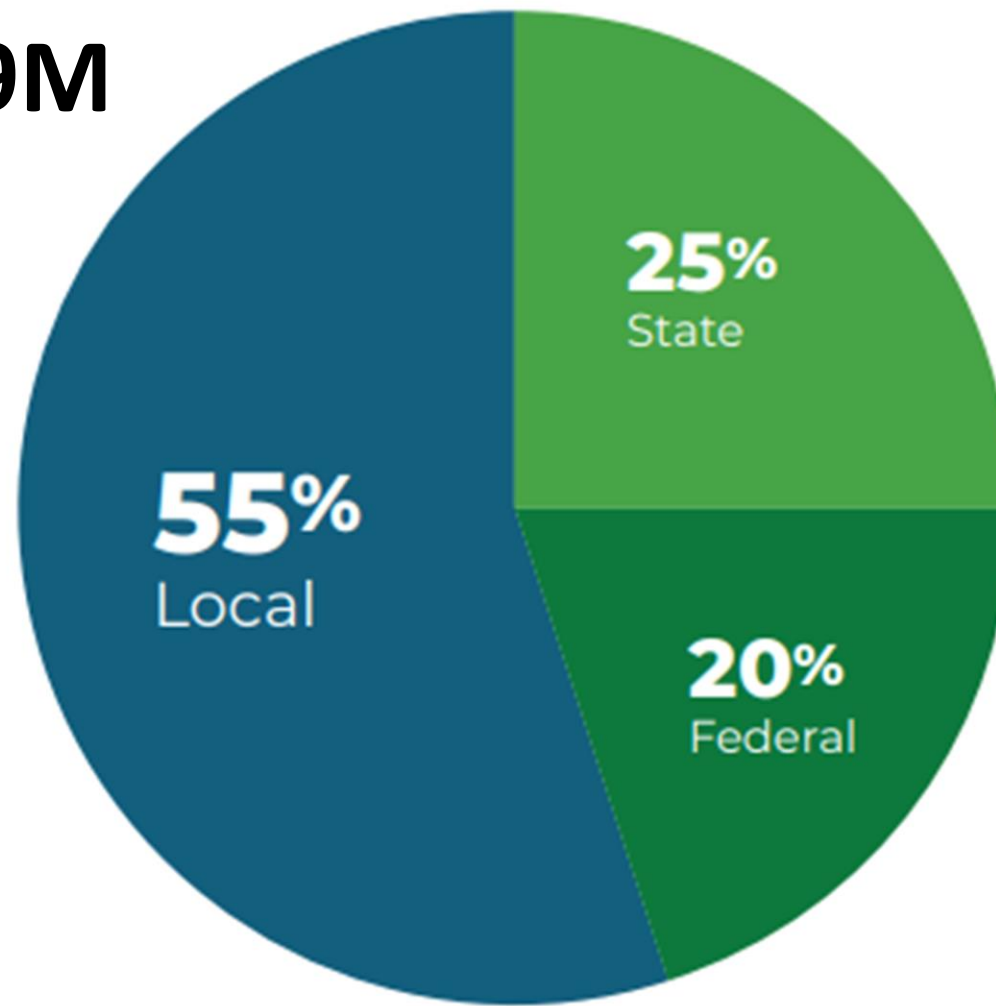
Cost Share (Actual)

Since 2015 through December 31, 2020

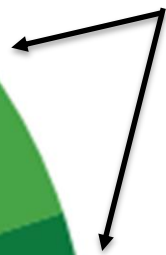


Cost Share (Forecast)

Since 2015 through December 31, 2021



\$19M



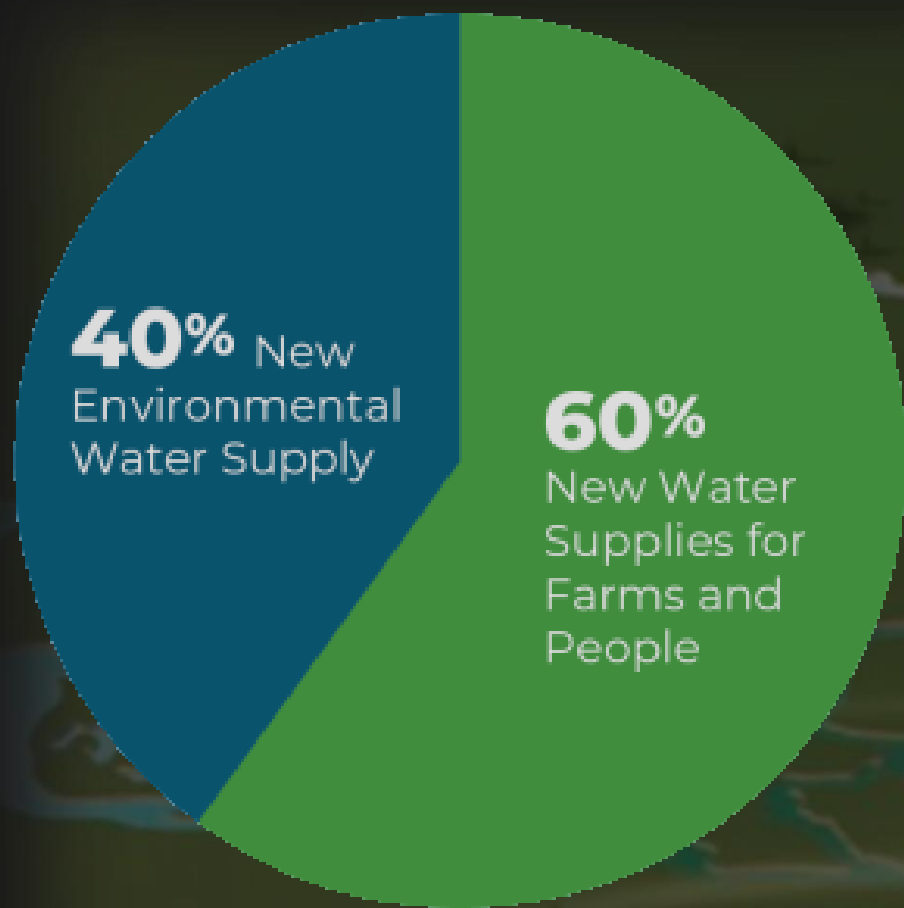
\$37 million

invested by Sites Reservoir participants through 2020.

Sites Reservoir participants are committed to seeing this project constructed.

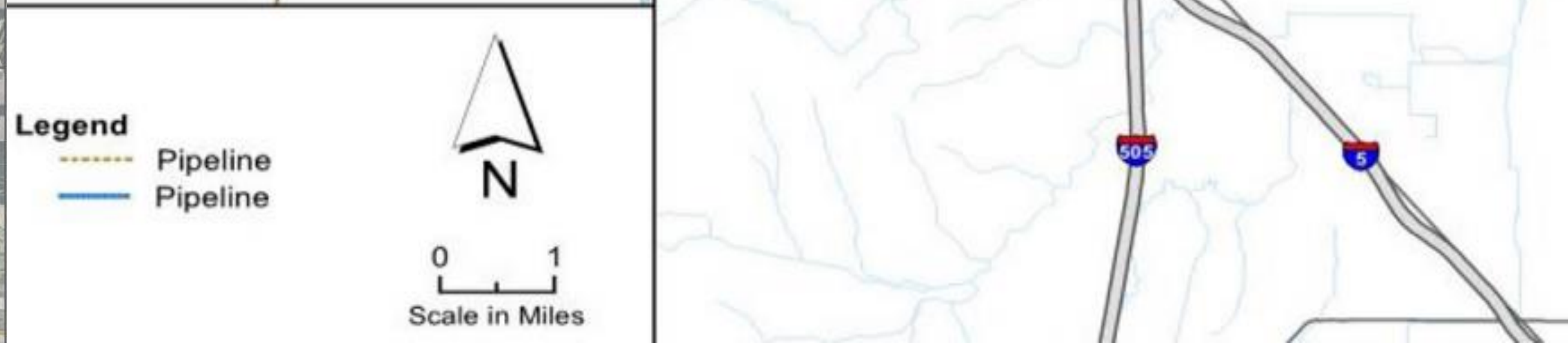
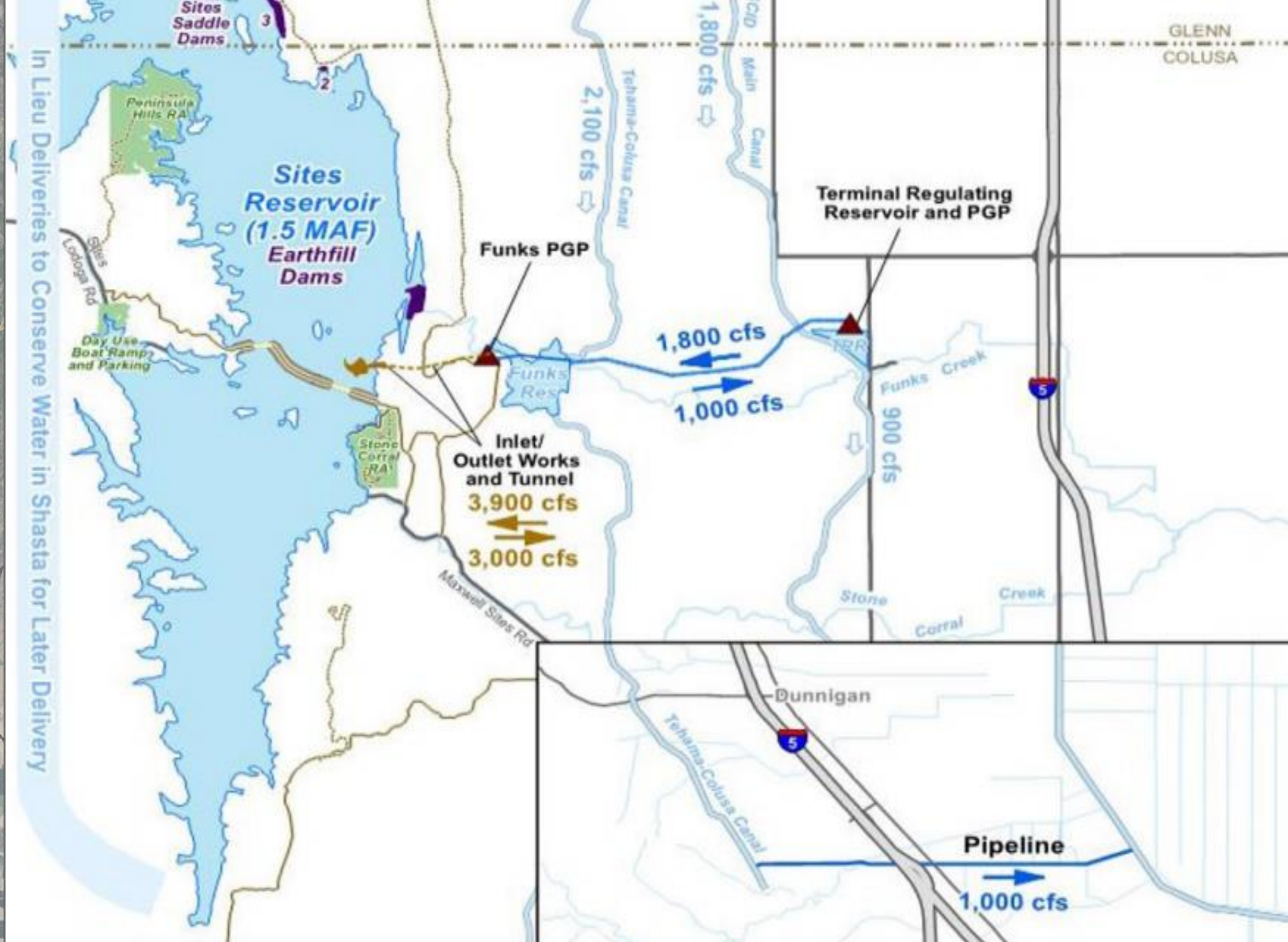
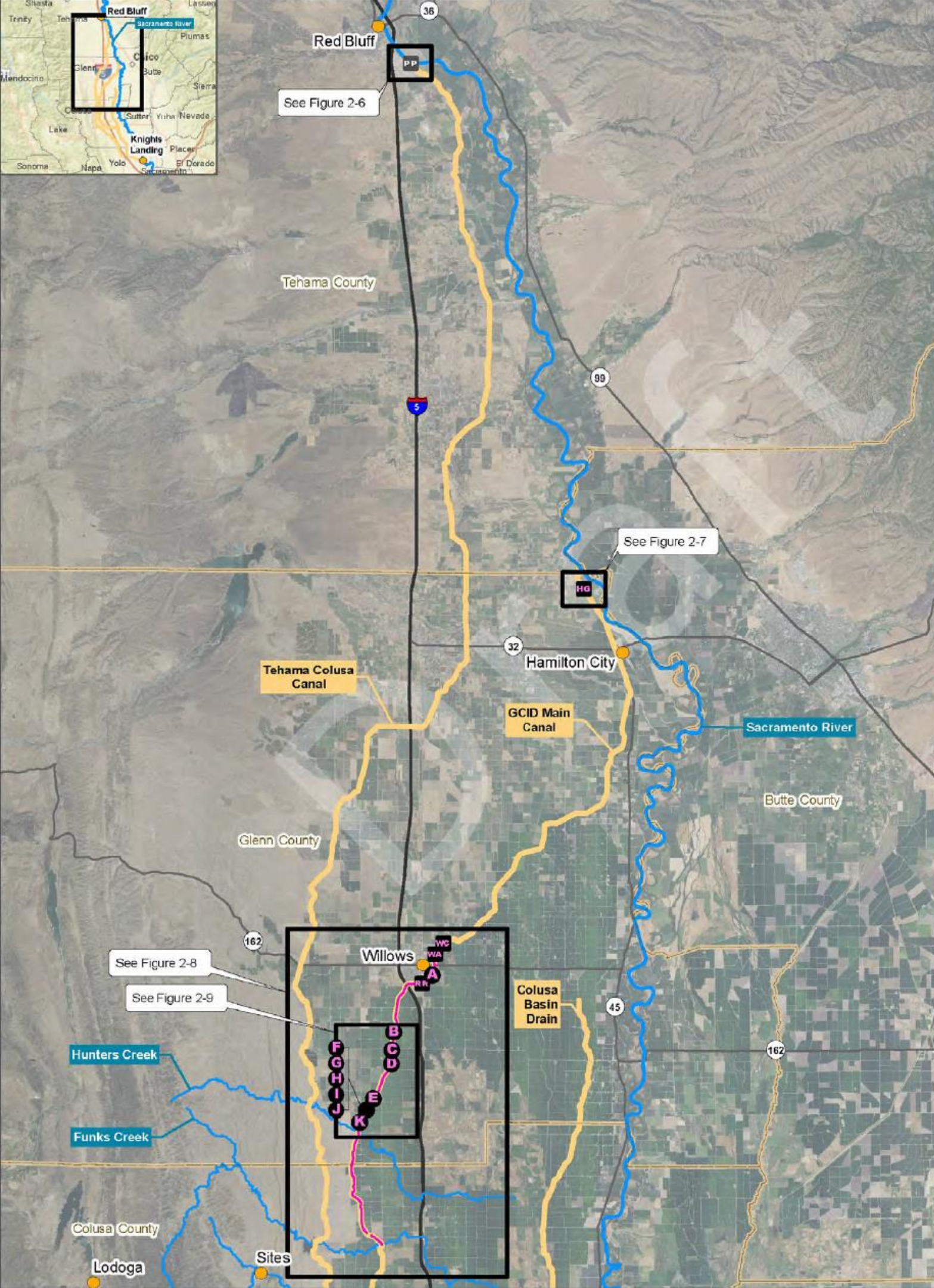


— BUREAU OF —
RECLAMATION



BENEFITS

-  **Adaptable to Climate Change**
Improves water system reliability and performance as climate changes
-  **Off-stream Storage**
Does not create a barrier to native fish migration
-  **Flood Control and Protection**
Creates opportunities for local flood damage reduction and flood protection
-  **Local Leadership and Cooperation**
Aligns with Sacramento Valley's values and fosters regional and statewide collaboration
-  **Dry Year Water Supply**
Provides reliable dry year water supply for California communities, farms and businesses
-  **Recreational Opportunities**
Provides new recreational opportunities in the northern Sacramento Valley
-  **Local Economy**
Creates hundreds of construction-related jobs, along with long-term operation jobs
-  **Cooperative Operation**
Increases effectiveness and efficiency of existing water storage infrastructure
-  **Federal and State Partners**
Provides adaptability to current and future priorities



Tao Te Ching - Chapter 11

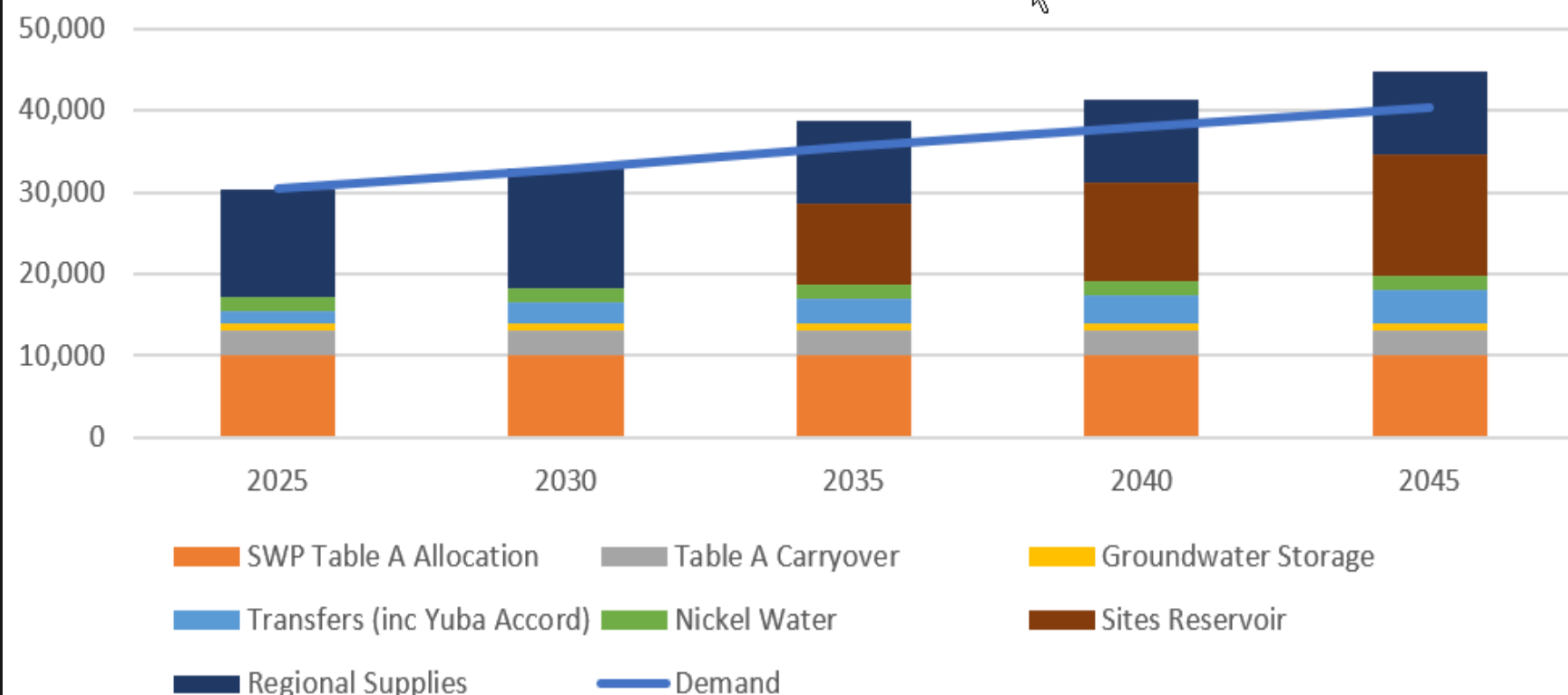
Thirty spokes share the wheel's hub;
It is the center hole that makes it useful.
Shape clay into a vessel;
It is the space within that makes it useful.
Cut doors and windows for a room;
It is the holes which make it useful.
Therefore profit comes from what is there;
Usefulness from what is not there.

Sites Project Water Supply

Year Type	Water Supply (thousand acre-feet)
Wet	87
Above Normal	154
Below Normal	224
Dry	427
Critically Dry	348
Long-Term Average	232



Normal Year Supply vs Demand



Sites Project Deliveries

DRAFT-Subject to Revision

Sites Participant: San Geronio Pass Water Agency

Deliveries (TAF/year)

	ALT 1A 011221	ALT 1B 011221	ALT 2 011221	ALT 3 020121
Long-term Average	10.9	10.1	9.7	7.9
Dry and Critically Dry Years	27.4	25.4	24.2	19.9
Wet Years	0.0	0.0	0.0	0.0
Above Normal Years	0.0	0.0	0.0	0.0
Below Normal Years	4.4	4.0	4.5	3.1
Dry Years	29.1	26.5	26.0	20.5
Critically Dry Years	24.7	23.9	21.4	19.0

Notes:

1. Water year types are calculated using the D-1641 Sacramento Valley 40-30-30 water year type calculation
2. End-point deliveries assume the NOD to SOD transfer operation as defined in the assumptions
3. Annual average deliveries are calculated on a Jan-Dec SWP contract year for SOD participants
4. South of Delta deliveries are based on Authority exports modeled in CalSim II
5. Deliveries do not include any San Luis reoperation or south of Delta storage agreements
6. South of Delta delivery arcs were combined and then deliveries were distributed proportional to participation

...we cannot revert to managing the Projects as though ensuing years will be "average."

“Acre-feet” to “Shares” to “Storage” for a storage project

**April 21, 2021*

Existing participation x 6.234 AF = Storage Allocation

10,000 “shares” = 62,340 AF space SGPWA

4,000 “shares” = 24,963 AF space BCVWD

14,000 regional “shares” = 87,276 AF space

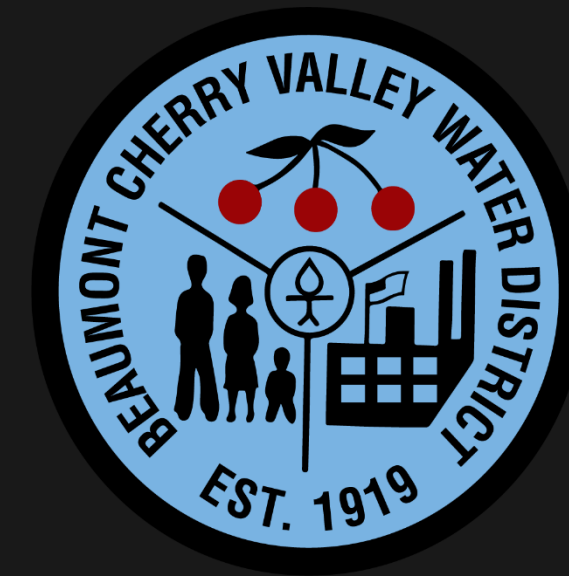
Two “Cash Calls” to Date:

- **Call 1 - 2018**
 - SGPWA - \$1,000,00 (10,000 shares)
 - BCVWD - \$400,000 (4,000 shares)
- **Call 2 - 2020**
 - SGPWA - \$1,000,000 (10,000 shares)
 - BCVWD - \$400,000 (4,000 shares)

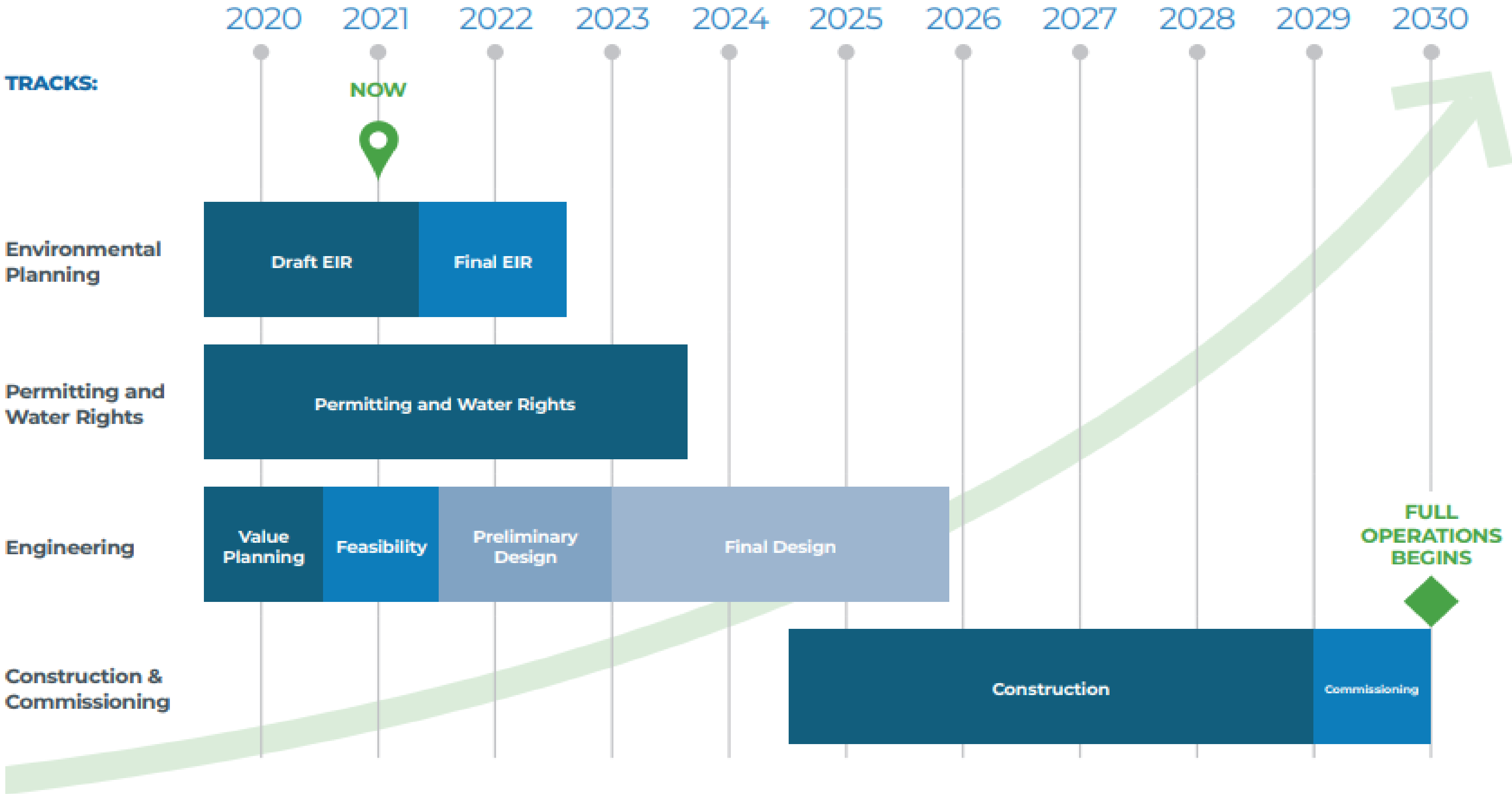
Regional Total - \$2,800,000* (14,000 regional shares)

**Actual Total = *2,919,000 including misc. charges & adjustments*

- Future Calls (= \$ per share)
 - Jan 2022 (~\$100); Jan 2023 (~\$140); Jan 2024 (~\$160)



Sites Reservoir Project Schedule



Executive Order N-10-19



2020 WATER RESILIENCE
PORTFOLIO

In Response to the Executive Order N-10-19

7. Expand smart surface water storage where it can benefit water supply and the environment.

7.1 Accelerate state permitting of projects that protect and enhance fish and wildlife and water supply reliability—such as Sites, Pacheco Reservoir Expansion, and the Chino Basin Conjunctive Use Environmental Water Storage/Exchange Program—that were selected under the Water Storage Investment Program (Proposition 1).

7.1 Accelerate state permitting of projects that protect and enhance fish and wildlife and water supply reliability—such as Sites, Pacheco Reservoir Expansion, and the Chino Basin Conjunctive Use Environmental Water Storage/Exchange Program—that were selected under the Water Storage Investment Program (Proposition 1).
(CNRA, CalEPA)