



DISCUSSION OF SGPWA CAPITAL IMPROVEMENTS

ENGINEERING WORKSHOP MAY 10, 2021

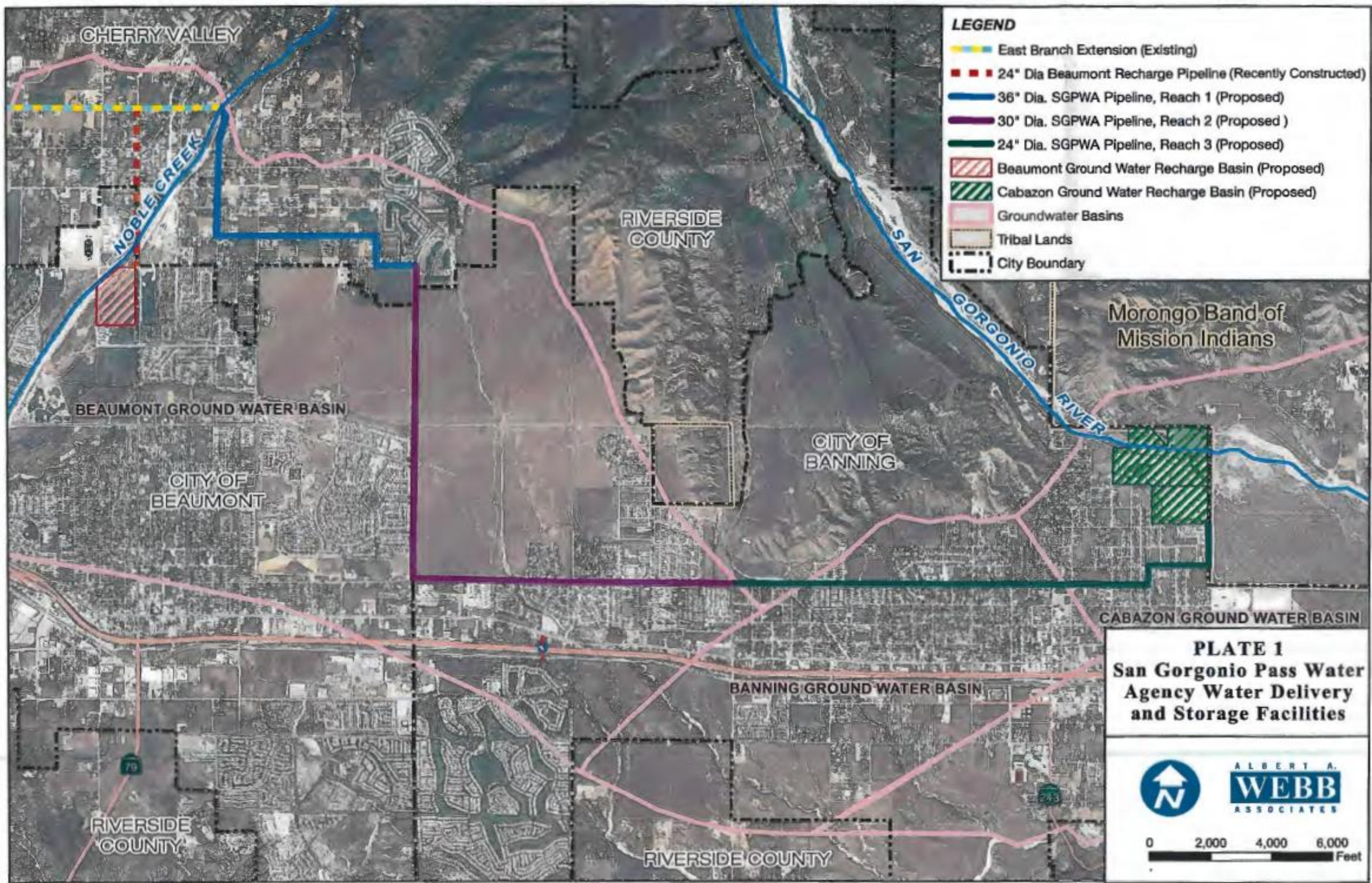




DISCUSSED FOR MANY YEARS

Backbone Pipeline & Other Local Facilities

- 2005 Study Contemplating Regional Pipeline, Other CIP Improvements & Use of Gravel Pits (Cabazon Pipeline Terminus)
- Plans Further Refined Along with Discussions with Banning
- Various Reaches Coined the “Banning” & “Cabazon” Pipeline(s)
- Local Interests Waned, Project Rebrand (~2014):
 - SGPWA Reach 1
 - SGPWA Reach 2
 - SGPWA Reach 3
- Parts of the Agency CIP Plan were Implemented:
 - Beaumont Area Recharge Facility (BARF) – 2019
 - 32 cfs EBX/Foothill Pipeline Capacity Purchase from Valley District - 2020



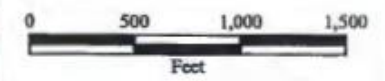
LEGEND

- East Branch Extension (Existing)
- 36" Dia. SGPWA Pipeline, Reach 1
- 30" Dia. SGPWA Pipeline, Reach 2

PLATE 3
San Gorgonio Pass Water Agency Water Delivery and Storage Facilities
SGPWA Pipeline Reach 1



ALBERTA
WEBB
ASSOCIATES



Map revised Sept. 5, 2014. G:\2009-05-003\GIS\Plate3_Reach1.mxd

LEGEND



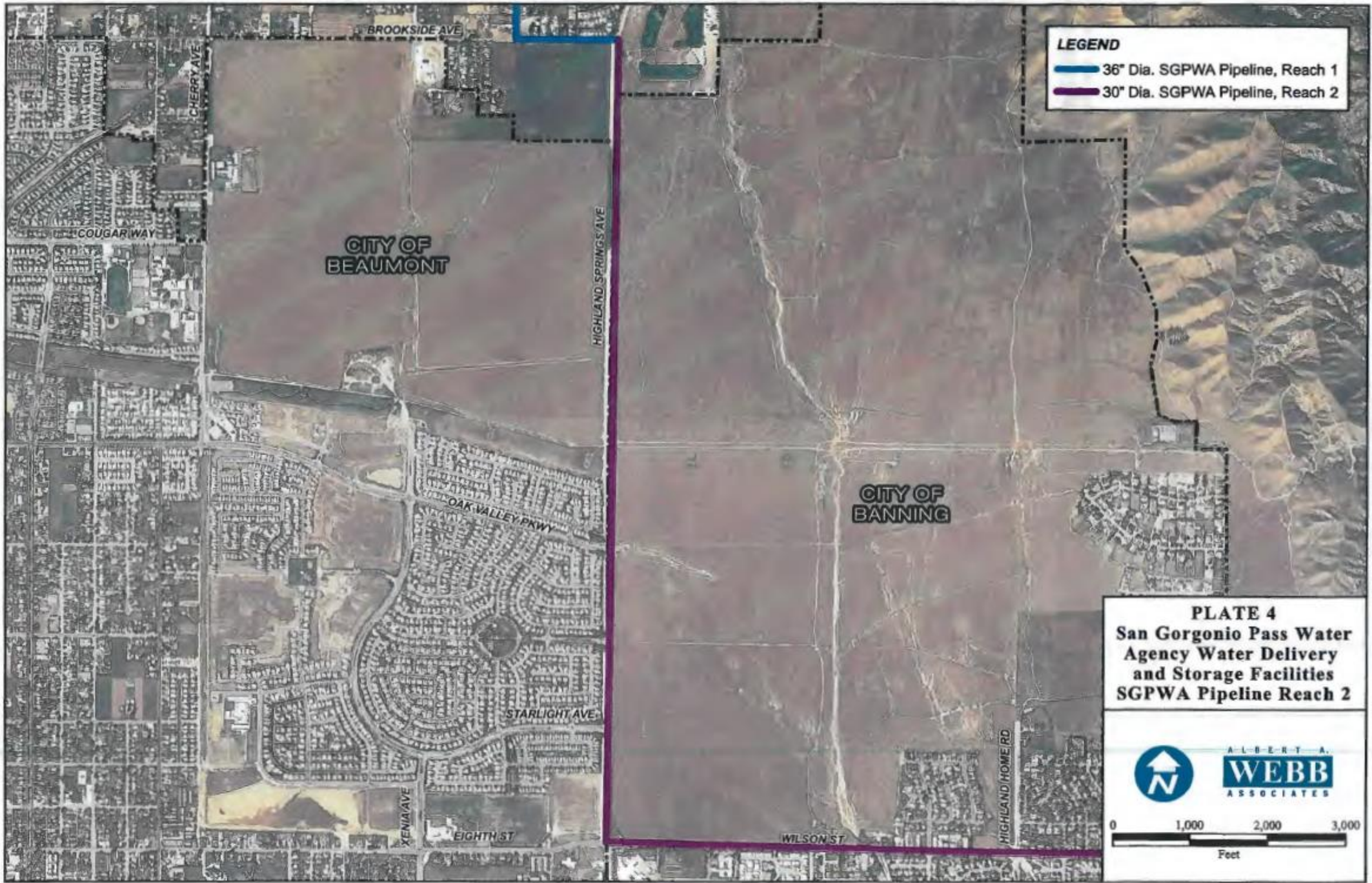
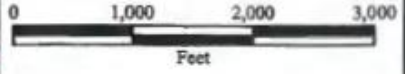
-  36" Dia. SGPWA Pipeline, Reach 1
-  30" Dia. SGPWA Pipeline, Reach 2

PLATE 4
San Gorgonio Pass Water Agency Water Delivery and Storage Facilities SGPWA Pipeline Reach 2





ALBERTA
WEBB
 ASSOCIATES



Map revised April 5, 2014. C:\2006\05-4003\GIS\Water_Reach2.mxd

LEGEND

-  30" Dia. SGPWA Pipeline, Reach 2
-  24" Dia. SGPWA Pipeline, Reach 3

**CITY OF
BANNING**

WILSON ST

HIGHLAND HOME RD

OMAR ST

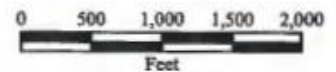
RAMSEY ST

SUNSET AVE



PLATE 5
San Geronio Pass Water
Agency Water Delivery
and Storage Facilities
SGPWA Pipeline Reach 2



ALBERT A.
WEBB
ASSOCIATES



LEGEND

-  30" Dia. SGPWA Pipeline, Reach 2
-  24" Dia. SGPWA Pipeline, Reach 3

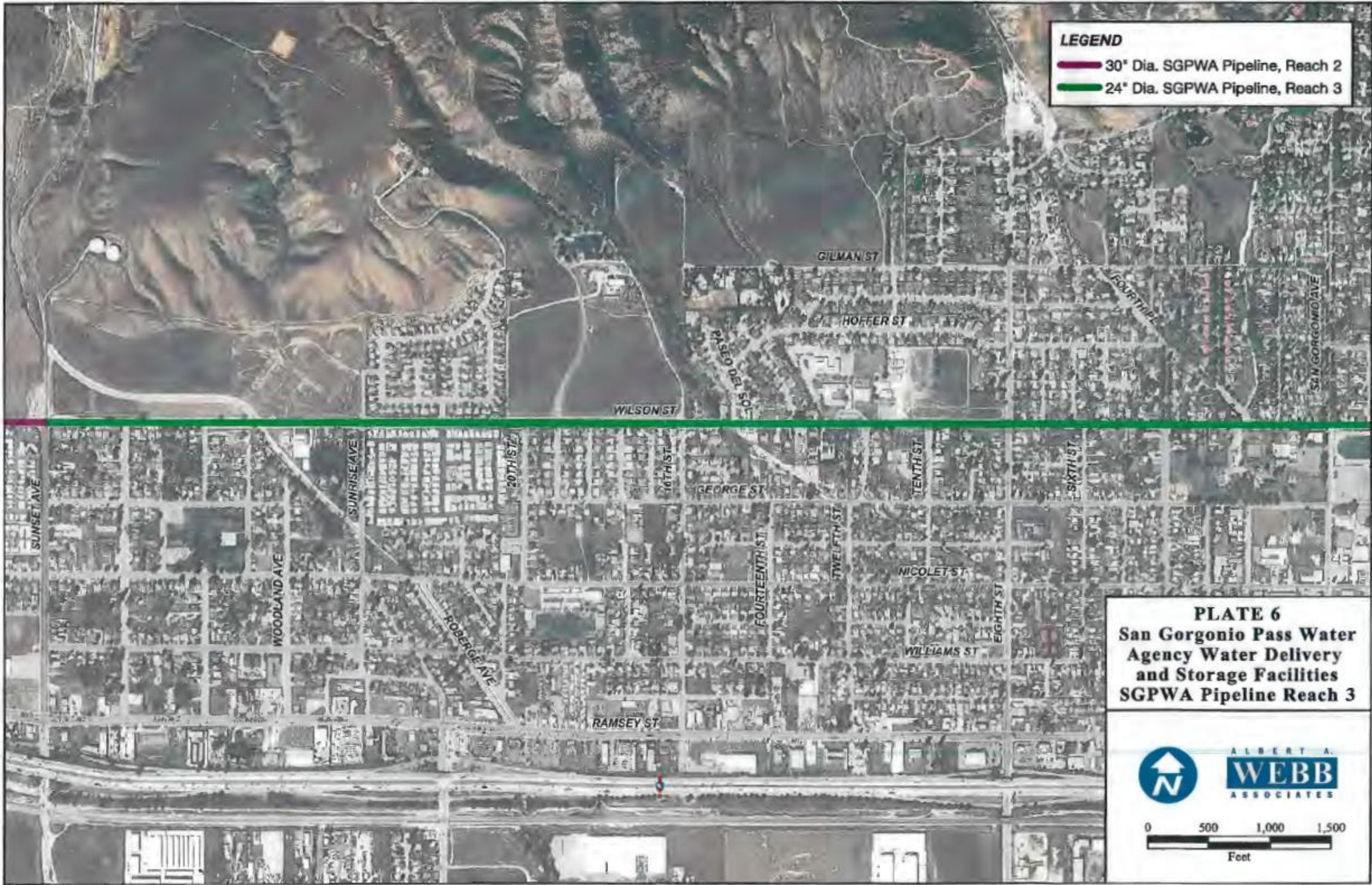

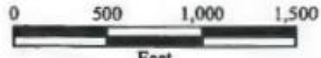


PLATE 6
San Geronio Pass Water Agency Water Delivery and Storage Facilities
SGPWA Pipeline Reach 3



ALBERT A. WEBB ASSOCIATES



Map revised Sept. 3, 2014. C:\2014\05-08\13\GIS\Plate6_Reach3.mxd

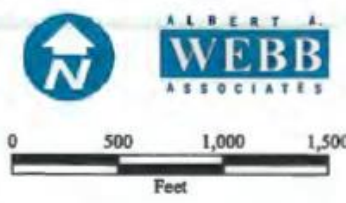
LEGEND

- 24" Dia. SGPWA Pipeline, Reach 3
- Cabazon Ground Water Recharge Basin (Not Developed)
- Cabazon Ground Water Recharge Basin (Proposed Developed)

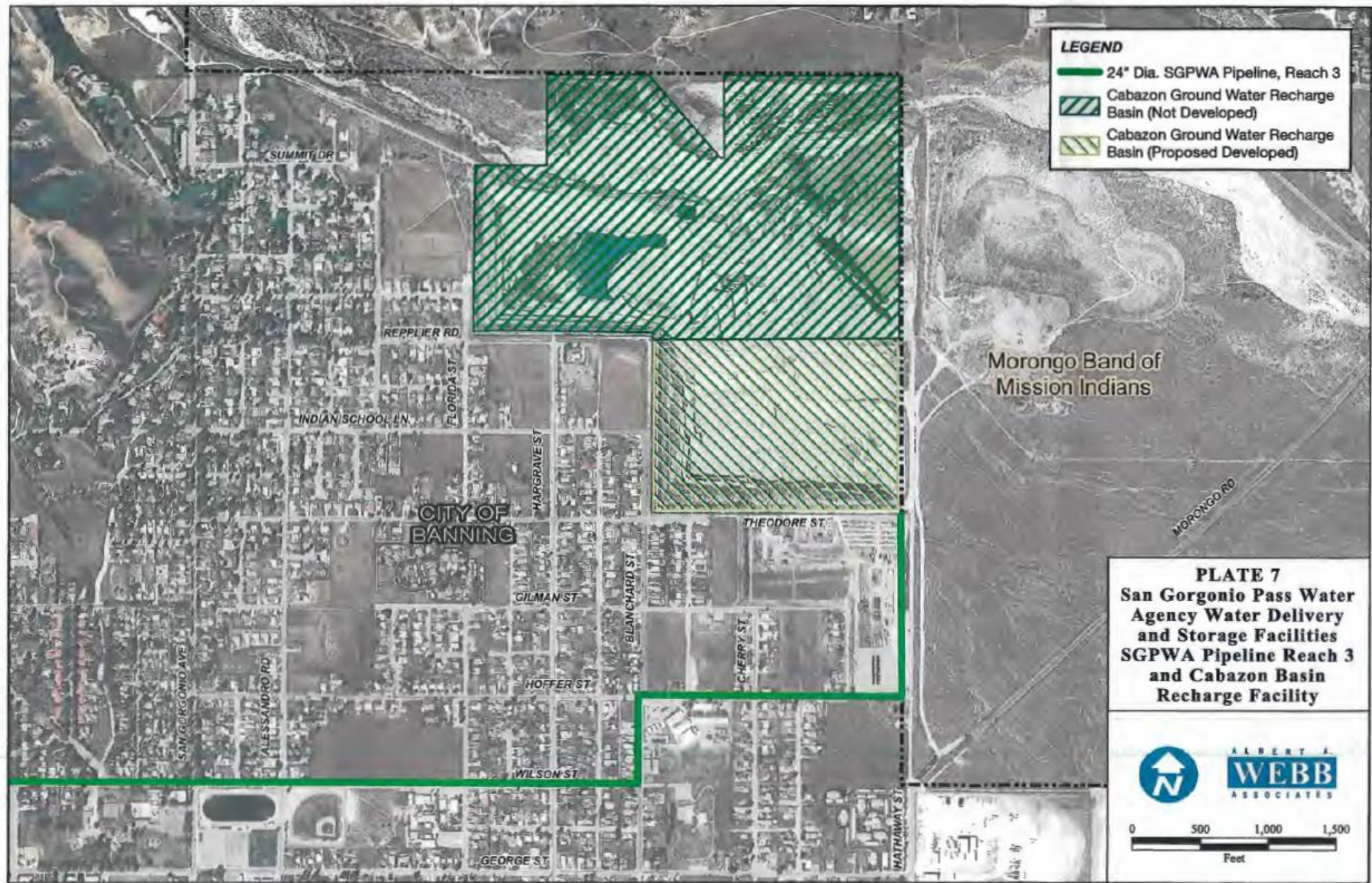
Morongo Band of Mission Indians

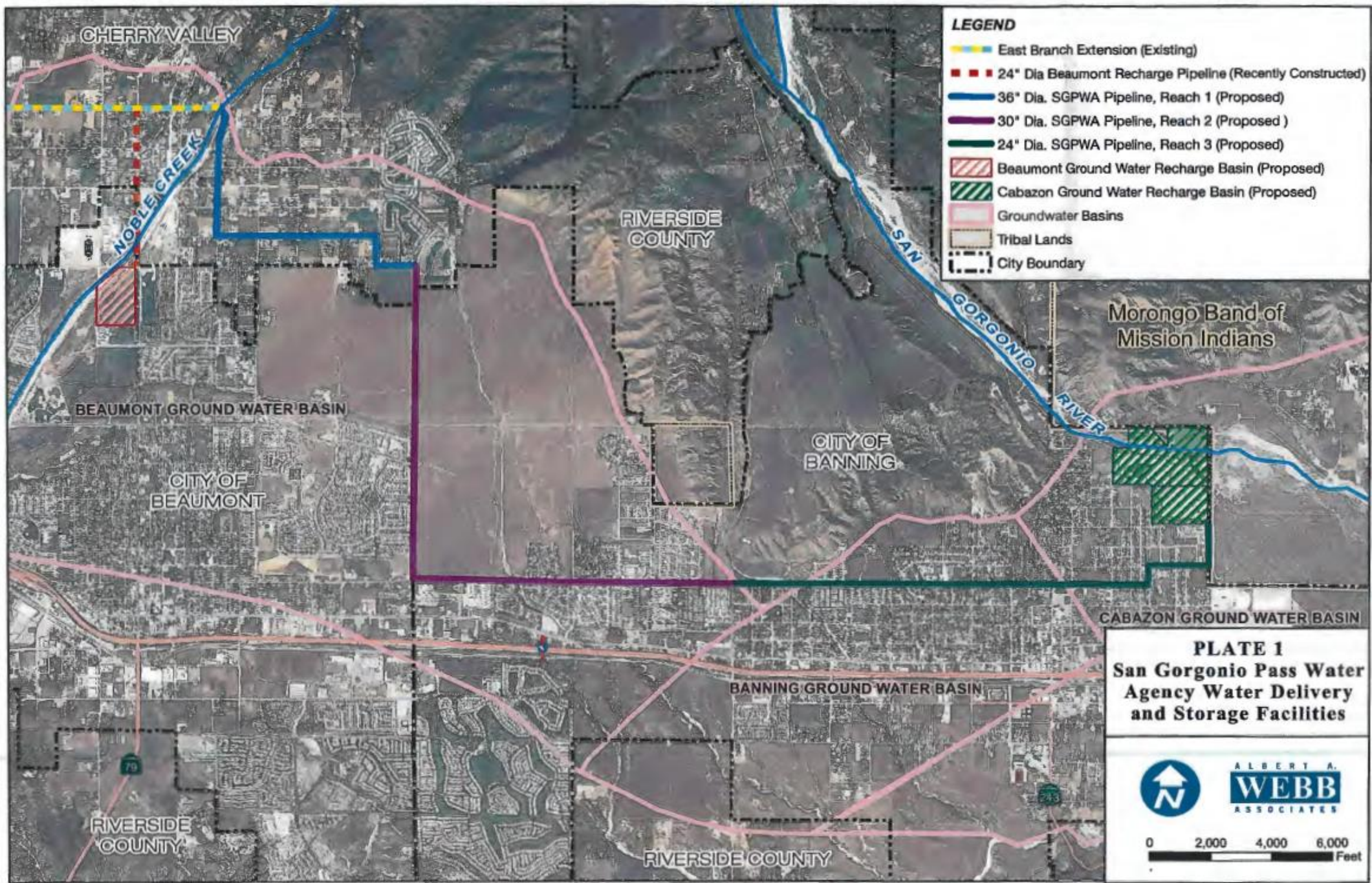
PLATE 7
San Geronio Pass Water Agency Water Delivery and Storage Facilities SGPWA Pipeline Reach 3 and Cabazon Basin Recharge Facility

0 500 1,000 1,500
Feet



ALBERT A. WEBB ASSOCIATES







Description	Diameter	Capacity (CFS)	Length	Cost*
Reach 1 Pipeline	36-inch	52	12,000 feet	\$10,000,000
Reach 2 Pipeline	30-inch	30	22,000 feet	\$15,500,000
Reach 3 Pipeline	24-inch	22	19,000 feet	\$10,700,000
Recharge Facility	-	-	<i>(181 acres)</i>	\$14,200,000
Total				\$50,400,000

OBSERVATION

The area would be well positioned for material State/Federal grant support for a regional backbone supply pipeline. The anticipated level of financial support may be unique for this decade.

The program will need broad regional support, close local collaboration and appreciable work to be in a fundable position (i.e. “shovel ready”) within the next 1-2 years.

