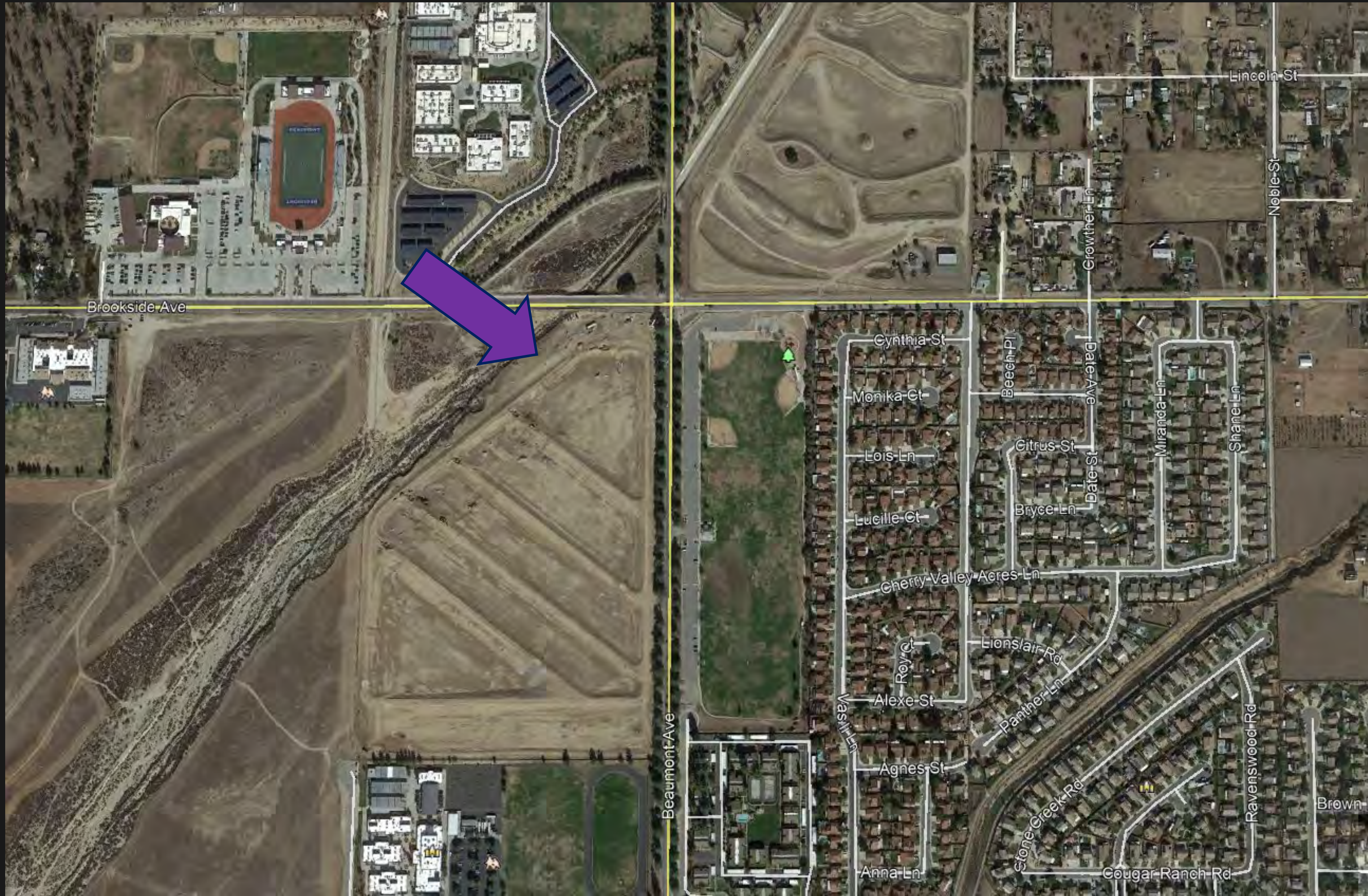




# SGPWA Recharge Facility

# Maintenance Review

February 8, 2021  
Engineering Workshop



**Pond 1**  
North  
South  
East  
West





# Pond 1

North

South

East

West





# Pond 1

North

South

East

West





# Pond 1

North

South

East

West





# Pond 1

North

South

East

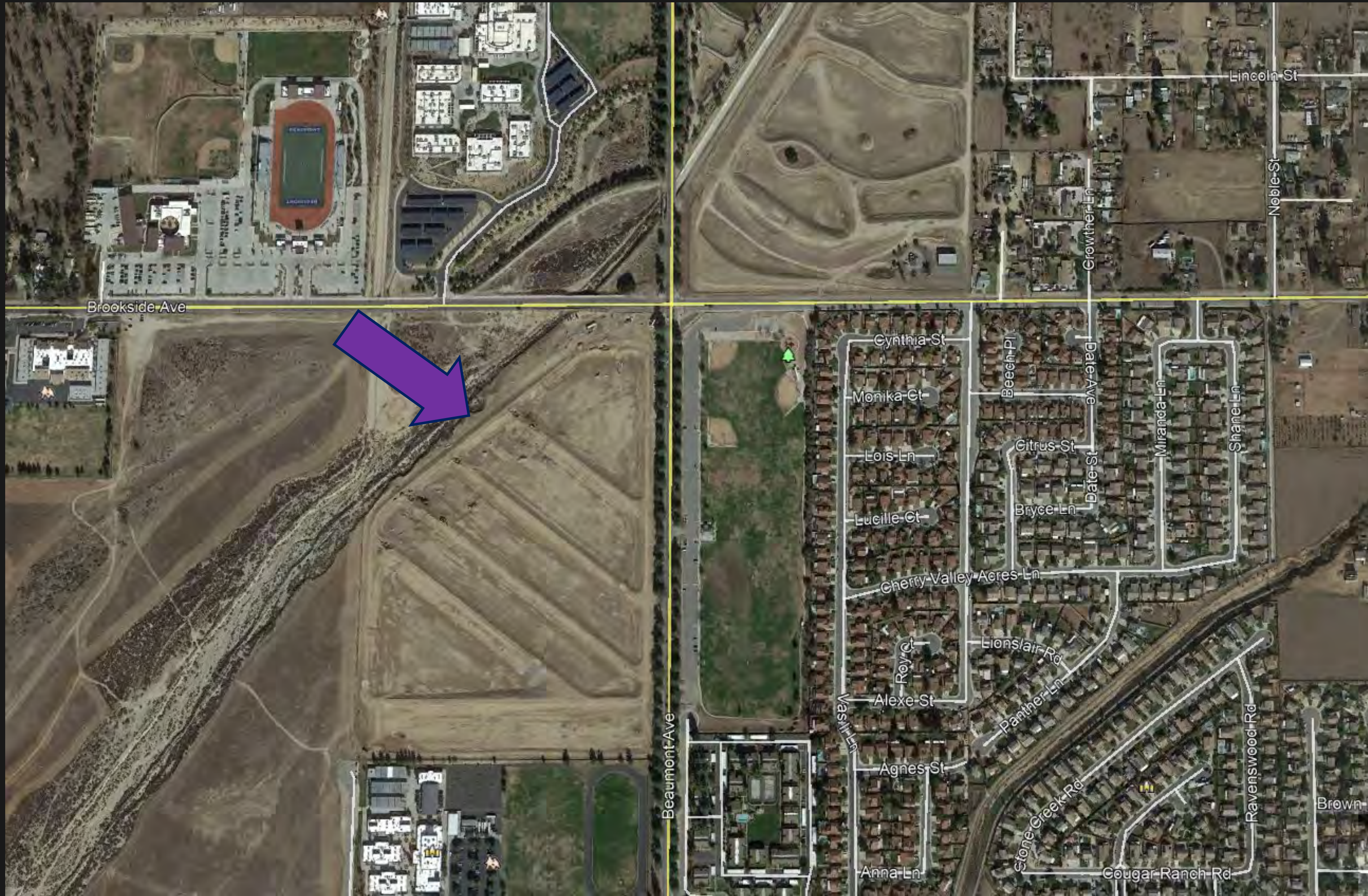
West





# Pond 1





**Pond 2**  
North  
South  
East  
West







# Pond 2

North

South

East

West





# Pond 2

North

South

East

West





# Pond 2

North

South

East

West





# Pond 2

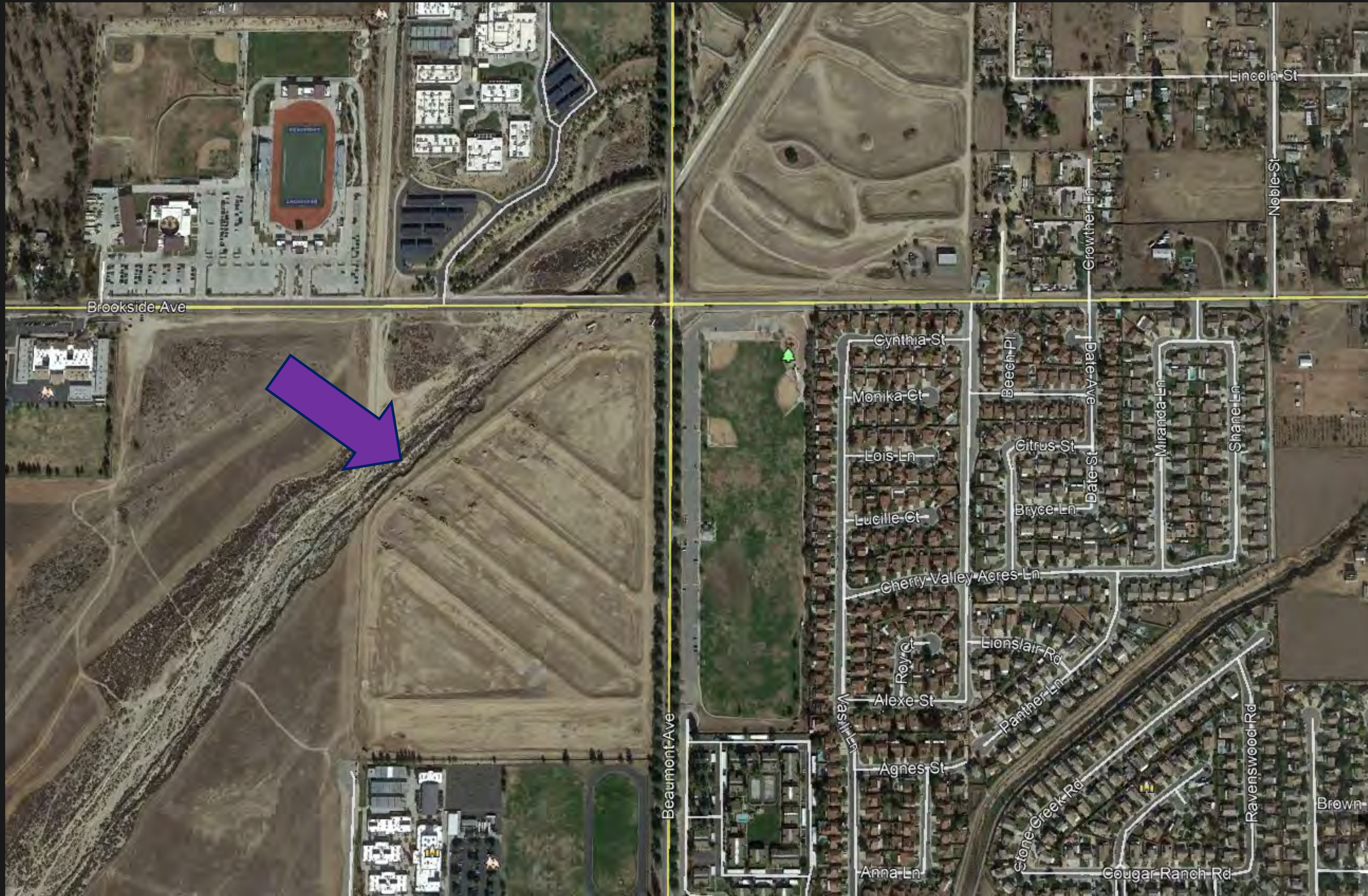
North

South

East

West





**Pond 3**  
North  
South  
East  
West





# Pond 3

North

South

East

West





# Pond 3

North

South

East

West





# Pond 3

North

South

East

West







# Pond 3

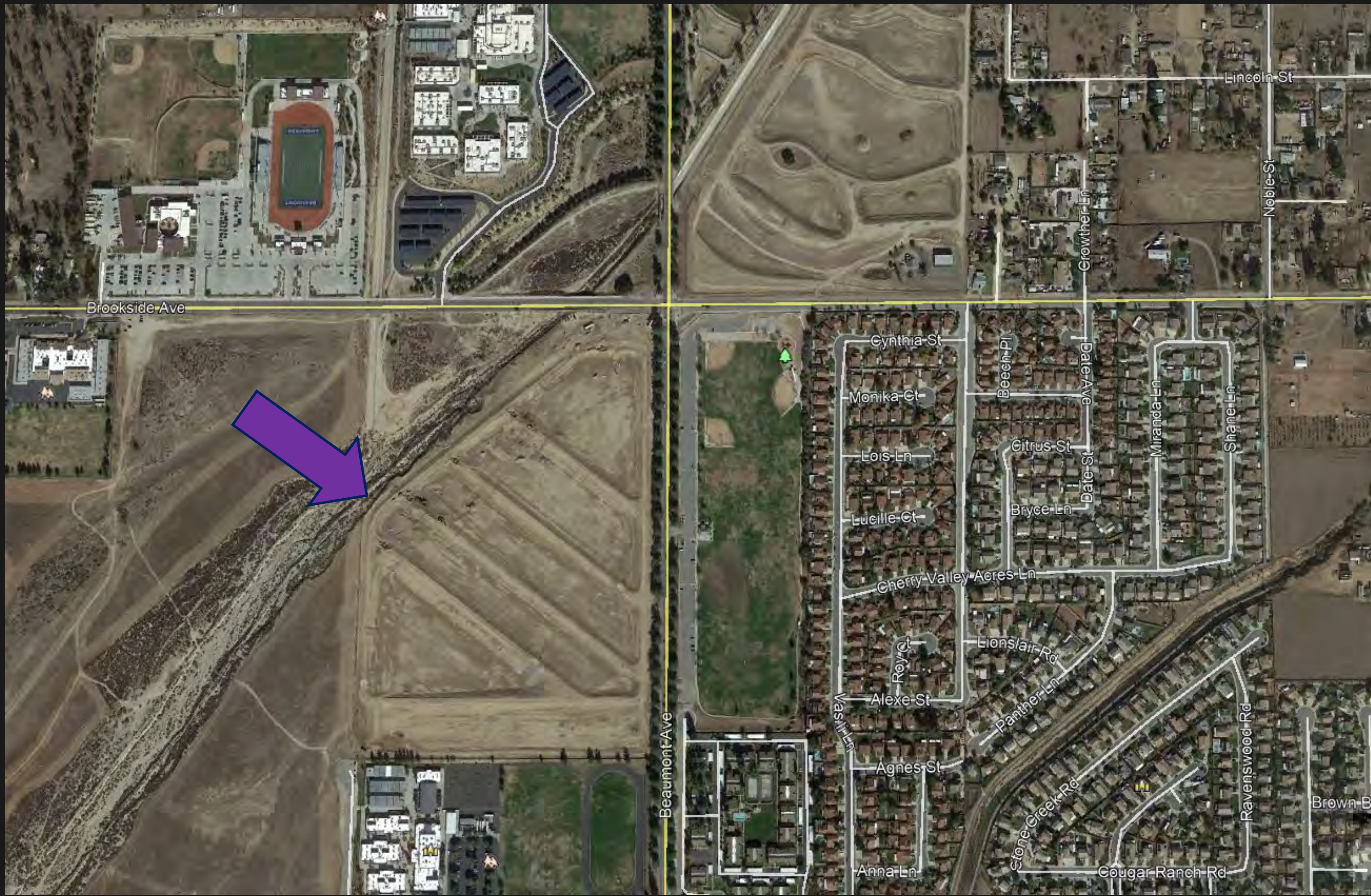
North

South

East

West





**Pond 4**  
North  
South  
East  
West





# Pond 4

North

South

East

West





# Pond 4

North

South

East

West





# Pond 4

North

South

East

West





# Pond 4

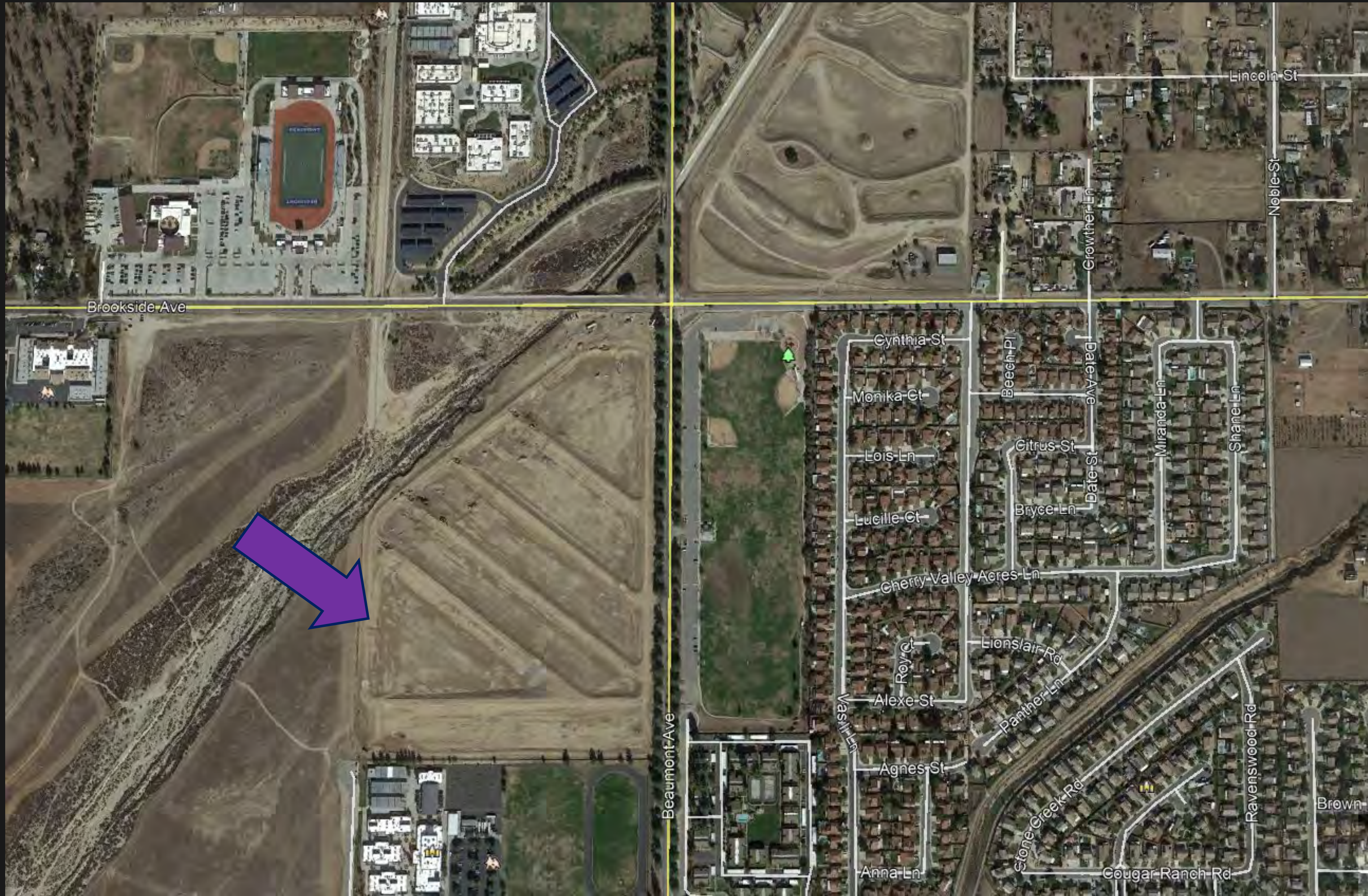
North

South

East

West





**Pond 5**  
North  
South  
East  
West





# Pond 5

North

South

East

West







# Pond 5

North

South

East

West





# Pond 5

North

South

East

West





# Pond 5

North

South

East

West



# Pond 5



# West Slope



# South Slope



Aerial Image December 2018 during pond construction.

Note erosional features on north and east sides of ponds.

Demonstrating that this is not unusual and does not appear to be getting progressively worse.

Grass/vegetation on slopes appear to help stabilize basin walls.



## Recommendation

No maintenance recommended at this time. Continue to monitor.

