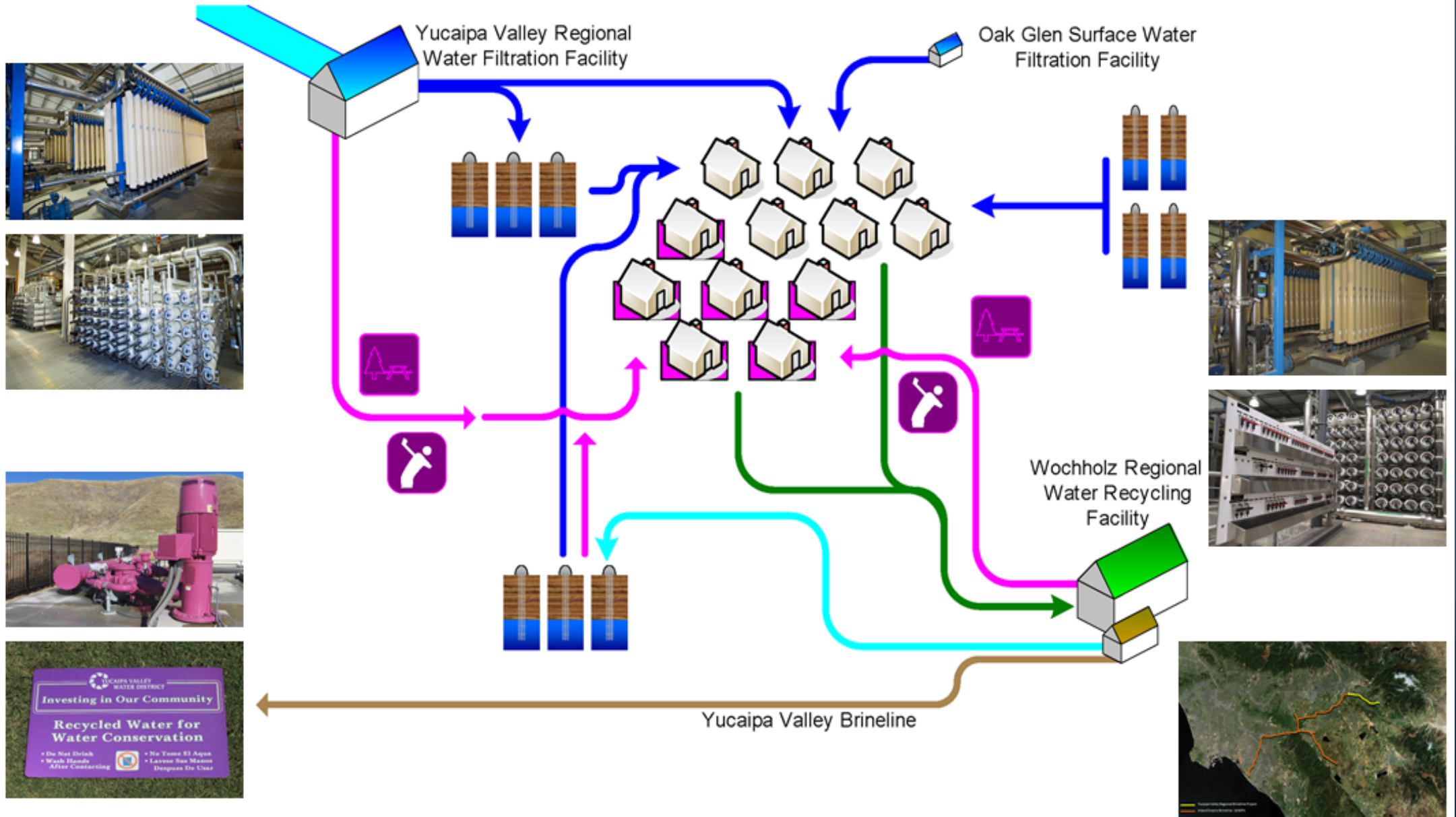


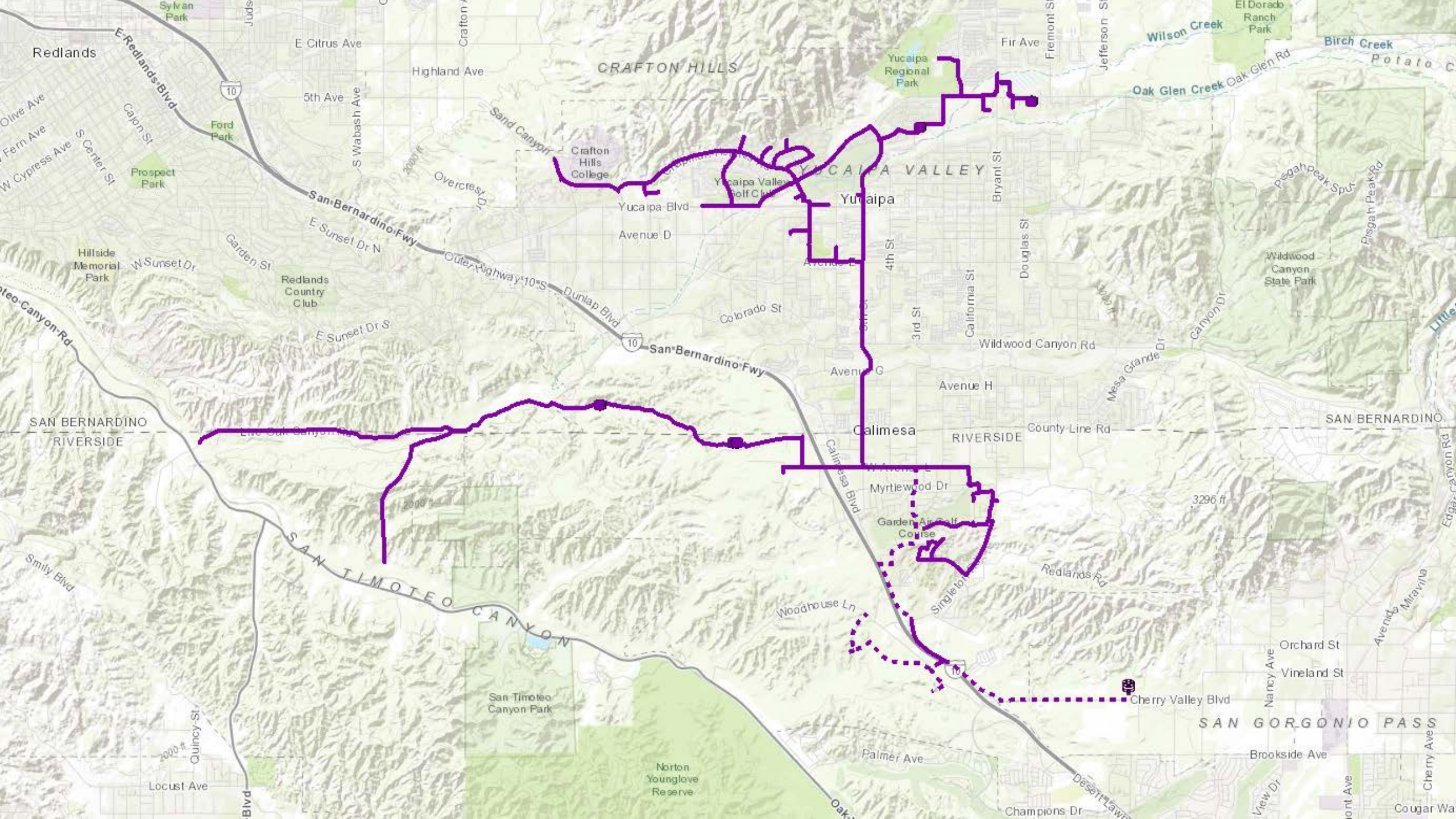
Item 4

Overview of dual-plumbed communities in Calimesa

Jennifer Ares
Water Resource Manager
jares@yvwd.us

Sustainable and Integrated Infrastructure Concepts





Redlands

CRAFTON HILLS

YUCAIPA VALLEY

Yucaipa

Calimesa

RIVERSIDE

SAN GORONIMO PASS

SAN BERNARDINO RIVERSIDE

SAN BERNARDINO RIVERSIDE

SAN TIMOTEO CANYON

E Redlands Blvd
Olive Ave
Fern Ave
W Cypress Ave
S Center St
Cajon St

Hillside Memorial Park
W Sunset Dr
Garden St

Smiley Blvd
Quincy St
Locust Ave
Blvd

E Citrus Ave
Highland Ave
5th Ave
S Wabash Ave

E Sunset Dr N
E Sunset Dr S

Quincy St
Locust Ave

Sand Canyon
Overcrest St
Yucaipa Blvd
Avenue D
Colorado St
Avenue E
Avenue G
Avenue H

Woodhouse Ln
Palmer Ave
Oak

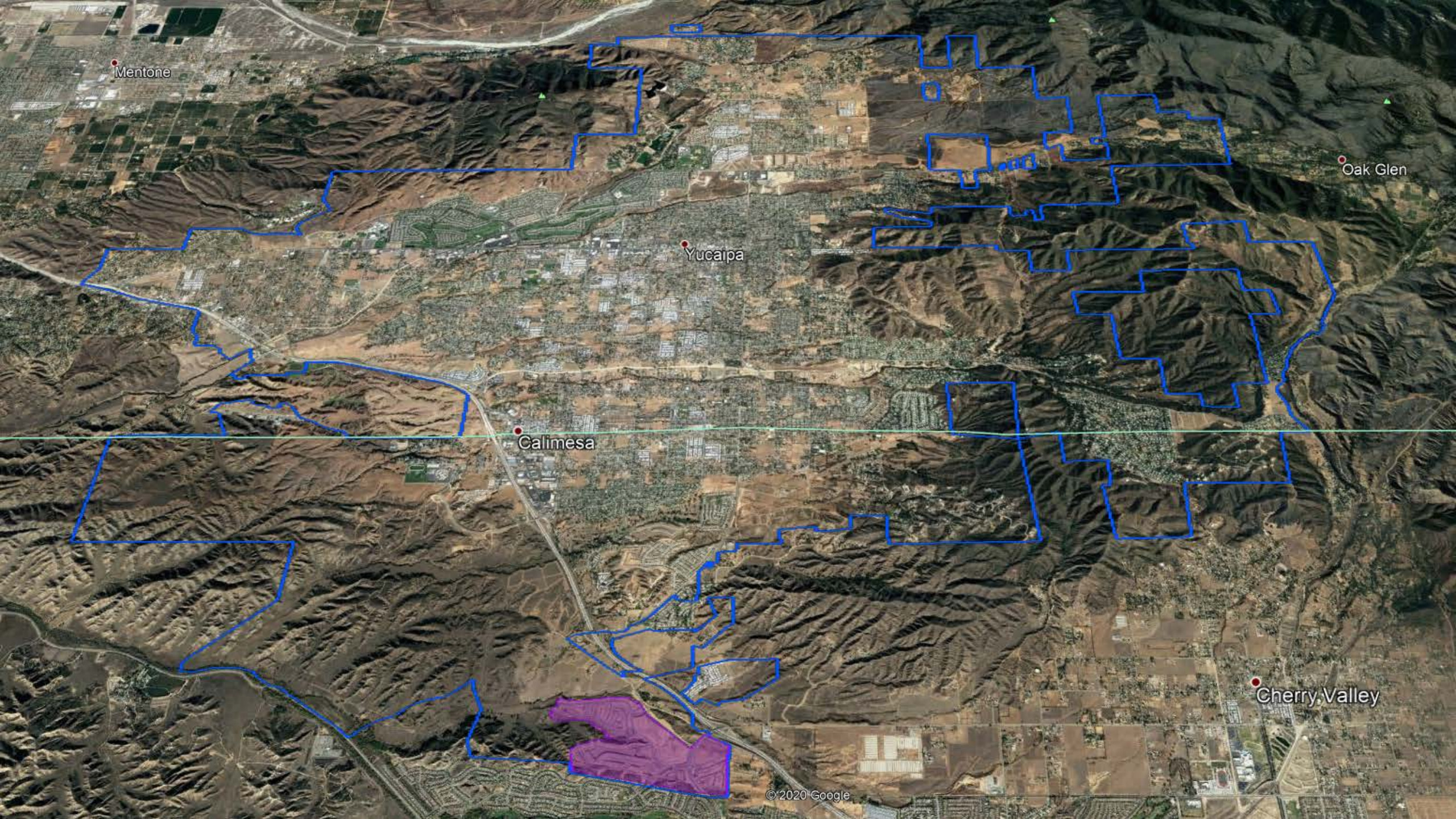
Yucaipa Regional Park
Bryant St
Douglas St
California St
Wildwood Canyon Rd

Myrtlewood Dr
Garden Air Golf Course
Singleton
Cherry Valley Blvd
Palmer Ave
Champions Dr

Wilson Creek
Oak Glen Creek
Oak Glen Rd
Birch Creek
Potato C

Pisgah Peak Spur
Pisgah Peak Rd
Wildwood Canyon State Park
Mesa Grande Dr
Canyon Dr

Orchard St
Vineland St
Brookside Ave
View Dr
Cherry Ave
Cougar Wa



Mentone

Oak Glen

Yucaipa

Calimesa

Cherry Valley

Summerwind Trails

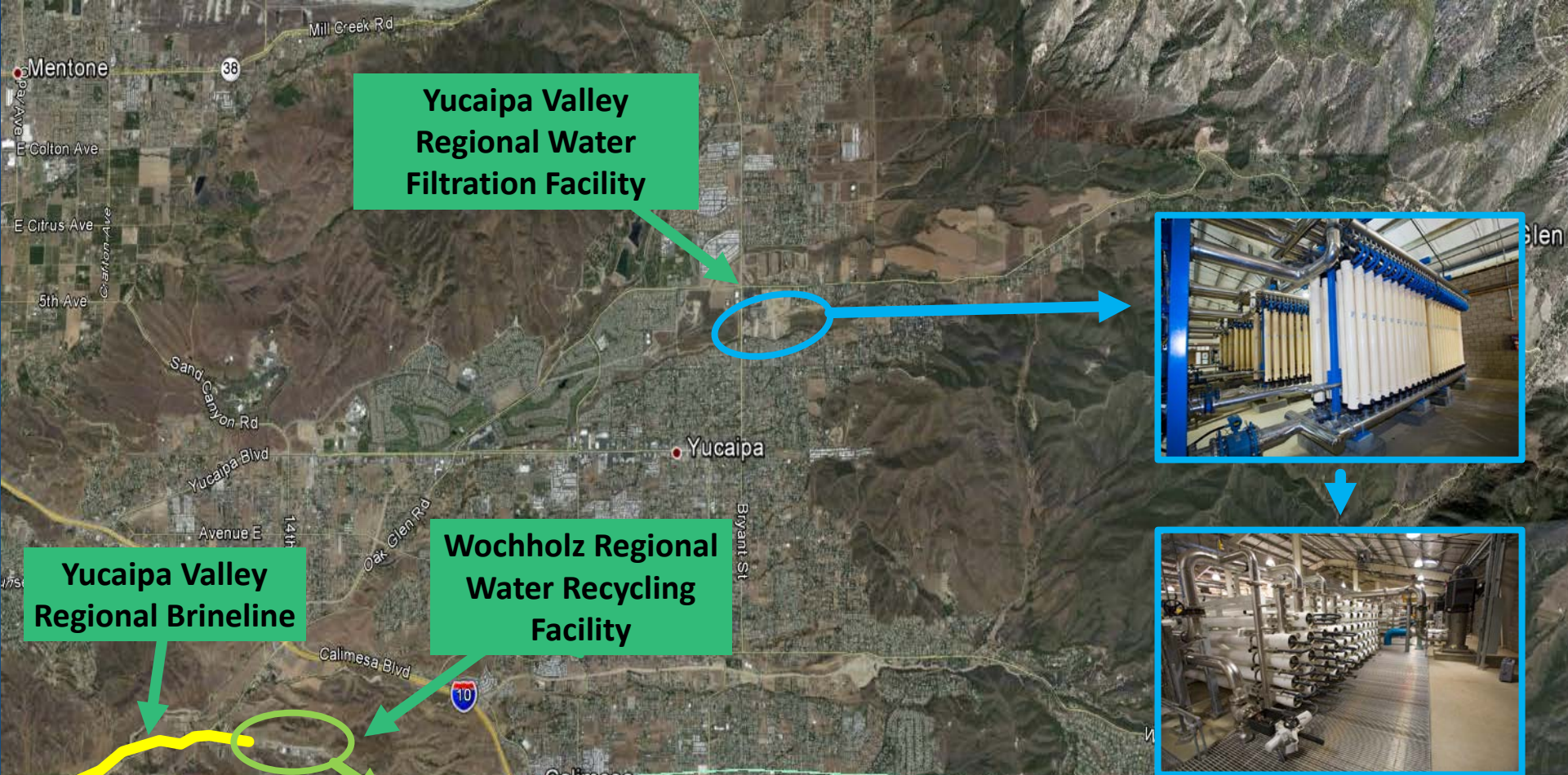
- 3,700 single and multi-family homes, public landscaping, large commercial areas, parks and schools
- All homes dual plumbed with a potable water meter and recycled water meter for front and backyard irrigation.





Recycled Water Regulations

Title 17	Title 22
Defines responsibilities for protection of public water systems	Identifies treatment and effluent quality requirements
Requires Site Supervisor	Defines allowable uses
Requires backflow protection	Reporting and record keeping
<p>*AB 1671 A policy handbook to be adopted by the state board. Title 17 of the California Code of Regulations shall become inoperative and replaced by the handbook.</p>	Design requirements, inspections, and testing



**Yucaipa Valley
Regional Water
Filtration Facility**

**Yucaipa Valley
Regional Brineline**

**Wochholz Regional
Water Recycling
Facility**





FOUR STEPS

To Modifying Your Outdoor Water Use

A guide to meeting Residential Recycled Water Plan requirements



Doing our part for water conservation

As part of a statewide effort to conserve water, all homeowners must follow a four-step process to modify their home's existing landscaping and irrigation.



RESIDENTIAL RECYCLED WATER PLAN CHECKLIST

PLAN SUBMITTALS

All plans submitted to the District for review and approval must include the following information*:

- Full site address with owner's name(s).
- General property layout with labels indicating limits of property, including basic footprint of structures, concrete pads/walkways, pools/spas, outdoor kitchen areas, etc.
- Clearly drawn and labeled existing and planned water line locations (e.g., "Exist. Pot.", "Fut. Pot.", "Exist. Irrig.", "Fut. Irrig.")
- Potable drinking water lines must be drawn in blue.
- Recycled irrigation water lines must be drawn in purple.
- Identify areas for water usage (e.g., fountains, water features, food prep/BBQ area, etc.). Remember that recycled water is restricted to landscape irrigation use only.
- Overhead spray irrigation requires a five-foot buffer zone around structures and a two-foot buffer zone around any hardscapes (no buffer zone is required for drip irrigation).

*This is a partial list only. For complete requirements, see the District's standards.

Thank you for conserving water and contributing to the sustainability of our local resources. Should you have any questions or concerns, please feel free to contact the District at (909) 797-5117.

CONSTRUCTION AND OPERATION REMINDERS

- Purple pipe/tubing is required for all recycled water irrigation lines.
- Identification tags must state: "Warning Recycled Water—Do Not Drink," in both English and Spanish. These tags are required on all valves, control valves, strainers, master control valves, pressure reducing valves, etc.
- All recycled water pipes are required to have purple identification tape, while all potable water pipes are required to have blue identification tape. To ensure that it does not slip off, tape must be affixed to the top of the pipes at all angle joints and then along the pipe every five feet.
- Overhead spray irrigation operation is restricted to the hours of 9:00 pm to 6:00 am.
- Recycled water shall not leave the site. It is the responsibility of the owner/tenant to prevent water runoff by promptly addressing overwatering (ponding) and repairing water line breaks.
- Copper pipe is required for all drinking water lines from the home to any outdoor custom water features (e.g., outdoor kitchens, pools, saunas, and fountains).
- All homeowners and tenants are required to attend a District Recycled Water Site Supervisor Training Class. Backyard landscape designers and installers take a separate class. Call the District for the latest training schedule to schedule a training.



FOUR STEPS

To Modifying Your Outdoor Water Use

Follow this guide for required Residential Recycled Water Plan approvals. Your HOA and the Water District will assist you each step of the way.



PREPARE DESIGN-BUILD DRAWINGS

As part of the state's water conservation requirements, homeowners in dual-plumbed communities wishing to make changes to their home's existing landscape and irrigation systems must prepare design concept drawings that follow the Residential Recycled Water Plan's design and construction guidelines. These guidelines are provided to the homeowner at the time of home purchase and are also available from the Yucaipa Valley Water District.

Questions about preparing your design-build drawings? Contact the District at: (909) 797-5117.



SUBMIT YOUR DESIGN

Submit your completed design-build drawings to your HOA for review to ensure conformance to the Residential Recycled Water Plan's design and construction guidelines.

Once your drawings have been reviewed by the HOA, they will be submitted to the District for comment, corrections, and final approval.

3



REVIEW AND REVISION PROCESS

After reviewing your plan, the District will send any comments or corrections back to you through your HOA. While it may take a few review and revision cycles to achieve a final plan that fully meets the Residential Recycled Water Plan's requirements, the District will make every attempt to ensure a smooth and timely process.

Once your design has been approved for construction, the District will sign or stamp your plans and return them to the HOA, who will give the final go-ahead.

4



SCHEDULE MEETINGS PRIOR TO CONSTRUCTION AND PIPING BACKFILL

After your design is approved, schedule a pre-job meeting with the District staff before construction begins.

Once construction has begun but prior to covering piping, schedule one final inspection with the District.

To schedule meetings and inspections, call (909) 797-5117. Please keep in mind that the District requires two days' notice prior to the inspection.



STAYING EFFICIENT AND SAFE

To ensure that your home continues to meet recycled water use requirements, the District will perform an inspection of your front and backyard landscape irrigation each year and conduct a cross-connection test every three years.

Any adjustments or corrections needed will be noted on the correction inspection forms and returned to you for your use and records.



OVERHEAD SPRAY APPLICATION - 2-FOOT SET BACK FROM ALL HARDSCAPE (CONCRETE) AND 5- FEET FROM STRUCTURES(HOME). DRIP APPLICATION OK.

OPEN AREA TO BE TALL FESCUE SOD W/ RECYCLED WATER IRRIGATION

REAR P

BUILDER INSTALLED DRAINAGE PATTERN

NEW GRAY BROOM FINISH CONCRETE SIDEWALK

MULCH AREA TO COVER DIRT

12' X 35' SOLID ALUM. PATIO COVER W/ 2 FANS & 6 LED LIGHTS
*COLD TO BE BROWN & BEIGE.

SERRATT RESIDENCE
1008 DAHLIA CT.
CALIFORNIA, CA 92320

VINYL FENCE/GATE

ALL NEW VALVE BOXES ARE REQUIRED TO BE PURPLE FOR RECYCLED WATER.

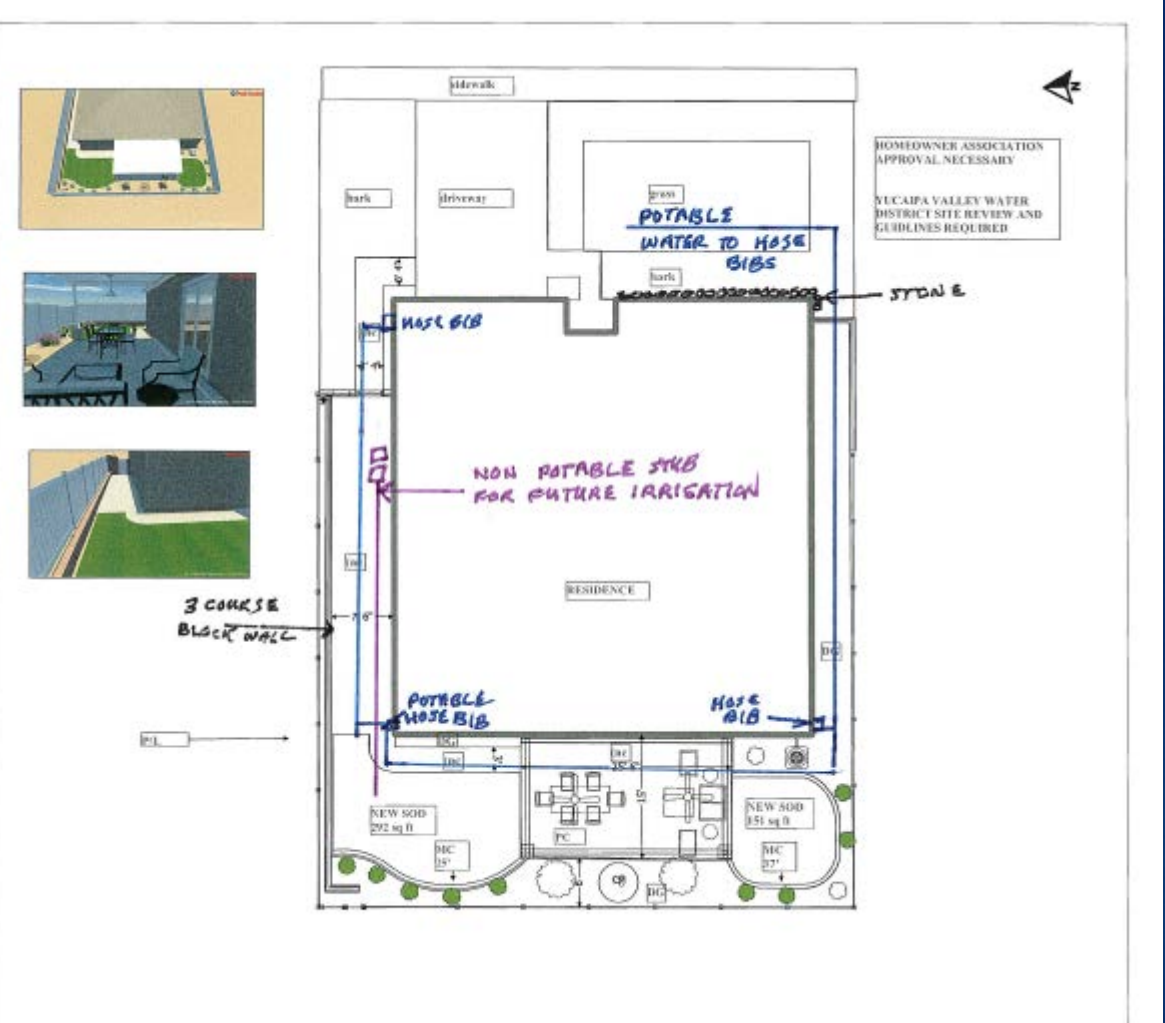
NEED TO IDENTIFY METHOD/TYPE OF IRRIGATION:
-OVERHEAD SPRAY(POPUP, MP ROTATOR, ETC.)
-DRIP IRRIGATION

IDENTIFY IRRIGATION LINE MATERIAL (PVC OR DRIP TUBING)
ALL IRRIGATION LINE MATERIAL IS TO BE PURPLE AND FOR RECYCLED WATER.
RECYCLED WATER WARNING TAPE FOR THE LENGTH OF THE PVC AND AFFIXED TO THE PIPE WITH TAPE EVERY 5- FEET AND AT ALL ANGLE JOINTS

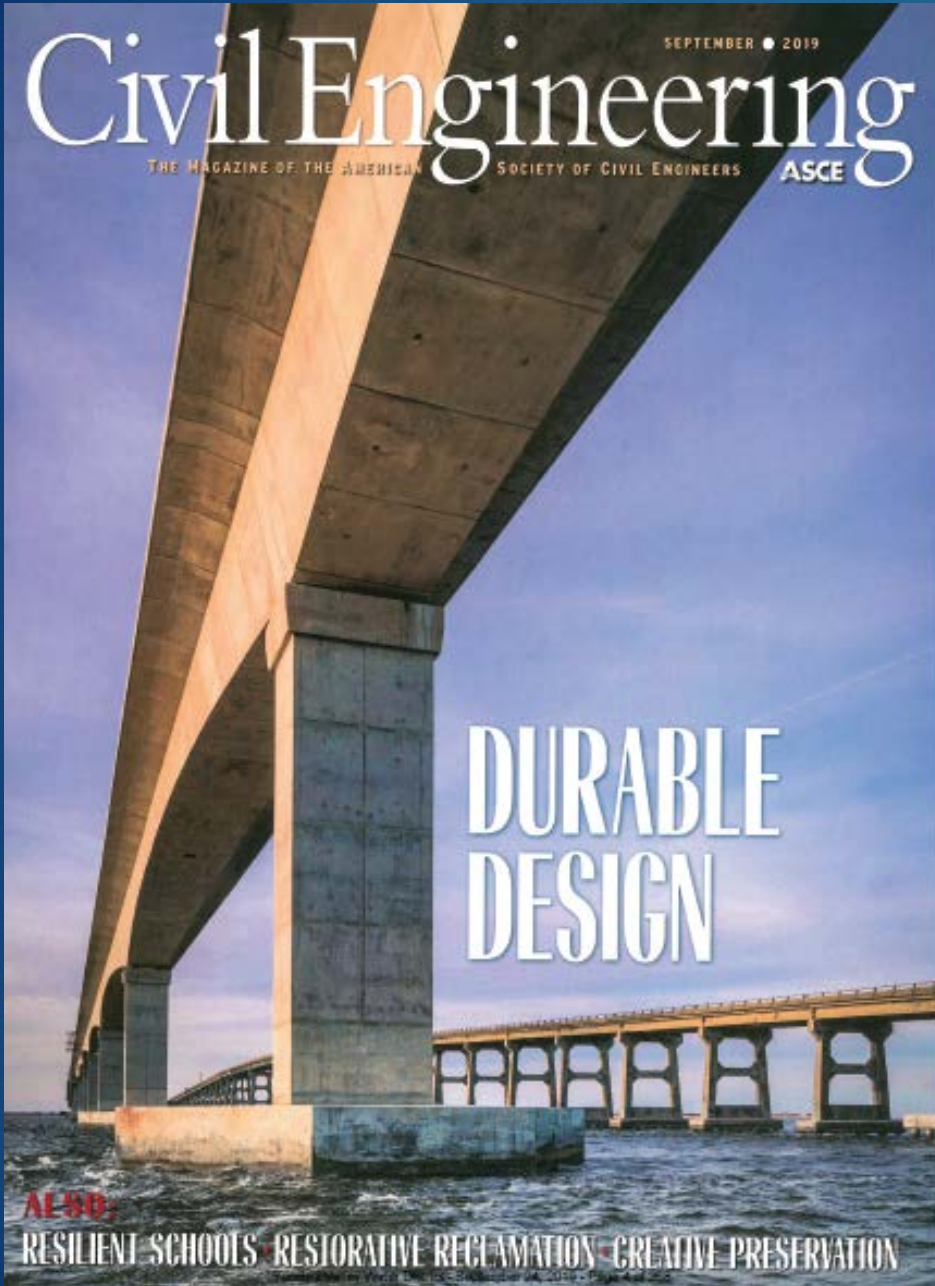
OVERHEAD SPRAY (POPUP, MP ROTATOR, ETC.) REQUIRED TO HAVE MANUFACTURERS PURPLE HEAD OR APPLY RECLAIMED WATER SNAP CAP FOR IDENTIFICATION.

All irrigation to be drip tubing. No distance requirements needed. All questions were answered by homeowner.

FRONT PL







CIVIL ENGINEERING NEWS | SUSTAINABILITY

California Housing Development Will Rely Heavily on Recycled Water



A NEW MASTER-PLANNED community under construction in Southern California has been designed to use recycled water to meet all its nonpotable needs, including the irrigation of private residences' yards. Featuring a dual-plumbed system for distributing potable and nonpotable water, the 2,600-acre Summerwind Trails community in Calimesa, California, is expected to require significantly less treated drinking water compared with similarly sized developments.