

**SAN GORGONIO PASS WATER AGENCY**  
**1210 Beaumont Avenue, Beaumont, CA**  
**Board of Directors Engineering Workshop**  
**Agenda**  
**December 14, 2020 at 1:30 p.m.**

IN AN EFFORT TO PREVENT THE SPREAD OF COVID-19 (CORONAVIRUS),  
AND IN ACCORDANCE WITH THE GOVERNOR'S EXECUTIVE ORDER N-29-20,

**THERE WILL BE NO PUBLIC LOCATION FOR ATTENDING THIS  
BOARD MEETING IN PERSON.**

MEMBERS OF THE PUBLIC MAY LISTEN AND PROVIDE PUBLIC COMMENT TELEPHONICALLY  
BY CALLING THE FOLLOWING NUMBER: 669-900-6833 - Meeting ID: 834 9484 9626  
OR JOIN BY ZOOM: <https://us02web.zoom.us/j/83494849626>

**1. Call to Order, Flag Salute and Roll Call**

**2. Public Comment:** Members of the public may address the Board at this time concerning items relating to any matter within the Agency's jurisdiction. Speakers are requested to keep their comments to no more than five minutes. Under the Brown Act, no action or discussion shall take place on any item not appearing on the agenda, except that the Board or staff may briefly respond to statements made or questions posed for the purpose of directing statements or questions to staff for follow up.

**3. Report on Water Conditions**

**4. Update on Fire and Preventative Actions**

**5. Report on Cherry Valley Pump Station Incident**

**6. Announcements:**

- A. Regular Board Meeting, December 21, 2020 at 1:30 p.m.  
– Teleconference/Zoom
- B. Office closed December 24<sup>th</sup> & 25<sup>th</sup>, 2020 in observance of the  
Christmas Holiday
- C. Cancelled – Finance and Budget Workshop, December 28, 2020

**7. Adjournment**

**\*Information included in Agenda Packet**

(1) Materials related to an item on this Agenda submitted to the Board of Directors after distribution of the agenda packet are available for Public inspection in the Agency's office at 1210 Beaumont Avenue, Beaumont during normal business hours. (2) Pursuant to Government Code section 54957.5, non-exempt public records that relate to open session agenda items and are distributed to a majority of the Board less than seventy-two (72) hours prior to the meeting will be available for public inspection at the Agency's office, located at 1210 Beaumont Avenue, Beaumont, California 92223, during regular business hours. When practical, these public records will also be made available on the Agency's Internet Web site, accessible at <http://www.sgpwa.com>. (3) Any person with a disability who requires accommodation in order to participate in this meeting should telephone the Agency (951 845-2577) at least 48 hours prior to the meeting in order to make a request for a disability-related modification or accommodation.

# Water Conditions Update



Engineering Workshop  
December 14, 2020



**Weather  
&  
Reservoir  
Conditions**

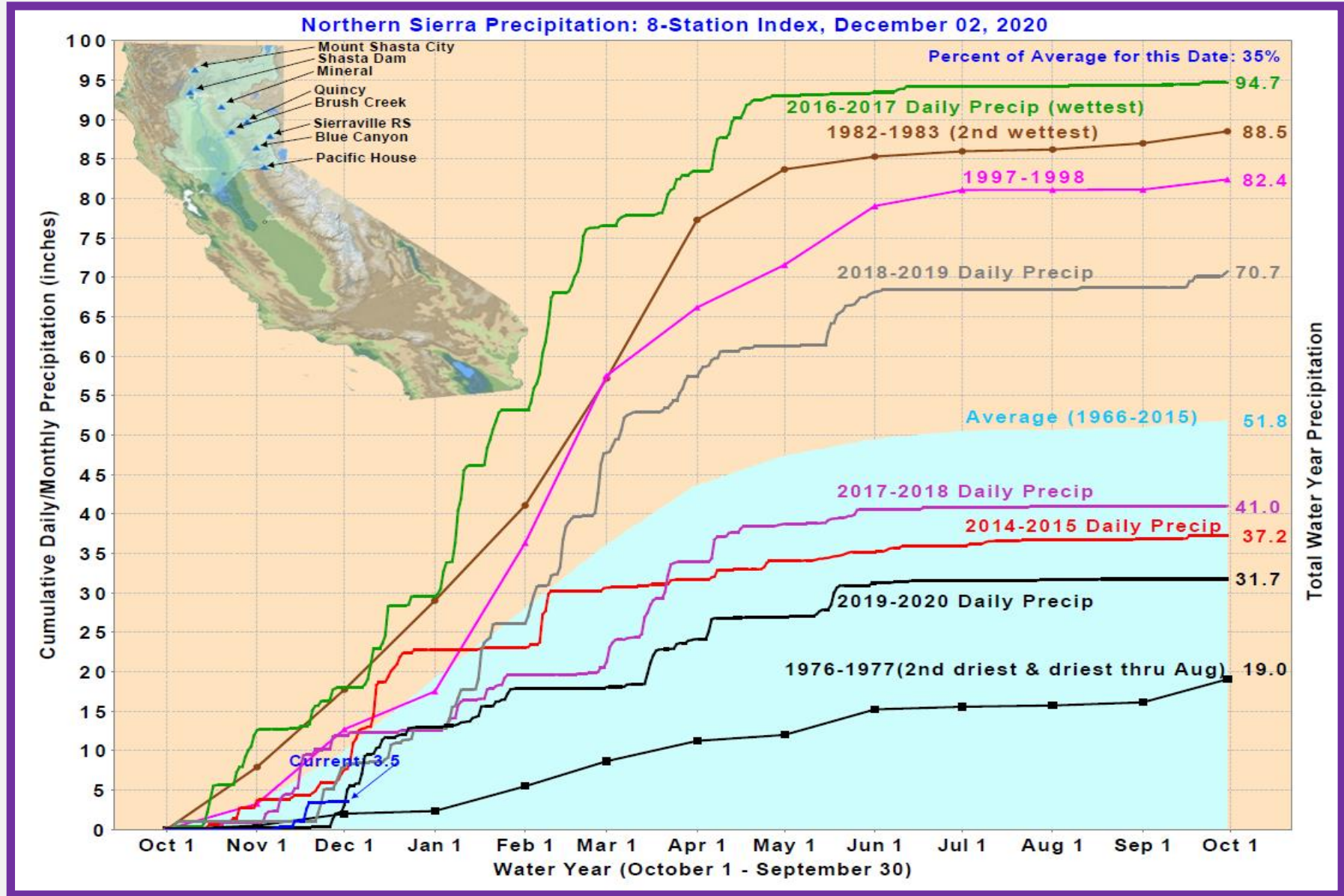
**Forecasted  
Hydrologic  
Conditions**

**2021  
Requests**

**SWP  
Allocation**



# **Discussion**



# State Precipitation Stations



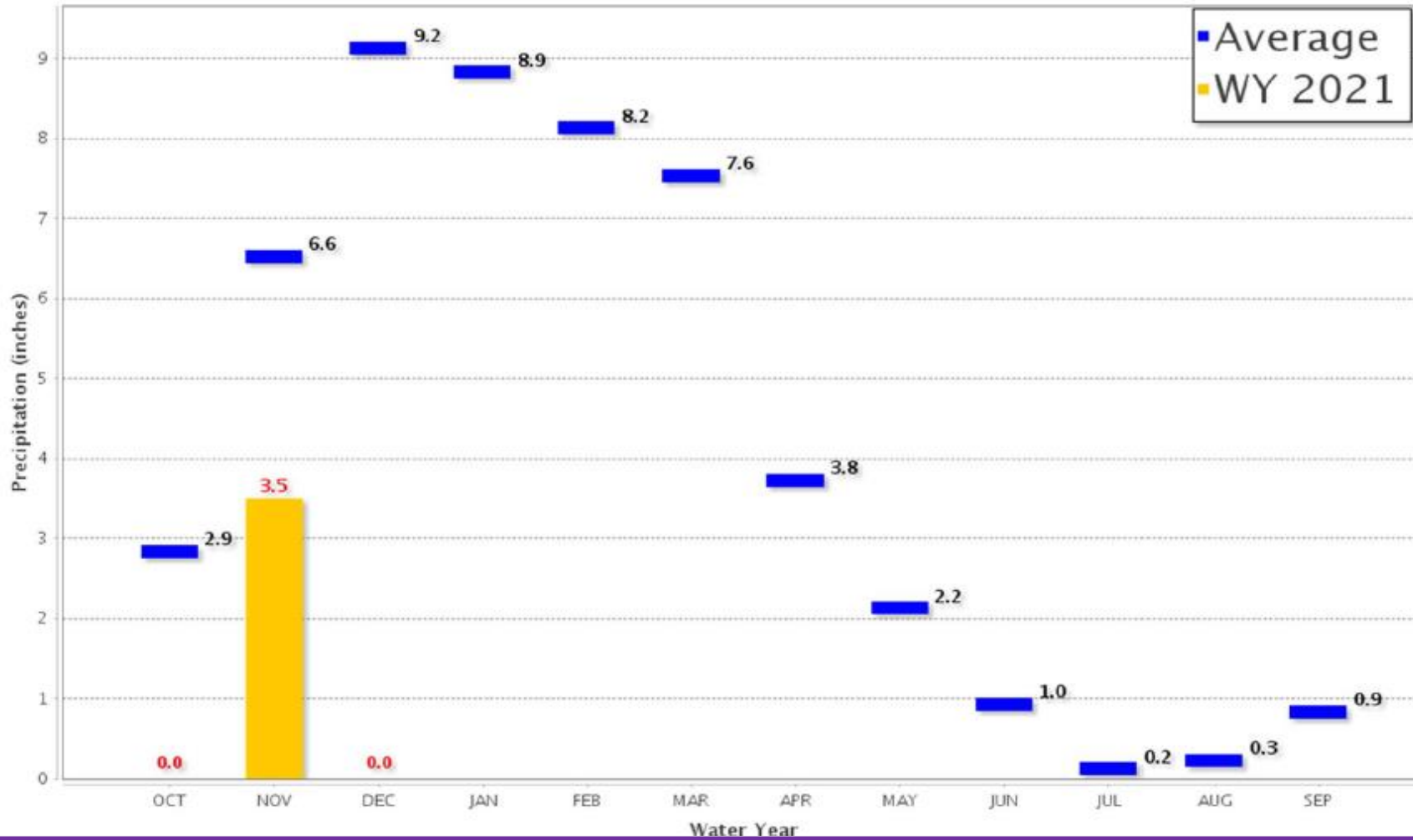


# Northern Sierra 8-Station

Precipitation Index for Water Year 2021 - Updated on December 2, 2020 08:35 AM

Note: Monthly totals may not add up to seasonal total because of rounding

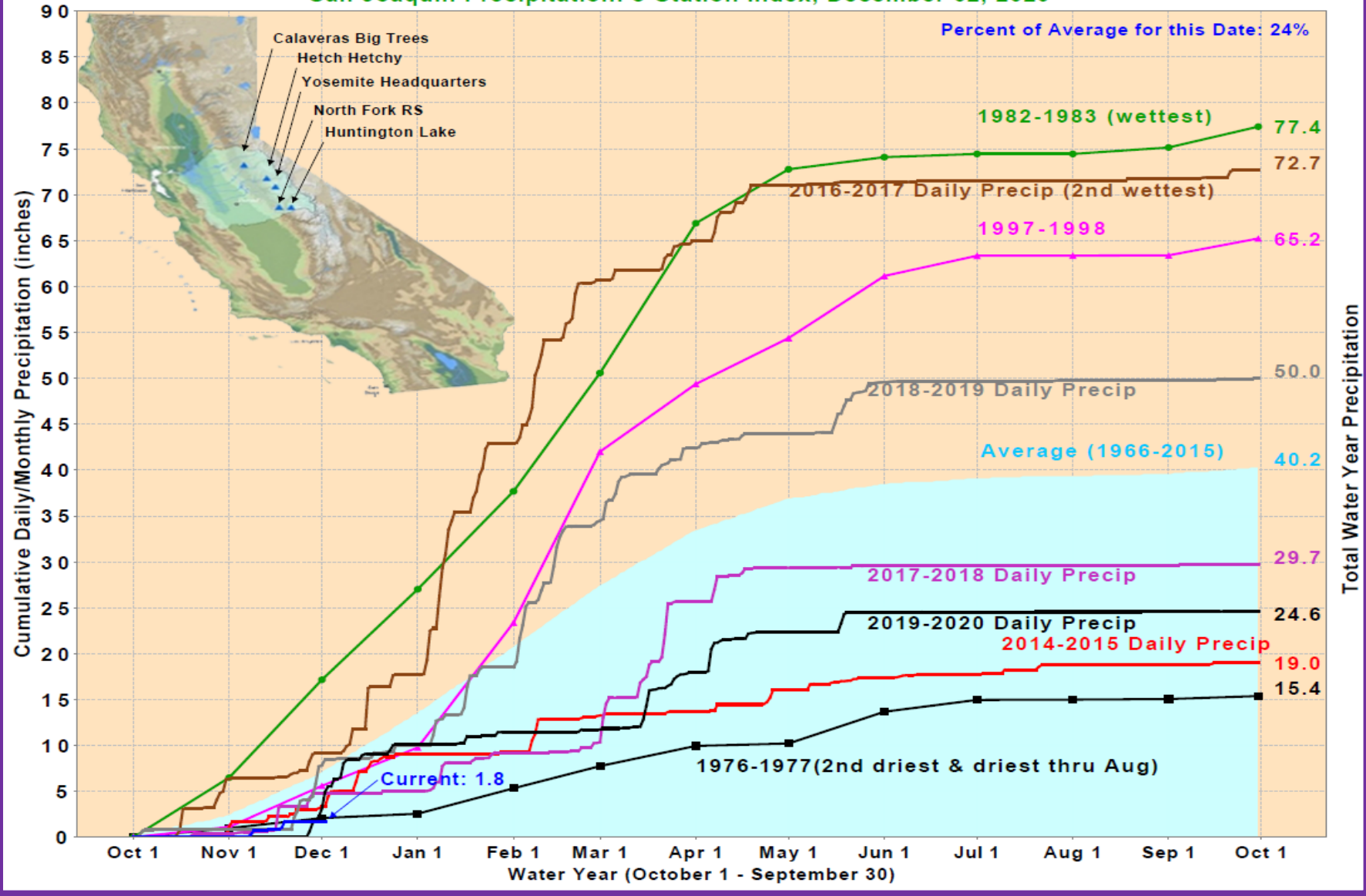
Water Year Monthly totals are calculated based on Daily precipitation data from 12am to 12am PST



## State Precipitation Stations



### San Joaquin Precipitation: 5-Station Index, December 02, 2020



# State Precipitation Stations

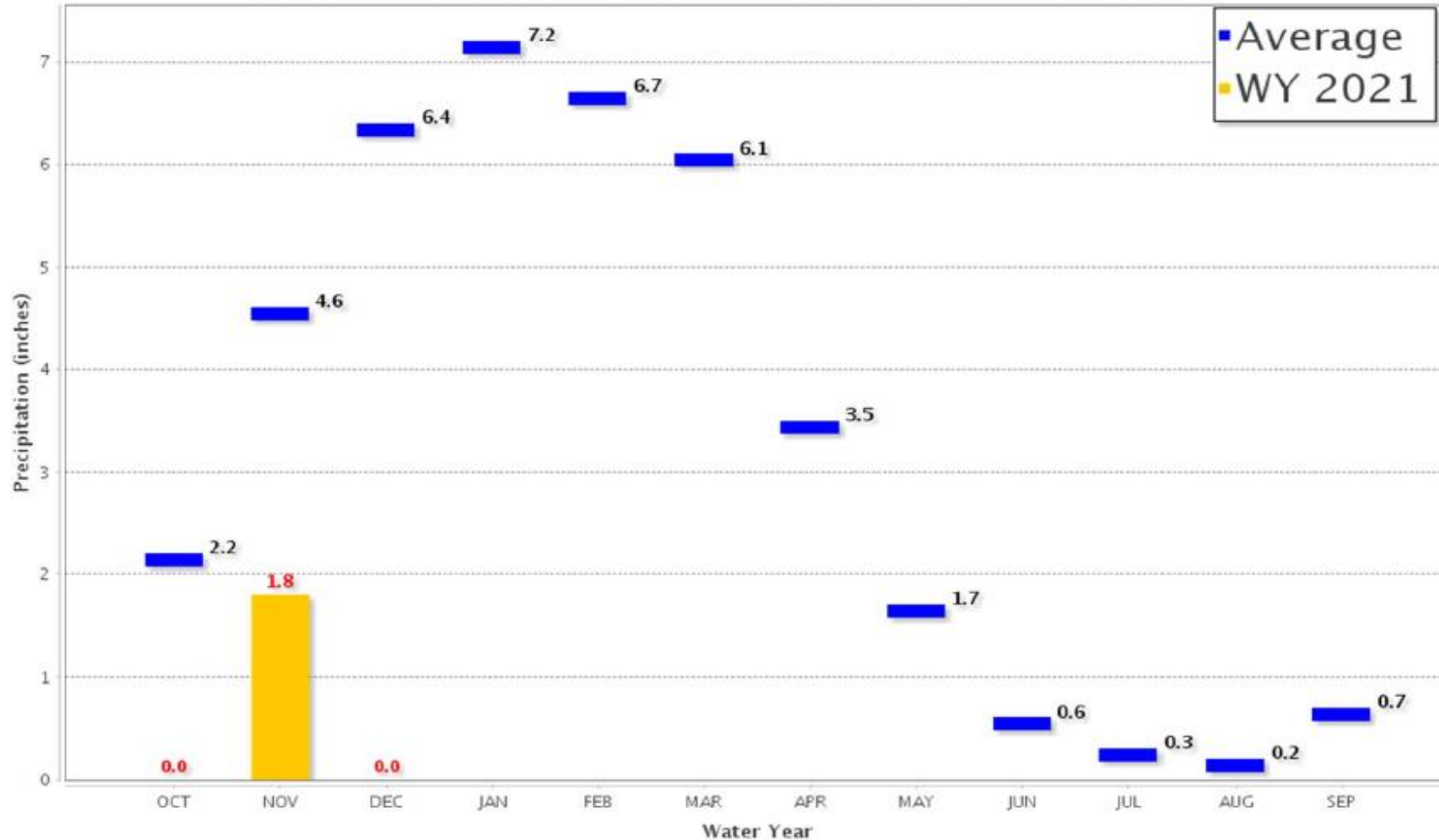


# San Joaquin 5-Station

Precipitation Index for Water Year 2021 - Updated on December 2, 2020 08:35 AM

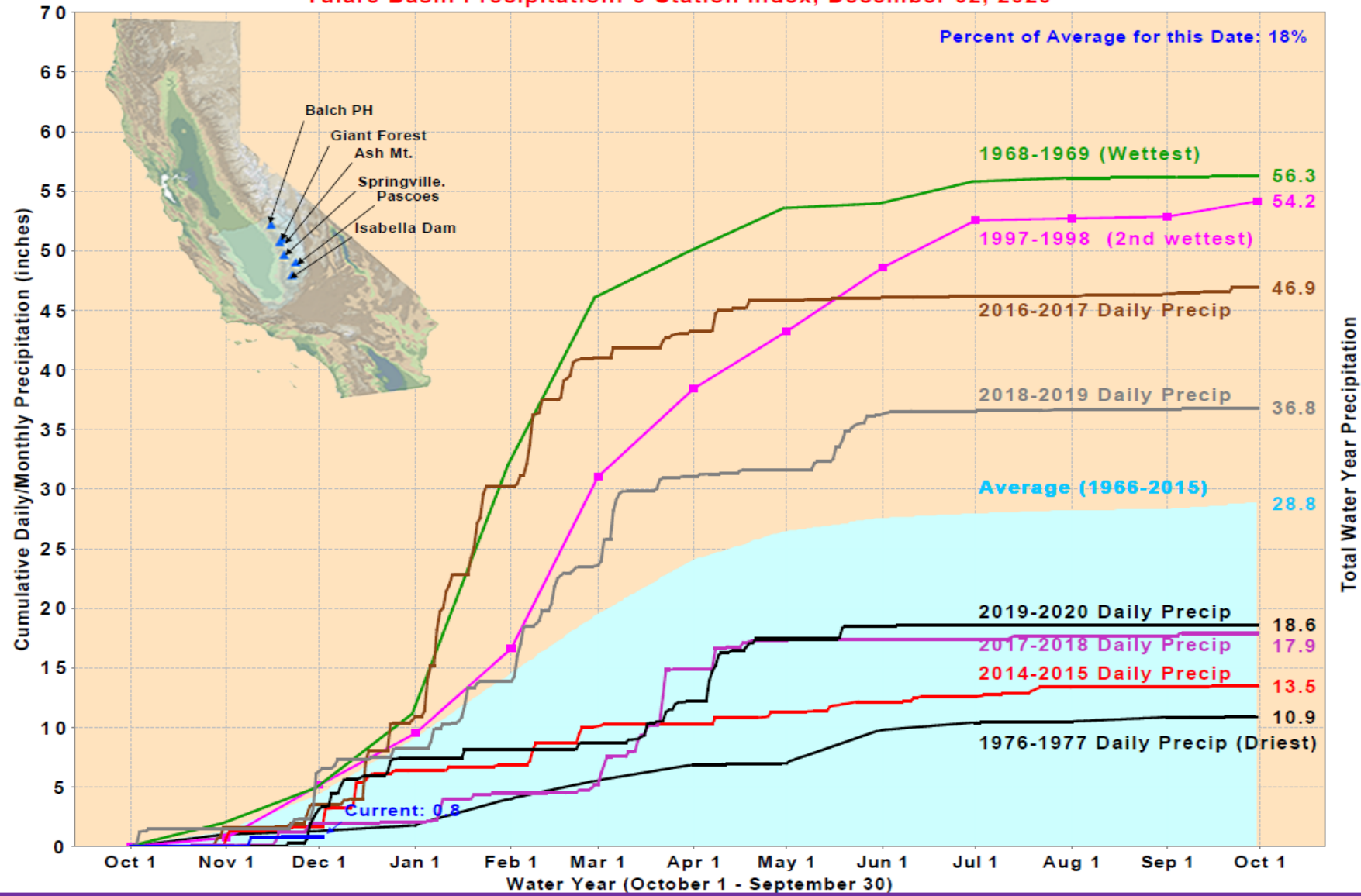
Note: Monthly totals may not add up to seasonal total because of rounding

Water Year Monthly totals are calculated based on Daily precipitation data from 12am to 12am PST



## State Precipitation Stations

### Tulare Basin Precipitation: 6-Station Index, December 02, 2020



# State Precipitation Stations



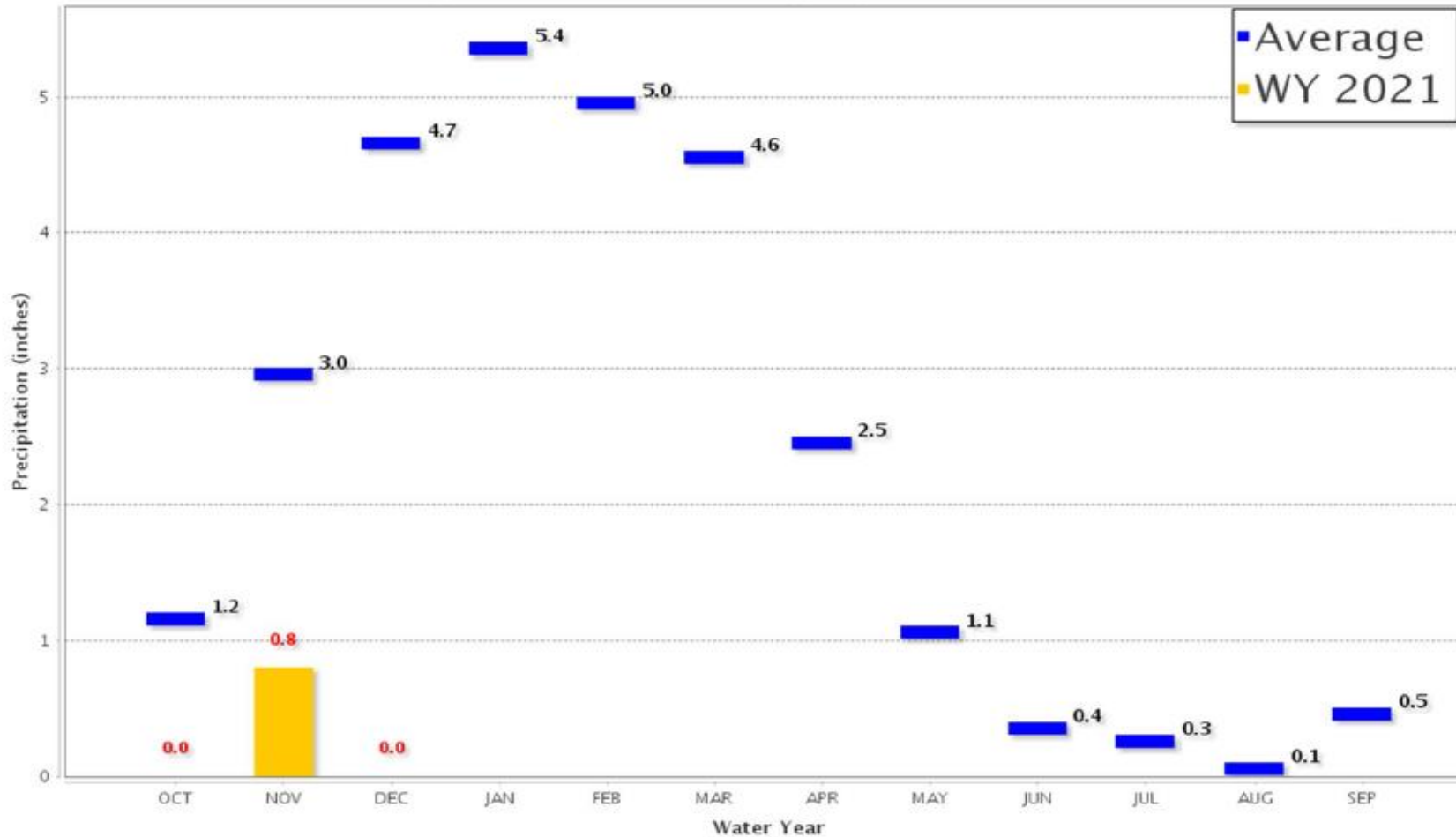


# Tulare Basin 6-Station

Precipitation Index for Water Year 2021 - Updated on December 2, 2020 08:35 AM

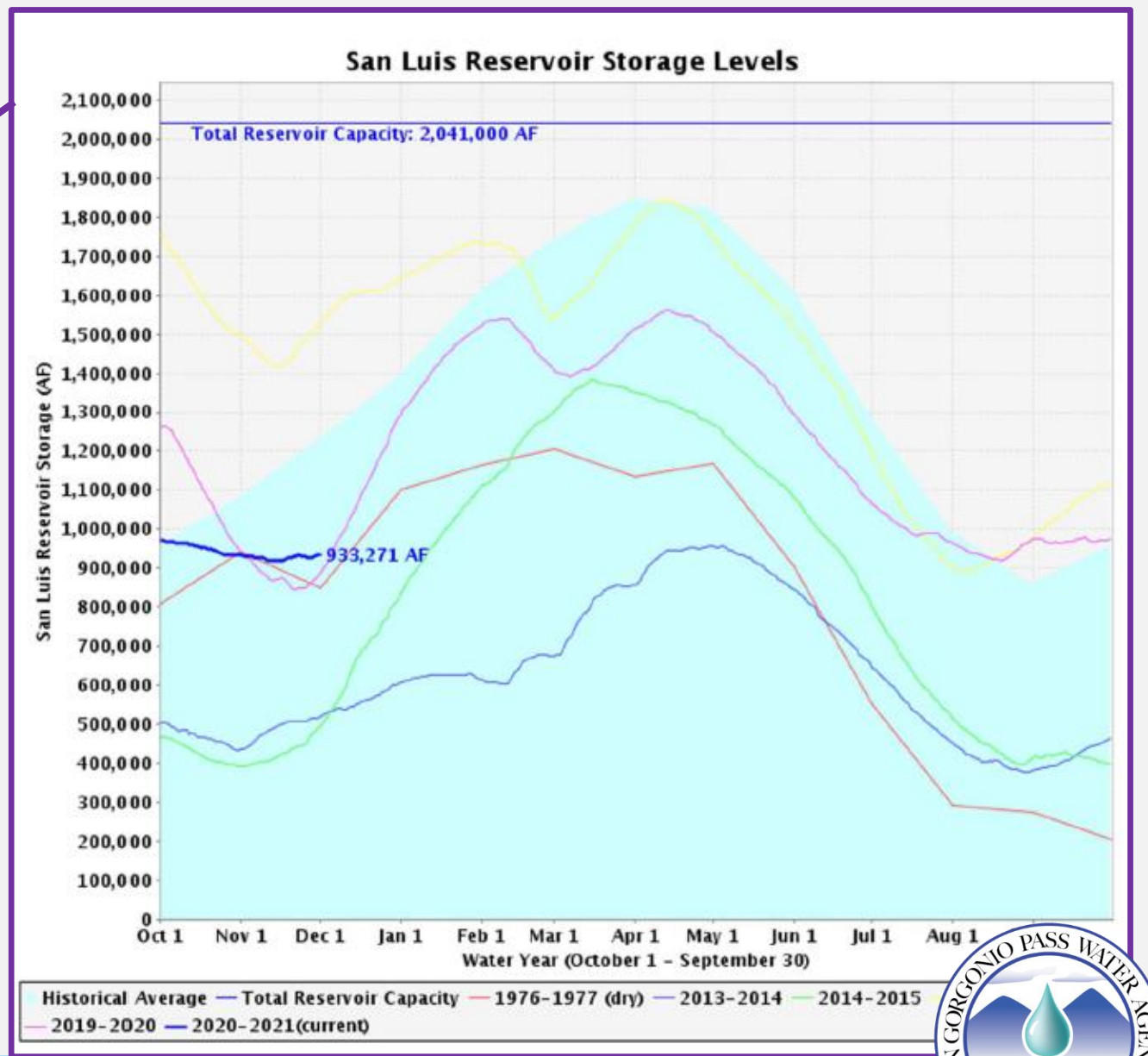
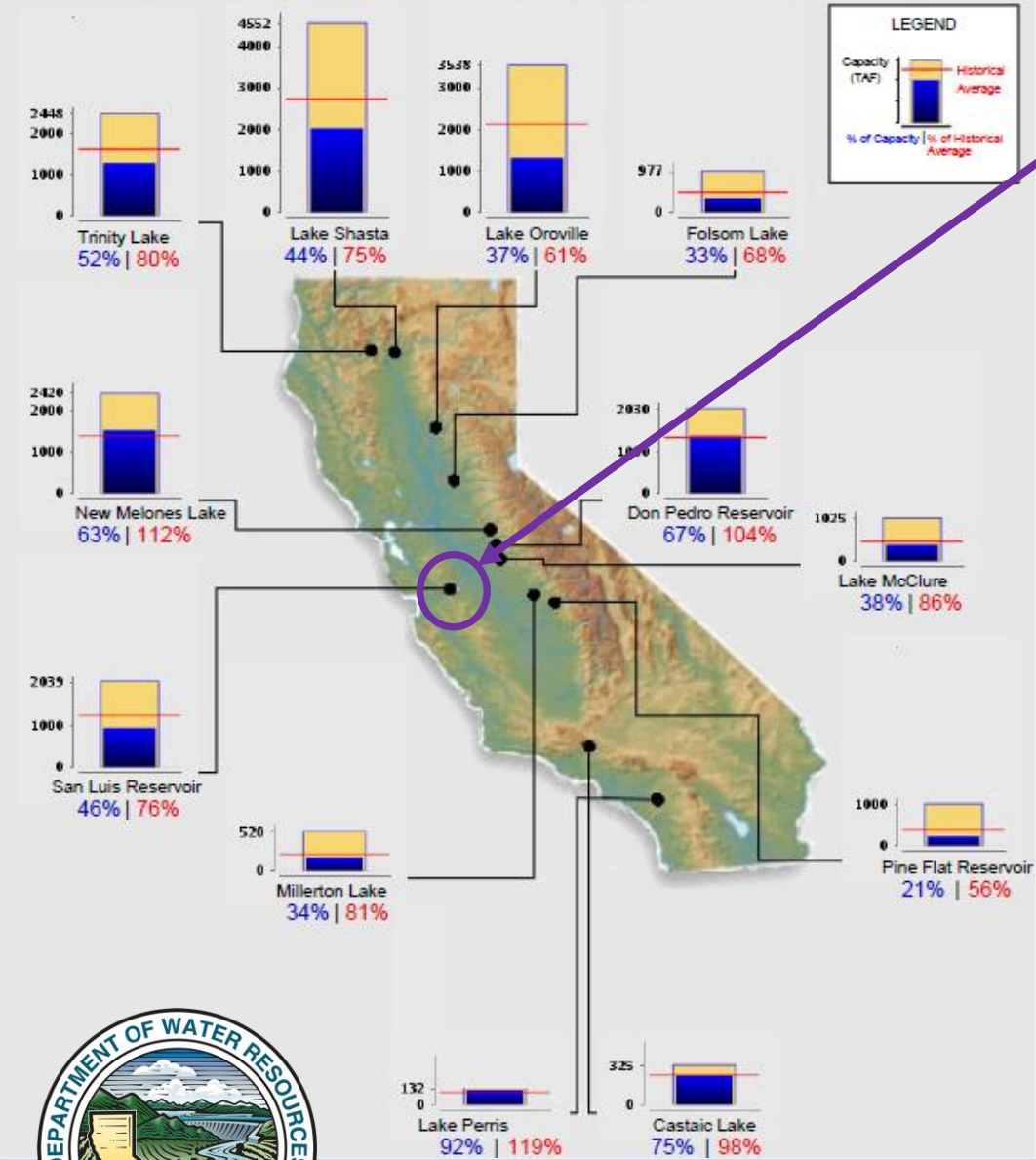
Note: Monthly totals may not add up to seasonal total because of rounding

Water Year Monthly totals are calculated based on Daily precipitation data from 12am to 12am PST



## State Precipitation Stations





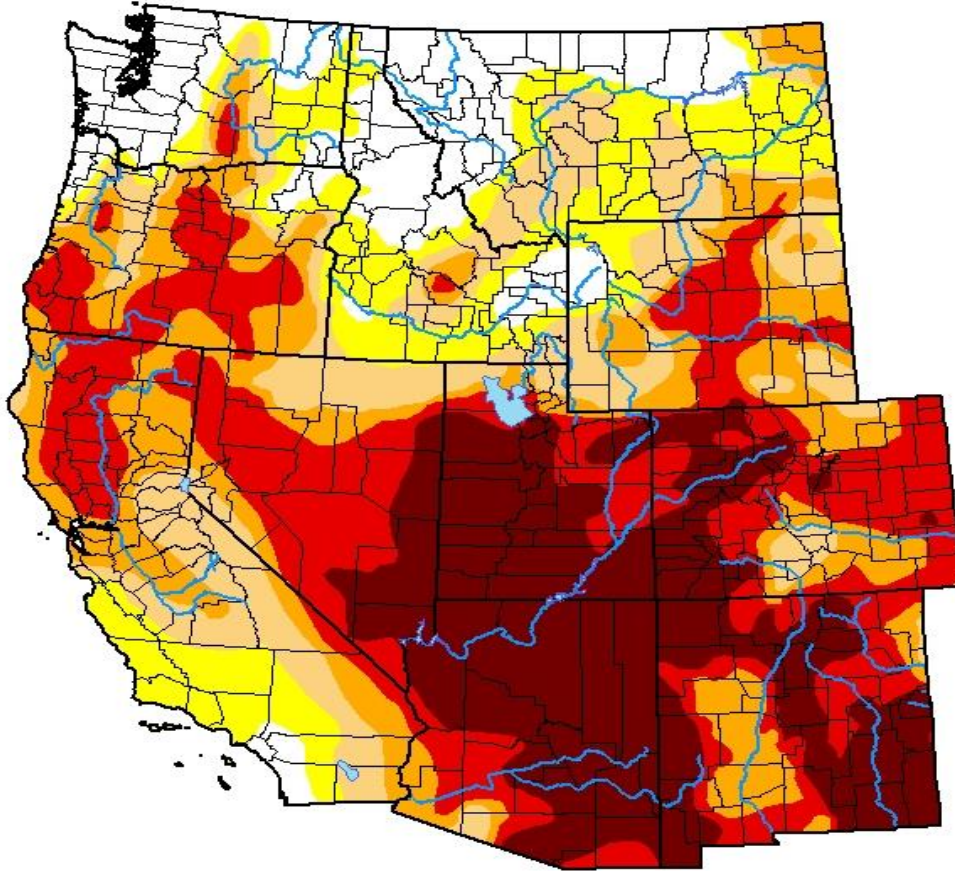
# Reservoir Conditions

# U.S. Drought Monitor West

**December 1, 2020**  
(Released Thursday, Dec. 3, 2020)  
Valid 7 a.m. EST

Drought Conditions (Percent Area)

	None	D0-D4	D1-D4	D2-D4	D3-D4	D4
<b>Current</b>	12.01	87.99	75.55	60.89	44.67	22.10
<b>Last Week</b> <i>11-24-2020</i>	11.06	88.94	75.60	60.85	44.08	19.48
<b>3 Months Ago</b> <i>09-01-2020</i>	14.82	85.18	67.60	49.49	18.03	0.03
<b>Start of Calendar Year</b> <i>12-31-2019</i>	59.17	40.83	18.17	7.12	0.00	0.00
<b>Start of Water Year</b> <i>09-29-2020</i>	8.51	91.49	76.07	54.55	33.11	2.31
<b>One Year Ago</b> <i>12-03-2019</i>	46.52	53.48	17.44	9.08	0.00	0.00



Intensity:

- None
- D0 Abnormally Dry
- D1 Moderate Drought
- D2 Severe Drought
- D3 Extreme Drought
- D4 Exceptional Drought

The Drought Monitor focuses on broad-scale conditions. Local conditions may vary. For more information on the Drought Monitor, go to <https://droughtmonitor.unl.edu/About.aspx>

Author:

Richard Heim  
NCEI/NOAA



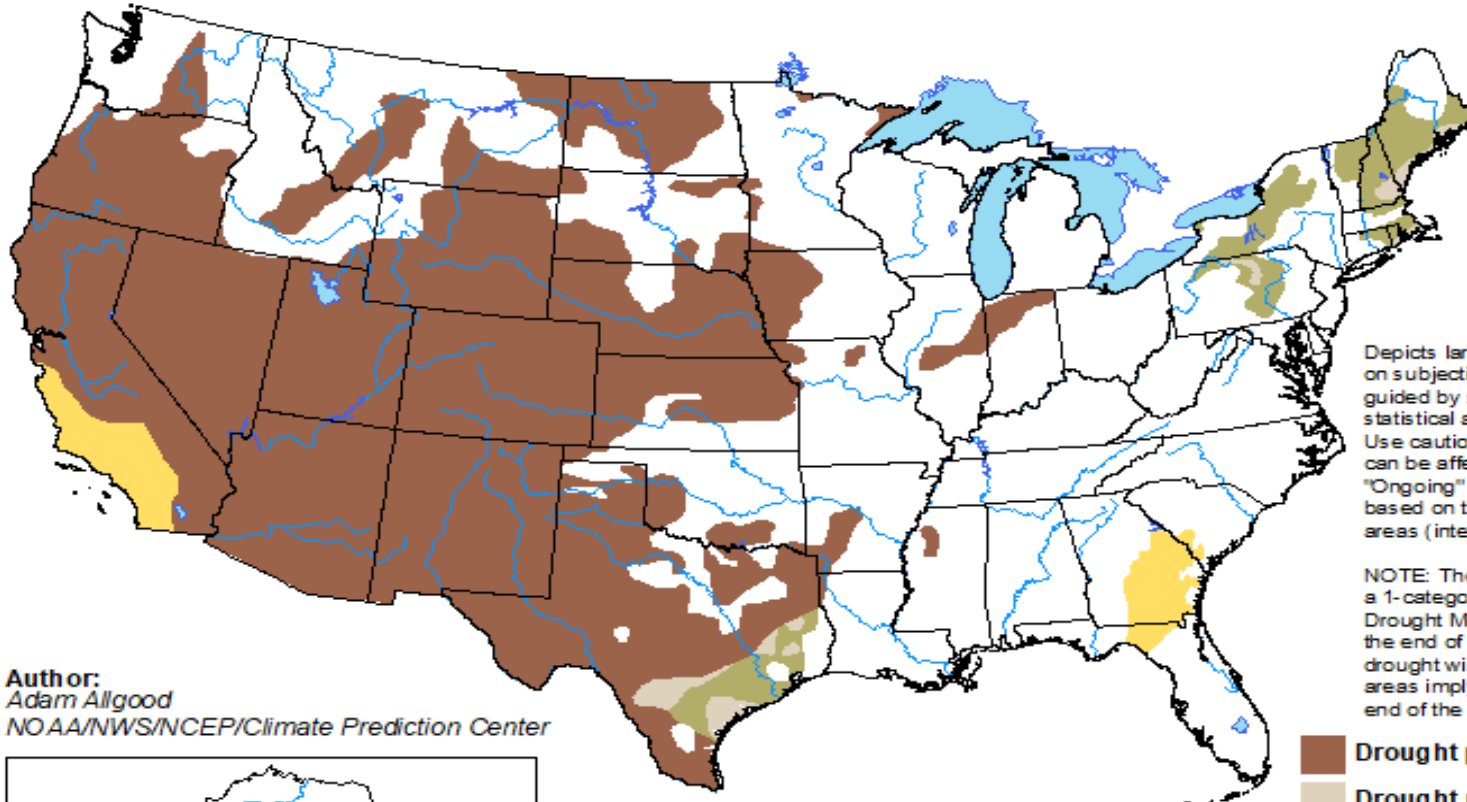
[droughtmonitor.unl.edu](https://droughtmonitor.unl.edu)



# U.S. Monthly Drought Outlook

## Drought Tendency During the Valid Period

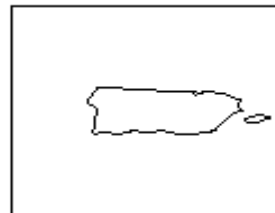
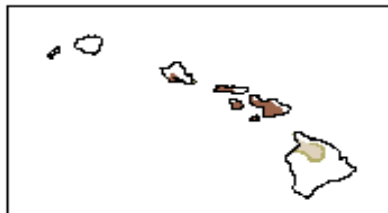
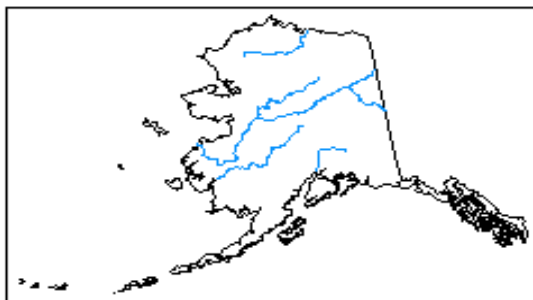
Valid for December 2020  
Released November 30, 2020







Depicts large-scale trends based on subjectively derived probabilities guided by short- and long-range statistical and dynamical forecasts. Use caution for applications that can be affected by short lived events. "Ongoing" drought areas are based on the U.S. Drought Monitor areas (intensities of D1 to D4).

NOTE: The tan areas imply at least a 1-category improvement in the Drought Monitor intensity levels by the end of the period, although drought will remain. The green areas imply drought removal by the end of the period (D0 or none).

Author:  
Adam Allgood  
NOAA/NWS/NCEP/Climate Prediction Center



-  Drought persists
-  Drought remains but improves
-  Drought removal likely
-  Drought development likely



<http://go.usa.gov/3eZGd>



# Total Current Order: 12,920 AF



## BCVWD

- 12,500 AF
  - 10,000 AF (Demands)
  - 2,500 AF (Banking)



## YVWD

- 220 AF



## City of Banning

- 200 AF



## SGPWA

- TBD (Future Supply)



# Water Order 2021

## NOTICE TO STATE WATER PROJECT CONTRACTORS



Date: DECEMBER 1, 2020

Number: 20-06

Subject: 2021 State Water Project Initial Allocation – 10 Percent

From:

*Ted Craddock*

Ted Craddock  
Deputy Director, State Water Project  
Department of Water Resources

The Department of Water Resources (DWR) is initially approving 422,848 acre-feet (AF) of Table A water for the long-term State Water Project (SWP) contractors in 2021. SWP supplies are projected to meet **10 percent** of most SWP contractors' requests for Table A water, which totals to be 4,172,786 AF. Attached is the initial 2021 SWP allocation table.

This initial allocation is made consistent with the long-term water supply contracts and public policy. DWR's approval considered several factors including existing storage in SWP conservation reservoirs, SWP operational constraints such as the conditions of the 2019 Biological Opinions for federally-listed species, the 2020 Incidental Take Permit for State-listed species and the 2021 SWP contractors' demands. DWR may revise this and **any subsequent allocations if warranted by the developing hydrologic and water supply conditions.**

To develop the 10 percent schedule, DWR will scale down the current long-term SWP contractors' 15 percent schedules that were submitted in October 2020 (as part of the initial requests), unless SWP contractors submit updated schedules. DWR will send the approved monthly water delivery schedules to the long-term SWP contractors.



# Current Allocation 10% (1,730 AF)

# 2020 Apple & El Dorado Fires

Brief Summary of 2020  
Fire Events and Update  
on Protective Actions

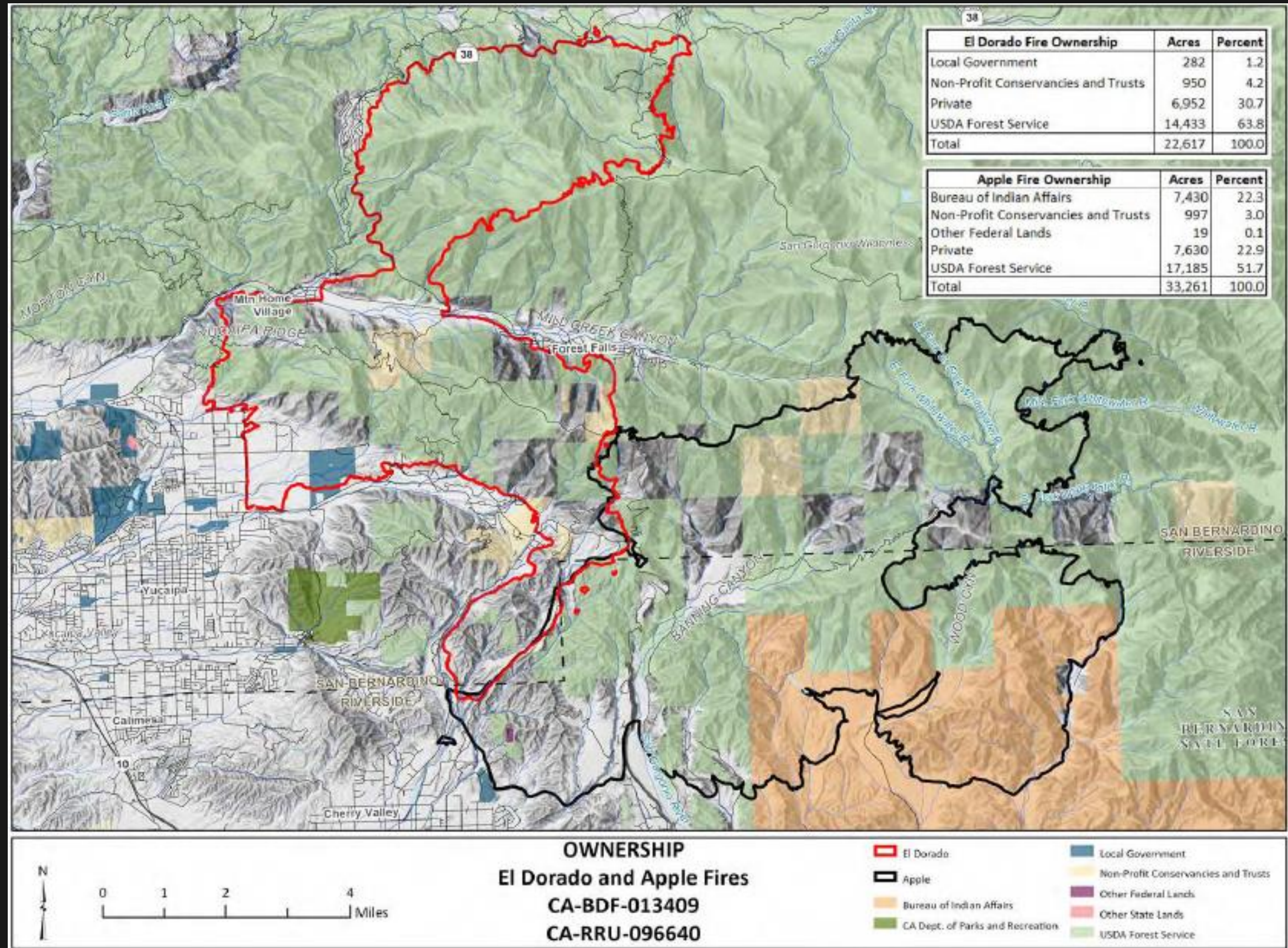


# Apple Fire

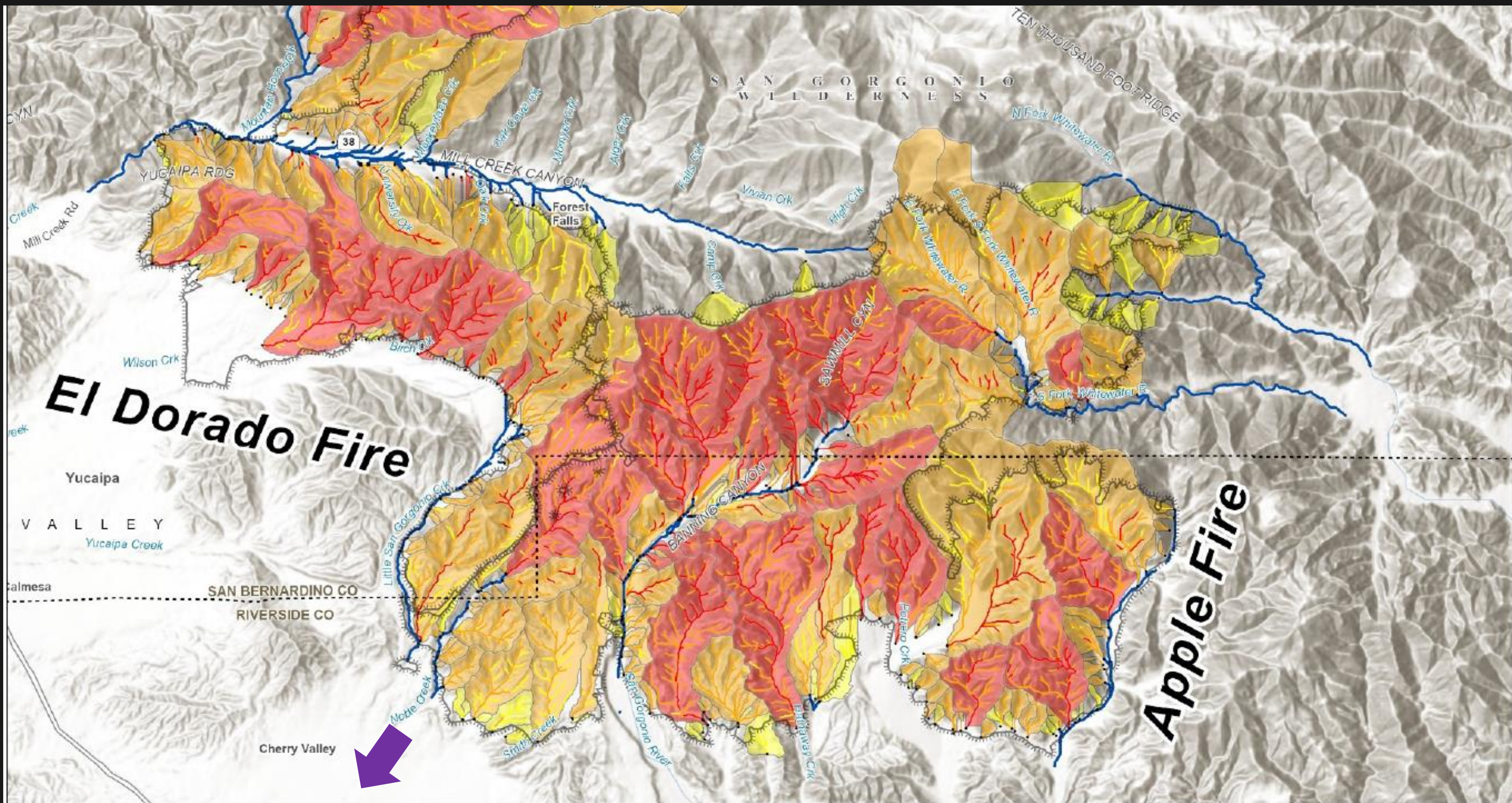
- Start Date: July 31, 2020
- Location: Oak Glen/Cherry Valley
- Burned: 33,424 Acres

# El Dorado Fire

- Start Date: September 5, 2020
- Location: Yucaipa/Oak Glen
- Burned: 22,744 Acres





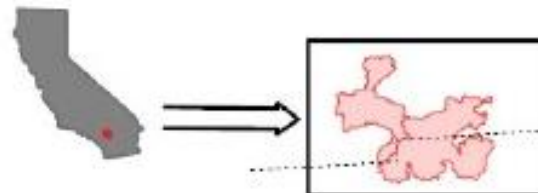


**Segment Combined Hazard**  
 15 min 24mm/hr  
 Low  
 Moderate  
 High

**Basin Combined Hazard**  
 15 min 24mm/hr  
 Low  
 Moderate  
 High

Fire Perimeter  
 USGS Watchstream  
 Basin Outlet

USGS Debris Flow  
 15 min 24 mm/hr  
 El Dorado Fire  
 Apple Fire  
 CA-BDF-013409  
 CA-RRU-096640



Data represents debris flow probability and volume as a combined hazard, based on response to a design rainstorm with a peak 15 minute rainfall intensity of 24mm/hr (1 in/hr).

USGS Watchstreams indicate potential sediment laden flood hazard as the basin area exceeds debris flow model limits.





## Erosion Potential

Average Erosion Rate for 2-year Storm Event  
2.3-4.6 tons/acre (Apple/El Dorado)

Maximum Erosion Rate for 2-year Storm Event  
18-23 tons/acre (Apple/El Dorado)

## Post-fire concerns are:

- High erosion events
- Potential debris flows
- Impacts on infrastructure
- Uncertain long-term effects on water supply



12/2020

Yucaipa

Calimesa

Wildwood Canyon Rd

Oak Glen Rd

Cherry Valley

Christopher Columbus Transcontinental Hwy

Palmer Ave/Valley Blvd

Redlands Fwy



Champions Dr

Brookside Ave

Oak View Dr

Highland Springs Ave

Oak Valley Pkwy

Moreno Valley Fwy

60

Beaumont Ave

E 8th St

79

Beaumont

Image © 2020 Maxar Technologies

E 1st St

W Ramsey St

W Lincoln St

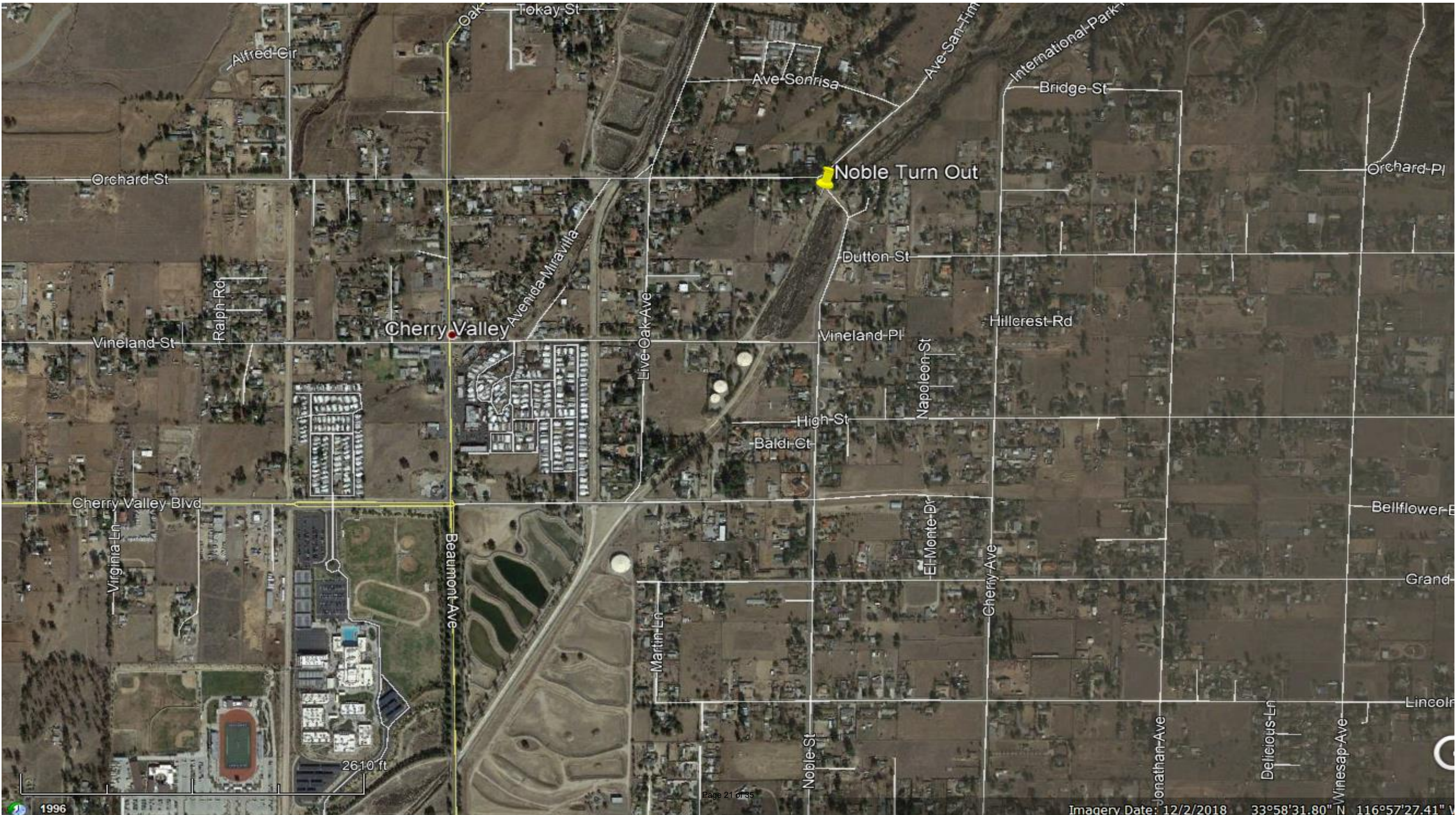
N 8th St

N San Geronimo Ave

Banning

Google Earth

2.39 mi



Noble Turn Out

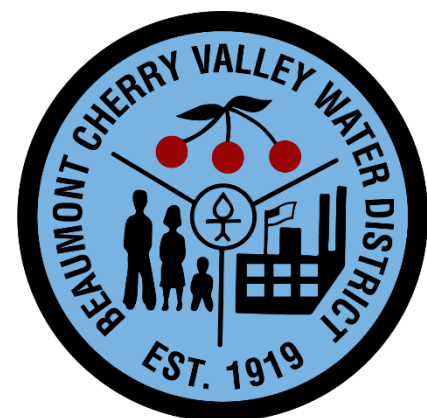
Cherry Valley

Avenida Miravilla



# Noble Turn-Out

- Supplies BCVWD Ponds
- BCVWD Armored Site



12/2020

Nancy Ave

Brookside Ave

Lincoln St

Crowther Ln

# Fiesta Recharge Facility

Cynthia St

Monika Ct

Lois Ln

Lucille Ct

Cherry Valley Acres Ln

Alexe St

Agnes St

Anna Ln

Cougar Way

Weng Star St

Google Earth

Winter Pine St

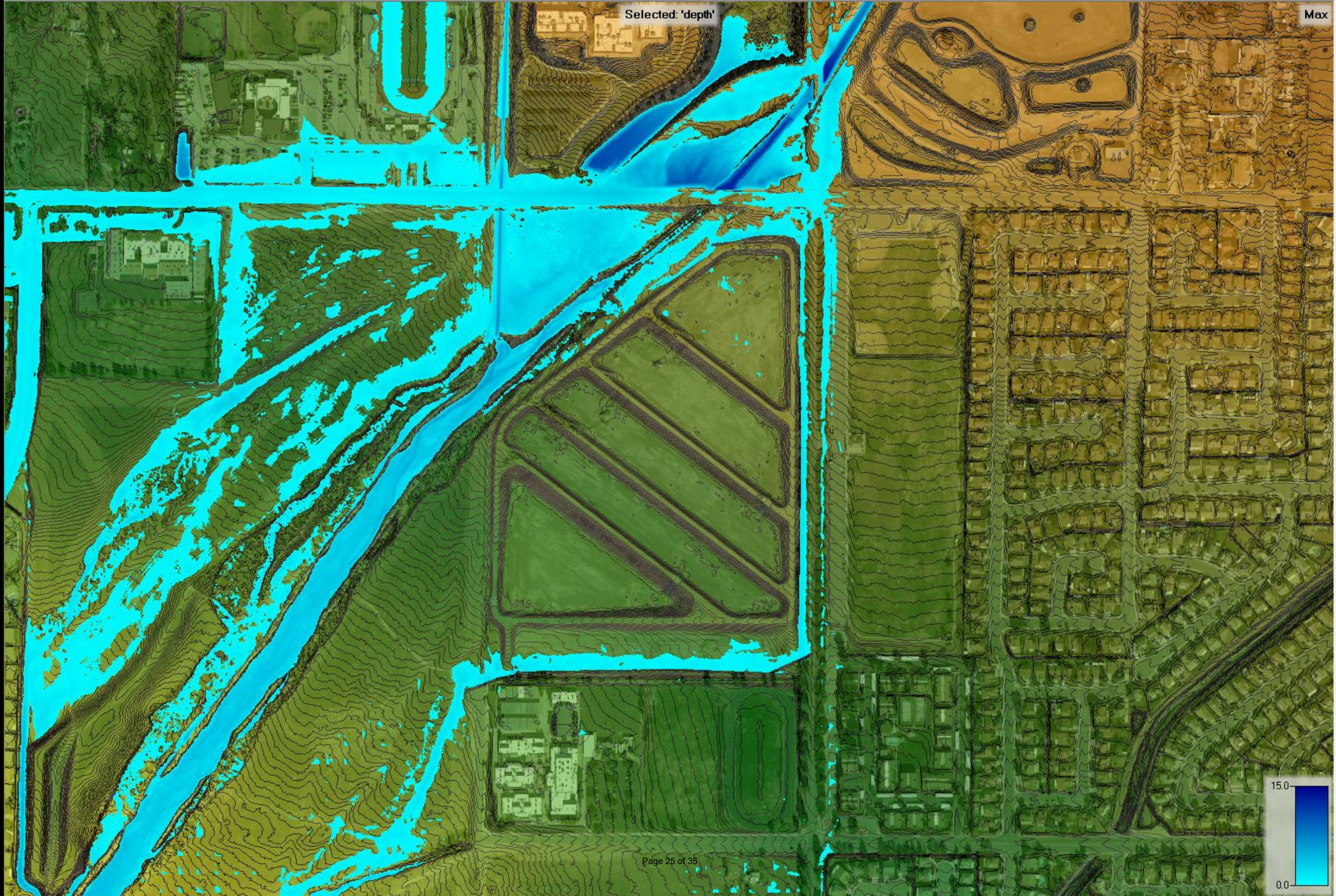


1531 ft

1996







Work together.

Protect our assets.

Hope for rain.  
*(~but not too much)*

Prepare and be  
ready to adjust as  
necessary.



# Cherry Valley Pump Station

December 2020 Incident



# Event

12-3-2020 - Series of SCE scheduled shut-downs

CVP has battery backup (12 hours)

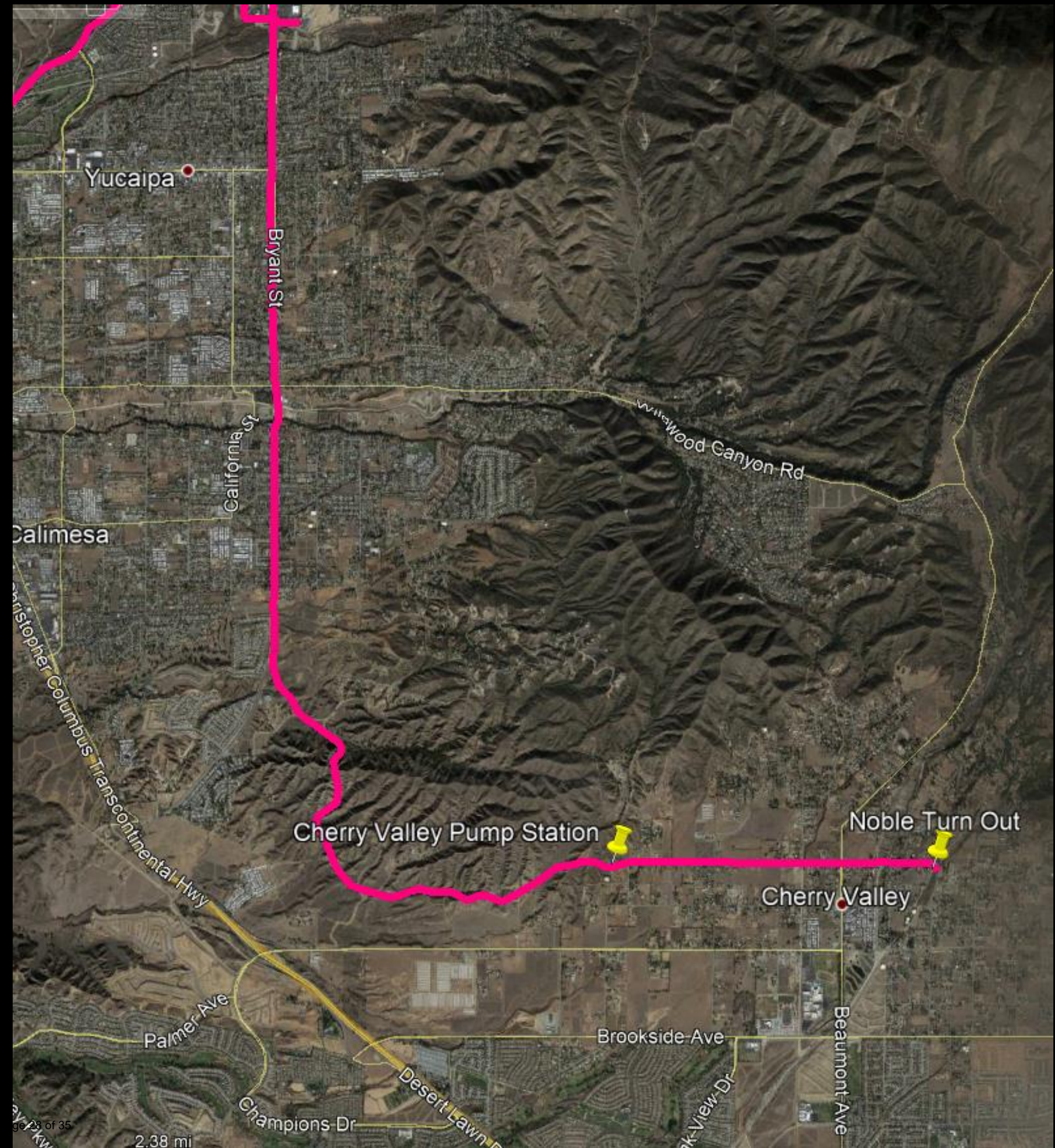
12-4-2020 - Re-energizing CVP resulted in some voltage anomalies

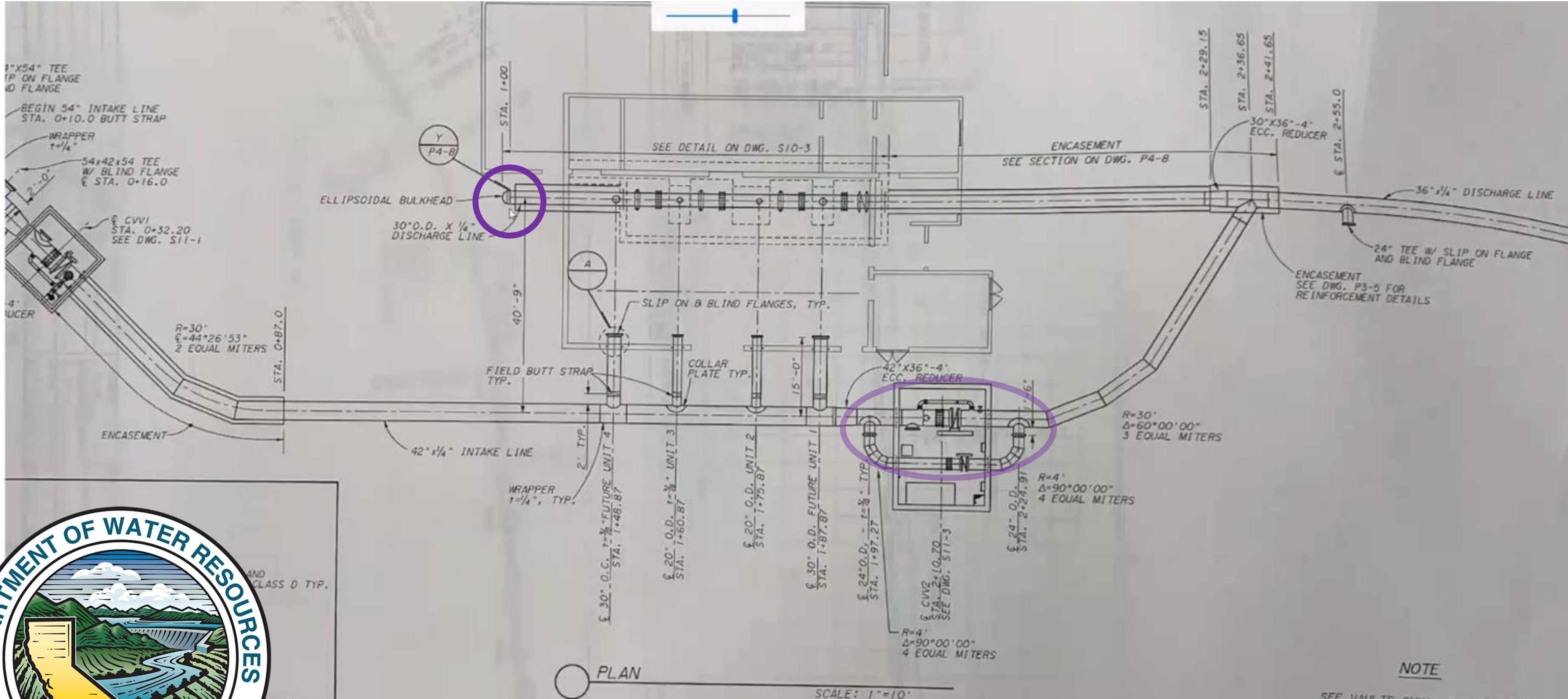
Timing of complex system of valving out of sync

Breach of bulkhead occurred

System was remotely turned off in minutes

Engineering investigation is ongoing





PLAN

SCALE: 1"=10'

**NOTE**

SEE VAULTS CVV1, AND CVV2 DWGS FOR MORE DETAILS.



Buried bulk head failure

Short duration release

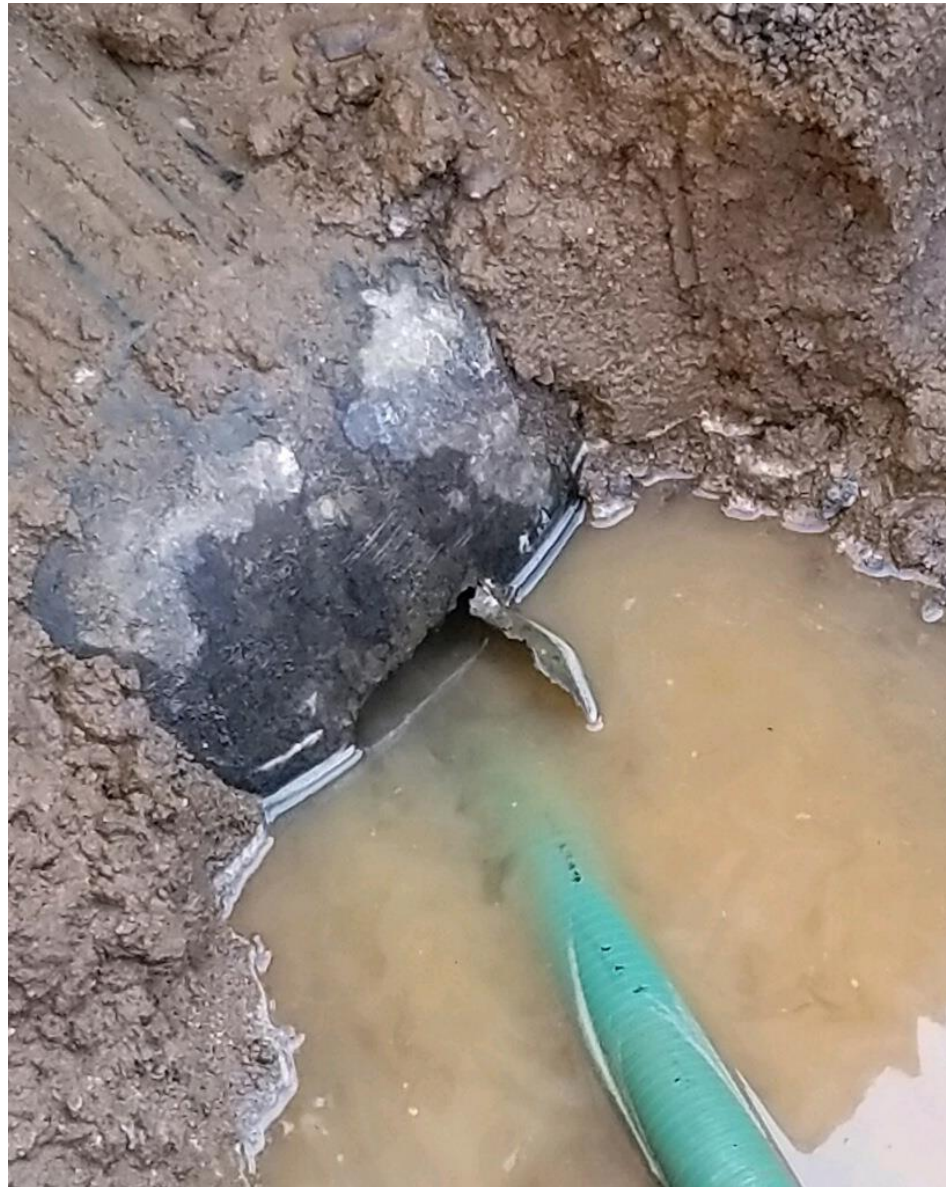


## Dewater and Investigate





## Point of Failure



Matter of Time

More Investigation Needed

Emergency Repairs Initiated



## Moving Forward

Procedural and power backup options examined

Systemic issues being investigated

Deliveries done for 2020

Deliveries tentatively scheduled 2/2021

Emergency contract via DWR initiated

